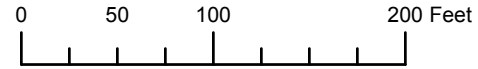


THIS MAP WAS PREPARED FOR ASSESSMENT PURPOSE ONLY

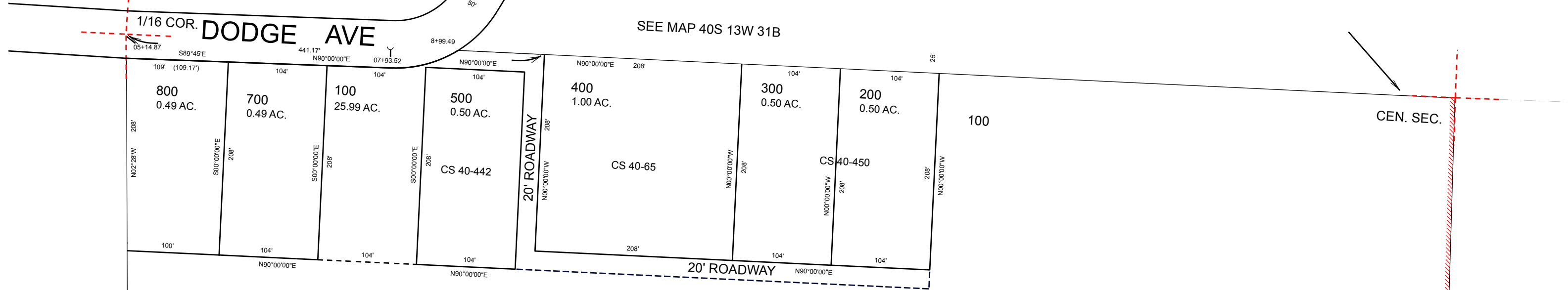


N.E. 1/4 S.W. 1/4 SEC. 31 T.40S. R.13W. W.M. CURRY COUNTY

1" = 100'

40S13W31CA BROOKINGS

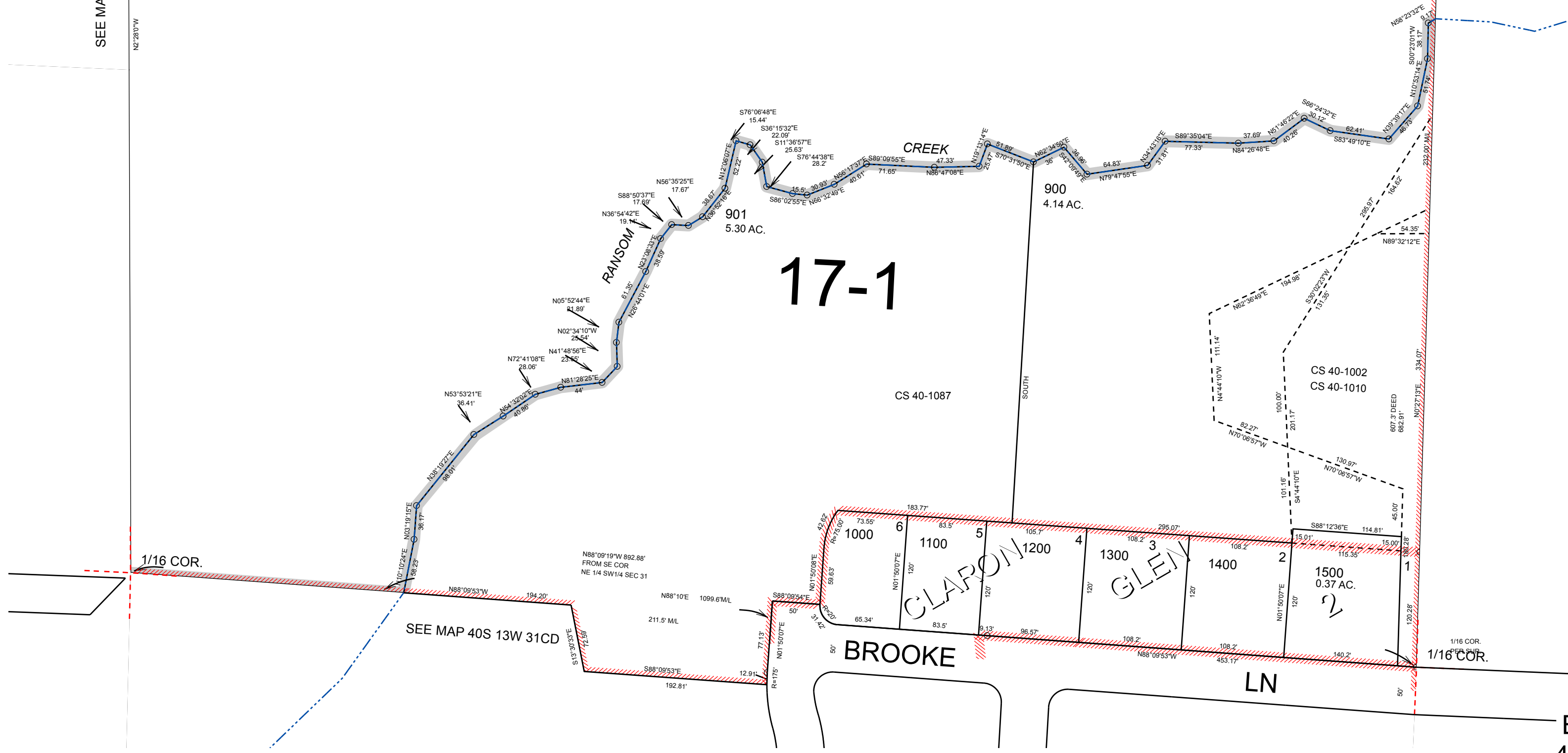
CANCELLED: 600



17-7

SEE MAP 40S 13W 31CB

SEE MAP 40S 13W 31D



17-1

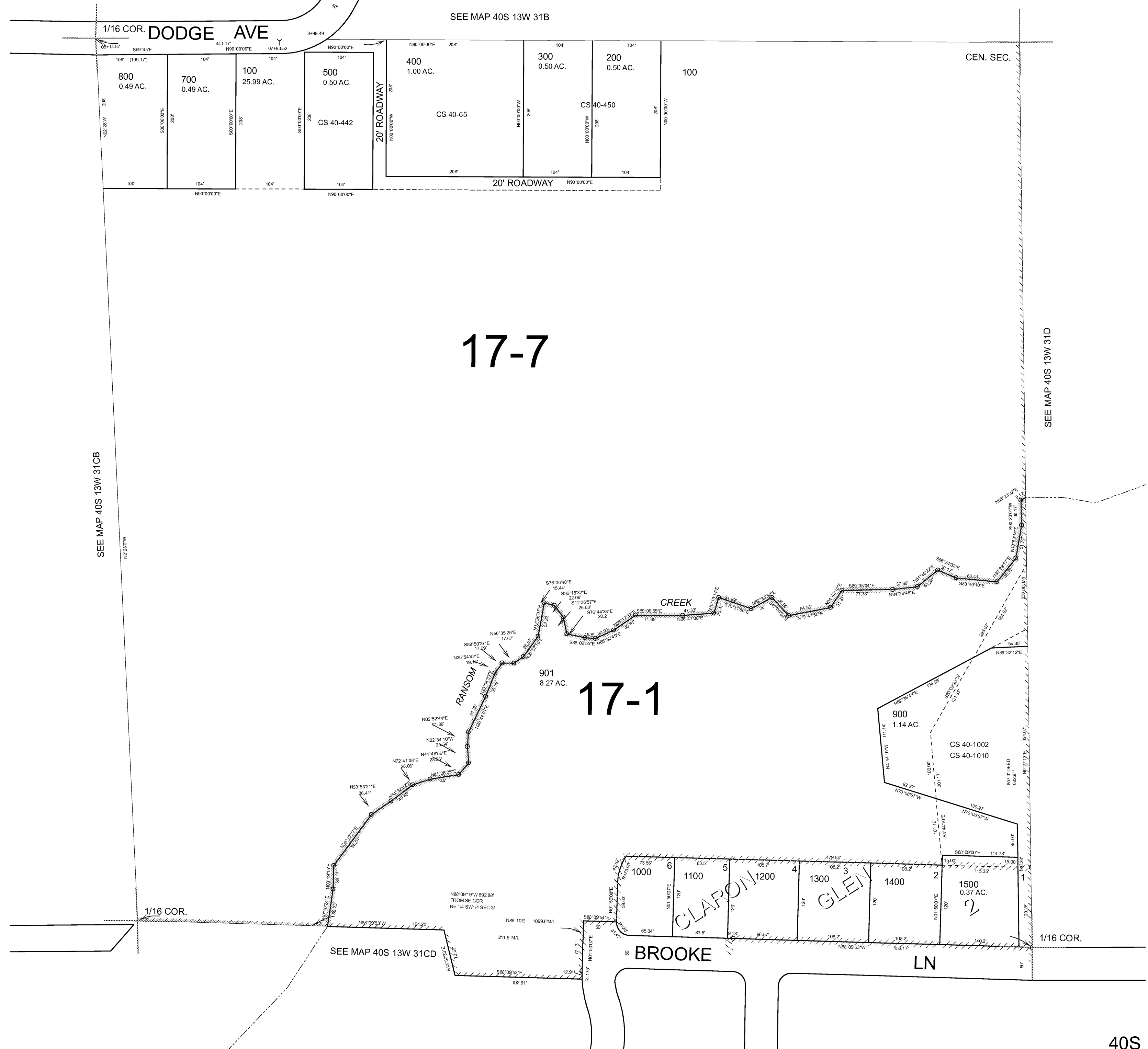
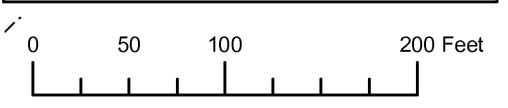
Revised: RAA 6/30/2010

BROOKINGS 40S13W31CA

THIS MAP WAS PREPARED FOR ASSESSMENT PURPOSE ONLY

NE1/4 SW1/4 SECTION 31 T.40S. R.13W. W.M.
CURRY COUNTY
1" = 100'

40S 13W 31CA
CANCELLED NO.
600



SEE MAP 40S 13W 31CB

SEE MAP 40S 13W 31B

SEE MAP 40S 13W 31D

SEE MAP 40S 13W 31CD

17-7

17-1

Revised RAA
6/5/2006

40S 13W 31CA

