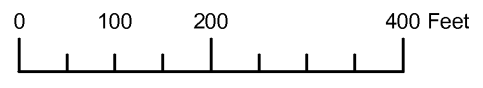


THIS MAP WAS PREPARED FOR ASSESSMENT PURPOSE ONLY

SE1/4 SECTION 24 T.40S. R.13W. W.M. CURRY COUNTY

40S 13W 24D



1" = 200'



- PARCEL 200
1. N65°22'40"W 58.02'
 2. S81°30'35"W 106.47'
 3. N83°27'55"W 44.58'
 4. S24°10'50"W 80.36'
 5. N82°33'44"W 67.76'
 6. S41°18'44"W 67.43'
 7. S51°52'23"W 91.10' (DEED) 91.04' (SUR)
 8. N82°33'07"W 32.99'
 9. S69°26'35"W 46.24'
 10. S44°29'00"W 63.22'
 11. N84°26'15"W 48.16'
 12. S86°32'54"W 68.49'
 13. S38°58'55"W 76.13'
 14. S86°57'05"W 23.17'
 15. N00°41'00"W 107.48'
 16. N31°25'00"E 40.69'

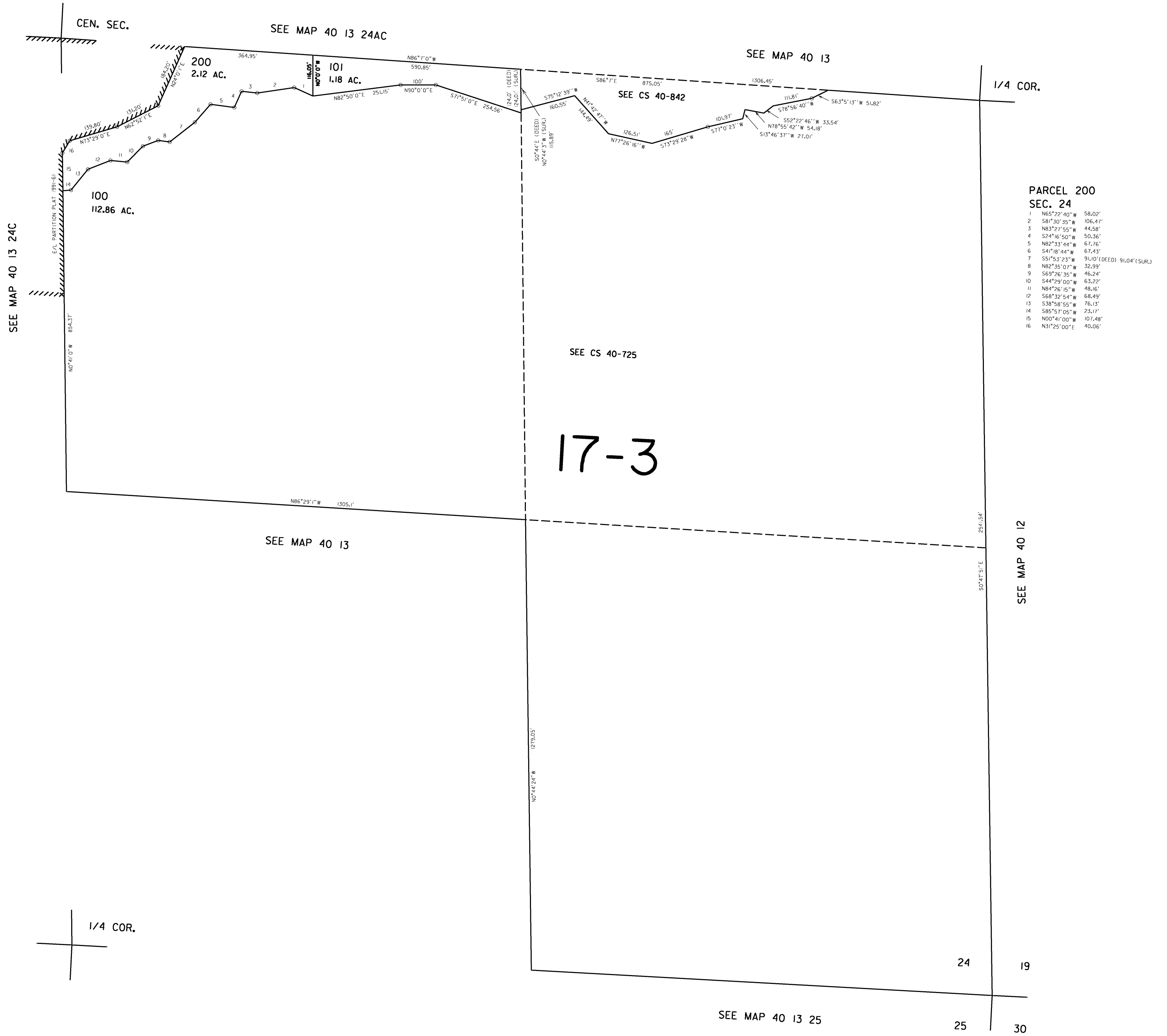
17-3

CS 40-725

THIS MAP WAS PREPARED FOR
ASSESSMENT PURPOSE ONLY

SE1/4 SEC. 24 T.40S. R.13W. W.M.
CURRY COUNTY
1" = 200'

40 13 24D



REVISED 4-15-98, JD

40 13 24D