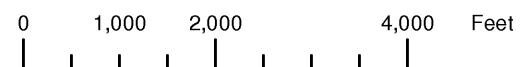


THIS MAP WAS PREPARED FOR ASSESSMENT PURPOSE ONLY



T.40S. R.12W. W.M.

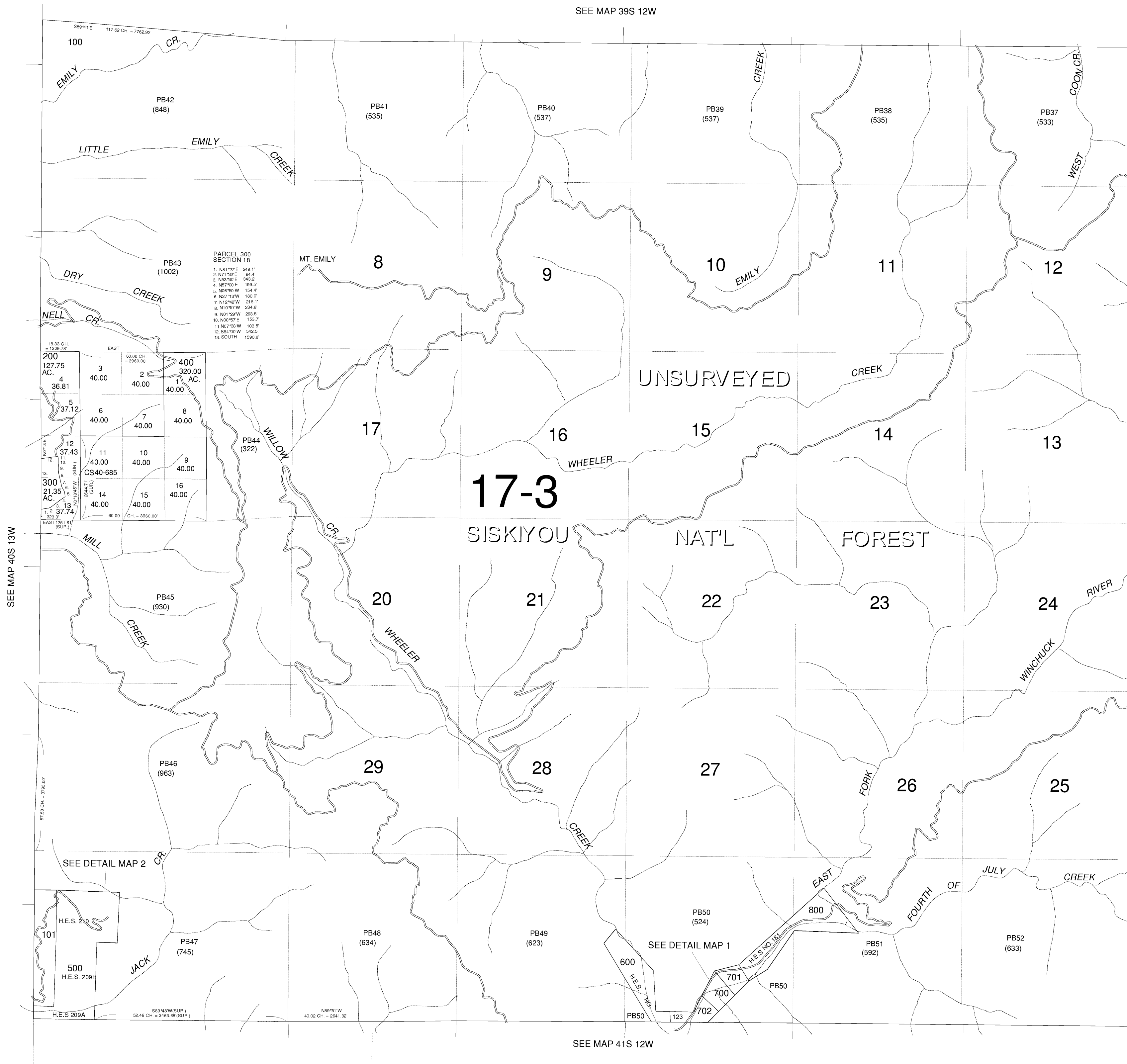
CURRY COUNTY

1" = 2000'

SEE MAP 39S 12W

40S 12W

CANCELLED NO. 100M1



PARCEL 300 SECTION 18

- N81°27'E 249.1'
- N71°22'E 64.4'
- N53°20'E 345.2'
- N57°00'E 189.5'
- N65°30'W 154.4'
- N27°13'W 180.0'
- N12°42'W 216.1'
- N10°07'W 234.8'
- N01°29'W 263.5'
- N00°57'E 153.7'
- N07°38'W 103.5'
- S84°10'W 549.5'
- SOUTH 1590.8'

18.33 CH = 1209.78'	EAST		60.00 CH = 3960.00'
200 127.75 AC.	3 40.00	2 40.00	400 320.00 AC.
4 36.81	5 37.12	6 40.00	7 40.00
8 37.43	9 40.00	10 40.00	11 40.00
12 37.43	13 37.74	14 40.00	15 40.00
16 40.00	17 40.00	18 40.00	19 40.00
20 40.00	21 40.00	22 40.00	23 40.00
24 40.00	25 40.00	26 40.00	27 40.00
28 40.00	29 40.00	30 40.00	31 40.00
32 40.00	33 40.00	34 40.00	35 40.00
36 40.00	37 40.00	38 40.00	39 40.00
40 40.00	41 40.00	42 40.00	43 40.00
44 40.00	45 40.00	46 40.00	47 40.00
48 40.00	49 40.00	50 40.00	51 40.00
52 40.00	53 40.00	54 40.00	55 40.00
56 40.00	57 40.00	58 40.00	59 40.00
60 40.00	61 40.00	62 40.00	63 40.00
64 40.00	65 40.00	66 40.00	67 40.00
68 40.00	69 40.00	70 40.00	71 40.00
72 40.00	73 40.00	74 40.00	75 40.00
76 40.00	77 40.00	78 40.00	79 40.00
80 40.00	81 40.00	82 40.00	83 40.00
84 40.00	85 40.00	86 40.00	87 40.00
88 40.00	89 40.00	90 40.00	91 40.00
92 40.00	93 40.00	94 40.00	95 40.00
96 40.00	97 40.00	98 40.00	99 40.00
100 40.00	101 40.00	102 40.00	103 40.00
104 40.00	105 40.00	106 40.00	107 40.00
108 40.00	109 40.00	110 40.00	111 40.00
112 40.00	113 40.00	114 40.00	115 40.00
116 40.00	117 40.00	118 40.00	119 40.00
120 40.00	121 40.00	122 40.00	123 40.00

SEE MAP 40S 13W

SEE MAP 40S 11W

SEE MAP 41S 12W

Revised RAA
3/26/2004
40S 12W

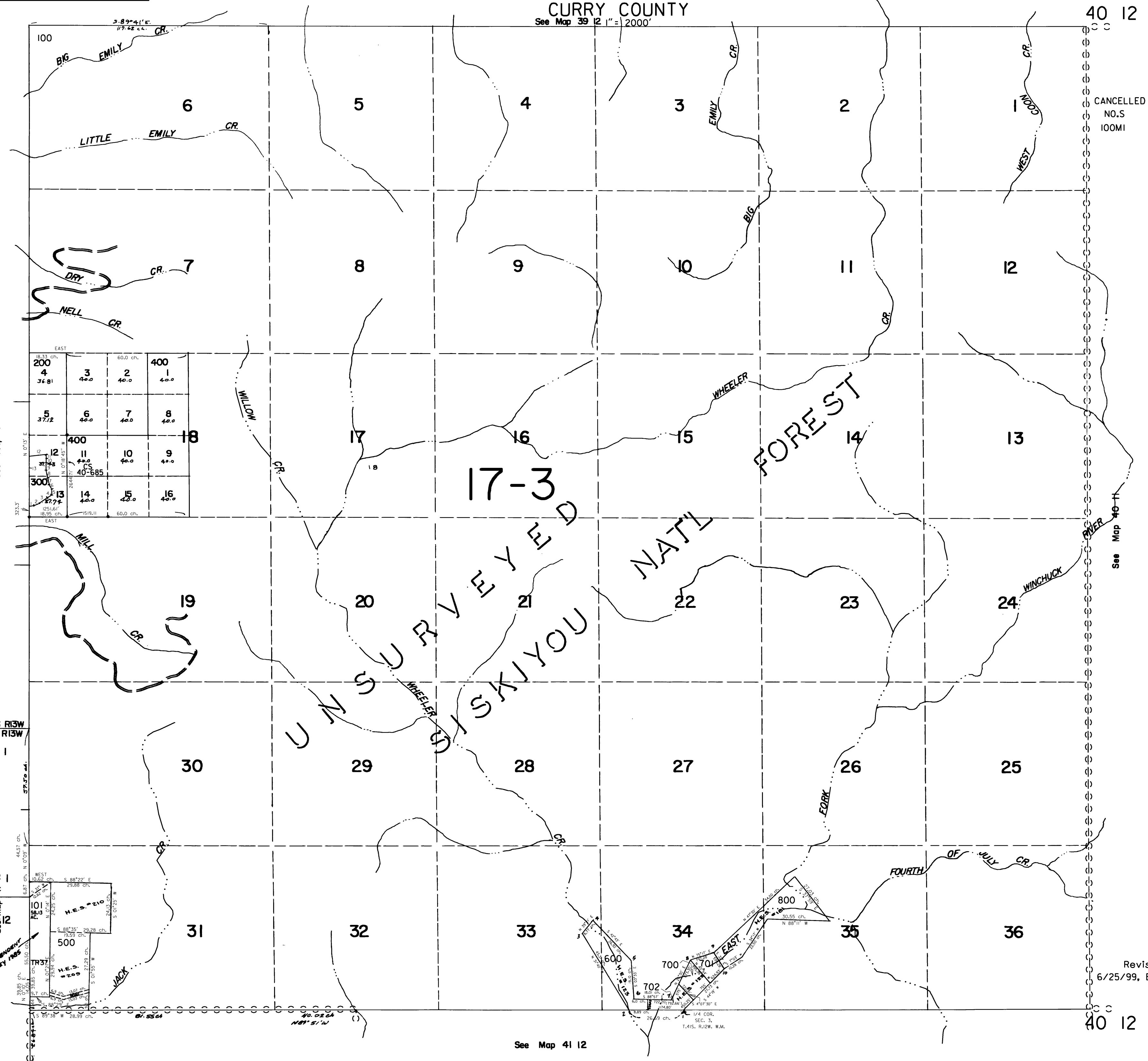
THIS MAP WAS PREPARED FOR ASSESSMENT PURPOSE ONLY

T.40S. R.12W. W.M.
CURRY COUNTY
See Map 39 12 1" = 2000'

40 12

CANCELLED NO.S 100M1

- 1. N81°27'E 249.1'
- 2. N71°32'E 64.4'
- 3. N53°30'E 343.2'
- 4. N57°00'E 199.5'
- 5. N06°50'W 154.4'
- 6. N27°15'W 180.0'
- 7. N12°42'W 218.1'
- 8. N10°57'W 234.18'
- 9. N01°29'W 263.5'
- 10. N00°51'E 153.7'
- 11. N07°38'W 103.5'
- 12. S84°00'W 542.5'
- 13. SOUTH 1590.8'



EAST			
18.35 ch.	60.0 ch.	400	400
4	3	2	1
36.81	40.0	40.0	40.0
EAST			
37.12	40.0	40.0	40.0
5	6	7	8
400	400	400	400
12	11	10	9
37.12	40.0	40.0	40.0
EAST			
300	400	400	400
13	14	15	16
40.0	40.0	40.0	40.0

T40S R13W
T41S R13W

See Map 41 13
See Map 41 12

SEE DEPARTMENT OF REVENUE 1985

Revised 6/25/99, BPH

See Map 41 12

40 12