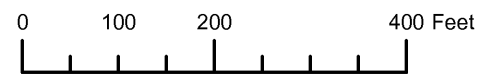


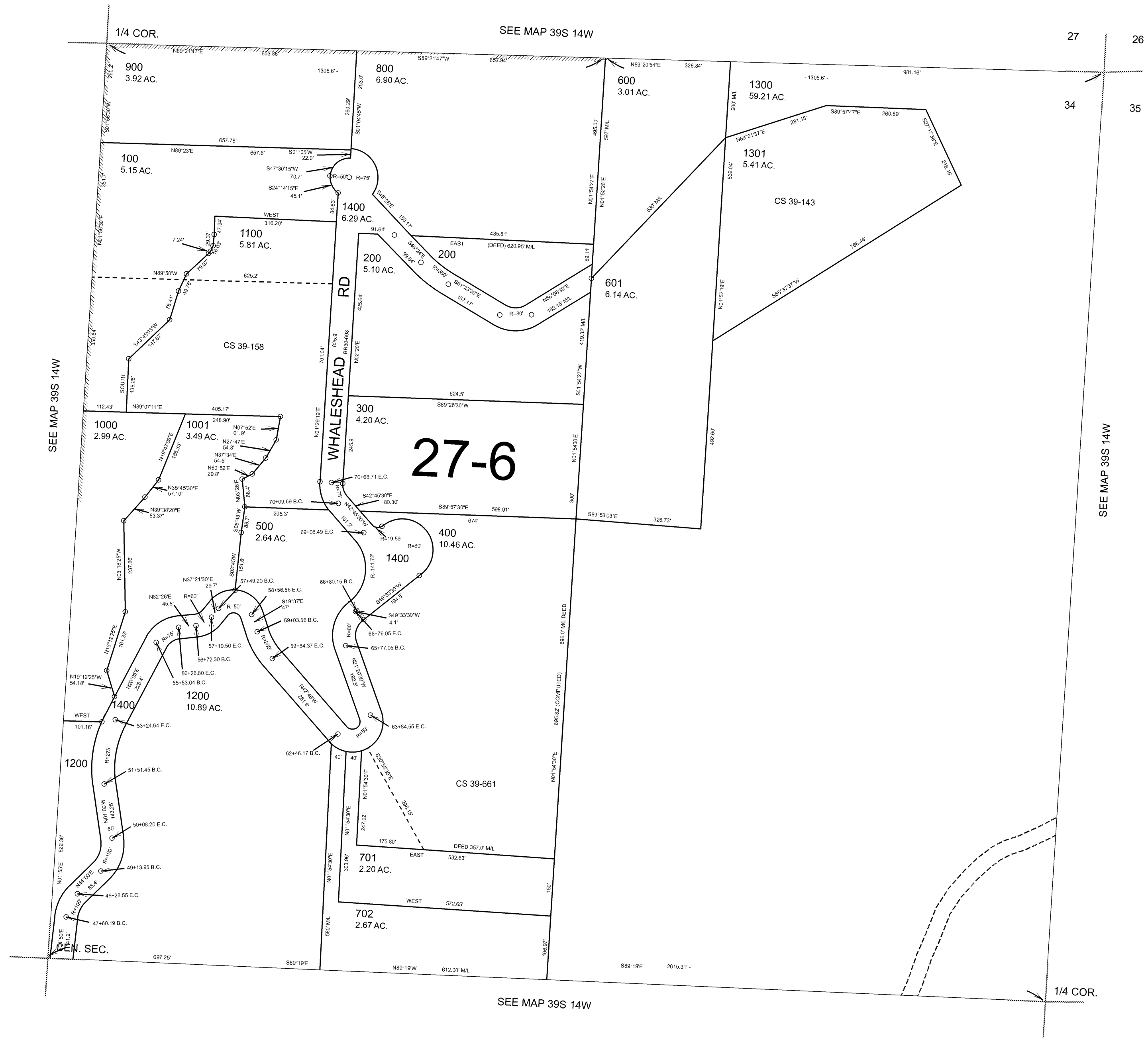
THIS MAP WAS PREPARED FOR ASSESSMENT PURPOSE ONLY



N.E. 1/4 SEC. 34 T. 39S. R. 14W. W.M. CURRY COUNTY 1" = 200'

39S14W34A

CANCELLED: 700



SEE MAP 39S 14W

SEE MAP 39S 14W

27 26

34 35

SEE MAP 39S 14W

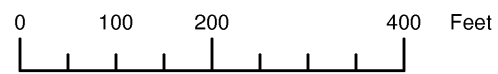
SEE MAP 39S 14W

1/4 COR.

Revised RAA 6/19/2008

39S14W34A

THIS MAP WAS PREPARED FOR ASSESSMENT PURPOSE ONLY



NE1/4 SECTION 34 T.39S. R.14W. W.M.
CURRY COUNTY
1" = 200'

39S 14W 34A

CANCELLED NO.
700

