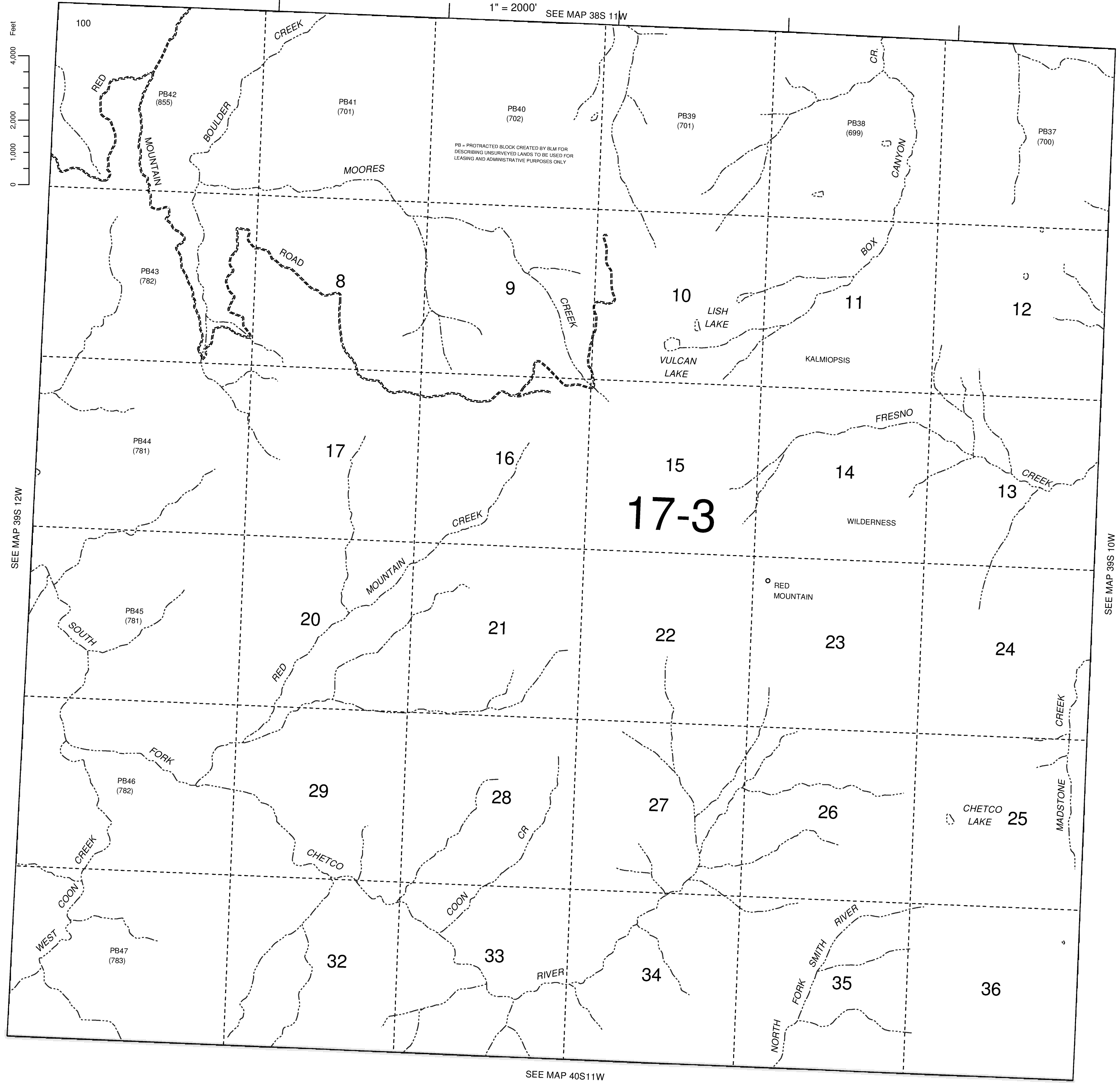


THIS MAP WAS PREPARED FOR ASSESSMENT PURPOSE ONLY

T.39S. R.11W. W.M.
CURRY COUNTY

39S 11W



PB = PROTRACTED BLOCK CREATED BY BLM FOR DESCRIBING UNSURVEYED LANDS TO BE USED FOR LEASING AND ADMINISTRATIVE PURPOSES ONLY

1" = 2000' SEE MAP 38S 11W

Feet
4,000
2,000
0

SEE MAP 39S 12W

SEE MAP 39S 10W

SEE MAP 40S 11W

Revised By
RAA
Oct 20, 2003
39S 11W