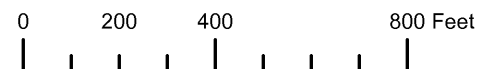


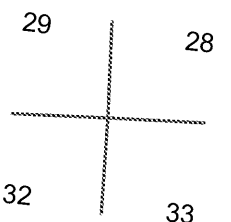
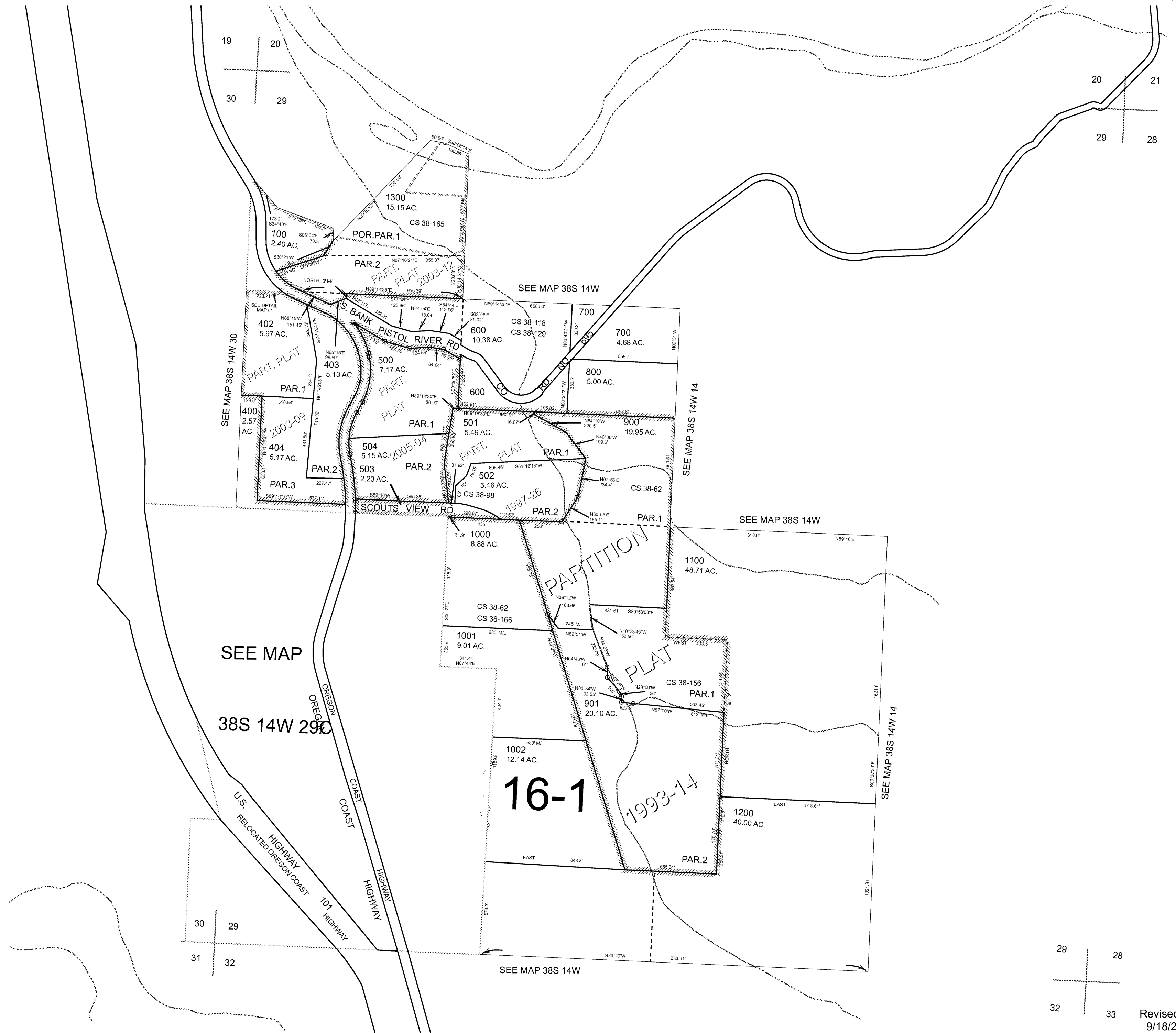
THIS MAP WAS PREPARED FOR ASSESSMENT PURPOSE ONLY



SECTION 29 T.38S. R.14W. W.M. CURRY COUNTY  
1" = 400'

38S14W29

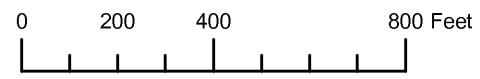
CANCELLED:  
401



Revised RAA  
9/18/2008

38S14W29

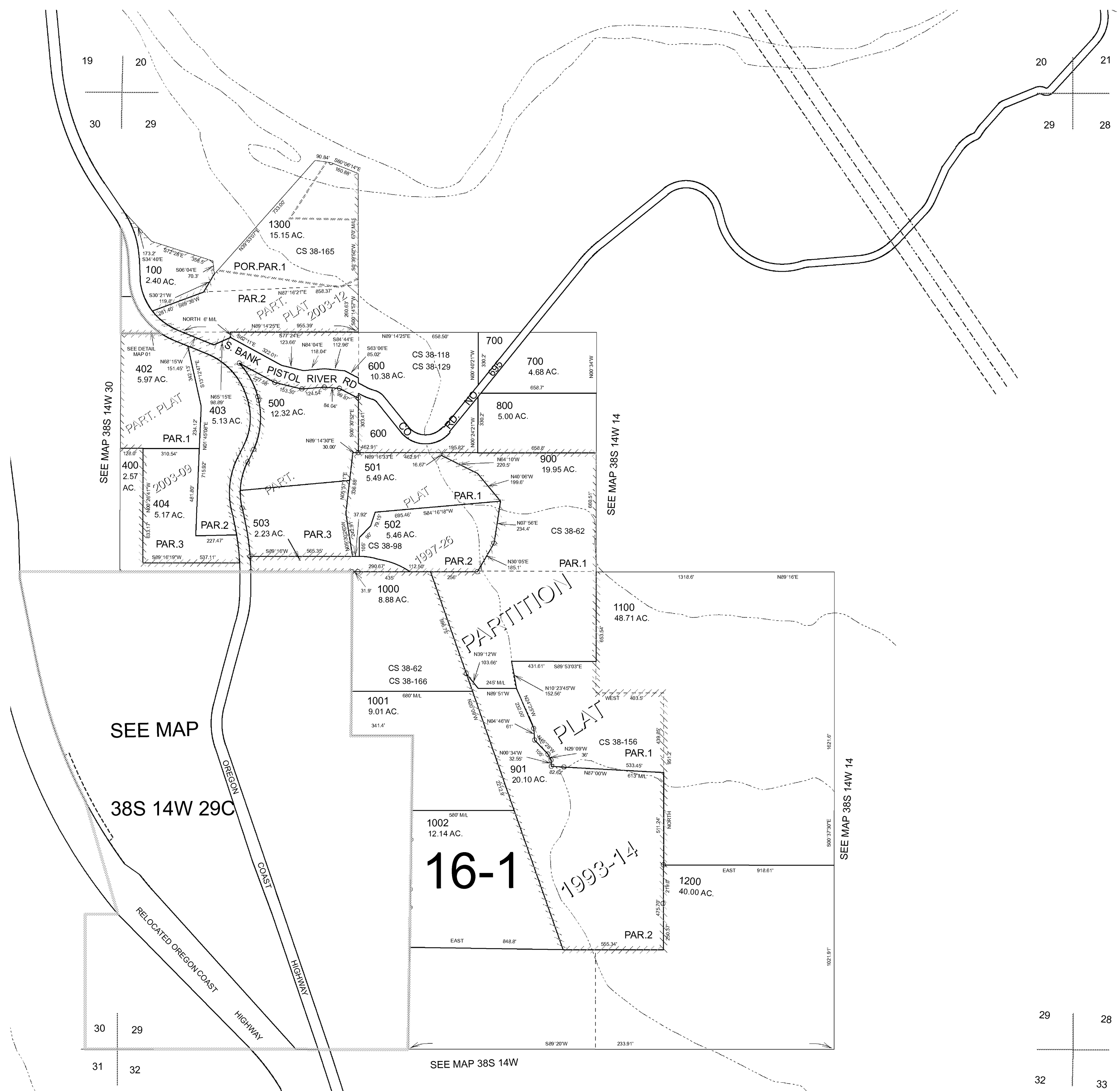
THIS MAP WAS PREPARED FOR  
ASSESSMENT PURPOSE ONLY



SECTION 29 T.38S. R.14W. W.M.  
CURRY COUNTY  
1" = 400'

38S 14W 29  
& INDEX

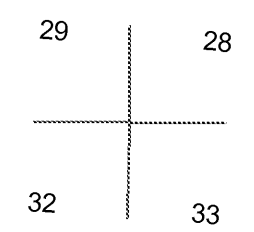
CANCELLED NO.  
401



SEE MAP  
38S 14W 29C

16-1

SEE MAP 38S 14W



Revised RAA  
5/23/2006

38S 14W 29  
& INDEX

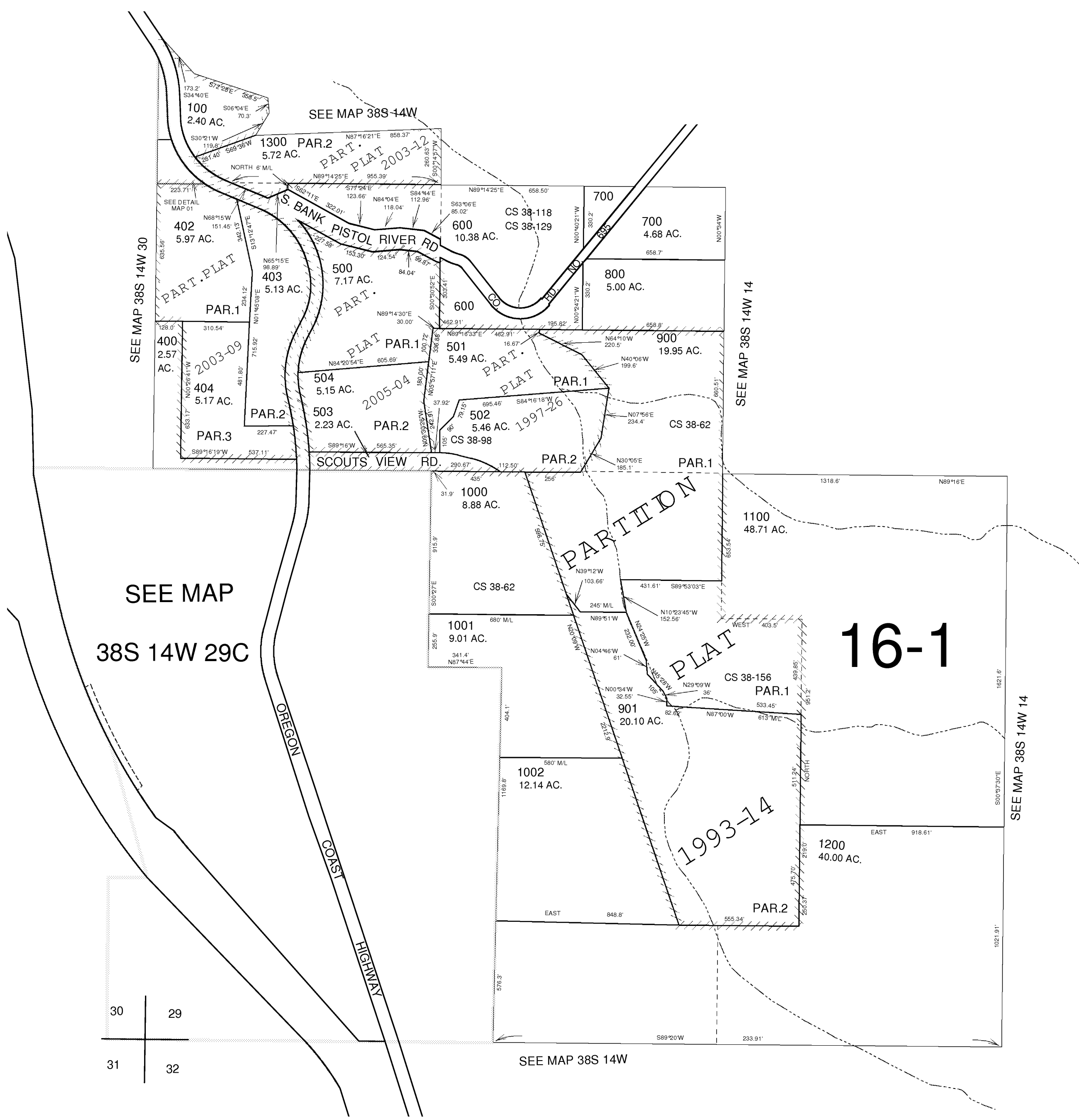
THIS MAP WAS PREPARED FOR ASSESSMENT PURPOSE ONLY

SECTION 29 T.38S. R.14W. W.M. CURRY COUNTY  
1" = 400'

38S 14W 29 & INDEX  
CANCELLED NO. 401

19 | 20  
---  
30 | 29

20 | 21  
---  
29 | 28



30 | 29  
---  
31 | 32

29 | 28  
---  
32 | 33