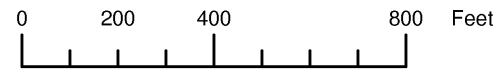


THIS MAP WAS PREPARED FOR
ASSESSMENT PURPOSE ONLY

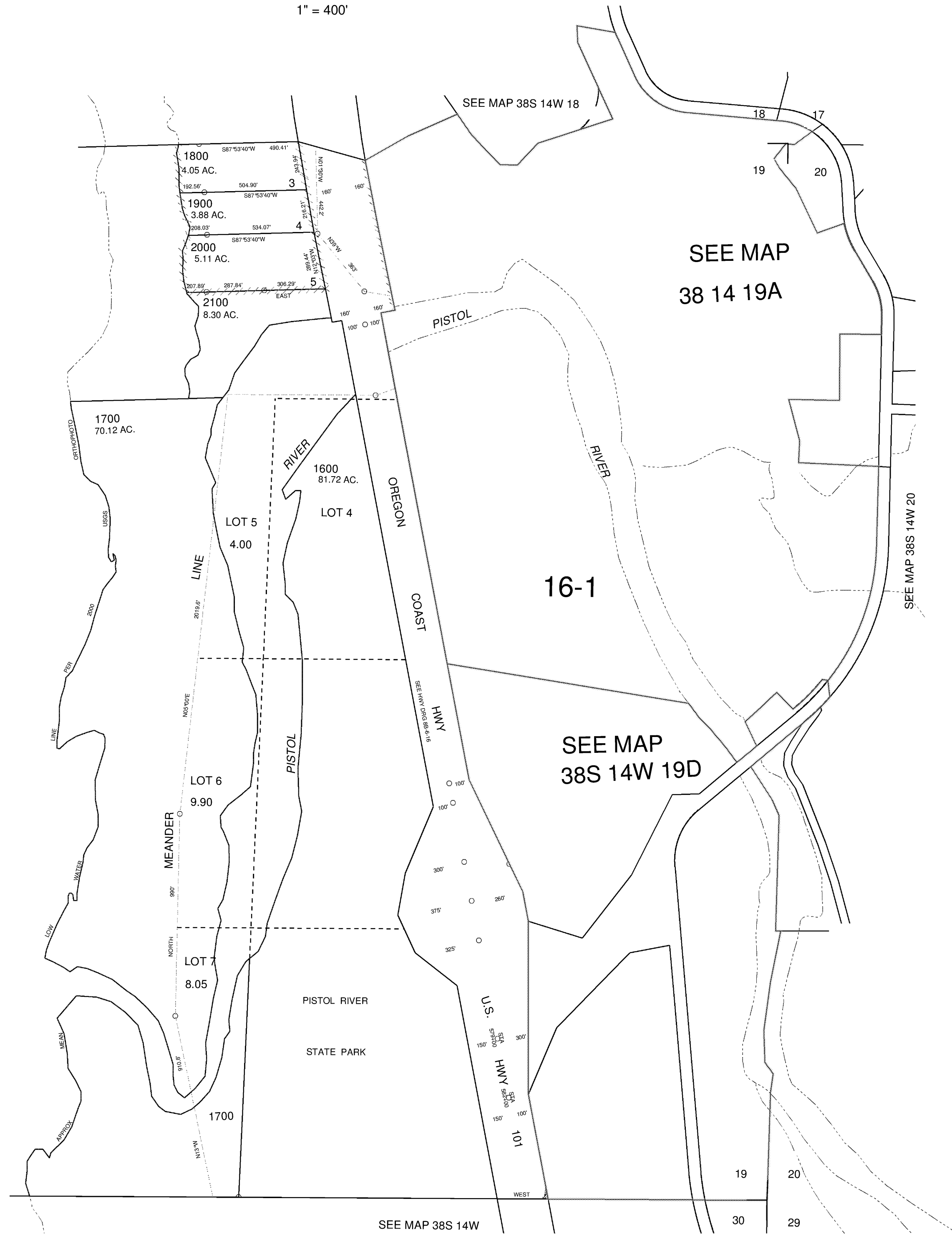


SECTION 19 T.38S. R.14W. W.M. CURRY COUNTY

1" = 400'

38S 14W 19
& INDEX

CANCELLED NO.
100 THRU 1500
700



Revised RAA
10/12/2004

38S 14W 19
& INDEX