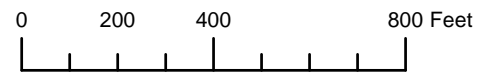


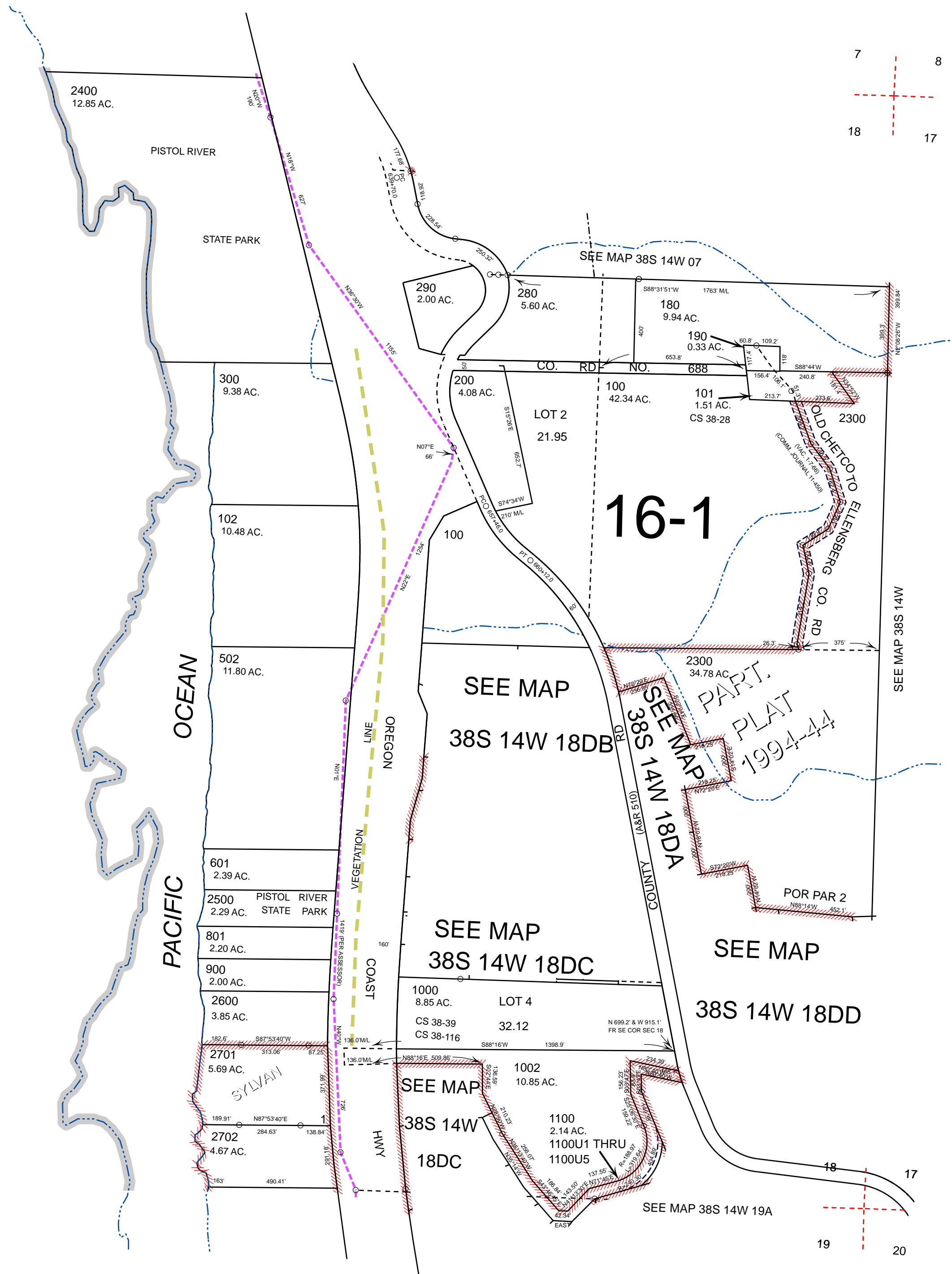
THIS MAP WAS PREPARED FOR ASSESSMENT PURPOSE ONLY



SECTION 18 T.38S. R.14W. W.M.
CURRY COUNTY
1" = 400'

38S14W18

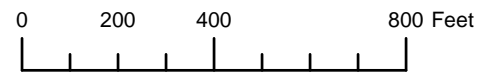
- CANCELLED:
- 301
 - 400
 - 400A1
 - 500
 - 501
 - 503
 - 505 THRU 507
 - 600
 - 700
 - 701
 - 702
 - 800
 - 901 THRU 907
 - 1001
 - 1101 THRU 1110
 - 1200 THRU 2100
 - 2200
 - 2301 THRU 2303
 - 2700
 - 2703 THRU 2705



Revised: RAA
5/6/2011

38S14W18

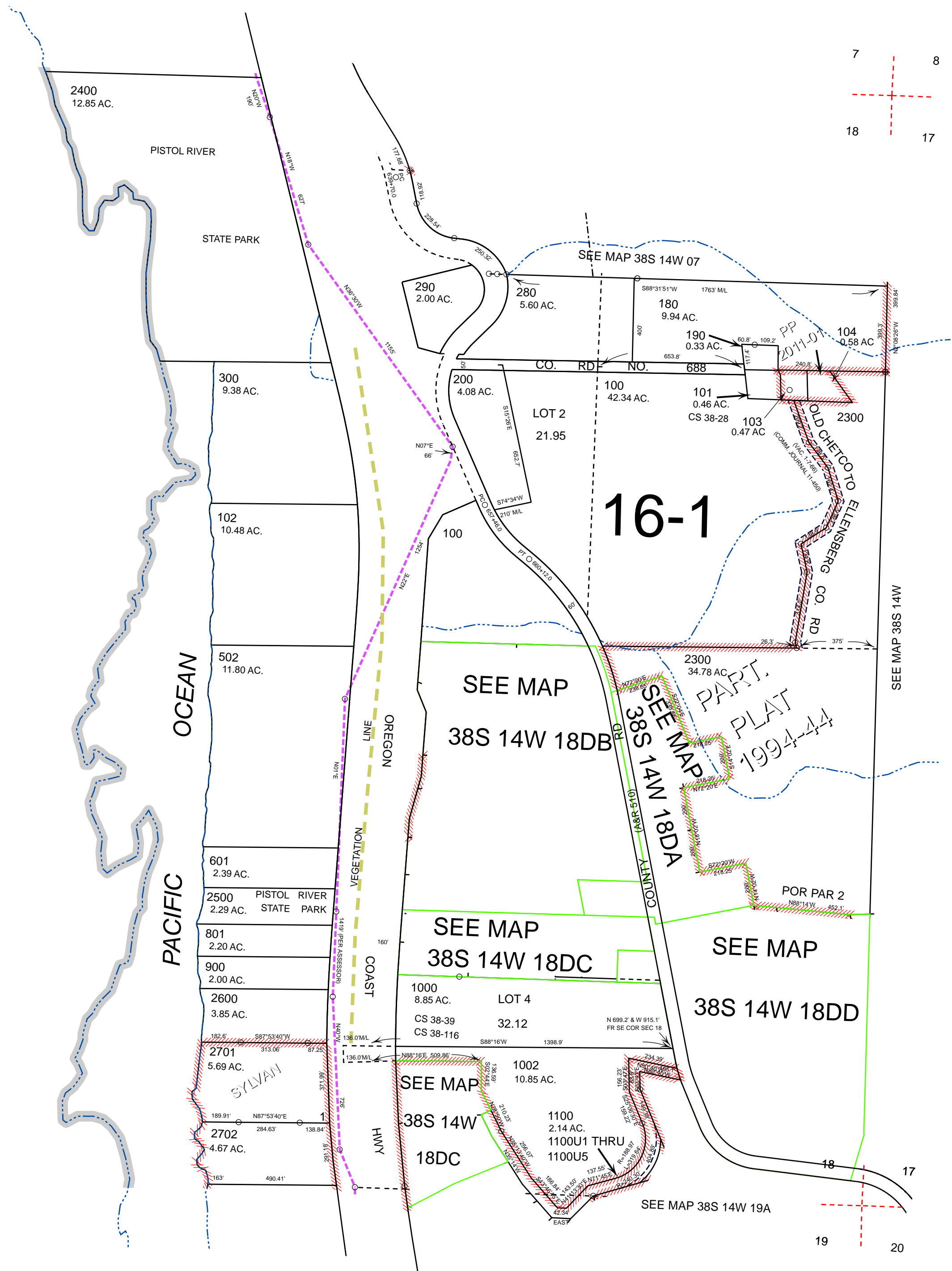
THIS MAP WAS PREPARED FOR ASSESSMENT PURPOSE ONLY



SECTION 18 T.38S. R.14W. W.M.
CURRY COUNTY
1" = 400'

38S14W18

- CANCELLED:
- 301
 - 400
 - 400A1
 - 500
 - 501
 - 503
 - 505 THRU 507
 - 600
 - 700
 - 701
 - 702
 - 800
 - 901 THRU 907
 - 1001
 - 1101 THRU 1110
 - 1200 THRU 2100
 - 2200
 - 2301 THRU 2303
 - 2700
 - 2703 THRU 2705



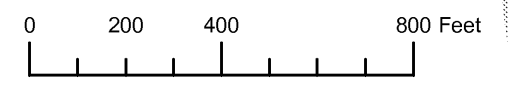
Revised: RAA
5/2/2011

38S14W18

SECTION 18 T.38S. R.14W. W.M.
CURRY COUNTY

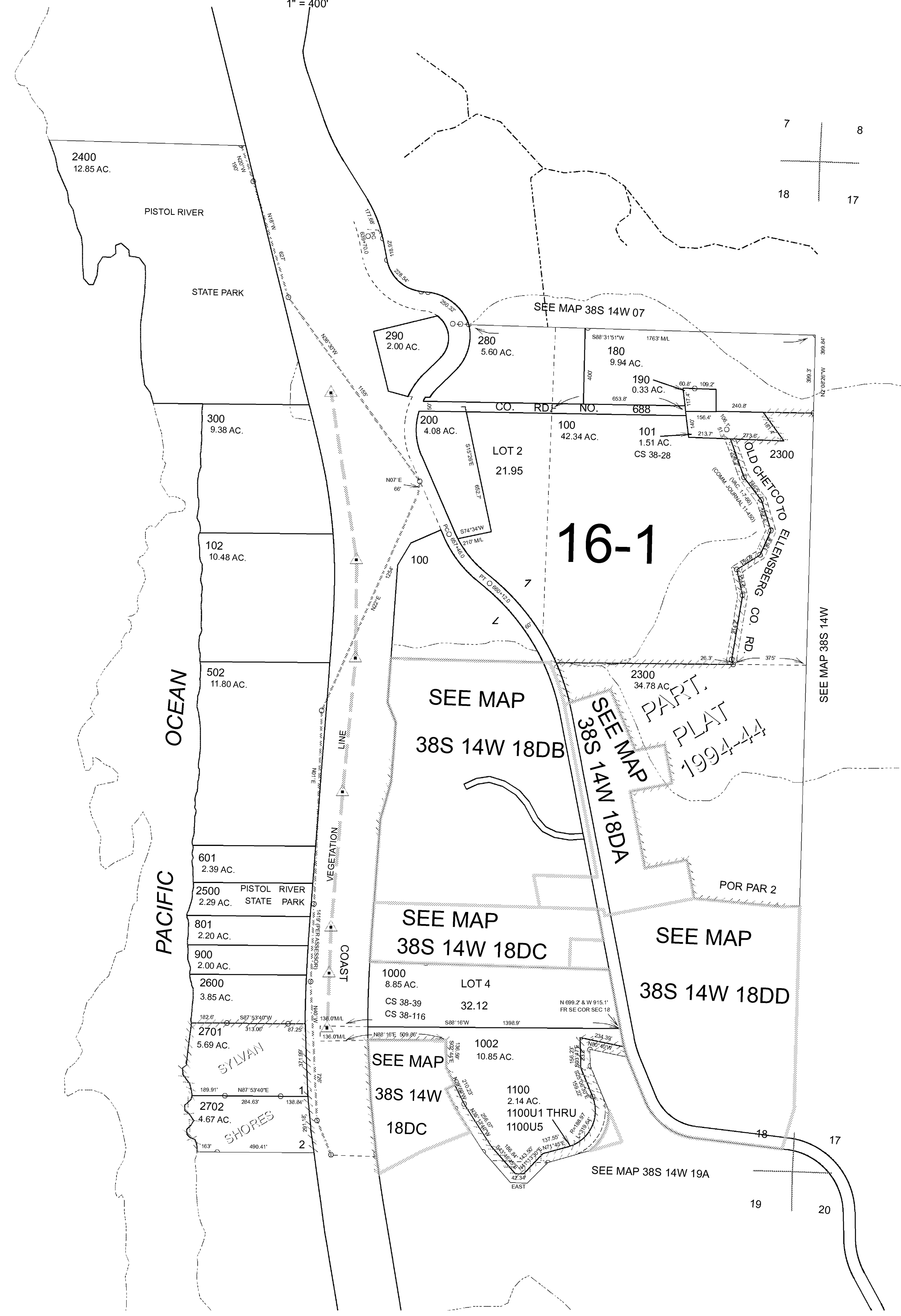
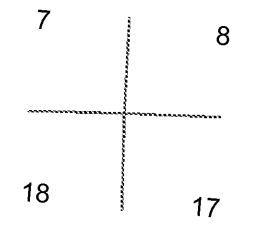
38S 14W 18
& INDEX

THIS MAP WAS PREPARED FOR
ASSESSMENT PURPOSE ONLY



1" = 400'

- CANCELLED NO.
- 301
 - 400
 - 400A1
 - 500
 - 501
 - 503
 - 505 THRU 507
 - 600
 - 700
 - 701
 - 702
 - 800
 - 901 THRU 907
 - 1001
 - 1101 THRU 1110
 - 1200 THRU 2100
 - 2200
 - 2301 THRU 2303
 - 2700
 - 2703 THRU 2705



16-1

SEE MAP
38S 14W 18DB

SEE MAP
38S 14W 18DA

SEE MAP
38S 14W 18DC

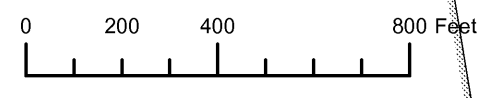
SEE MAP
38S 14W 18DD

SEE MAP
38S 14W
18DC

SEE MAP 38S 14W 19A

Revised RAA
10/9/2006
38S 14W 18
& INDEX

THIS MAP WAS PREPARED FOR ASSESSMENT PURPOSE ONLY

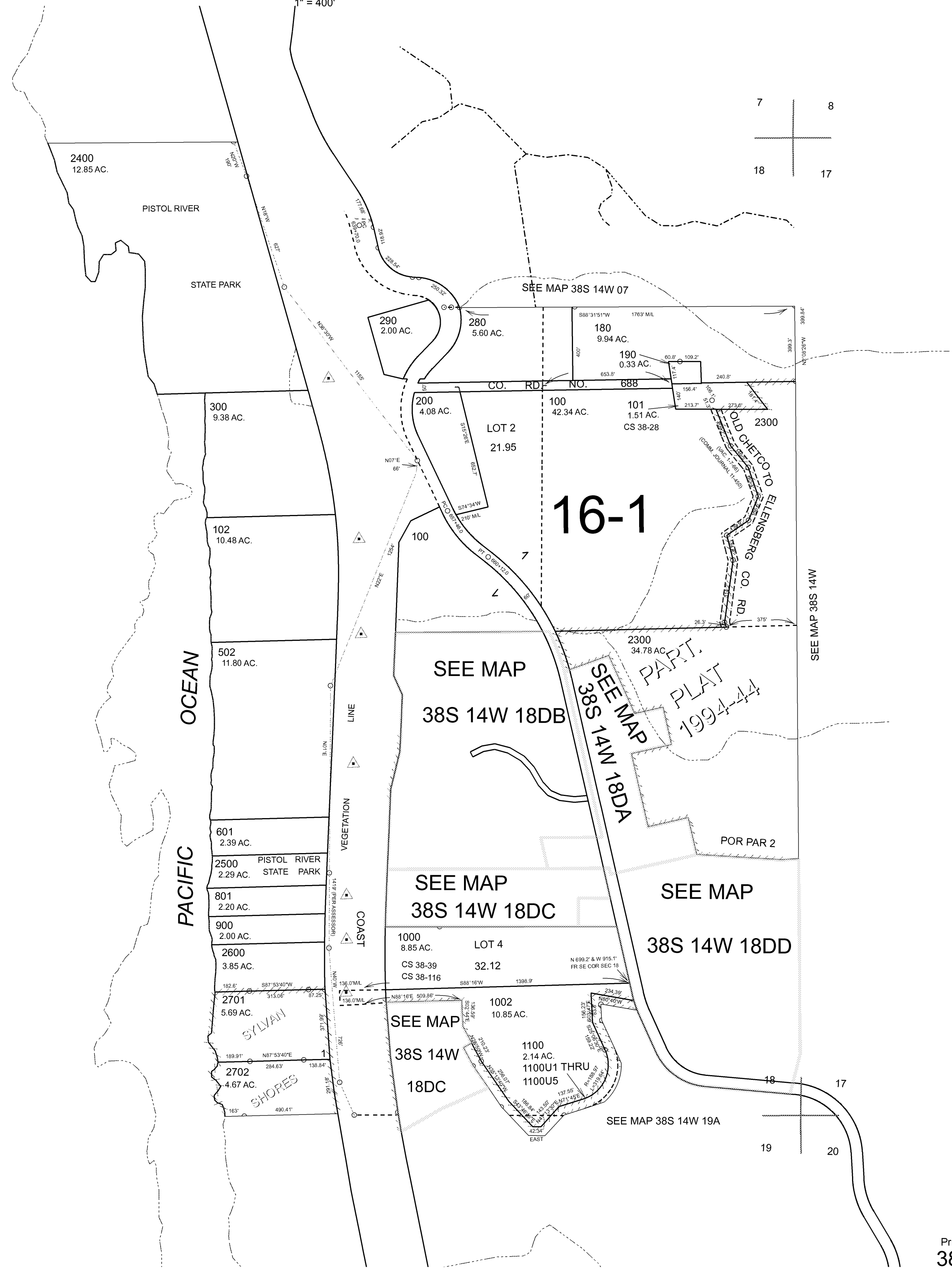
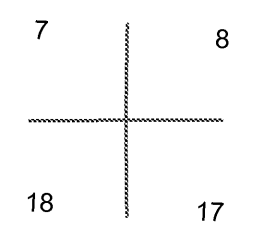


SECTION 18 T.38S. R.14W. W.M.
CURRY COUNTY

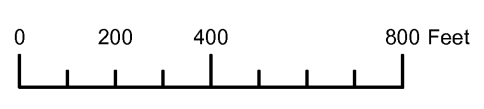
1" = 400'

38S 14W 18

- CANCELLED NO.
- 301
- 400
- 400A1
- 500
- 501
- 503
- 505 THRU 507
- 600
- 700
- 701
- 702
- 800
- 901 THRU 907
- 1001
- 1101 THRU 1110
- 1200 THRU 2100
- 2200
- 2301 THRU 2303
- 2700
- 2703 THRU 2705



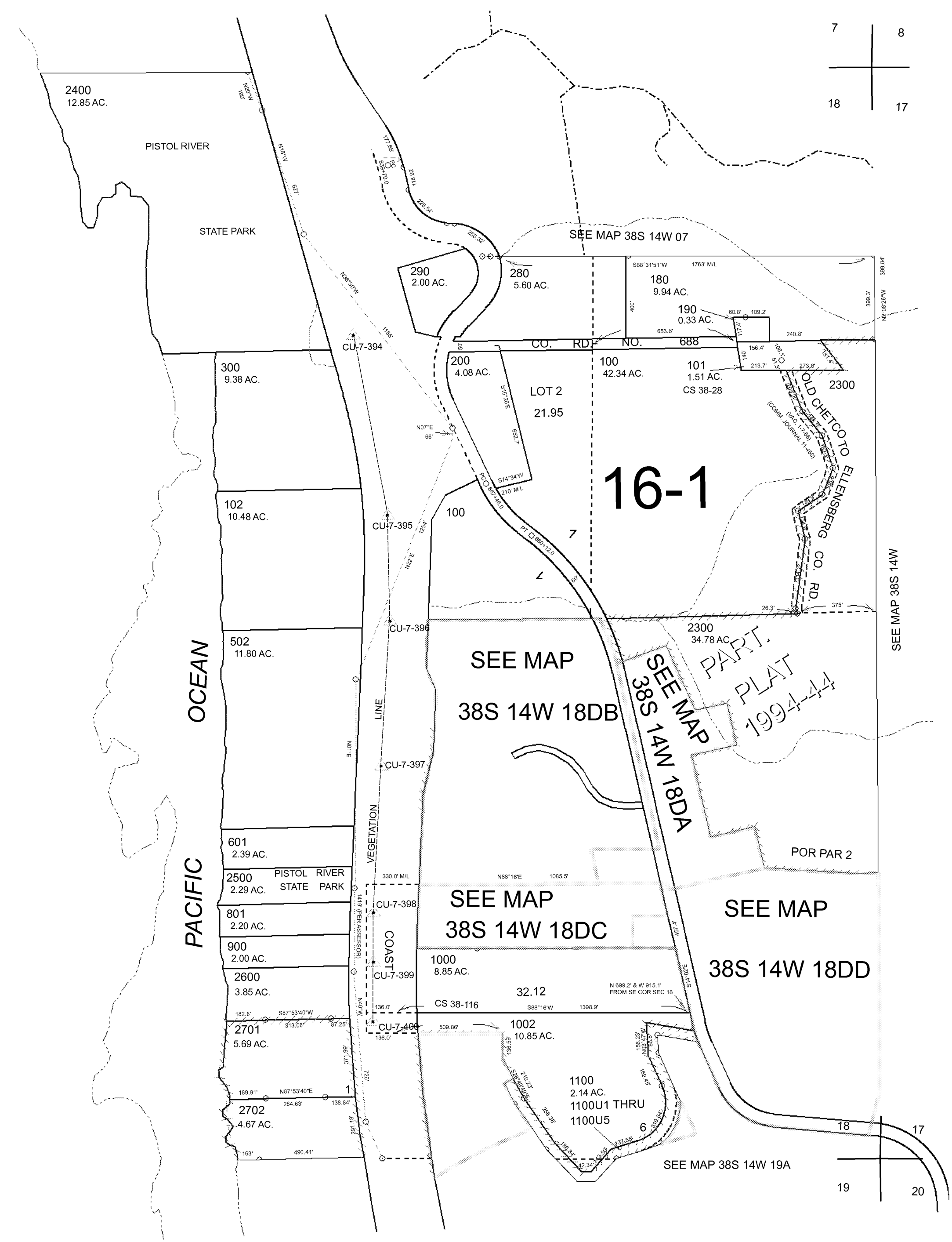
THIS MAP WAS PREPARED FOR ASSESSMENT PURPOSE ONLY



SECTION 18 T.38S. R.14W. W.M.
CURRY COUNTY
1" = 400'

38S 14W 18
& INDEX

- CANCELLED NO.
- 301
- 400
- 400A1
- 501
- 503
- 505 THRU 507
- 600
- 700
- 701
- 702
- 800
- 901 THRU 907
- 1001
- 1101 THRU 1110
- 1200 THRU 2100
- 2200
- 2301 THRU 2303
- 2700
- 2703 THRU 2705



Revised RAA
7/26/2005

38S 14W 18
& INDEX