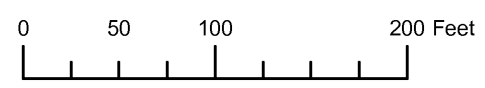


THIS MAP WAS PREPARED FOR ASSESSMENT PURPOSE ONLY

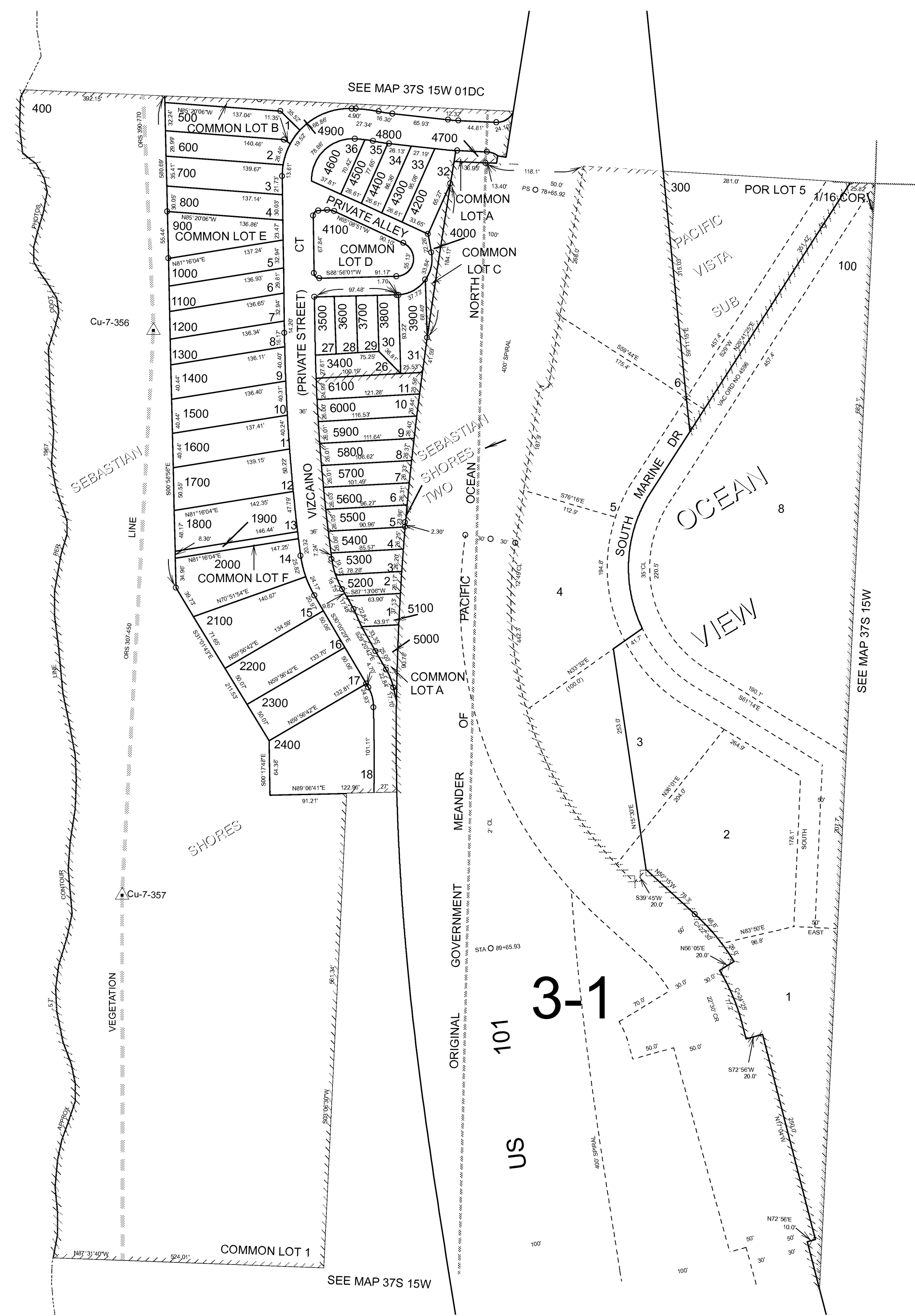


NW1/4 NE1/4 SECTION 12 T.37S. R.15W. W.M.  
CURRY COUNTY  
1" = 100'

37S 15W 12AB

OCEAN

PACIFIC



101  
US  
3-1

SEE MAP 37S 15W

SEE MAP 37S 15W

Revised RAA  
3/7/2007

37S 15W 12AB

THIS MAP WAS PREPARED FOR ASSESSMENT PURPOSE ONLY

NW 1/4 NE 1/4 SEC. 12 T.37S. R.15W. W.M. CURRY COUNTY

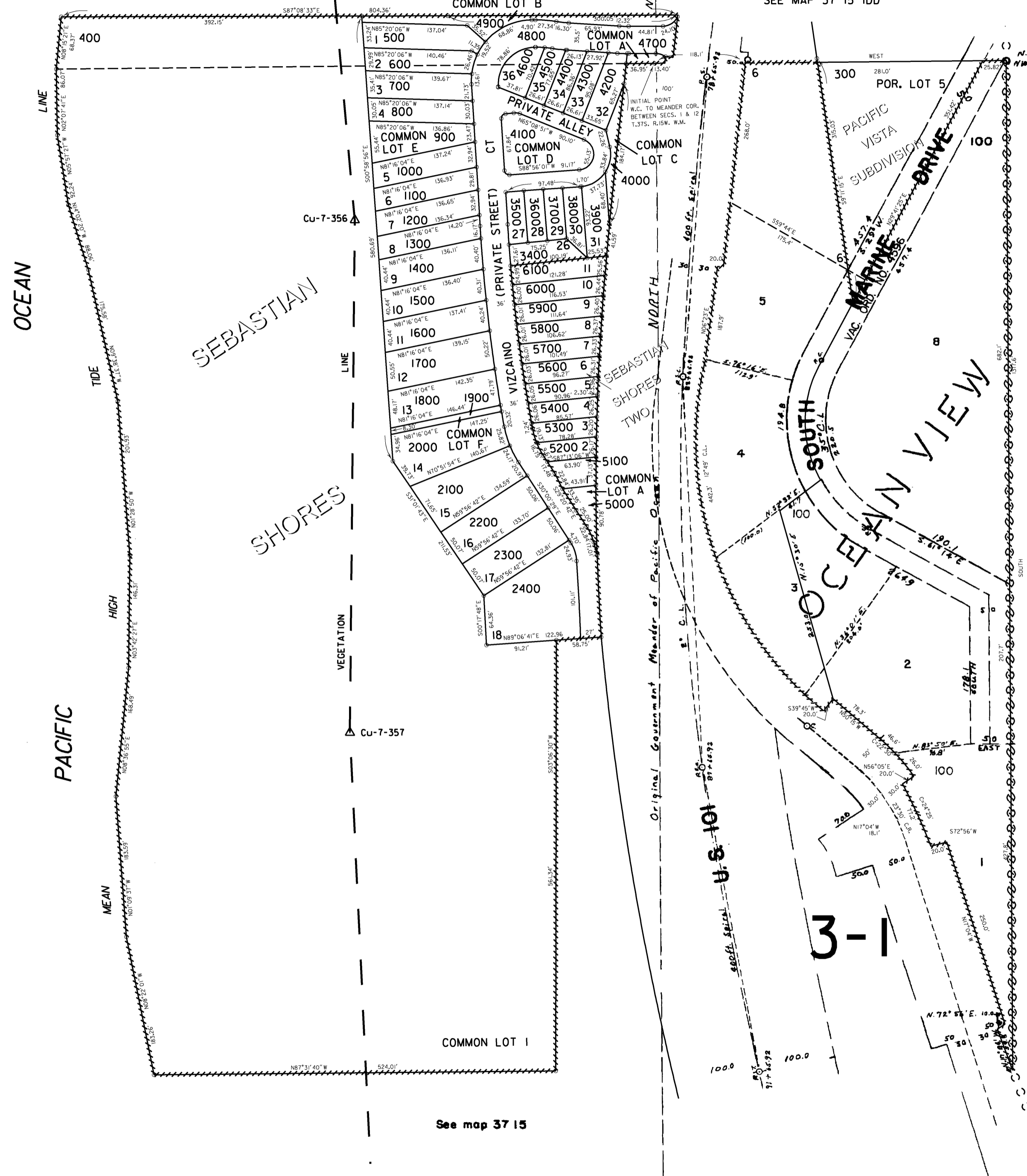
37 15 12AB

1" = 100'

SEE MAP 37 15 IDC

SEE MAP 37 15 IDD

CANCELLED NO. 200 2500 THRU 3300



See map 37 15

See map 37 15

3-1

Revised 9/26/2006, RAA 37 15 12AB

THIS MAP WAS PREPARED FOR ASSESSMENT PURPOSE ONLY

NW 1/4 NE 1/4 SEC. 12 T.37S. R.15W. W.M. CURRY COUNTY

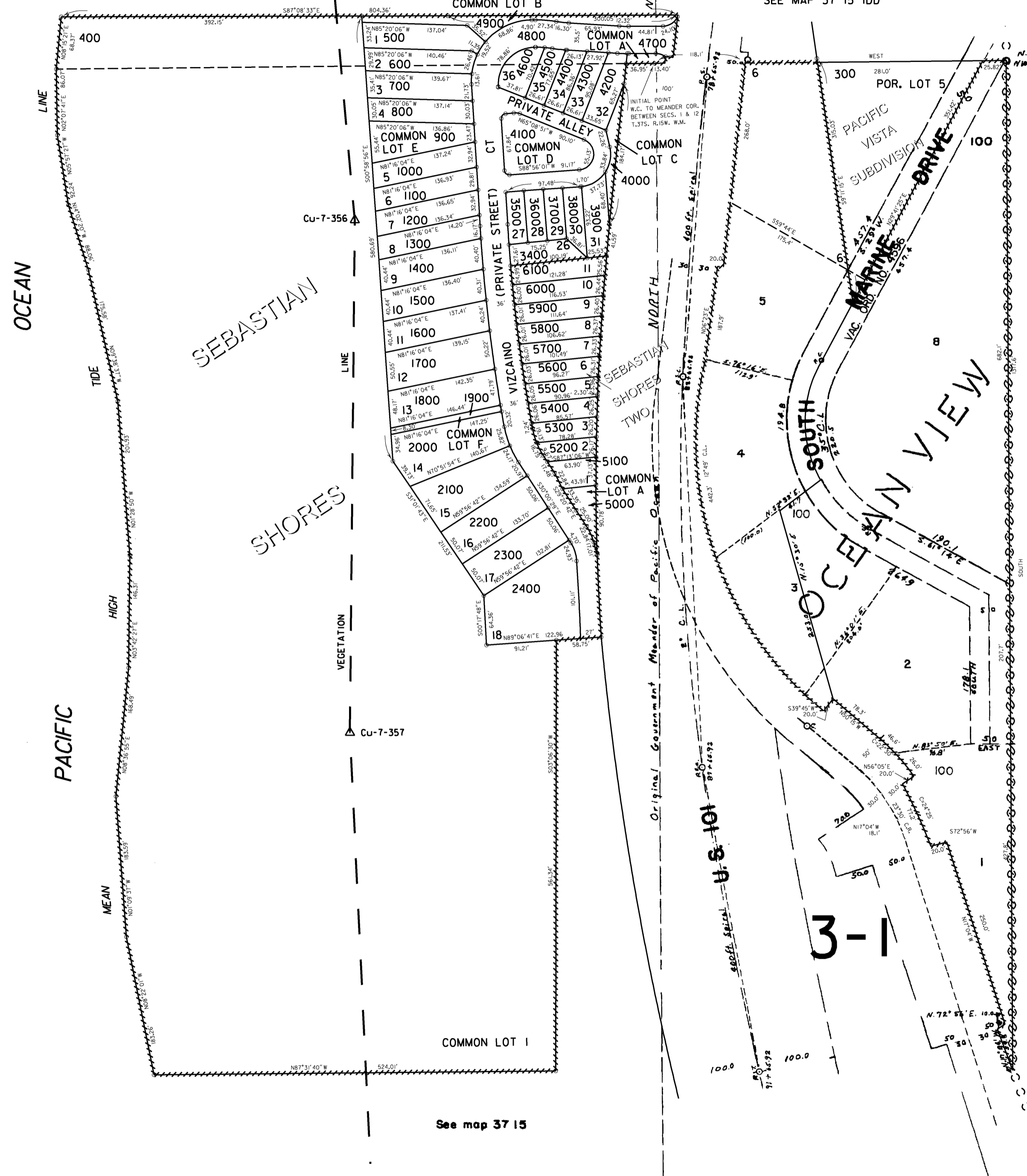
37 15 12AB

1" = 100'

SEE MAP 37 15 IDC

SEE MAP 37 15 IDD

CANCELLED NO. 200 2500 THRU 3300



See map 37 15

See map 37 15

Revised 9/26/2006, RAA 37 15 12AB

\$TIMES \$DATES \$FILES \$USERNAMES

THIS MAP WAS PREPARED FOR ASSESSMENT PURPOSE ONLY

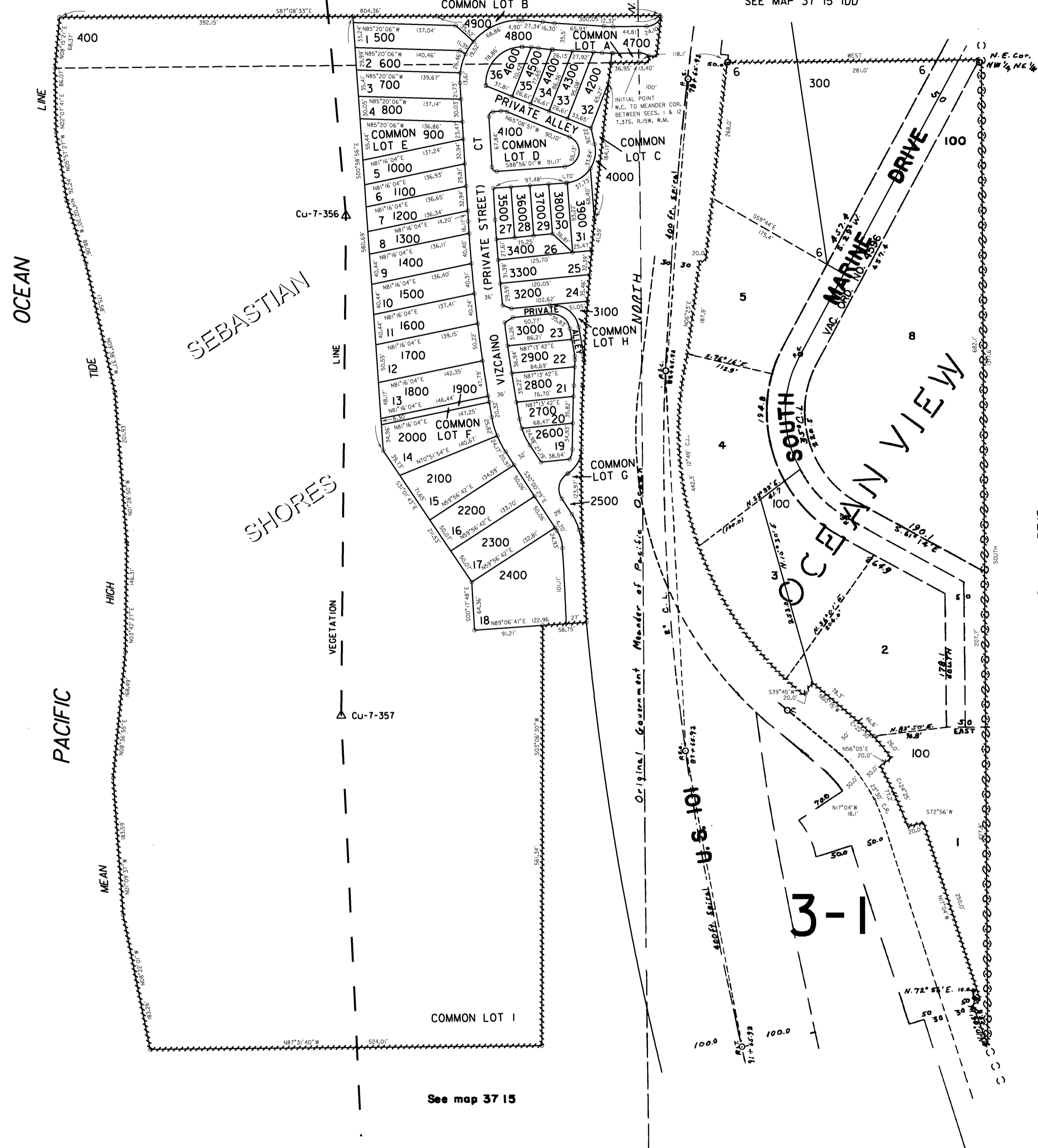
NW 1/4 NE 1/4 SEC. 12 T.37S. R.15W. W.M. CURRY COUNTY

37 15 12AB

1" = 100'

SEE MAP 37 15 IDC

SEE MAP 37 15 IDD



CANCELLED NO.'S 200

See map 37 15

See map 37 15

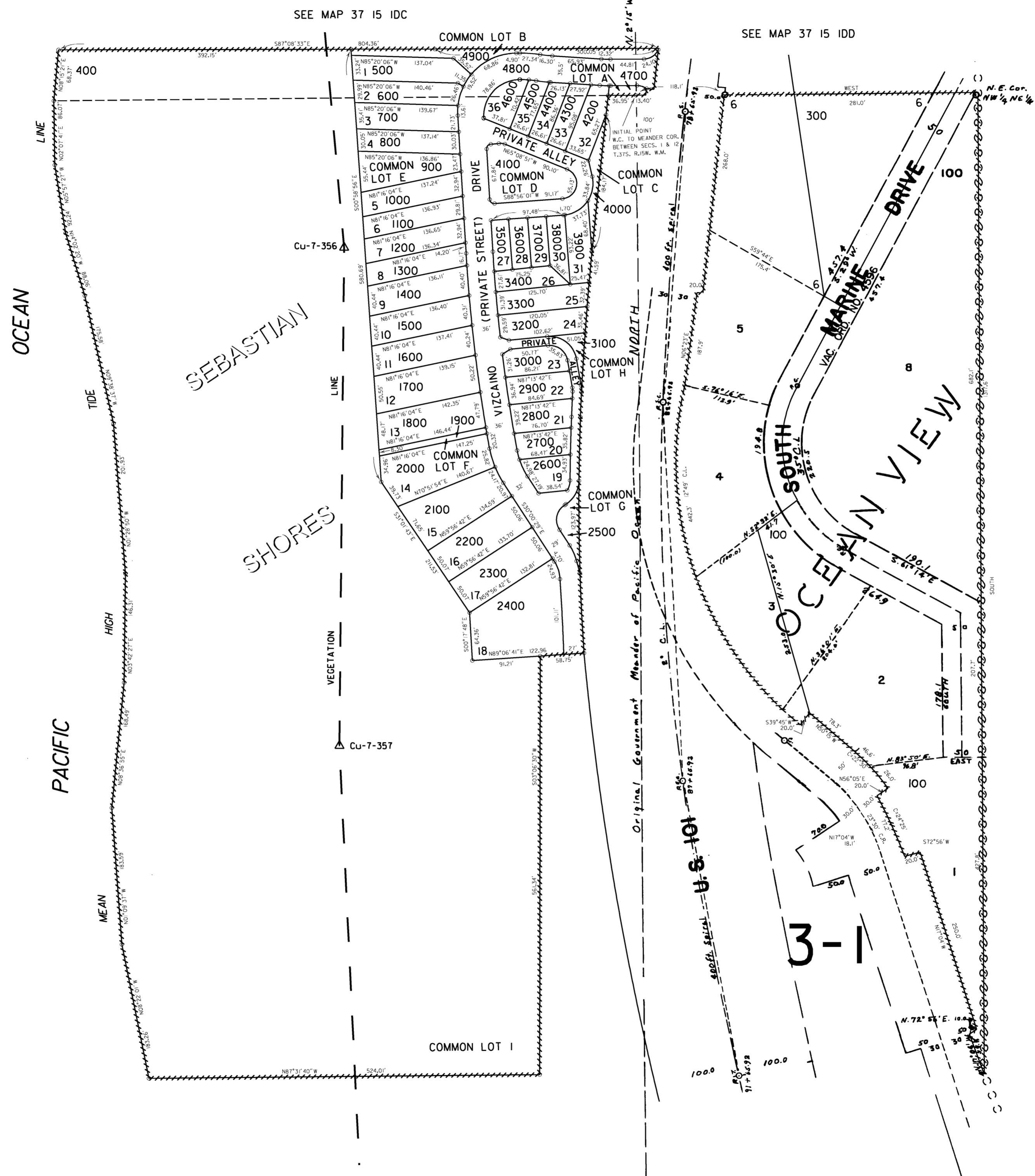
Revised 7/24/2006, RAA 37 15 12AB

THIS MAP WAS PREPARED FOR  
ASSESSMENT PURPOSE ONLY

NW 1/4 NE 1/4 SEC. 12 T.37S. R.15W. W.M.  
CURRY COUNTY

37 15 12AB

1" = 100'



CANCELLED NO.'S  
200

See map 37 15

See map 37 15

Revised  
2/24/2005, DBJ  
37 15 12AB