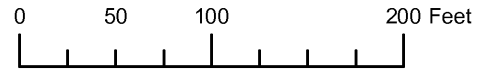
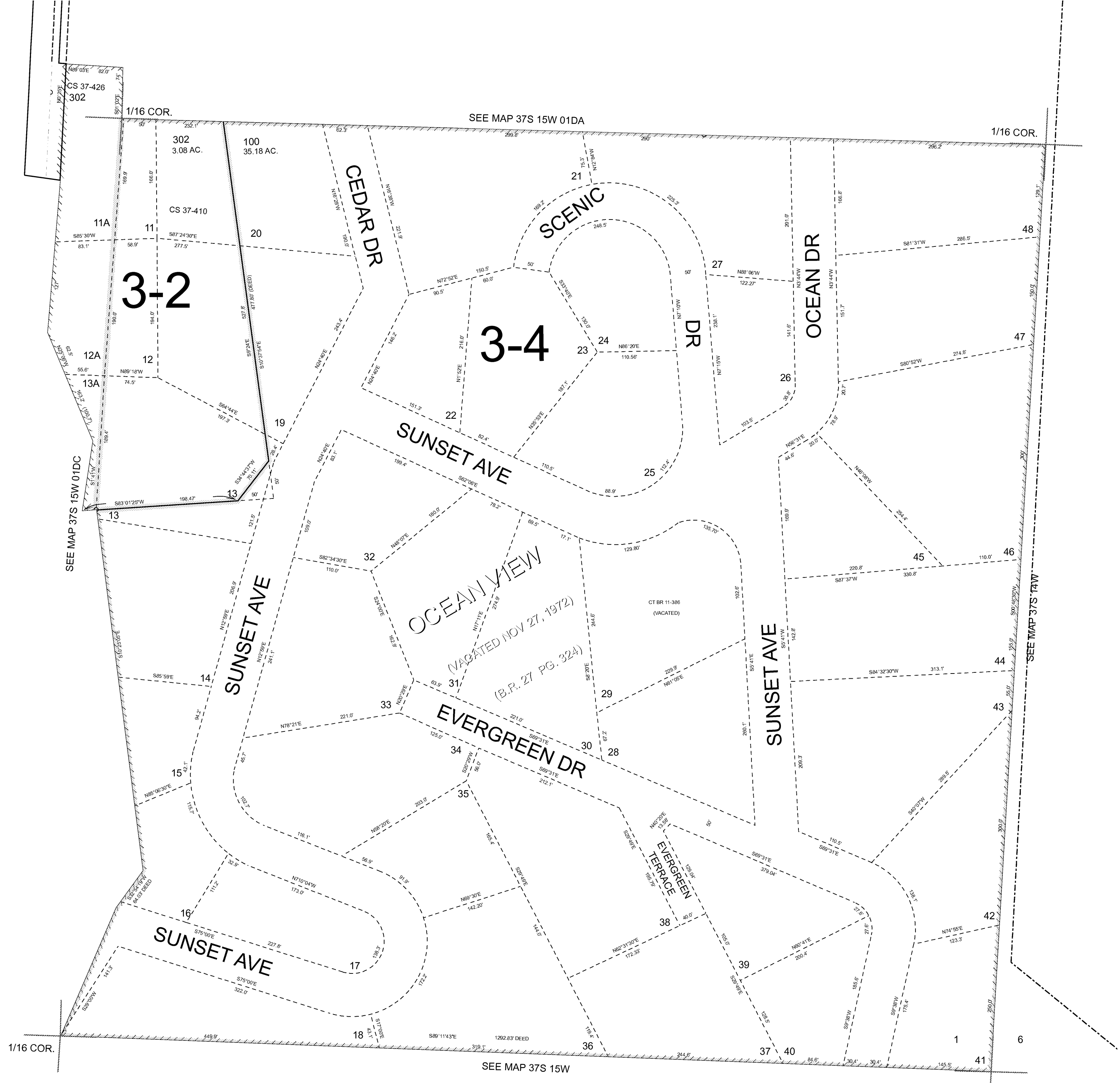


THIS MAP WAS PREPARED FOR ASSESSMENT PURPOSE ONLY



SE1/4 SE1/4 SECTION 01 T.37S. R.15W. W.M. CURRY COUNTY  
1" = 100'

37S 15W 01DD  
GOLD BEACH  
CANCELLED NO.  
200  
300  
301  
400

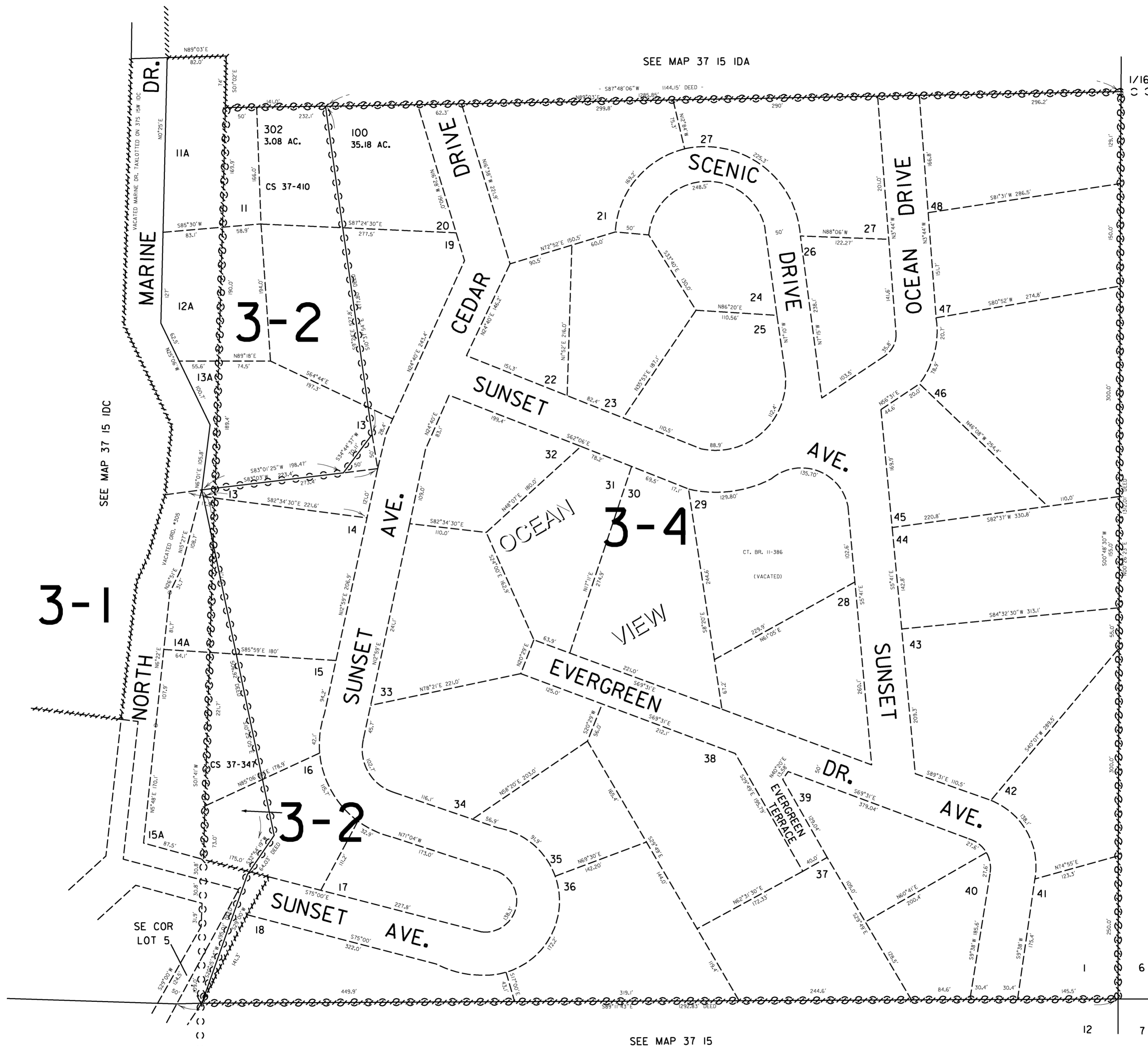


THIS MAP WAS PREPARED FOR  
ASSESSMENT PURPOSE ONLY

SE1/4 SE1/4 SEC. 1 T.37S. R.15W. W.M.  
CURRY COUNTY

1" = 100'

37 15 IDD  
GOLD BEACH



CANCELLED NO.  
200  
300  
301  
400

SEE MAP 37 14

SEE MAP 37 15

Revised  
6/14/2005, DBJ  
37 15 IDD  
GOLD BEACH