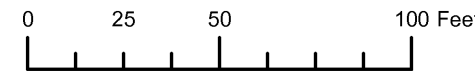


SUPPLEMENTAL MAP NO. 2
 S.W.1/4 S.E.1/4 SEC.1 T.37S. R.15W. W.M.
 CURRY COUNTY
 1" = 50'

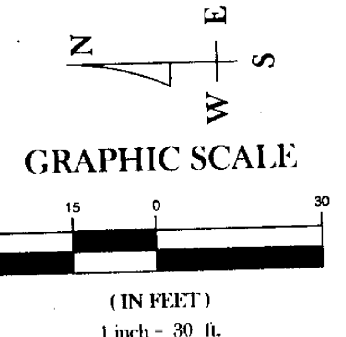
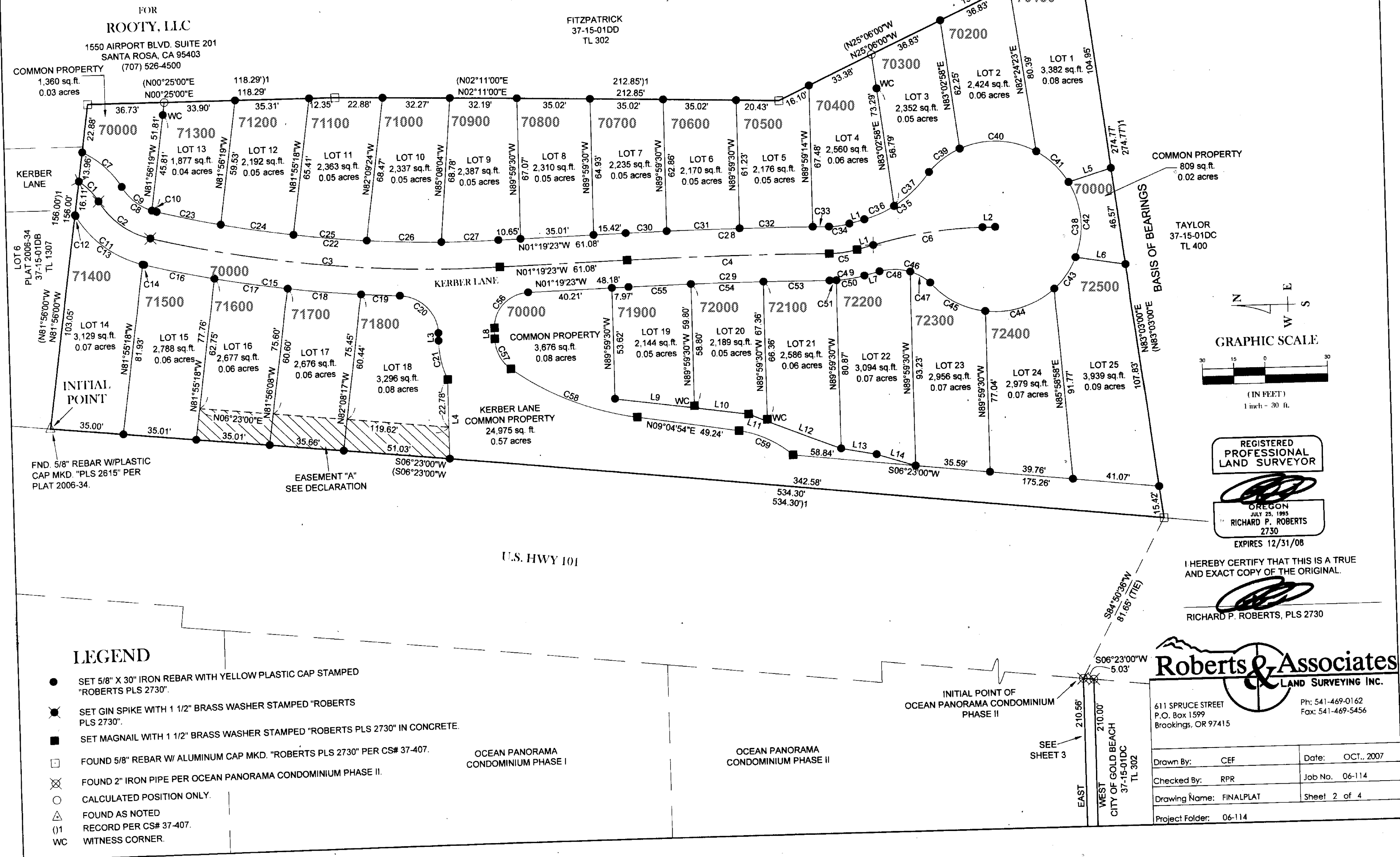
37S15W01DCS002
 GOLD BEACH
 SUPPLEMENTAL MAP NO.2
 CANCELLED:

THIS MAP WAS PREPARED FOR
 ASSESSMENT PURPOSE ONLY



PLAT NUMBER 2007-42
 INSTRUMENT NO. 2007-6714
 BREAKERS AT GOLD BEACH
 A PLANNED COMMUNITY

LOCATED IN
 SE1/4, SECTION 1, T37S, R15W.
 WILLAMETTE MERIDIAN,
 CITY OF GOLD BEACH, CURRY COUNTY, OREGON



REGISTERED
 PROFESSIONAL
 LAND SURVEYOR
 OREGON
 JULY 25, 1995
 RICHARD P. ROBERTS
 2730
 EXPIRES 12/31/08

I HEREBY CERTIFY THAT THIS IS A TRUE
 AND EXACT COPY OF THE ORIGINAL.
 RICHARD P. ROBERTS, PLS 2730

- LEGEND**
- SET 5/8" X 30" IRON REBAR WITH YELLOW PLASTIC CAP STAMPED "ROBERTS PLS 2730".
 - ⊗ SET GIN SPIKE WITH 1 1/2" BRASS WASHER STAMPED "ROBERTS PLS 2730".
 - SET MAGNAIL WITH 1 1/2" BRASS WASHER STAMPED "ROBERTS PLS 2730" IN CONCRETE.
 - FOUND 5/8" REBAR W/ ALUMINUM CAP MKD. "ROBERTS PLS 2730" PER CS# 37-407.
 - ⊗ FOUND 2" IRON PIPE PER OCEAN PANORAMA CONDOMINIUM PHASE II.
 - CALCULATED POSITION ONLY.
 - △ FOUND AS NOTED
 - (1) RECORD PER CS# 37-407.
 - WC WITNESS CORNER.

Roberts & Associates
 LAND SURVEYING INC.
 611 SPRUCE STREET
 P.O. Box 1599
 Brookings, OR 97415
 Ph: 541-469-0162
 Fax: 541-469-5456

Drawn By: CEF	Date: OCT., 2007
Checked By: RPR	Job No. 06-114
Drawing Name: FINALPLAT	Sheet 2 of 4
Project Folder: 06-114	

Revised RAA
 6/16/2008

SUPPLEMENTAL MAP NO.2
 GOLD BEACH
 37S15W01DCS002