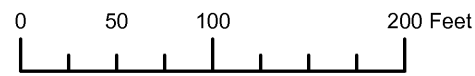


THIS MAP WAS PREPARED FOR ASSESSMENT PURPOSE ONLY

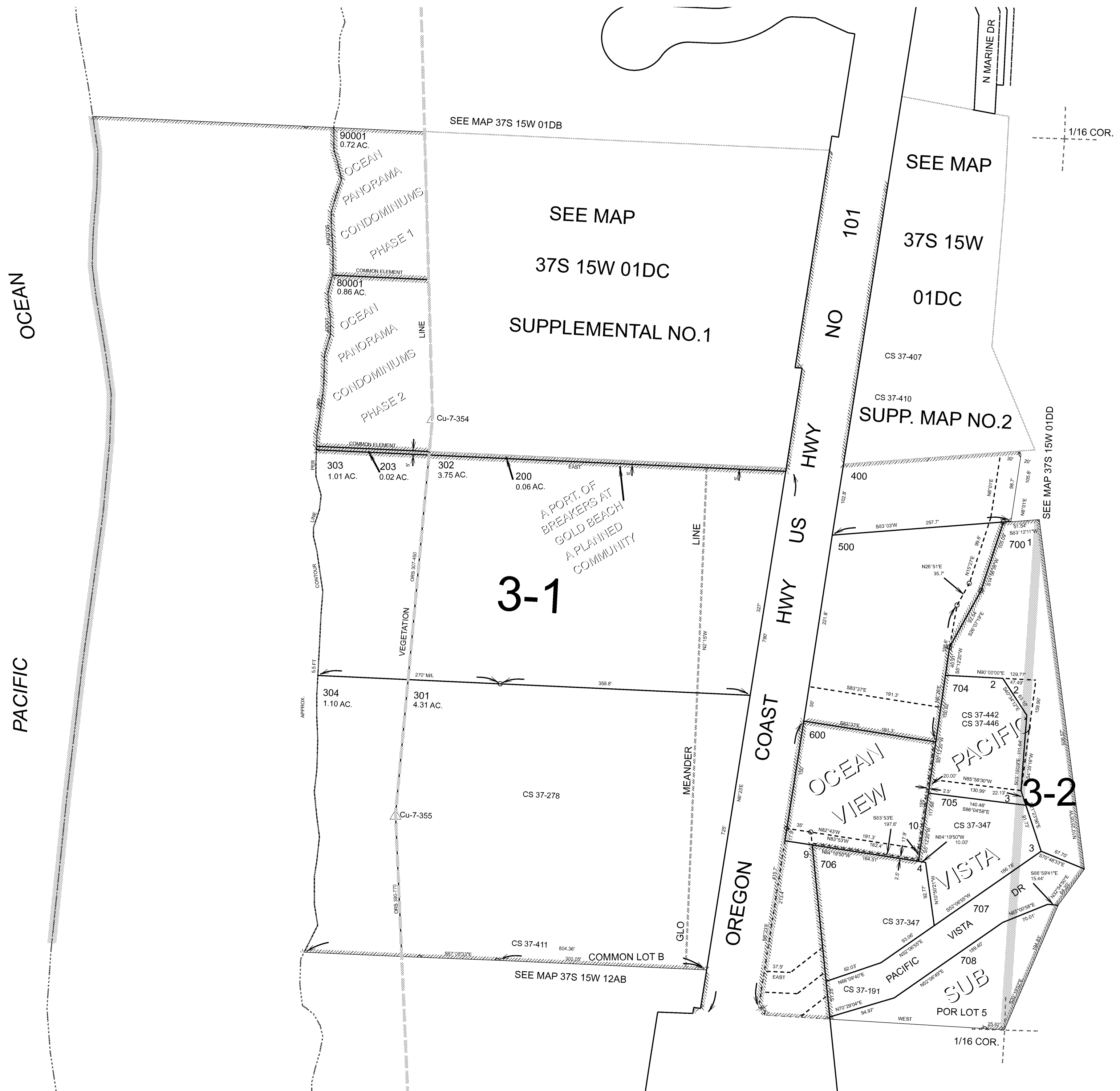


S.W.1/4 S.E.1/4 SEC.1 T.37S. R.15W. W.M.  
CURRY COUNTY

1" = 100'

37S15W01DC  
GOLD BEACH

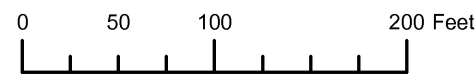
- CANCELLED:
- 100
  - 201
  - 202
  - 204 THRU 206
  - 300
  - 305
  - 601
  - 701 THRU 703
  - 800
  - 90002



Revised:  
2/10/2009

GOLD BEACH  
37S15W01DC

THIS MAP WAS PREPARED FOR ASSESSMENT PURPOSE ONLY



S.W.1/4 S.E.1/4 SEC.1 T.37S. R.15W. W.M.  
CURRY COUNTY  
1" = 100'

37S15W01DC  
GOLD BEACH

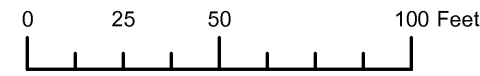
- CANCELLED:
- 100
  - 201
  - 202
  - 204 THRU 206
  - 300
  - 305
  - 601
  - 701 THRU 703
  - 800
  - 90002



SUPPLEMENTAL MAP NO. 2  
S.W.1/4 S.E.1/4 SEC.1 T.37S. R.15W. W.M.  
CURRY COUNTY  
1" = 50'

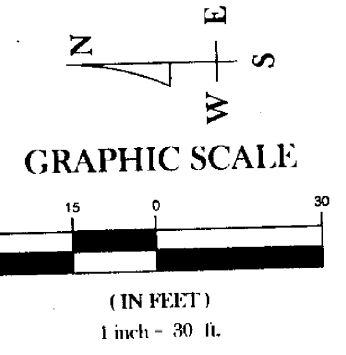
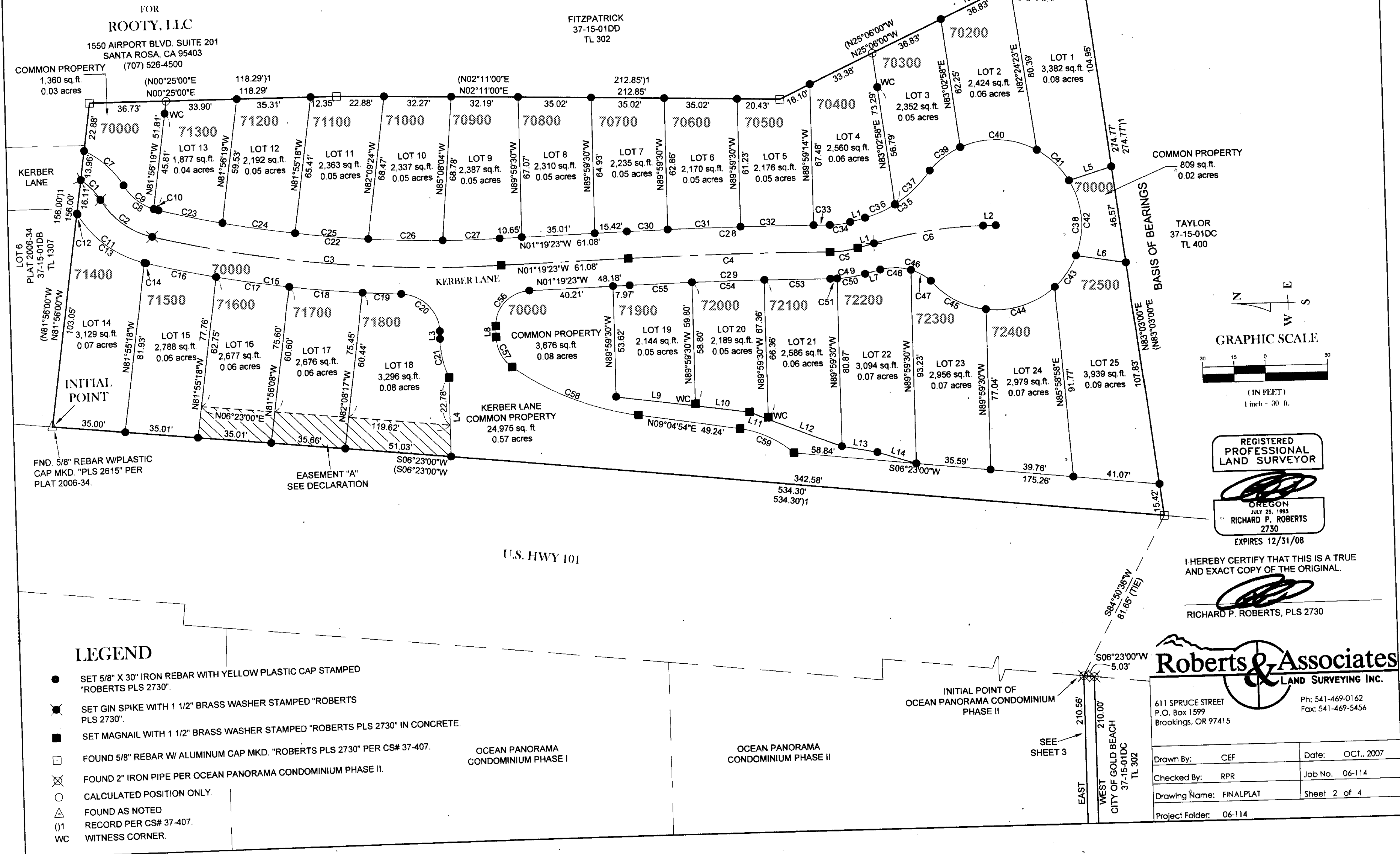
37S15W01DCS002  
GOLD BEACH  
SUPPLEMENTAL MAP NO.2  
CANCELLED:

THIS MAP WAS PREPARED FOR  
ASSESSMENT PURPOSE ONLY



PLAT NUMBER 2007-42  
INSTRUMENT NO. 2007-6714  
BREAKERS AT GOLD BEACH  
A PLANNED COMMUNITY

LOCATED IN  
SE1/4, SECTION 1, T37S, R15W.  
WILLAMETTE MERIDIAN,  
CITY OF GOLD BEACH, CURRY COUNTY, OREGON



REGISTERED  
PROFESSIONAL  
LAND SURVEYOR  
  
RICHARD P. ROBERTS  
2730  
EXPIRES 12/31/08

I HEREBY CERTIFY THAT THIS IS A TRUE  
AND EXACT COPY OF THE ORIGINAL.  
  
RICHARD P. ROBERTS, PLS 2730

- LEGEND**
- SET 5/8" X 30" IRON REBAR WITH YELLOW PLASTIC CAP STAMPED "ROBERTS PLS 2730".
  - ⊗ SET GIN SPIKE WITH 1 1/2" BRASS WASHER STAMPED "ROBERTS PLS 2730".
  - SET MAGNAIL WITH 1 1/2" BRASS WASHER STAMPED "ROBERTS PLS 2730" IN CONCRETE.
  - FOUND 5/8" REBAR W/ ALUMINUM CAP MKD. "ROBERTS PLS 2730" PER CS# 37-407.
  - ⊗ FOUND 2" IRON PIPE PER OCEAN PANORAMA CONDOMINIUM PHASE II.
  - CALCULATED POSITION ONLY.
  - △ FOUND AS NOTED
  - (1) RECORD PER CS# 37-407.
  - WC WITNESS CORNER.

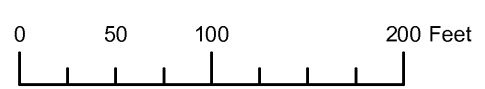
**Roberts & Associates**  
LAND SURVEYING INC.  
611 SPRUCE STREET  
P.O. Box 1599  
Brookings, OR 97415  
Ph: 541-469-0162  
Fax: 541-469-5456

Drawn By: CEF	Date: OCT., 2007
Checked By: RPR	Job No. 06-114
Drawing Name: FINALPLAT	Sheet 2 of 4
Project Folder: 06-114	

Revised RAA  
6/16/2008

SUPPLEMENTAL MAP NO.2  
GOLD BEACH  
37S15W01DCS002

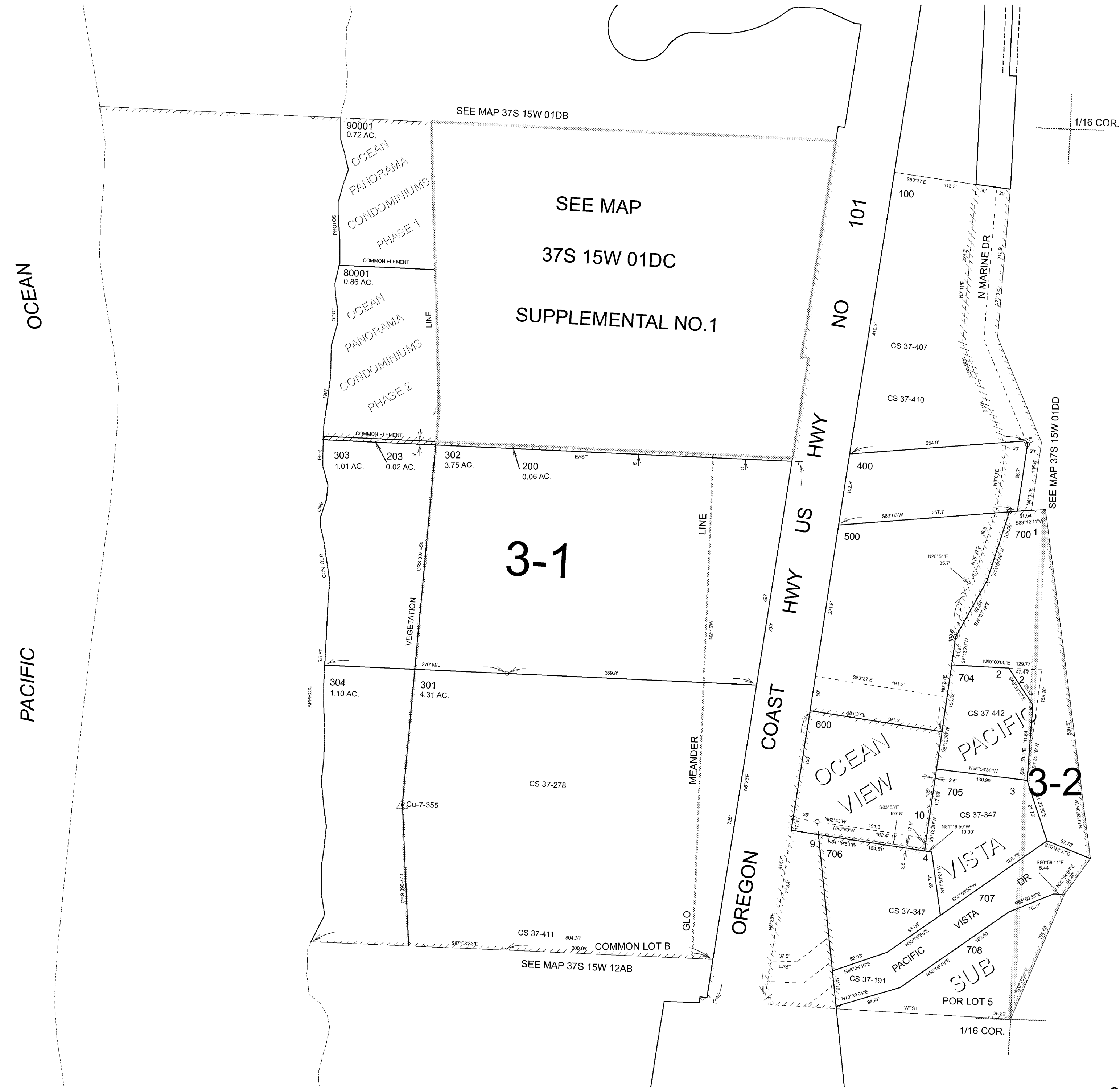
THIS MAP WAS PREPARED FOR ASSESSMENT PURPOSE ONLY



SW1/4 SE1/4 SECTION 01 T.37S. R.15W. W.M.  
CURRY COUNTY  
1" = 100'

37S 15W 01DC  
GOLD BEACH

- CANCELLED NO.
- 201
- 202
- 204 THRU 206
- 300
- 305
- 601
- 701 THRU 703
- 800
- 8000A1
- 80018
- 80021
- 90002



Revised RAA  
4/6/2007

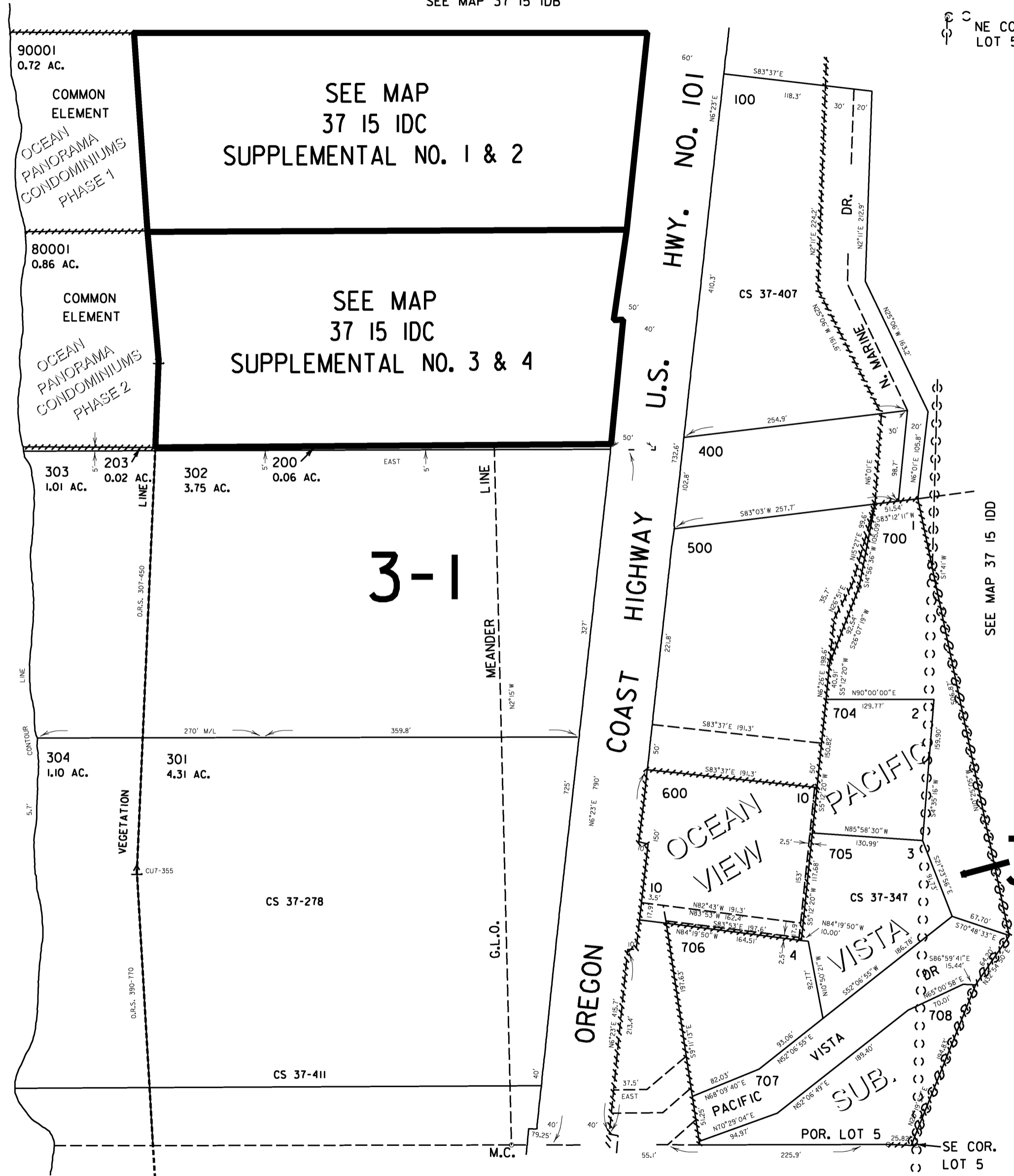
37S 15W 01DC  
GOLD BEACH

THIS MAP WAS PREPARED FOR ASSESSMENT PURPOSE ONLY

SW1/4 SE1/4 SEC.1 T.37S. R.15W. W.M. CURRY COUNTY  
1" = 100'

37 15 IDC GOLD BEACH

SEE MAP 37 15 IDB



- CANCELLED NO.
- 201
  - 202
  - 204 THRU
  - 206
  - 300
  - 305
  - 601
  - 701 THRU
  - 703
  - 800
  - 90002

NE COR. LOT 5

SEE MAP 37 15 IDD

SE COR. LOT 5

SEE MAP 37 15 I2AB

Revised  
9/26/2006, RAA  
37 15 IDC  
GOLD BEACH

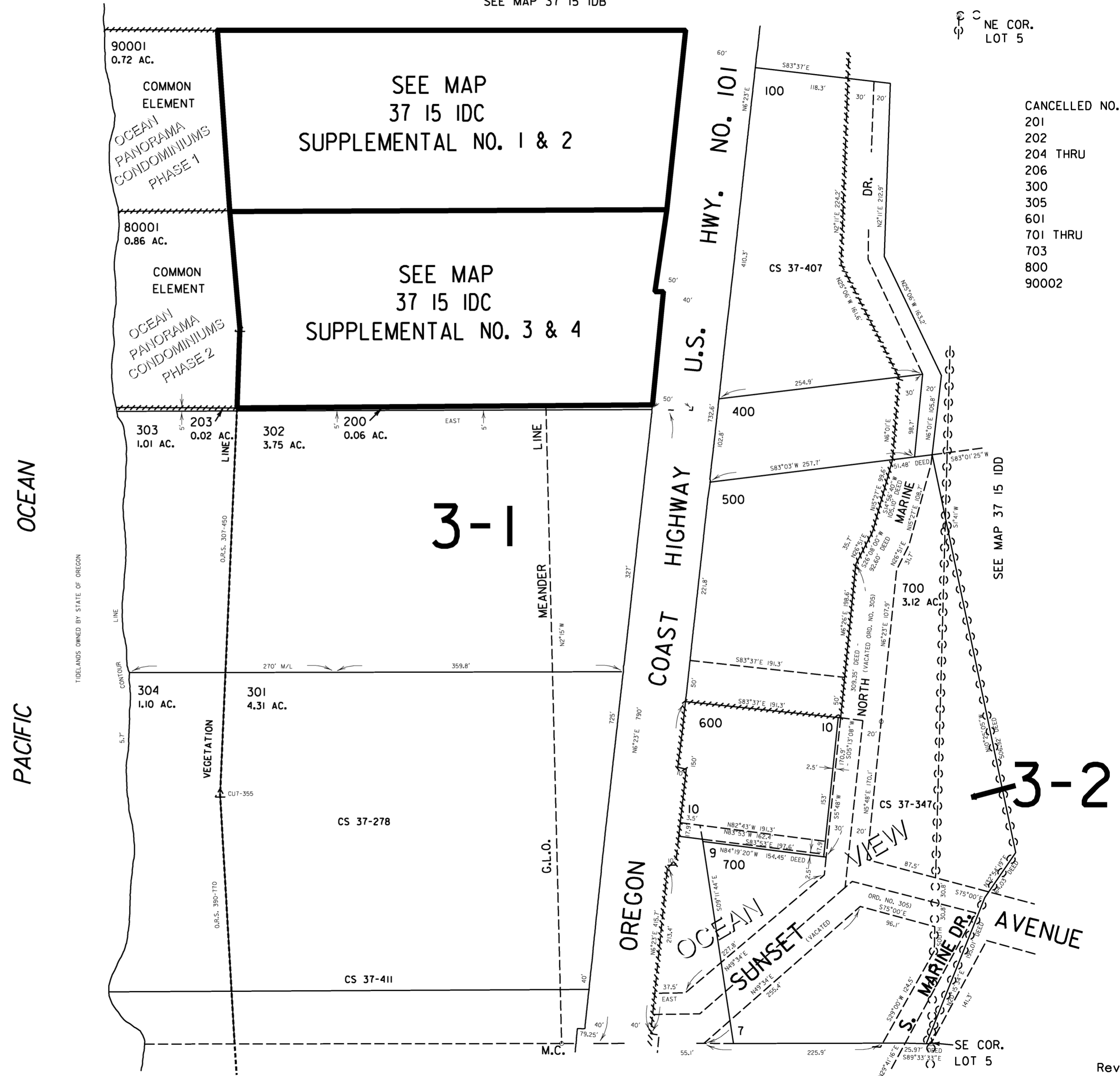
\$TIMES \$DATES \$FILES \$USERNAMES

THIS MAP WAS PREPARED FOR ASSESSMENT PURPOSE ONLY

SW1/4 SE1/4 SEC. 1 T.37S. R.15W. W.M.  
CURRY COUNTY  
1" = 100'

37 15 IDC  
GOLD BEACH

SEE MAP 37 15 IDB



NE COR. LOT 5

- CANCELLED NO.
- 201
- 202
- 204 THRU
- 206
- 300
- 305
- 601
- 701 THRU
- 703
- 800
- 90002

SEE MAP 37 15 IDD

3-2

SE COR. LOT 5

SEE MAP 37 15 I2AB

Revised  
8/16/2005, DBJ  
37 15 IDC  
GOLD BEACH

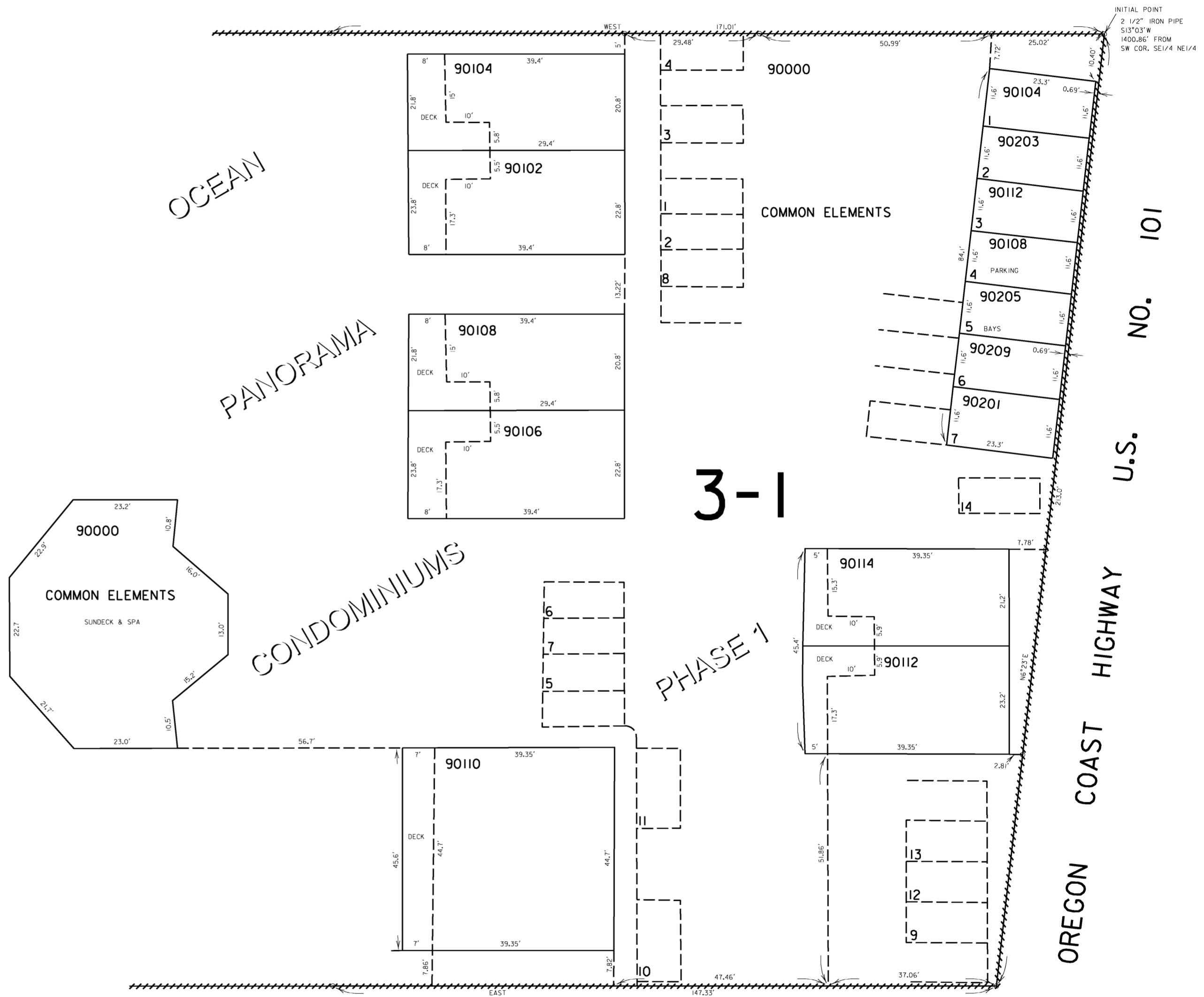
THIS MAP WAS PREPARED FOR  
ASSESSMENT PURPOSE ONLY

SUPPLEMENTAL MAP NO. 1  
SW1/4 SE1/4 SEC. 1 T.37S. R.15W. W.M.  
CURRY COUNTY

1" = 20'

37 15 IDC  
SUPPLEMENTAL  
MAP NO. 1  
GOLD BEACH

CANCELLED NO.  
90114  
90211



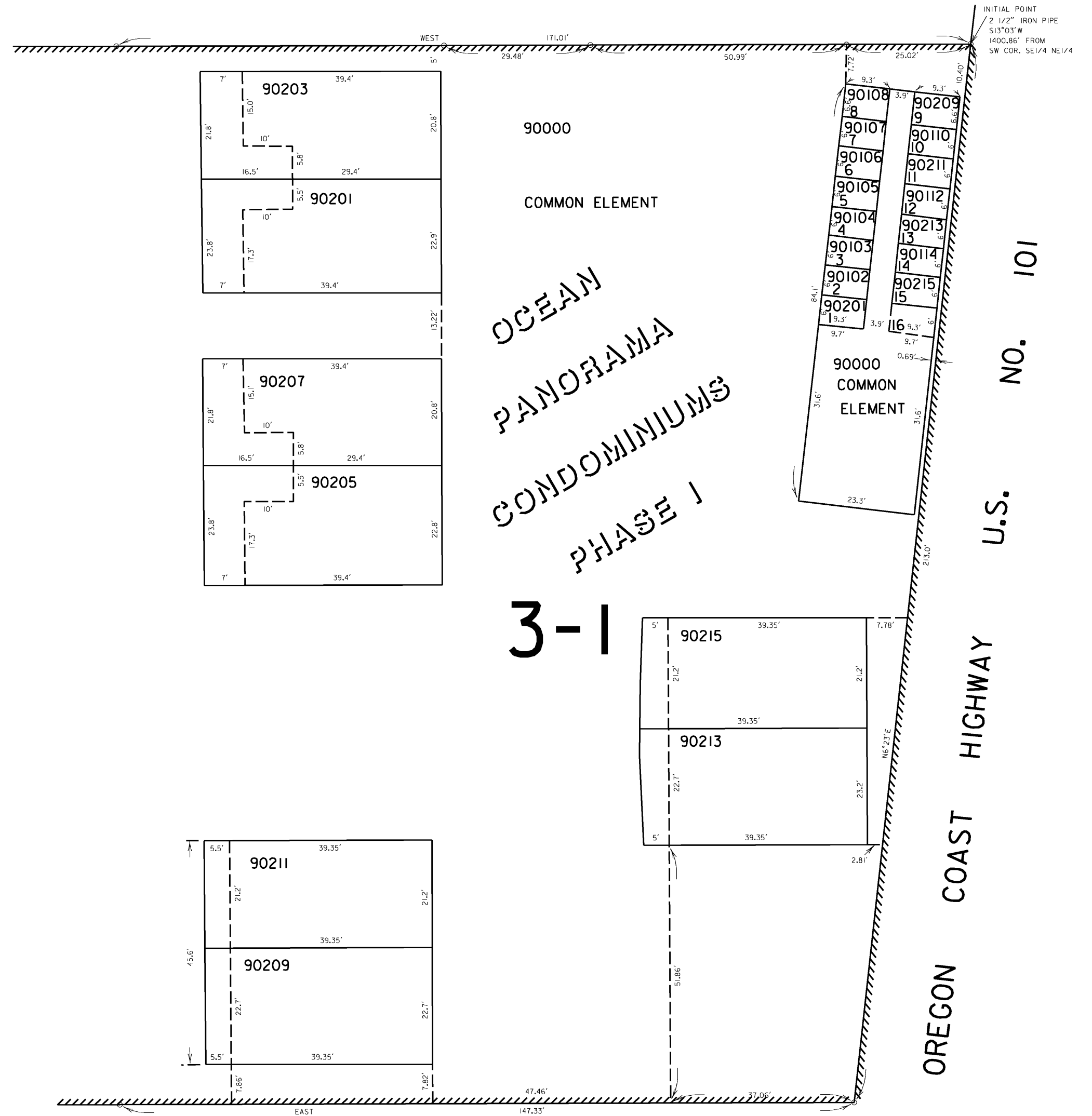
Revised  
4/25/2005, DBJ

37 15 IDC  
SUPPLEMENTAL  
MAP NO. 1  
GOLD BEACH

THIS MAP WAS PREPARED FOR  
ASSESSMENT PURPOSE ONLY

SUPPLEMENTAL MAP NO. 2  
SW1/4 SE1/4 SEC. 1 T.37S. R.15W. W.M.  
CURRY COUNTY  
1" = 20'

37 15 1 DC  
SUPPLEMENTAL  
MAP NO. 2  
GOLD BEACH



37 15 1 DC  
SUPPLEMENTAL  
MAP NO. 2  
GOLD BEACH  
Revised 1/5/01, SD

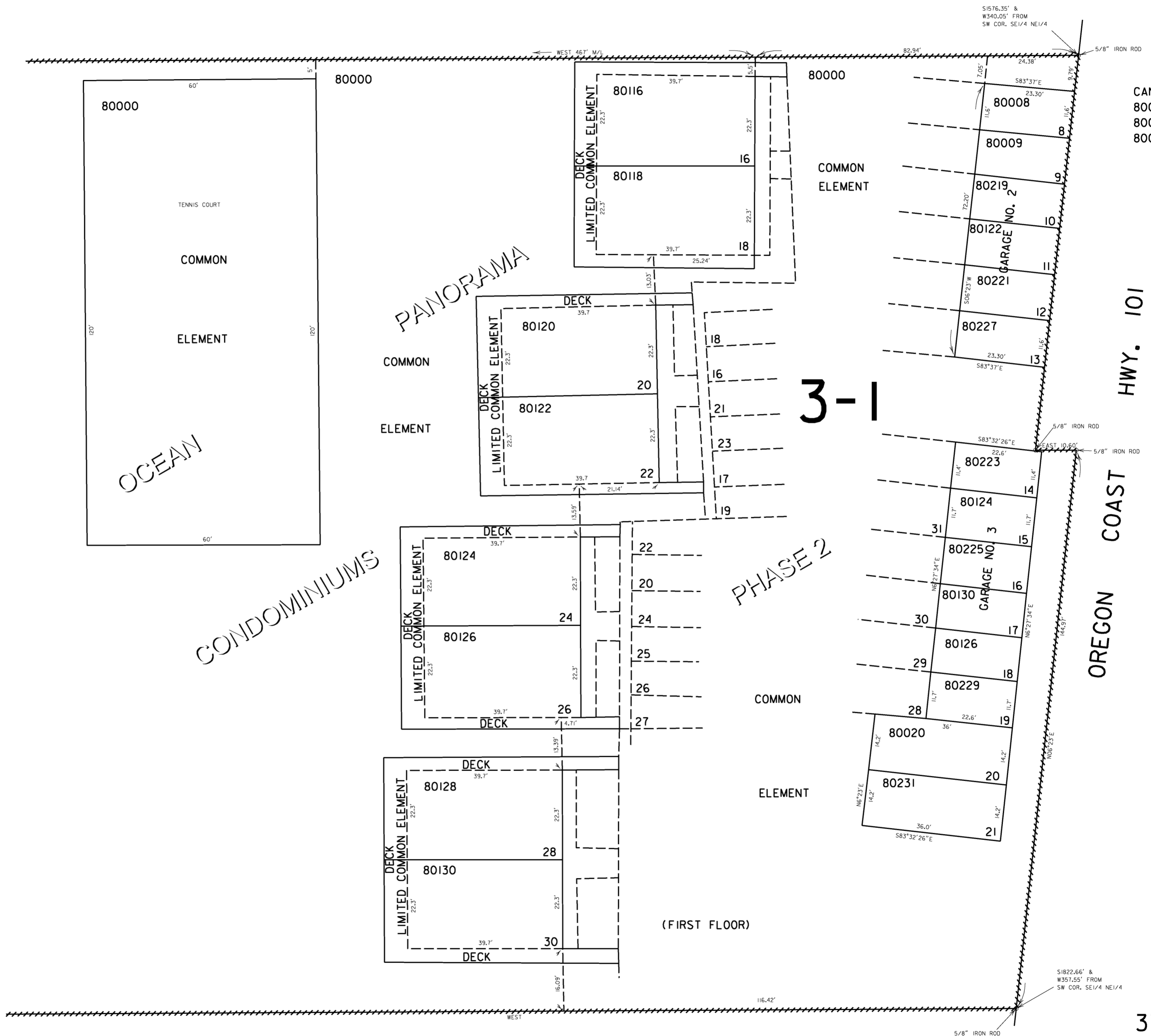


THIS MAP WAS PREPARED FOR  
ASSESSMENT PURPOSE ONLY

SUPPLEMENTAL MAP NO. 3  
SW1/4 SE1/4 SEC. 1 T.37S. R.15W. W.M.  
CURRY COUNTY

1" = 20'

37 15 IDC  
SUPPLEMENTAL  
MAP NO. 3  
GOLD BEACH



CANCELLED NO.  
80000A1  
80018  
80021

37 15 IDC  
SUPPLEMENTAL  
MAP NO. 3  
GOLD BEACH

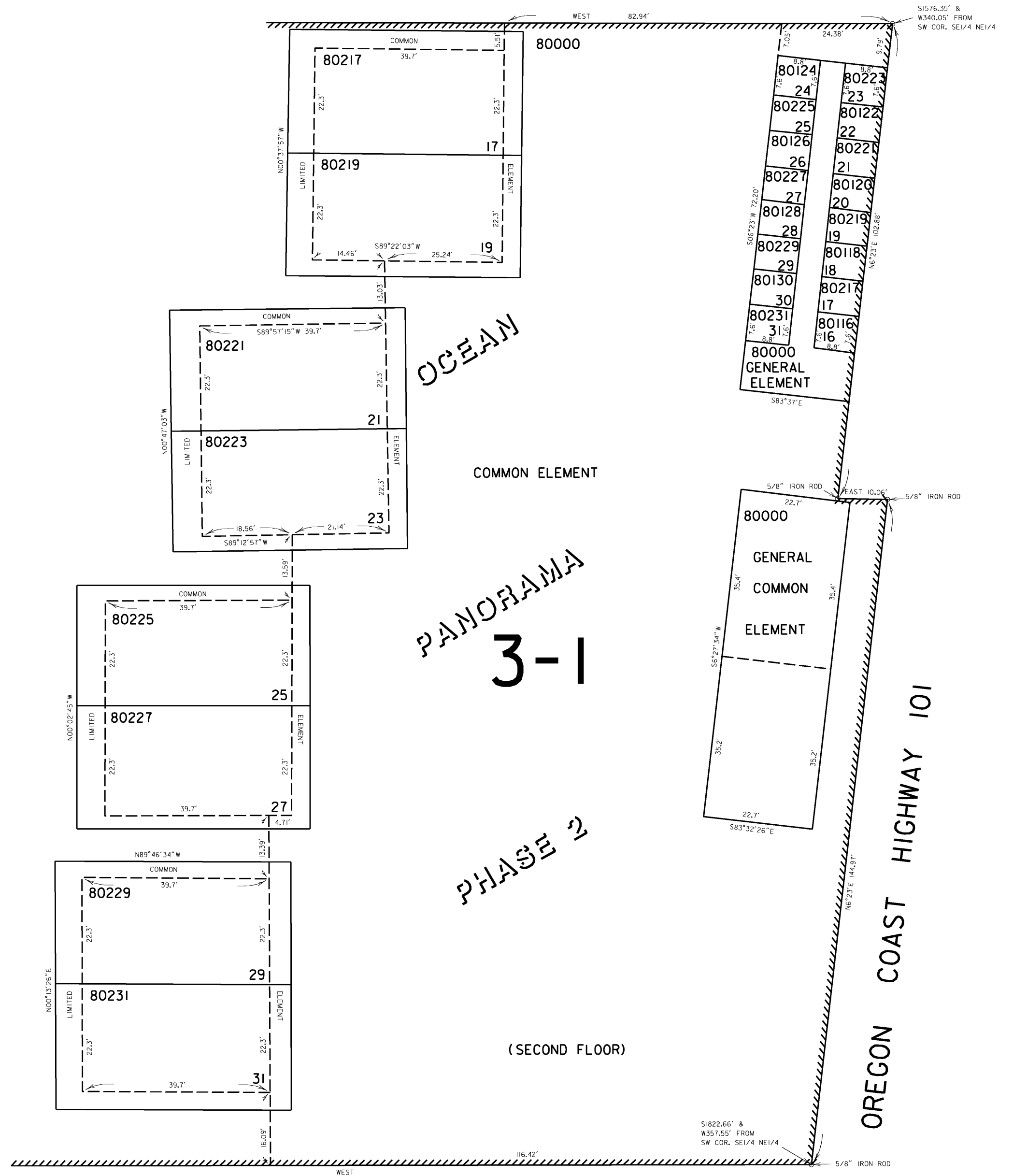
Revised  
8/16/2005, DBJ

THIS MAP WAS PREPARED FOR  
ASSESSMENT PURPOSE ONLY

# SUPPLEMENTAL MAP NO. 4 SW1/4 SE1/4 SEC. 1 T.37S. R.15W. W.M. CURRY COUNTY

1" = 20'

## 37 15 IDC SUPPLEMENTAL MAP NO. 4 GOLD BEACH



## 37 15 IDC SUPPLEMENTAL MAP NO. 4 GOLD BEACH

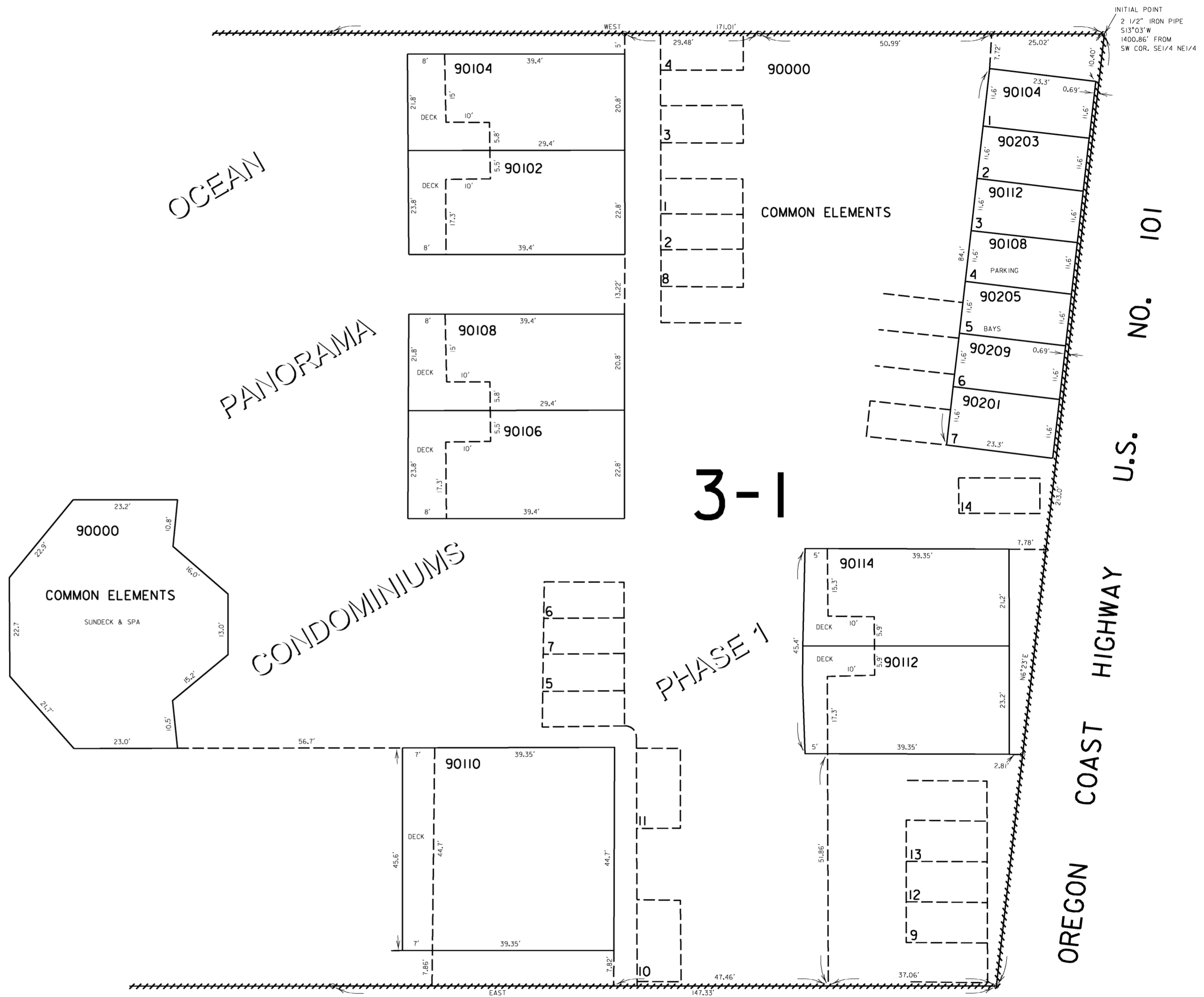
THIS MAP WAS PREPARED FOR  
ASSESSMENT PURPOSE ONLY

SUPPLEMENTAL MAP NO. 1  
SW1/4 SE1/4 SEC. 1 T.37S. R.15W. W.M.  
CURRY COUNTY

1" = 20'

37 15 IDC  
SUPPLEMENTAL  
MAP NO. 1  
GOLD BEACH

CANCELLED NO.  
90114  
90211



Revised  
4/25/2005, DBJ

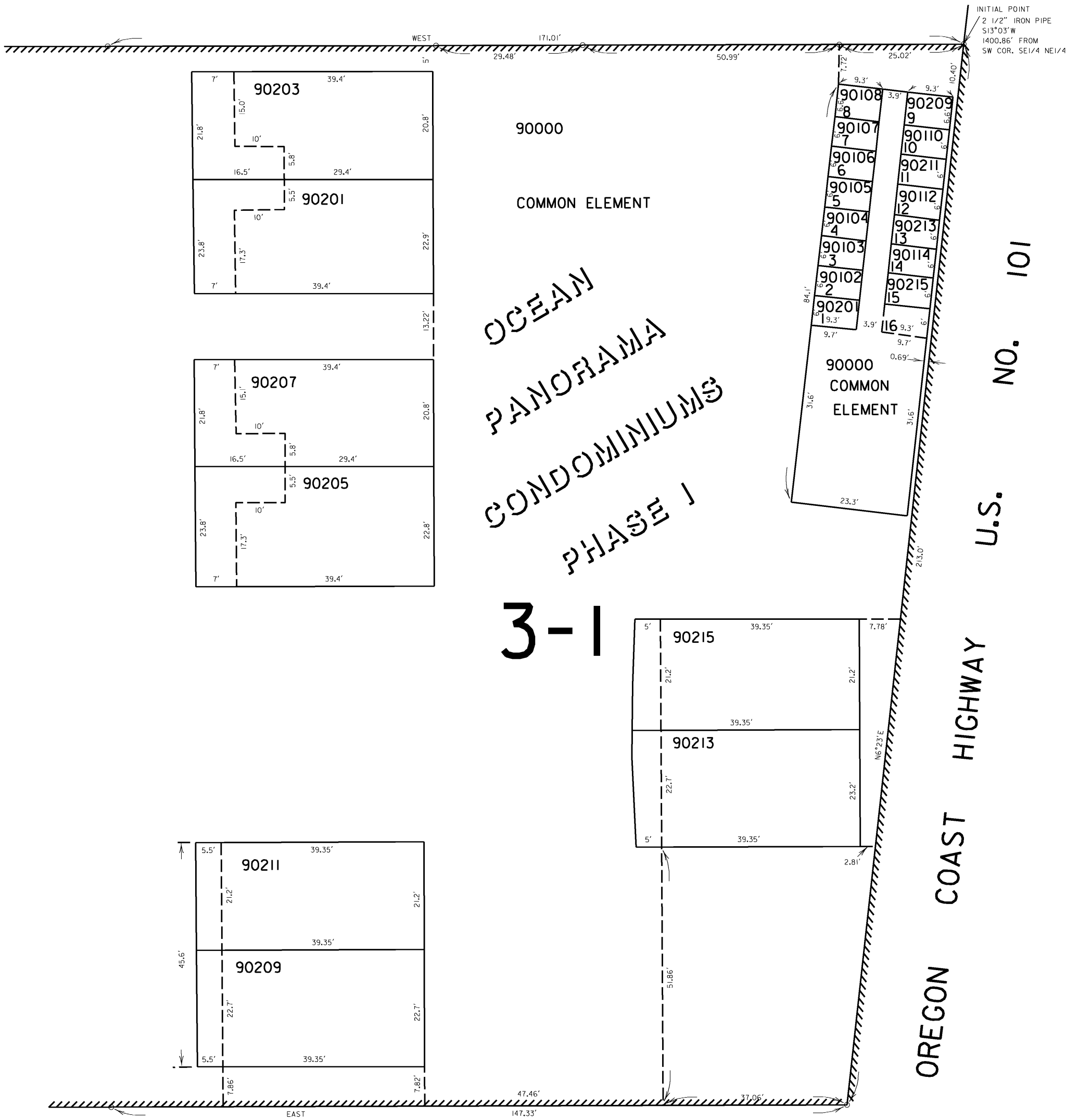
37 15 IDC  
SUPPLEMENTAL  
MAP NO. 1  
GOLD BEACH

THIS MAP WAS PREPARED FOR  
ASSESSMENT PURPOSE ONLY

SUPPLEMENTAL MAP NO. 2  
SW1/4 SE1/4 SEC. 1 T.37S. R.15W. W.M.  
CURRY COUNTY

1" = 20'

37 15 1 DC  
SUPPLEMENTAL  
MAP NO. 2  
GOLD BEACH



37 15 1 DC  
SUPPLEMENTAL  
MAP NO. 2  
GOLD BEACH

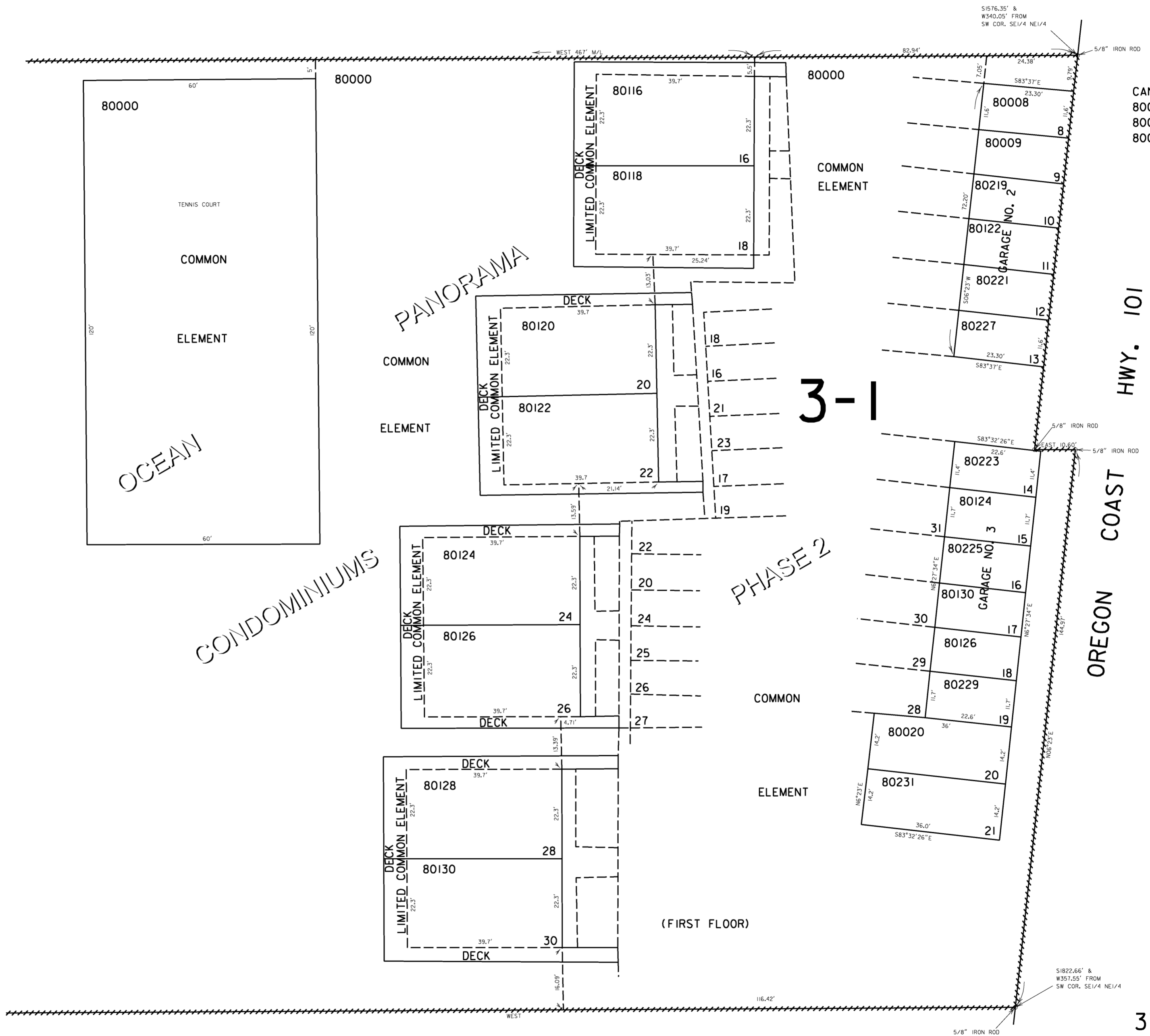
Revised 1/5/01, SD

THIS MAP WAS PREPARED FOR  
ASSESSMENT PURPOSE ONLY

SUPPLEMENTAL MAP NO. 3  
SW1/4 SE1/4 SEC. 1 T.37S. R.15W. W.M.  
CURRY COUNTY

1" = 20'

37 15 IDC  
SUPPLEMENTAL  
MAP NO. 3  
GOLD BEACH



CANCELLED NO.  
80000A1  
80018  
80021

3-1

(FIRST FLOOR)

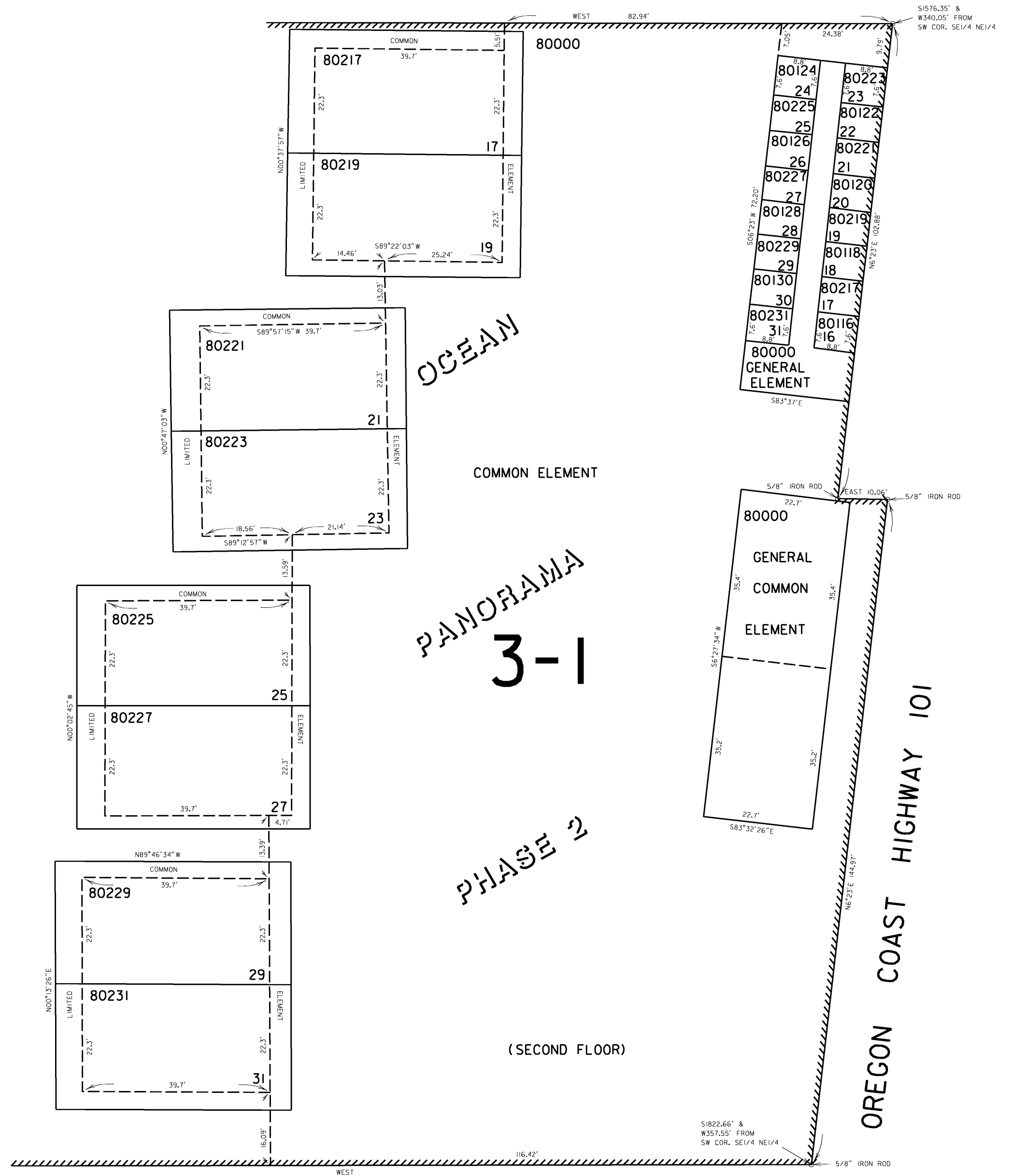
37 15 IDC  
SUPPLEMENTAL  
MAP NO. 3  
GOLD BEACH

Revised  
8/16/2005, DBJ

THIS MAP WAS PREPARED FOR  
ASSESSMENT PURPOSE ONLY

SUPPLEMENTAL MAP NO. 4  
SW1/4 SE1/4 SEC. 1 T.37S. R.15W. W.M.  
CURRY COUNTY  
1" = 20'

37 15 IDC  
SUPPLEMENTAL  
MAP NO. 4  
GOLD BEACH



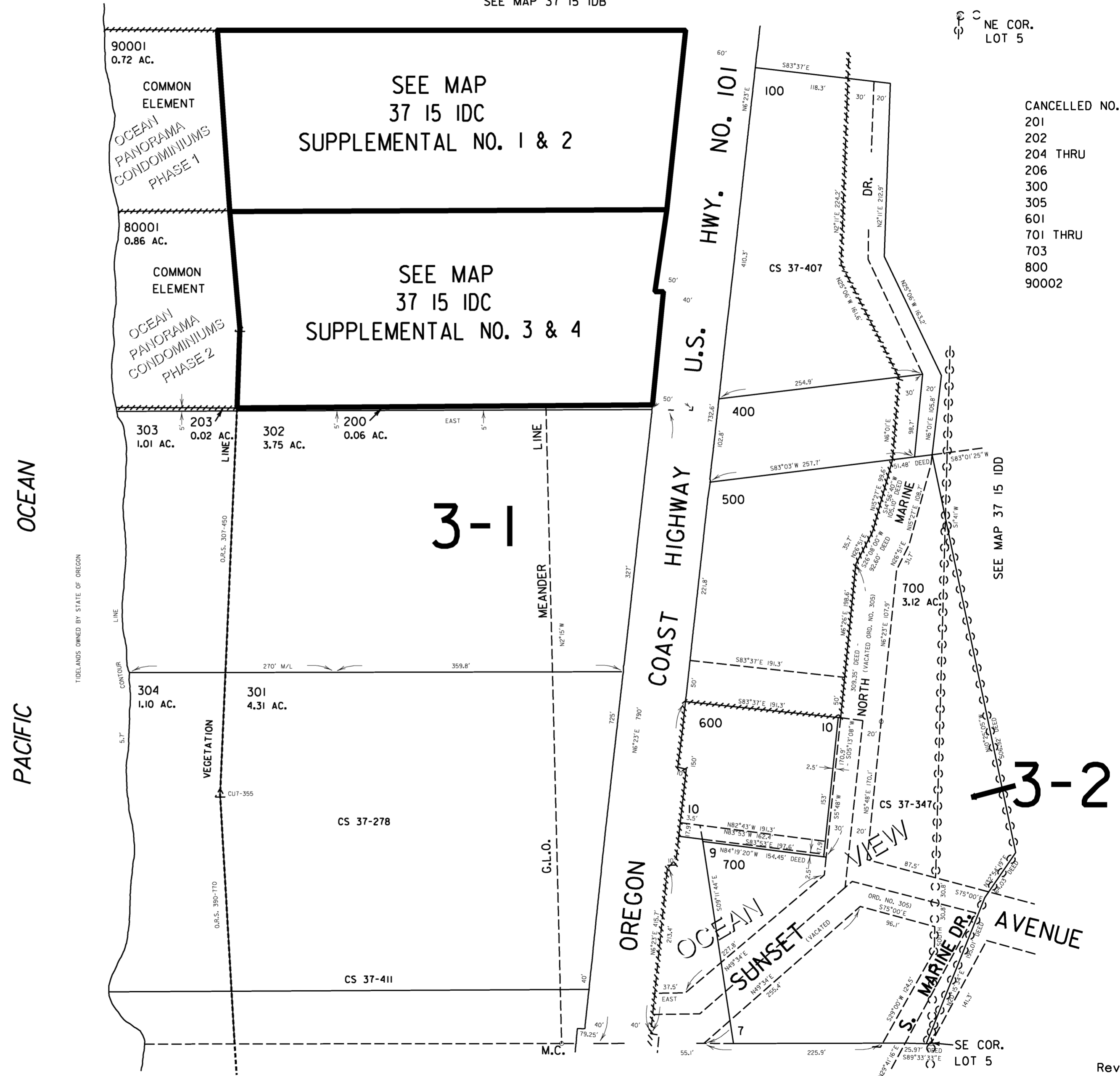
37 15 IDC  
SUPPLEMENTAL  
MAP NO. 4  
GOLD BEACH  
Revised 1/8/01, SD

THIS MAP WAS PREPARED FOR ASSESSMENT PURPOSE ONLY

SW1/4 SE1/4 SEC. 1 T.37S. R.15W. W.M.  
CURRY COUNTY  
1" = 100'

37 15 IDC  
GOLD BEACH

SEE MAP 37 15 IDB



NE COR.  
LOT 5

- CANCELLED NO.
- 201
- 202
- 204 THRU
- 206
- 300
- 305
- 601
- 701 THRU
- 703
- 800
- 90002

SEE MAP 37 15 IDD

3-2

SEE MAP 37 15 I2AB

SE COR.  
LOT 5

Revised  
8/16/2005, DBJ  
37 15 IDC  
GOLD BEACH