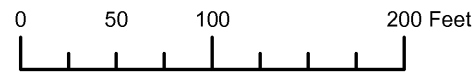


THIS MAP WAS PREPARED FOR ASSESSMENT PURPOSE ONLY



N.W.1/4 S.E.1/4 SEC.1 T.37S. R.15W. W.M.
CURRY COUNTY
1" = 100'

37S15W01DB
GOLD BEACH



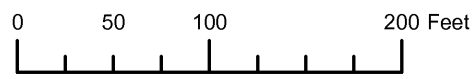
- CANCELLED:
- 101
 - 102
 - 401
 - 800
 - 900
 - 1100
 - 1200
 - 1201
 - 1204 THRU 1209
 - 1301
 - 90000 THRU 90215

1/16 COR.

Revised: RAA
7/13/2009

GOLD BEACH
37S15W01DB

THIS MAP WAS PREPARED FOR ASSESSMENT PURPOSE ONLY



N.W.1/4 S.E.1/4 SEC.1 T.37S. R.15W. W.M.
CURRY COUNTY
1" = 100'

37S15W01DB
GOLD BEACH

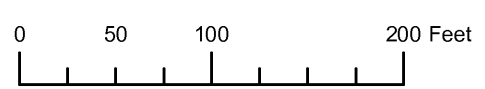
- CANCELLED:
- 101
 - 102
 - 201
 - 402
 - 800
 - 900
 - 1100
 - 1200
 - 1201
 - 1204 THRU 1209
 - 1301
 - 90000 THRU 90215



1/16 COR.

Revised RAA
6/17/2008
GOLD BEACH
37S15W01DB

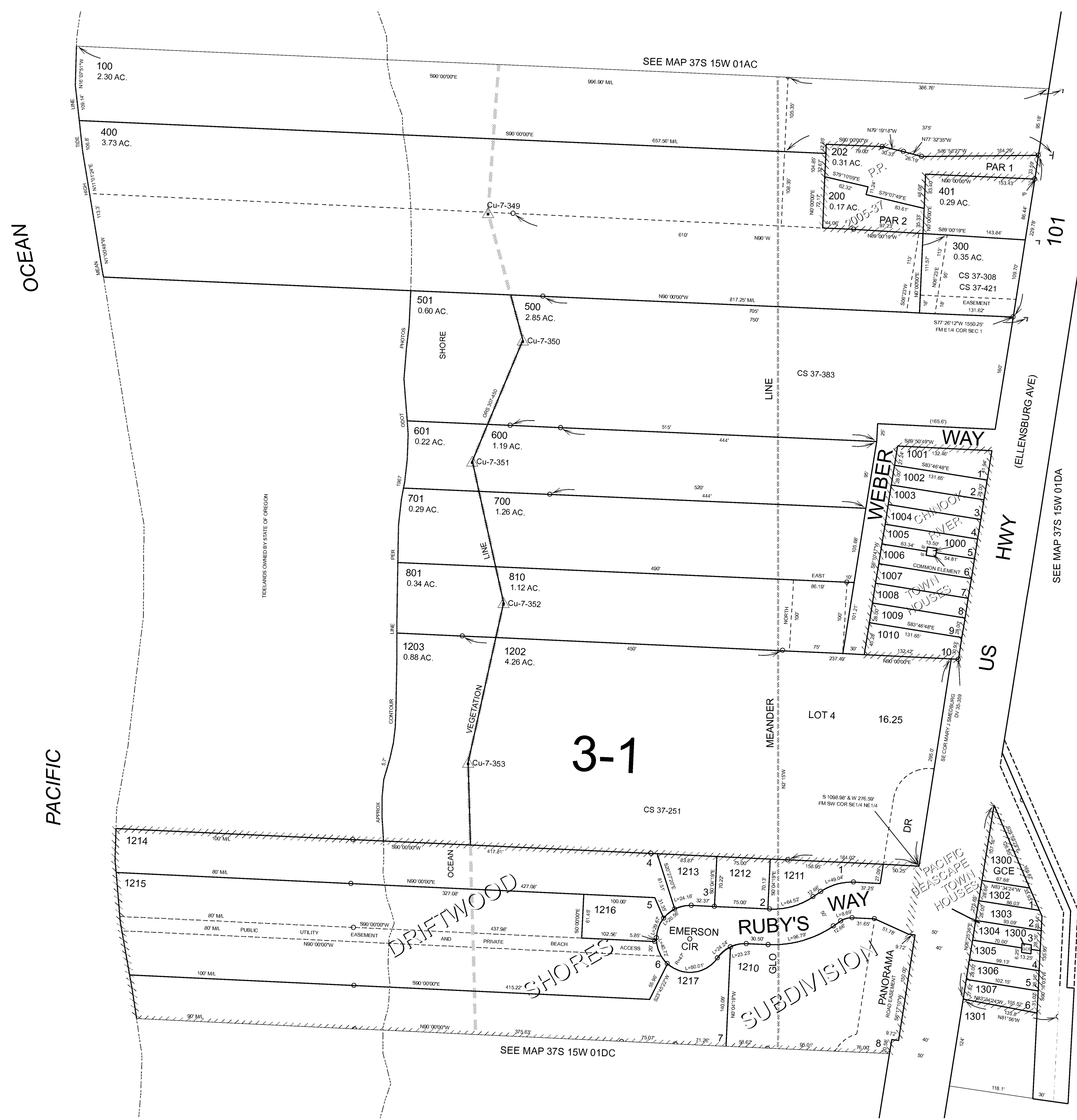
THIS MAP WAS PREPARED FOR ASSESSMENT PURPOSE ONLY



NW1/4 SE1/4 SECTION 01 T.37S. R.15W. W.M. CURRY COUNTY 1" = 100'

37S 15W 01DB GOLD BEACH

- CANCELLED NO.
- 101
- 102
- 201
- 402
- 800
- 900
- 1100
- 1200
- 1201
- 1204 THRU 1209
- 90000 THRU 90215



1/16 COR.

SEE MAP 37S 15W 01DA

1/16 COR.

Revised RAA 3/21/2007

37S 15W 01DB GOLD BEACH

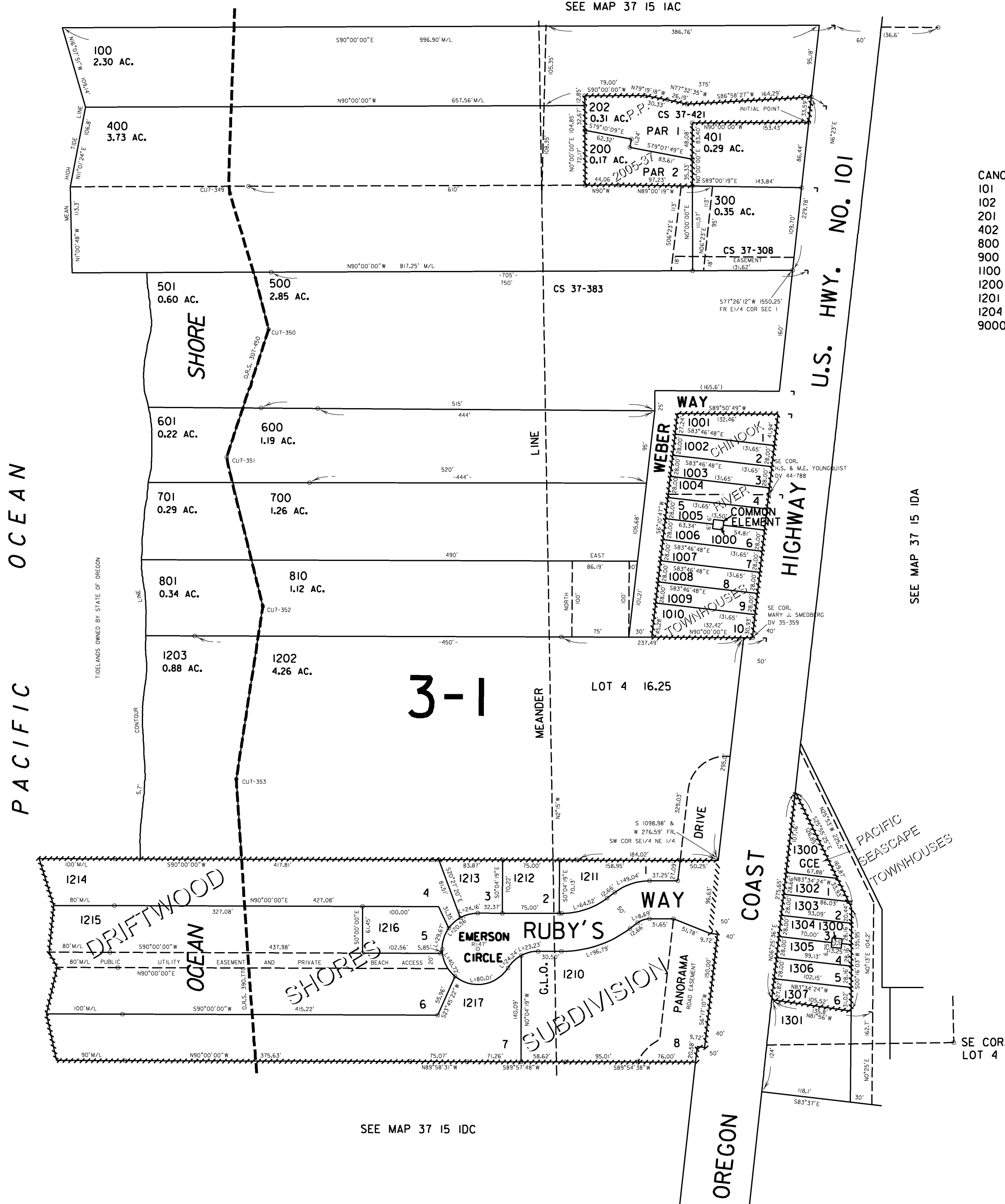
THIS MAP WAS PREPARED FOR ASSESSMENT PURPOSE ONLY

NW1/4 SE1/4 SEC. 1 T.37S. R.15W. W.M. CURRY COUNTY

37 15 IDB GOLD BEACH

1" = 100'

SEE MAP 37 15 IAC



CANCELLED NO.'S
 101
 102
 201
 402
 800
 900
 1100
 1200
 1201
 1204 THRU 1209
 90000 THRU 90215

SEE MAP 37 15 IDA

SEE MAP 37 15 IDC

Revised 9/25/2006, RAA

37 15 IDB GOLD BEACH

\$TIMES

\$DAYS

\$FILE\$

\$USERNAME\$

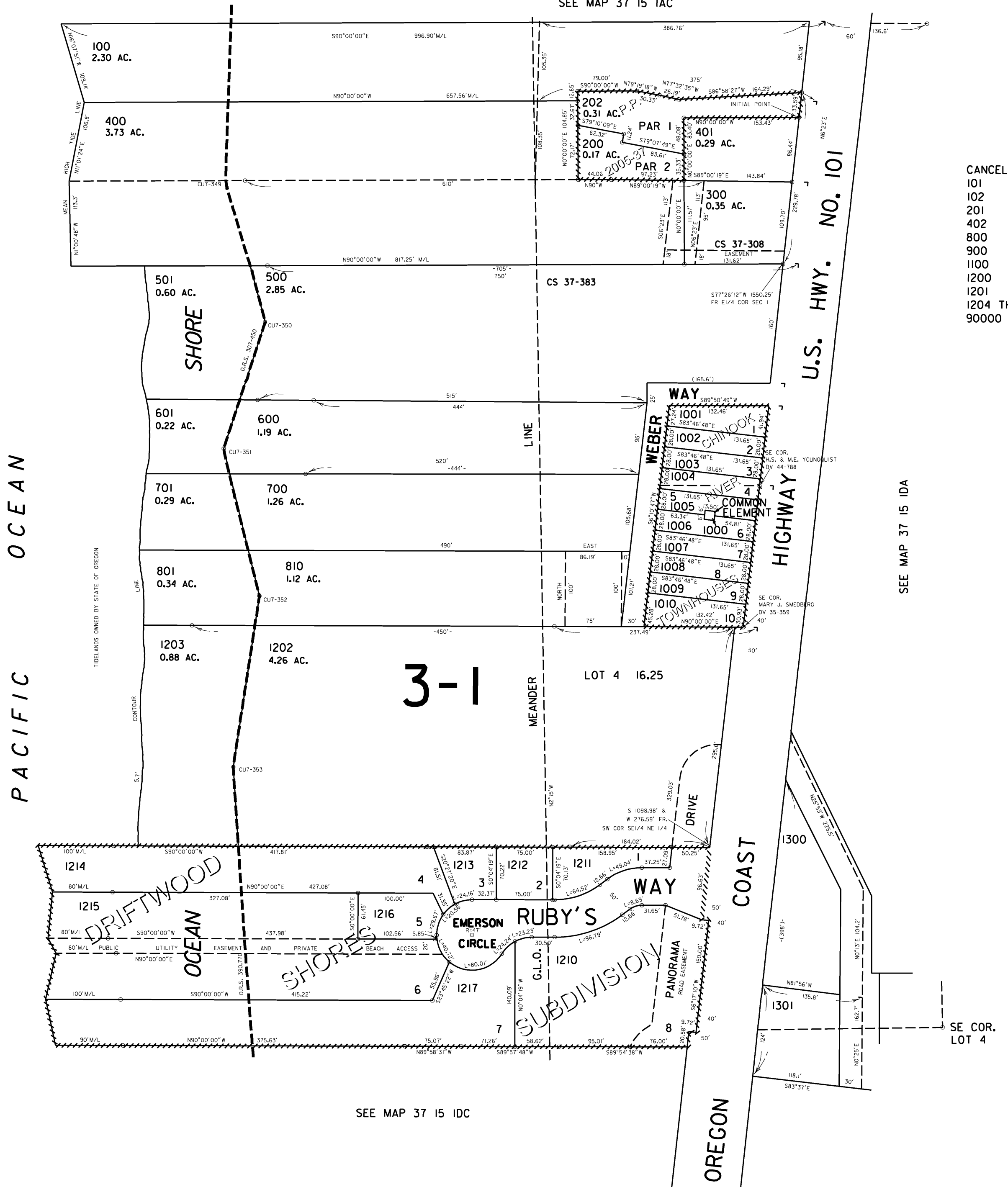
THIS MAP WAS PREPARED FOR
ASSESSMENT PURPOSE ONLY

NW1/4 SE1/4 SEC. 1 T.37S. R.15W. W.M. CURRY COUNTY

37 15 IDB
GOLD BEACH

1" = 100'

SEE MAP 37 15 IAC



CANCELLED NO.'S
 101
 102
 201
 402
 800
 900
 1100
 1200
 1201
 1204 THRU 1209
 90000 THRU 90215

SEE MAP 37 15 IDA

SEE MAP 37 15 IDC

Revised
2/7/2006, DBJ

37 15 IDB
GOLD BEACH

\$TIMES
\$DATES
\$FILE\$
\$USERNAME\$

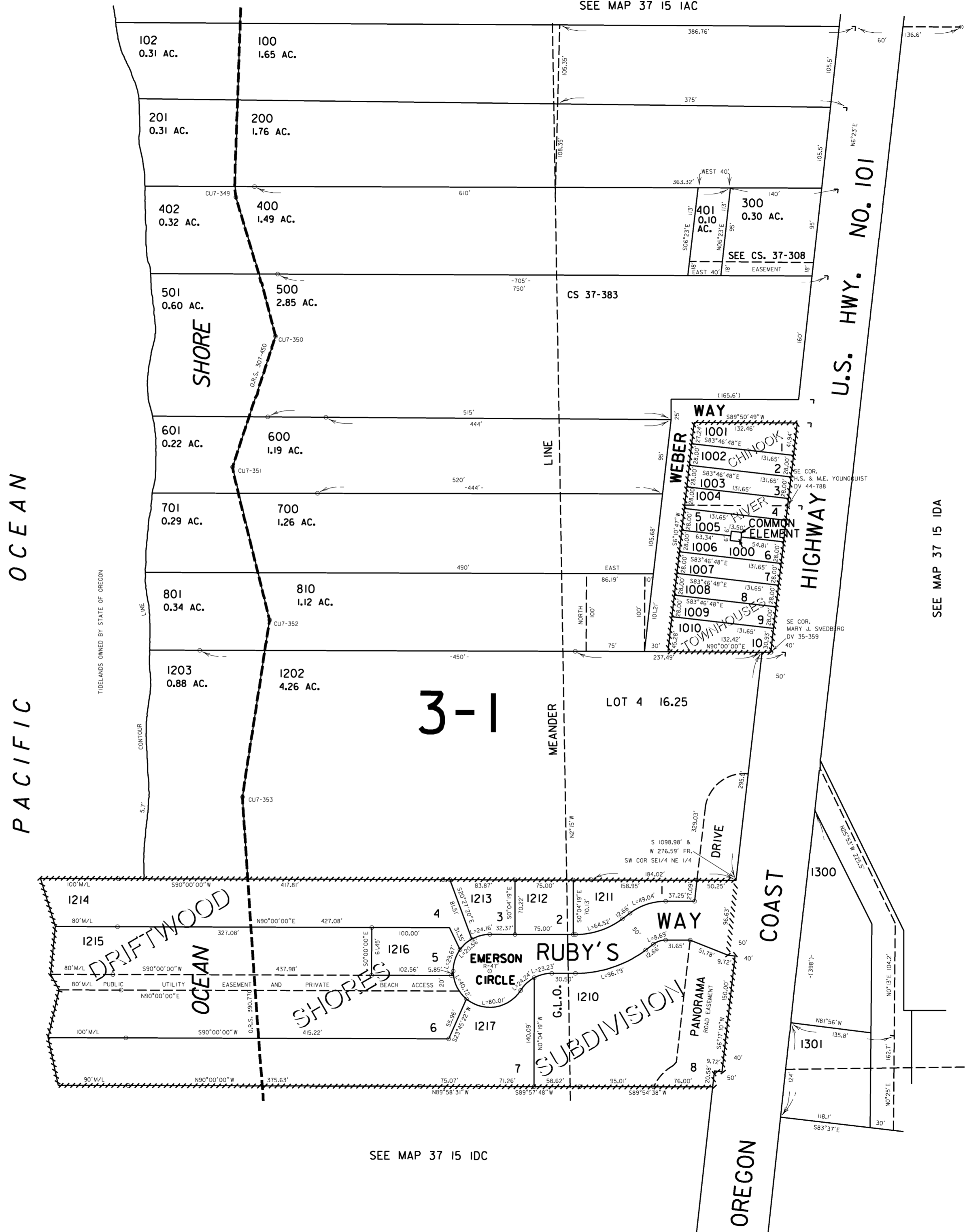
THIS MAP WAS PREPARED FOR
ASSESSMENT PURPOSE ONLY

NW1/4 SE1/4 SEC. 1 T.37S. R.15W. W.M. CURRY COUNTY

37 15 IDB GOLD BEACH

1" = 100'

SEE MAP 37 15 IAC



CANCELLED NO.'S
 101
 800
 900
 1100
 1200
 1201
 1204 THRU 1209
 90000 THRU 90215

SEE MAP 37 15 IDA

SEE MAP 37 15 IDC

Revised
11/21/2005, DBJ

37 15 IDB GOLD BEACH

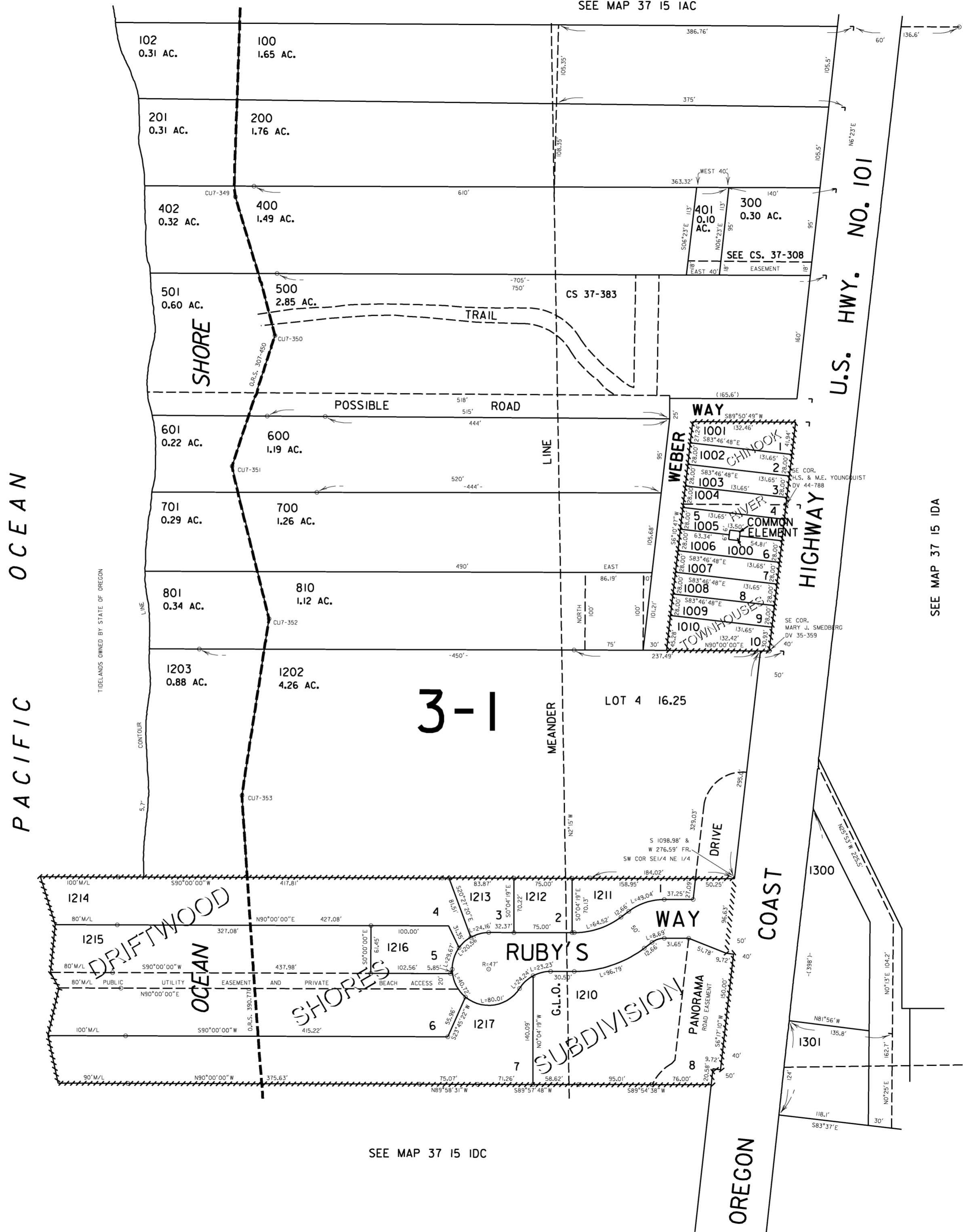
THIS MAP WAS PREPARED FOR
ASSESSMENT PURPOSE ONLY

NW1/4 SE1/4 SEC. 1 T.37S. R.15W. W.M.
CURRY COUNTY

37 15 IDB
GOLD BEACH

1" = 100'

SEE MAP 37 15 IAC



CANCELLED NO.'S
101
800
900
1100
1200
1201
1204 THRU 1209
90000 THRU 90215

SEE MAP 37 15 IDA

SEE MAP 37 15 IDC

Revised
8/10/2005, DBJ

37 15 IDB
GOLD BEACH