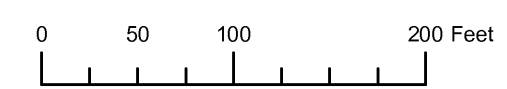


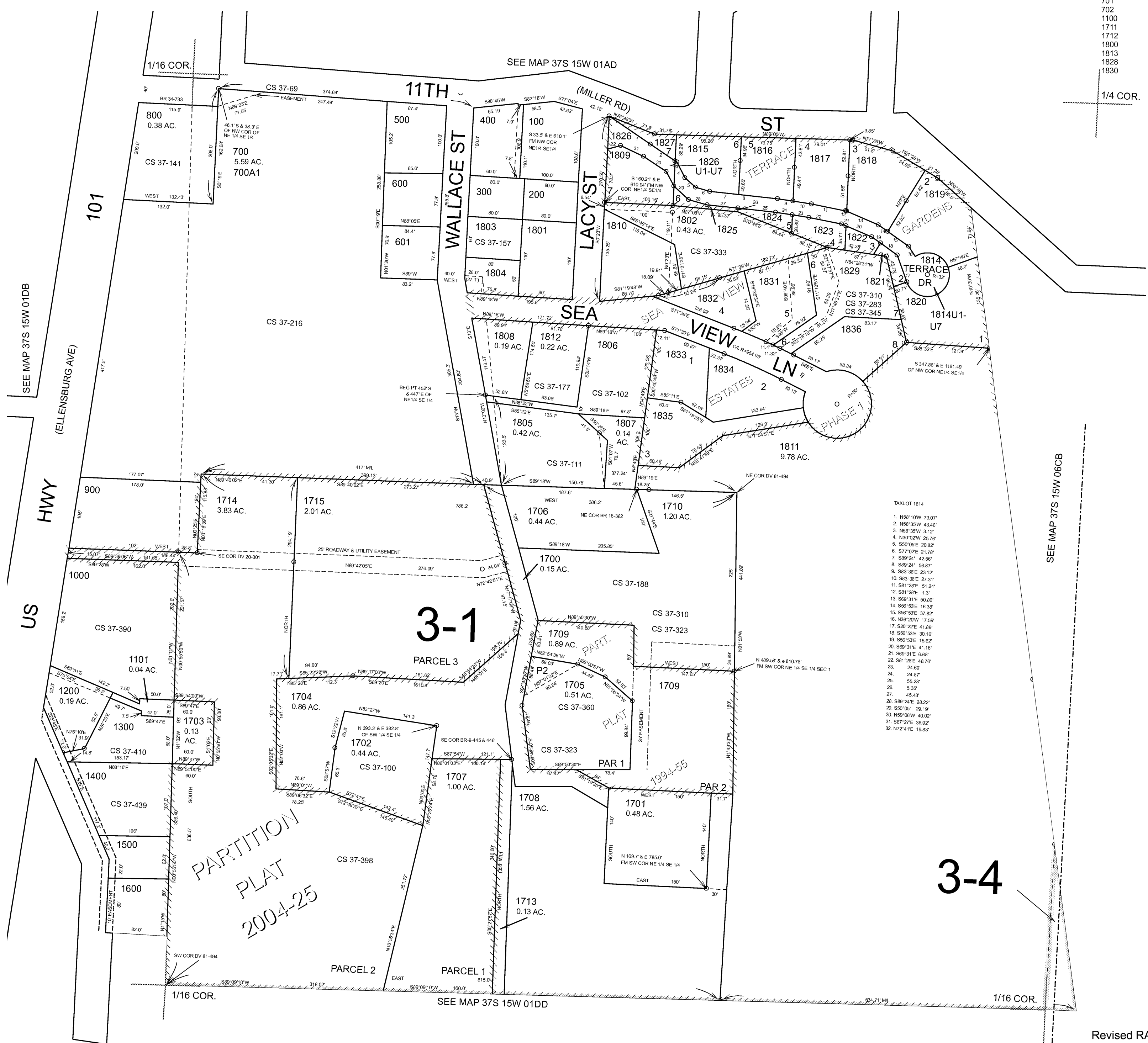
THIS MAP WAS PREPARED FOR ASSESSMENT PURPOSE ONLY



NE1/4 SE1/4 SECTION 01 T.37S. R.15W. W.M. CURRY COUNTY
1" = 100'

37S 15W 01DA
GOLD BEACH

- CANCELLED NO.
- 101
- 701
- 702
- 1100
- 1711
- 1712
- 1800
- 1813
- 1828
- 1830



SEE MAP 37S 15W 06CB

3-4

Revised RAA
3/7/2007

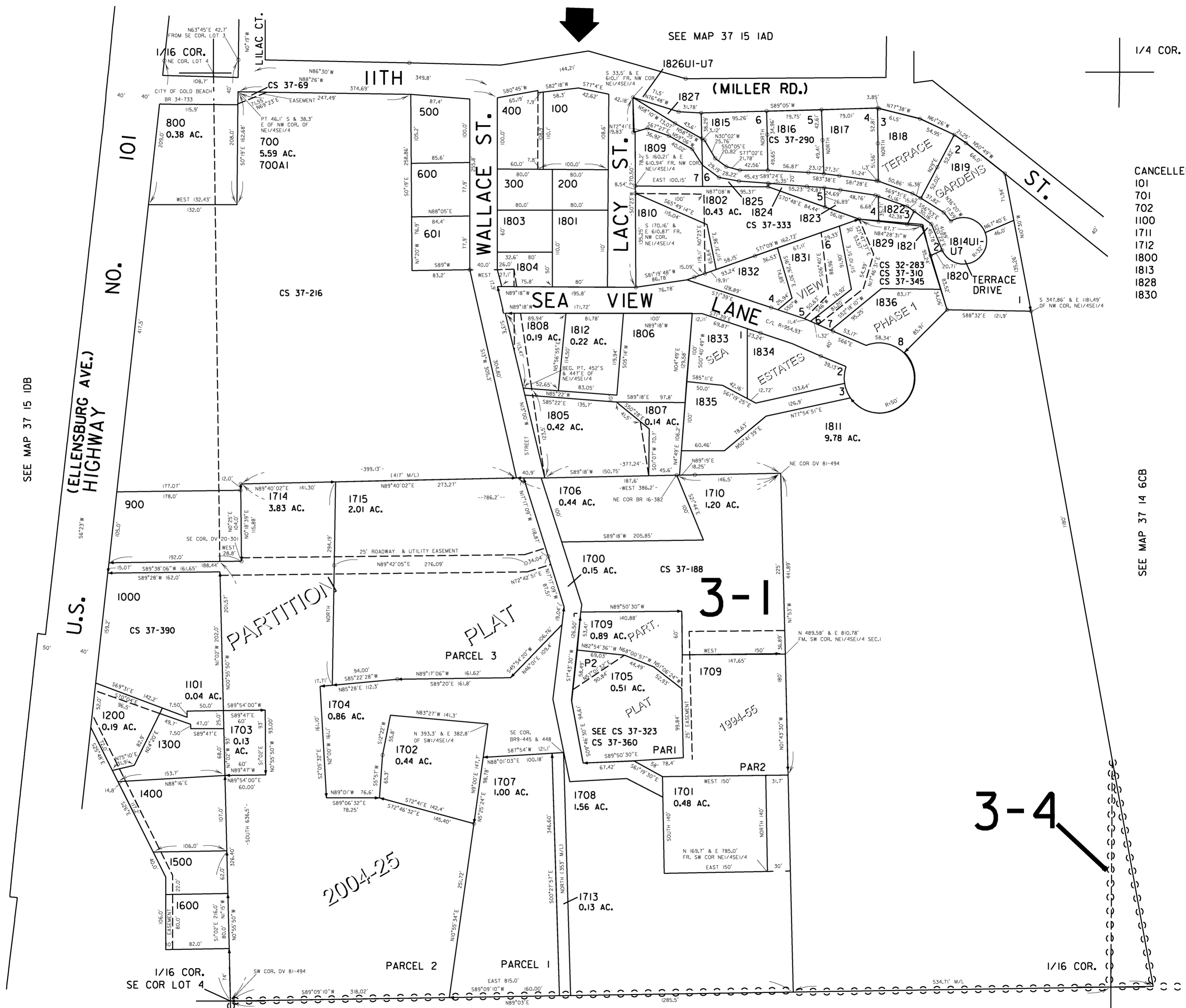
37S 15W 01DA
GOLD BEACH

THIS MAP WAS PREPARED FOR ASSESSMENT PURPOSE ONLY

NE1/4 SE1/4 SEC.1 T.37S. R.15W. W.M.
CURRY COUNTY

1" = 100'

37 15 IDA
GOLD BEACH



- CANCELLED NO.'S
- 101
 - 701
 - 702
 - 1100
 - 1711
 - 1712
 - 1800
 - 1813
 - 1828
 - 1830

Revised
6/7/2005, DBJ
37 15 IDA
GOLD BEACH