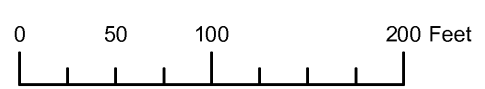


THIS MAP WAS PREPARED FOR ASSESSMENT PURPOSE ONLY



NE1/4 NE1/4 SECTION 01 T.37S. R.15W. W.M.
CURRY COUNTY
1" = 100'

37S 15W 01AA
GOLD BEACH

- CANCELLED NO.
- 400
- 802
- 803
- 804
- 1101
- 2900
- 3607
- 3609 THRU 3612
- 3614
- 4401
- 4500
- 4600
- 6100
- 6501
- 7500
- 7900



- TAX LOTS 100 101 102
- 1. N00°00'00"E 15.00'
- 2. N88°02'30"E 13.20'
- 3. N82°54'22"E 36.99'
- 4. N88°47'21"E 34.81'
- 5. S00°00'00"E 15.00'
- 6. N88°47'21"E 5.28'
- 7. S89°00'00"E 38.22'
- 8. S65°12'01"E 42.80'
- 9. S84°54'41"E 17.33'
- 10. S00°00'00"E 15'
- 11. S84°54'41"E 50.32'
- 12. S35°00'26"E 39.33'
- 13. S19°24'49"E 71.59'
- 14. S05°00'13"E 34.97'
- 15. S89°53'03"E 15.68'

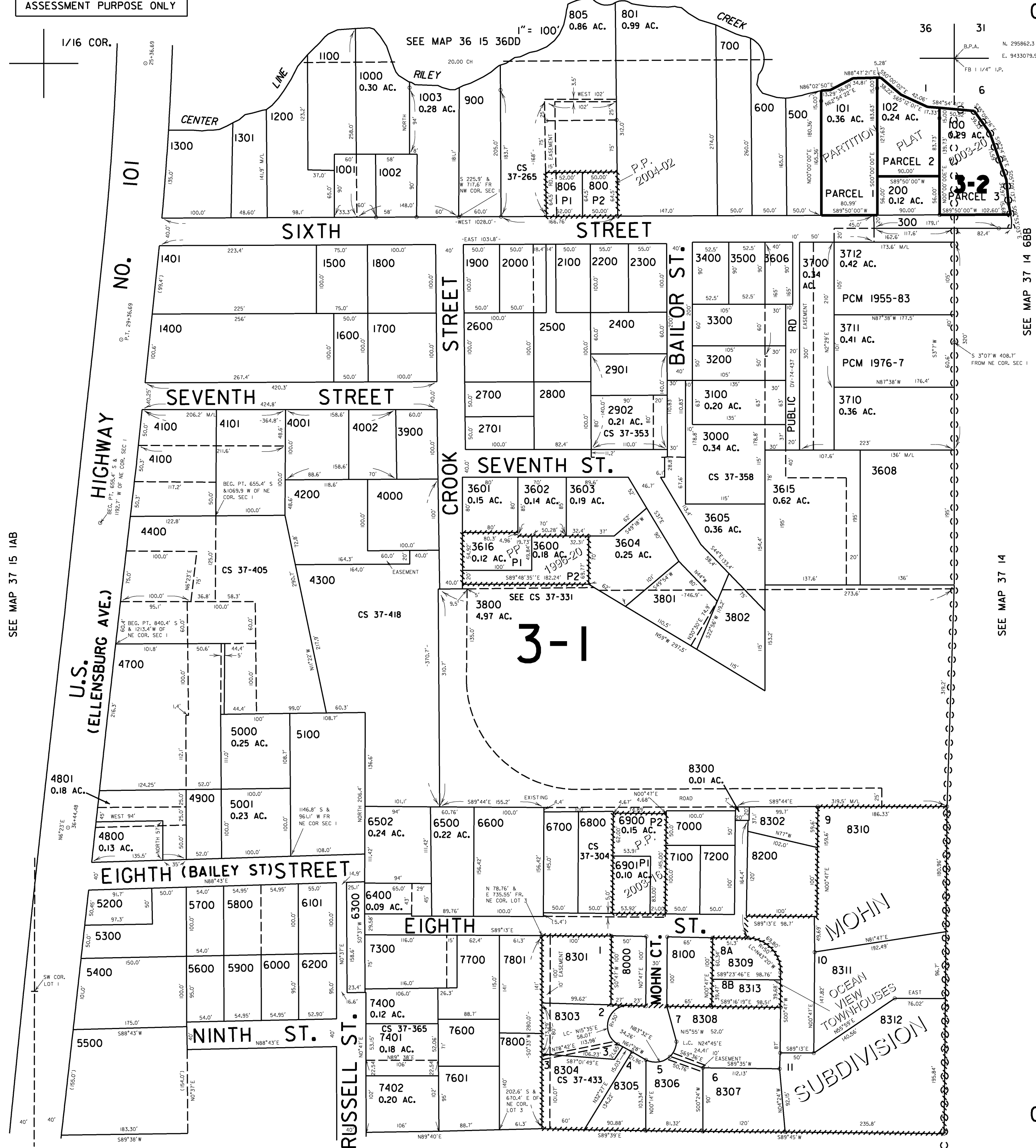
Revised RAA
3/7/2007
37S 15W 01AA
GOLD BEACH

\$TIMES
\$DATES
\$FILES
\$USERNAMES

THIS MAP WAS PREPARED FOR ASSESSMENT PURPOSE ONLY

NE1/4 NE1/4 SEC. 1 T.37S. R.15W. W.M. CURRY COUNTY

37 15 IAA GOLD BEACH



SEE MAP 37 15 IAB

SEE MAP 37 14

- CANCELLED NO.S
- 400
 - 802
 - 803
 - 804
 - 1101
 - 2900
 - 3607
 - 3609 THRU 3612
 - 3614
 - 4100AI
 - 4401
 - 4500
 - 4600
 - 6100
 - 6501
 - 7500
 - 7900

SEE MAP 37 14 6BB

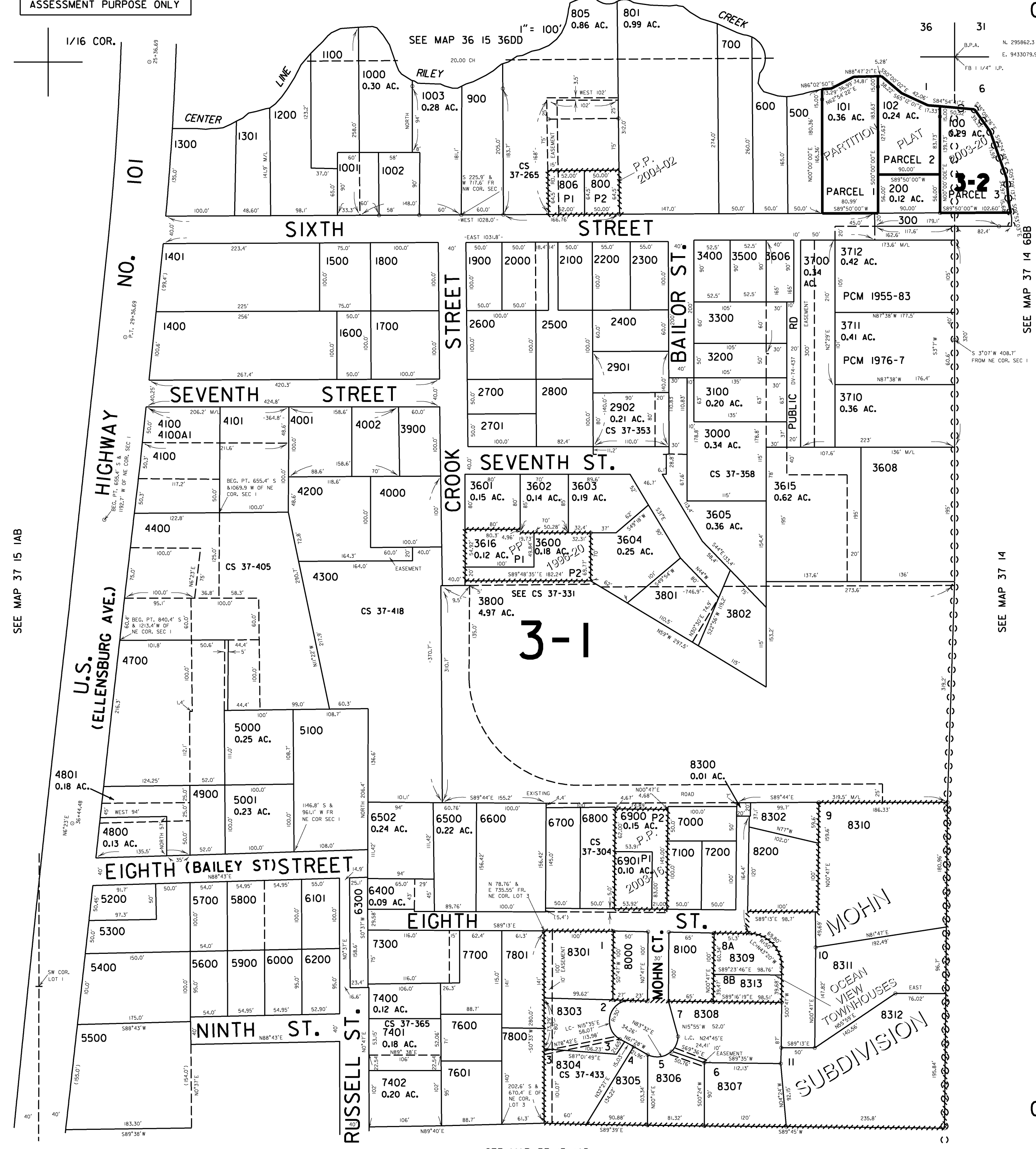
SEE MAP 37 15 IAD

Revised
1/29/2007, RAA
37 15 IAA
GOLD BEACH

THIS MAP WAS PREPARED FOR ASSESSMENT PURPOSE ONLY

NE1/4 NE1/4 SEC. 1 T.37S. R.15W. W.M. CURRY COUNTY

37 15 IAA GOLD BEACH



- CANCELLED NO.S
- 400
 - 802
 - 803
 - 804
 - 1101
 - 2900
 - 3607
 - 3609 THRU 3612
 - 3614
 - 4401
 - 4500
 - 4600
 - 6100
 - 6501
 - 7500
 - 7900

SEE MAP 37 14 6BB

SEE MAP 37 14

SEE MAP 37 15 IAB

SEE MAP 37 15 IAD

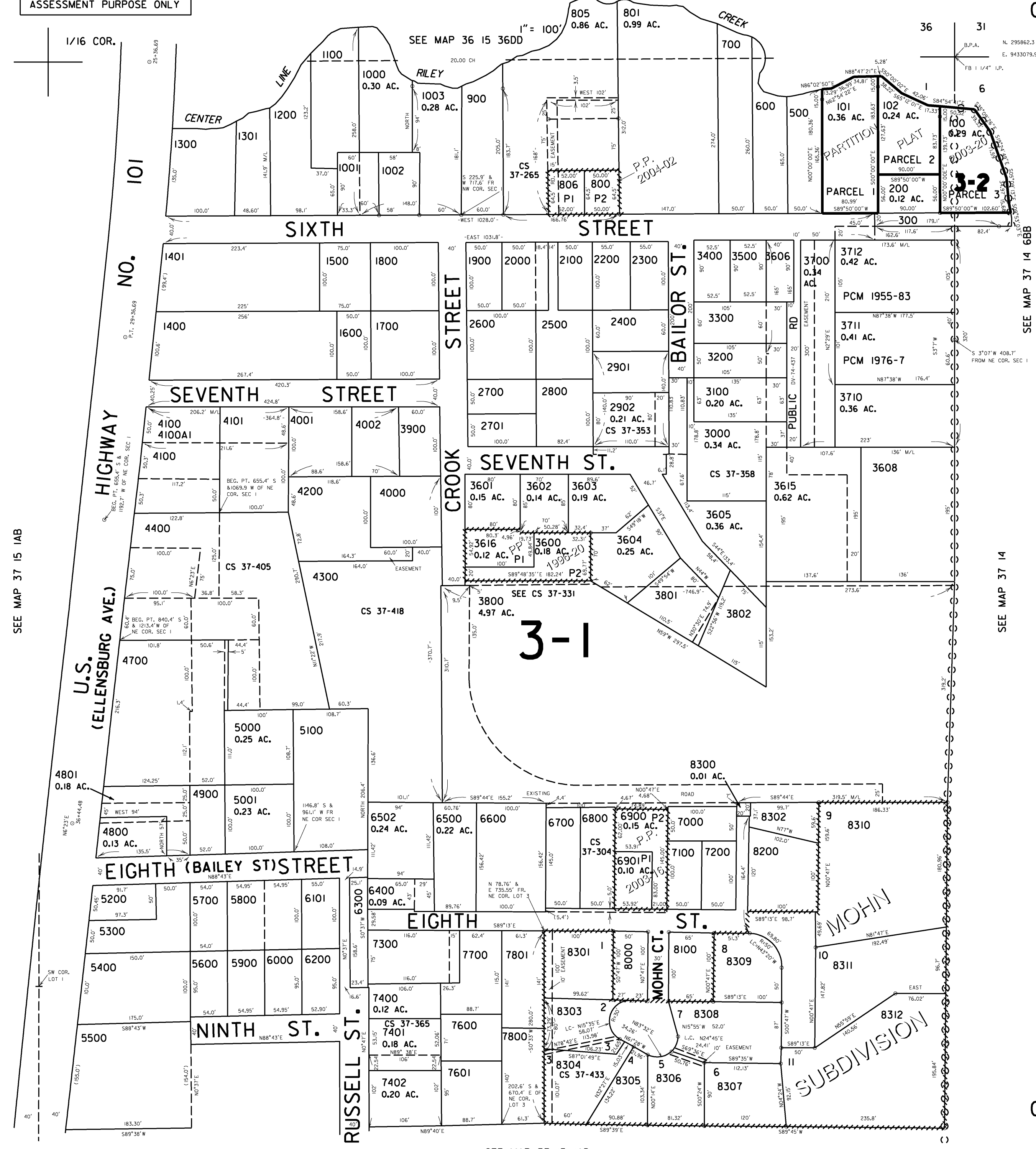
Revised
12/13/2006, RAA
37 15 IAA
GOLD BEACH

\$FILES\$
\$DATES\$
\$USERNAMES\$

THIS MAP WAS PREPARED FOR ASSESSMENT PURPOSE ONLY

NE1/4 NE1/4 SEC. 1 T.37S. R.15W. W.M. CURRY COUNTY

37 15 IAA GOLD BEACH



- CANCELLED NO.S
- 400
 - 802
 - 803
 - 804
 - 1101
 - 2900
 - 3607
 - 3609 THRU 3612
 - 3614
 - 4401
 - 4500
 - 4600
 - 6100
 - 6501
 - 7500
 - 7900

SEE MAP 37 14 6BB

SEE MAP 37 14

SEE MAP 37 15 IAD

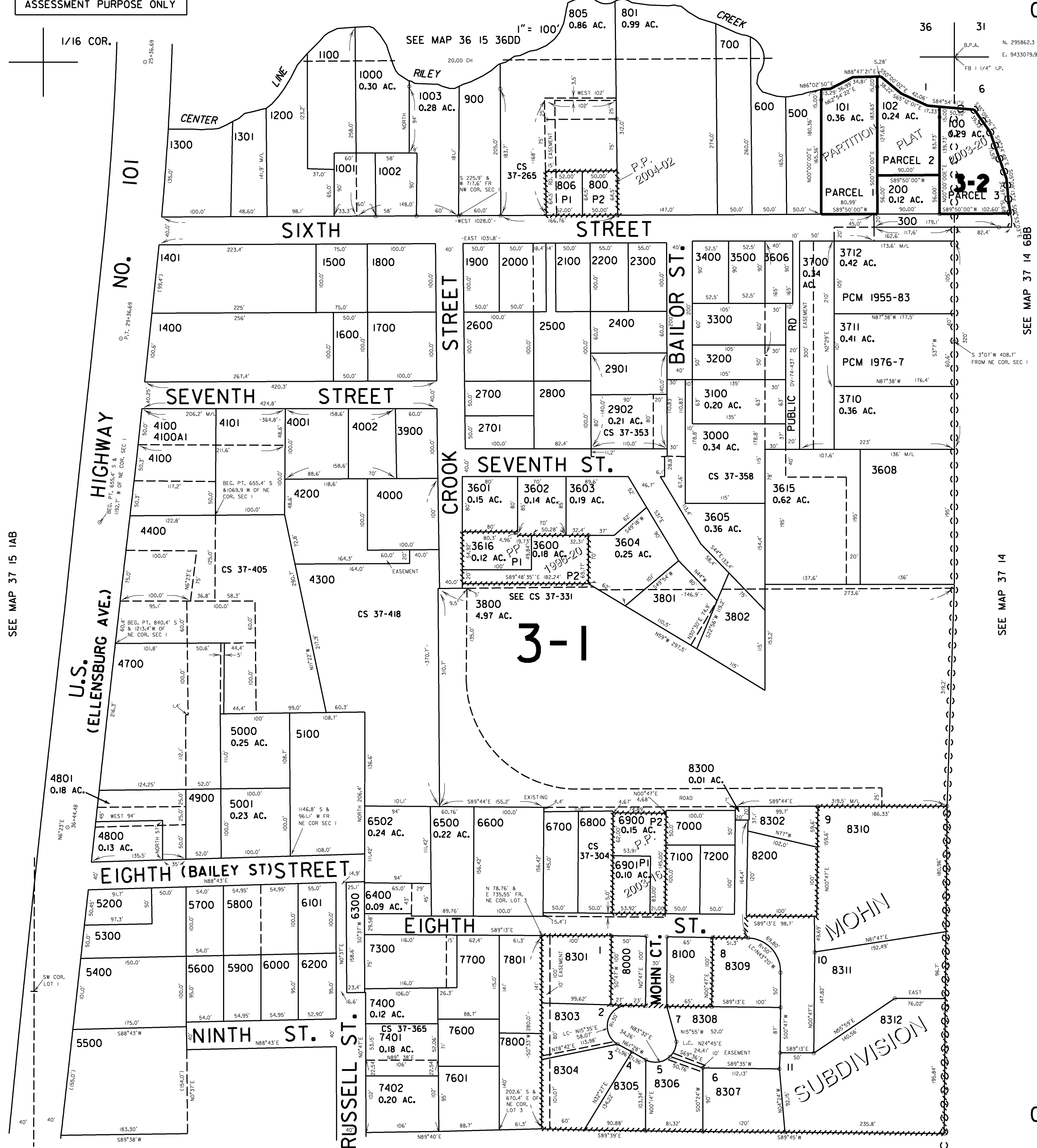
Revised
10/26/2006, RAA
37 15 IAA
GOLD BEACH

\$FILES\$
\$DATES\$
\$USERNAMES\$

THIS MAP WAS PREPARED FOR ASSESSMENT PURPOSE ONLY

NE1/4 NE1/4 SEC. 1 T.37S. R.15W. W.M. CURRY COUNTY

37 15 IAA GOLD BEACH



CANCELLED NO.S
 400
 802
 803
 804
 1101
 2900
 3607
 3609 THRU 3612
 3614
 4401
 4500
 4600
 6100
 6501
 7500
 7900

SEE MAP 37 14 6BB

SEE MAP 37 14

SEE MAP 37 15 IAB

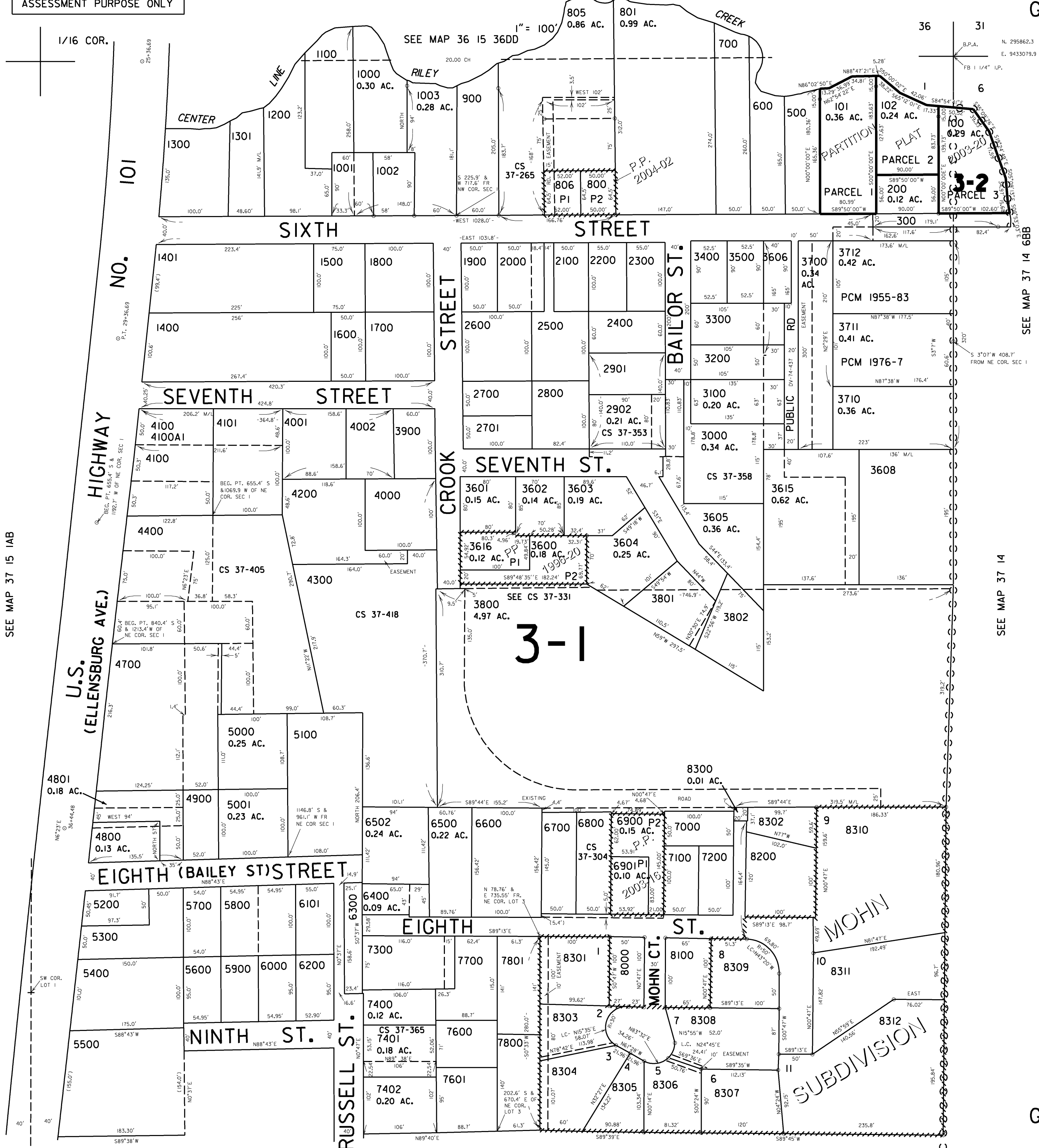
Revised
 7/24/2006, RAA
 37 15 IAA
 GOLD BEACH

\$TIMES
 \$DATES
 \$FILES
 \$USERNAMES

NE1/4 NE1/4 SEC. 1 T.37S. R.15W. W.M.
CURRY COUNTY

37 15 IAA
GOLD BEACH

THIS MAP WAS PREPARED FOR
ASSESSMENT PURPOSE ONLY



- CANCELLED NO.S
400
802
803
804
1101
2900
3607
3609 THRU 3612
3614
4401
4500
4600
6100
6501
7500
7900

SEE MAP 37 15 IAB

SEE MAP 37 14

SEE MAP 37 14 68B

SEE MAP 37 15 IAD

Revised
6/27/2005, DBJ
37 15 IAA
GOLD BEACH