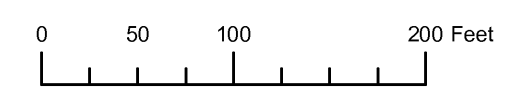


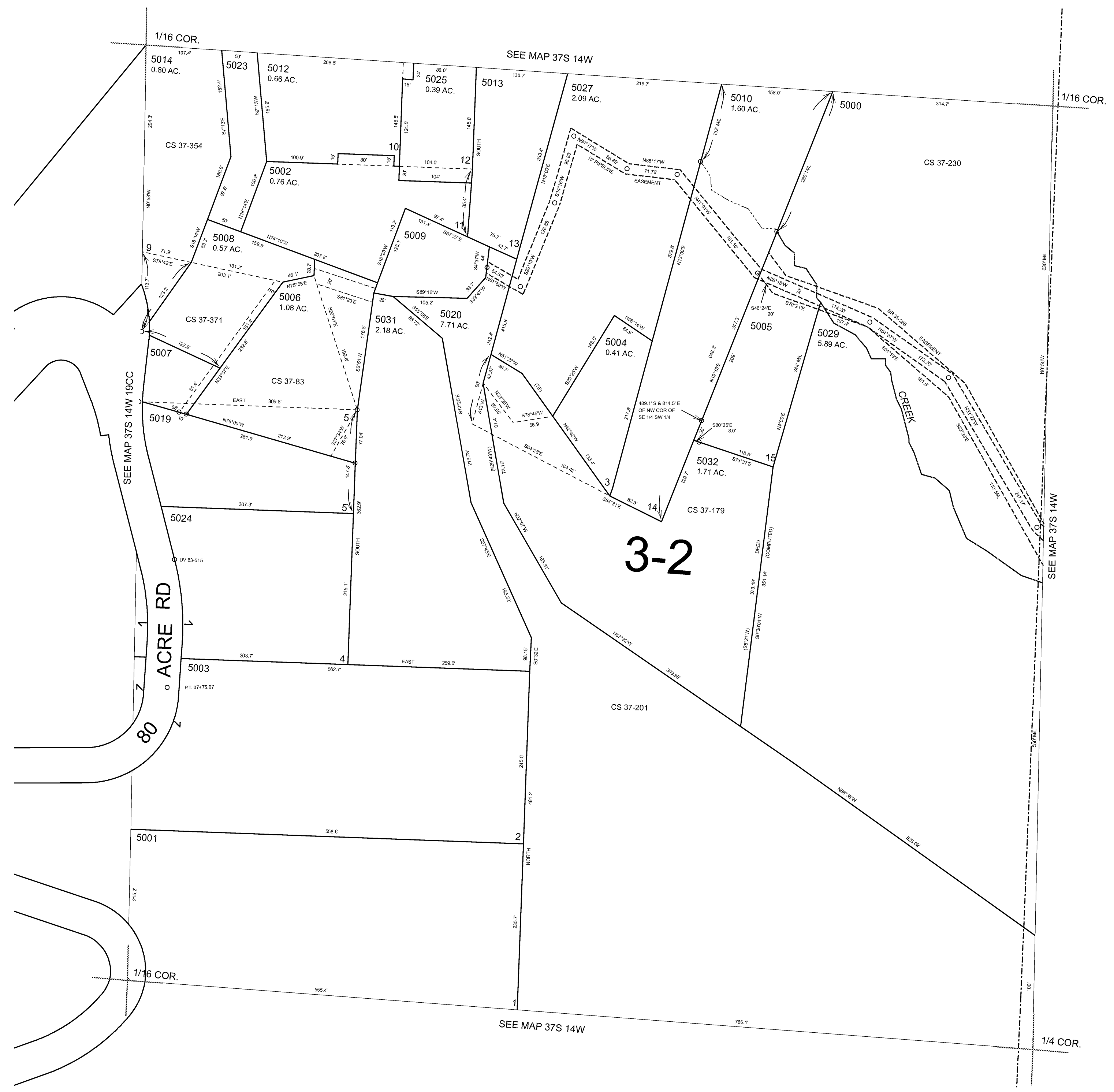
THIS MAP WAS PREPARED FOR ASSESSMENT PURPOSE ONLY



SE1/4 SW1/4 SECTION 19 T.37S. R.14W. W.M. CURRY COUNTY  
1" = 100'

37S 14W 19CD

- CANCELLED NO.
- 5011
- 5015
- 5016
- 5017
- 5018
- 5021
- 5022
- 5026
- 5028
- 5030
- 5033



Revised RAA  
3/5/2007

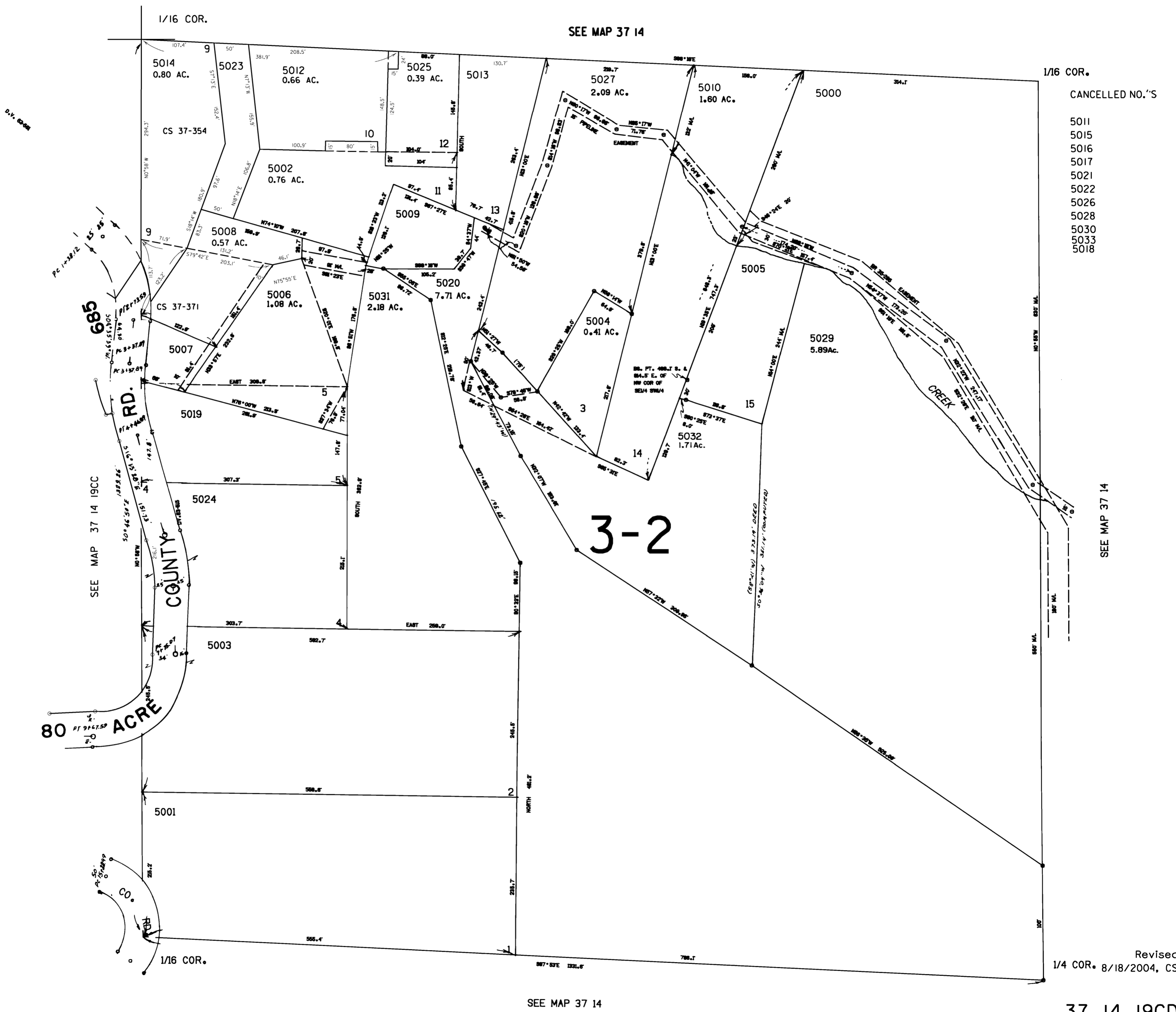
37S 14W 19CD

THIS MAP WAS PREPARED FOR  
ASSESSMENT PURPOSE ONLY

# SE1/4 SW1/4 SEC. 19 T.37S. R.14W. WM. CURRY COUNTY

37 14 19CD

1" = 100'



- CANCELLED NO.'S
- 5011
  - 5015
  - 5016
  - 5017
  - 5021
  - 5022
  - 5026
  - 5028
  - 5030
  - 5033
  - 5018

SEE MAP 37 14

SEE MAP 37 14

Revised  
1/4 COR. 8/18/2004, CS

37 14 19CD