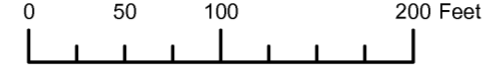
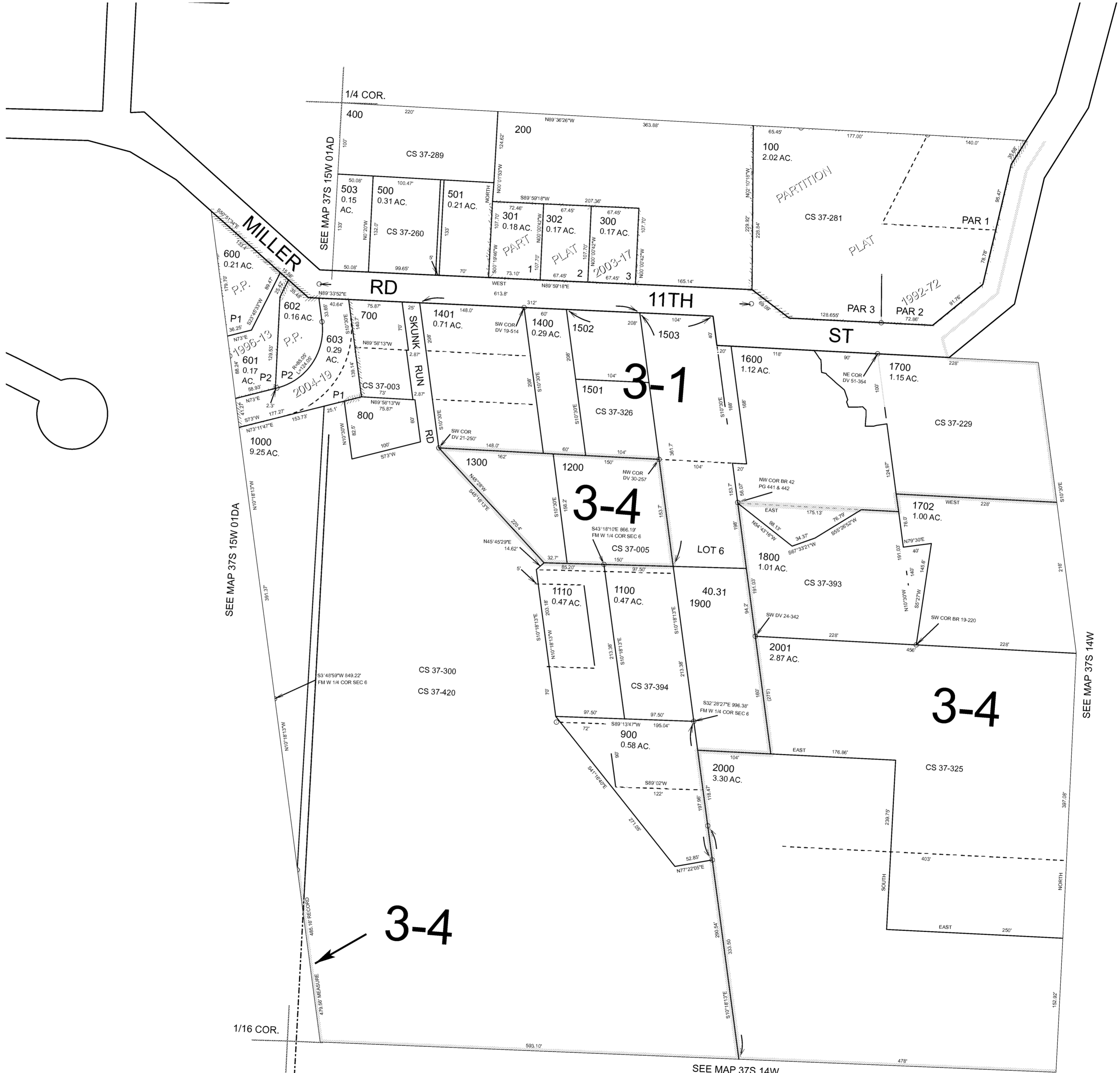


THIS MAP WAS PREPARED FOR ASSESSMENT PURPOSE ONLY



N.W.1/4 S.W.1/4 SEC.6 T.37S. R.14W. W.M. CURRY COUNTY 1" = 100'

- CANCELLED:
- 101
- 102
- 502
- 1500
- 1601
- 1701



1/16 COR.

1/16 COR.

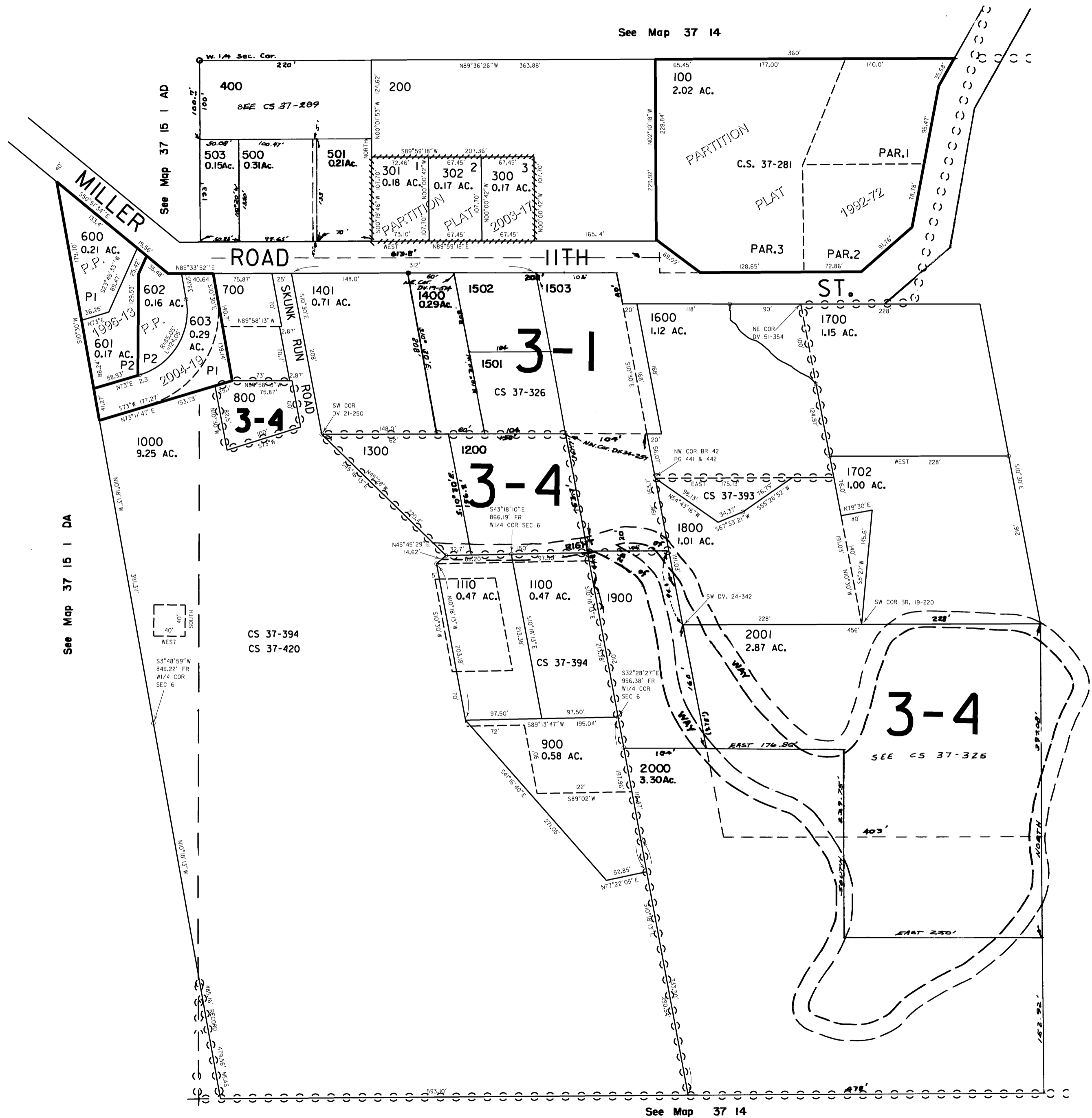
Revised RAA 5/13/2008

THIS MAP WAS PREPARED FOR  
ASSESSMENT PURPOSE ONLY

NW1/4 SW1/4 SEC 6 T37S R14W WM  
CURRY COUNTY

37 14 6CB

1" = 100'



CANCELLED NO.'S  
101  
102  
502  
1500  
1601  
1701

Revised  
7/7/2005, DBJ

37 14 6CB