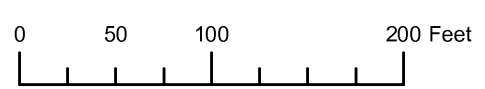
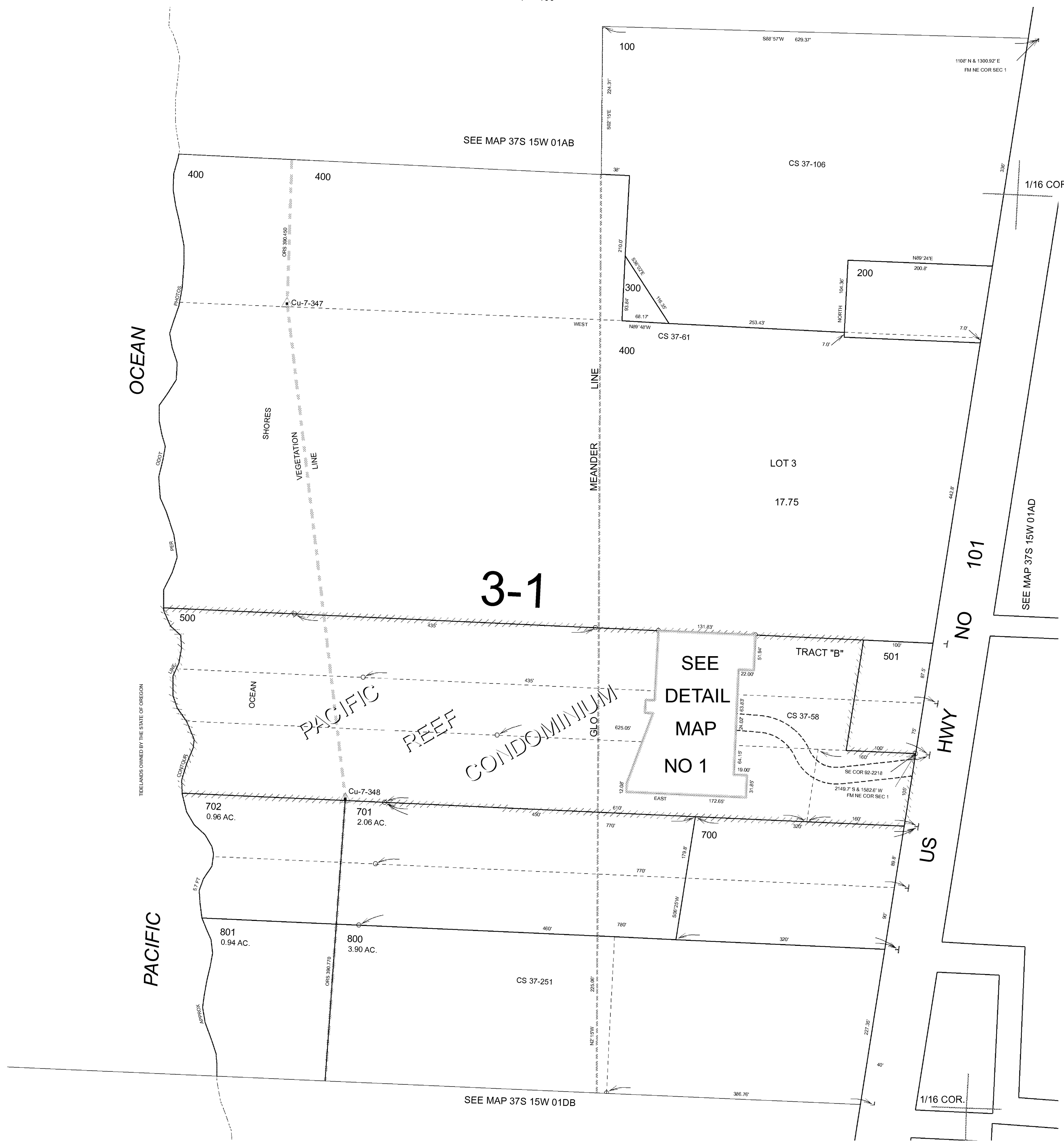


THIS MAP WAS PREPARED FOR ASSESSMENT PURPOSE ONLY



SW1/4 NE1/4 SECTION 01 T.37S. R.15W. W.M.
CURRY COUNTY
1" = 100'

37S 15W 01AC
GOLD BEACH
CANCELLED NO.
502
600
601



3-1

SEE
DETAIL
MAP
NO 1

Revised RAA
3/7/2007
37S 15W 01AC
GOLD BEACH

THIS MAP WAS PREPARED FOR ASSESSMENT PURPOSE ONLY

SW1/4 NE1/4 SEC. 1 T.37S. R.15W. W.M. CURRY COUNTY

37 15 IAC GOLD BEACH

1" = 100'

SEE MAP 37 15 IAB

NE COR. SEC. 1 LIES N 1108' AND E 1300.92'

PACIFIC OCEAN SHORE LINE

TIDELANDS OWNED BY STATE OF OREGON

3-1

SEE DETAIL MAP NO. 1

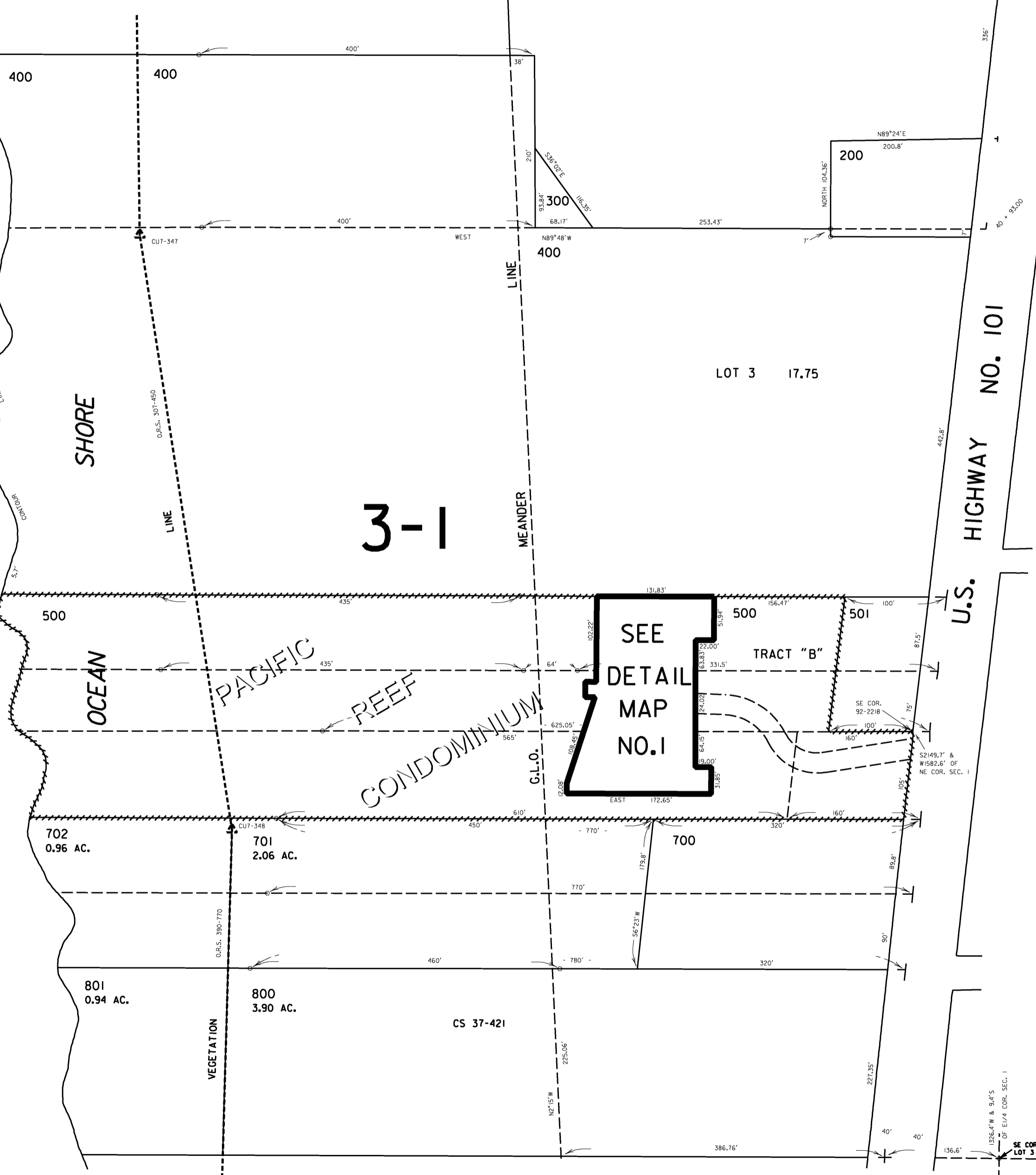
LOT 3 17.75

U.S. HIGHWAY NO. 101

CANCELLED NO.'S

502
600
601

SEE MAP 37 15 IAD



SEE MAP 37 15 IDB

Revised
12/14/2006, RAA
37 15 IAC
GOLD BEACH

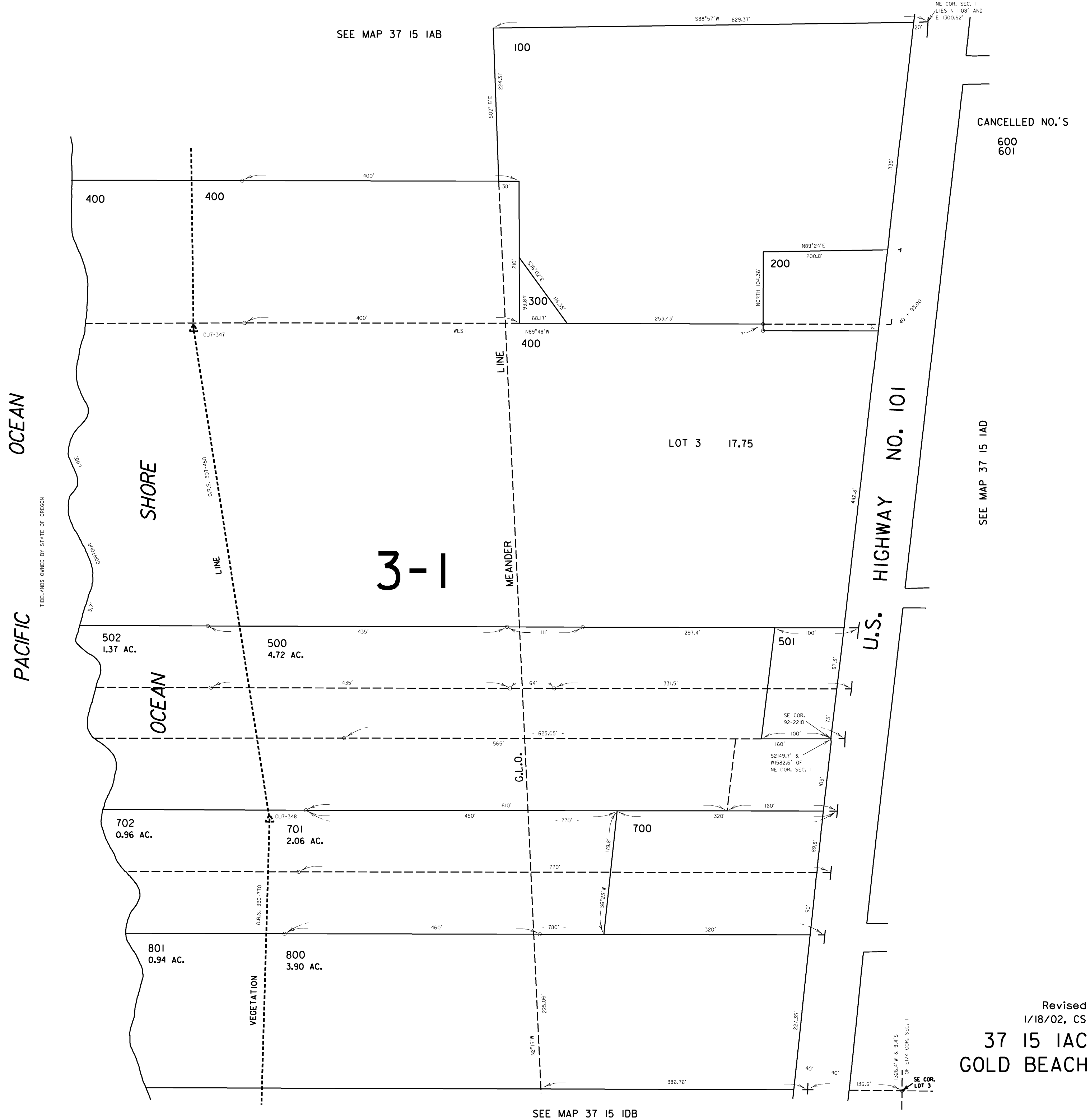
\$TIMES
\$DATES
\$FILE\$
\$USERNAME\$

THIS MAP WAS PREPARED FOR
ASSESSMENT PURPOSE ONLY

SW1/4 NE1/4 SEC. 1 T.37S. R.15W. W.M.
CURRY COUNTY

1" = 100'

37 15 IAC
GOLD BEACH



SEE MAP 37 15 IDB

Revised
1/18/02, CS
37 15 IAC
GOLD BEACH