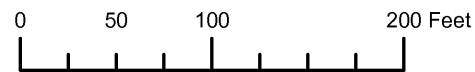


THIS MAP WAS PREPARED FOR ASSESSMENT PURPOSE ONLY

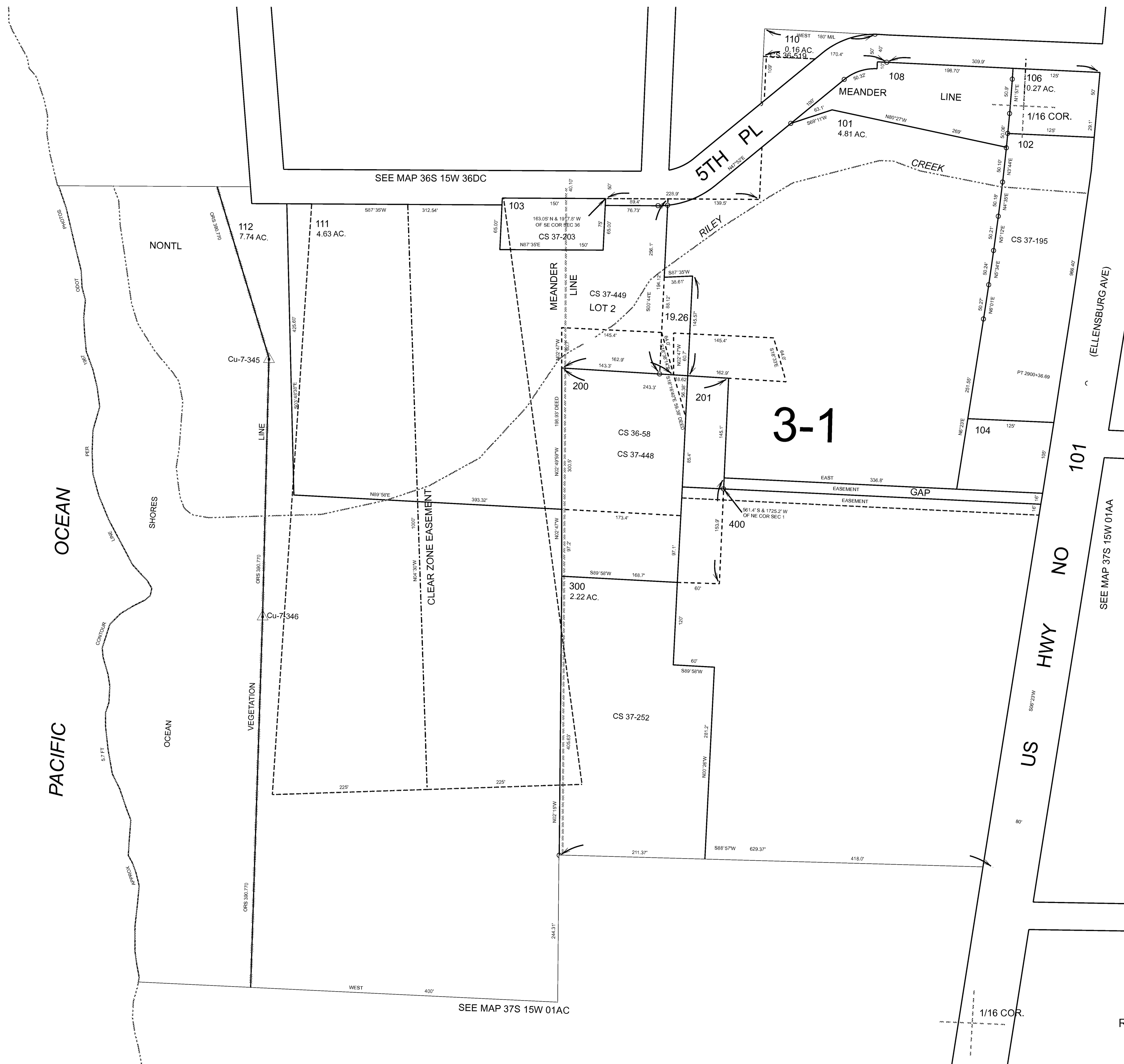


N.W. 1/4 N.E. 1/4 SEC. 1 T.37S. R.15W. W.M. CURRY COUNTY

1" = 100'

37S15W01AB GOLD BEACH

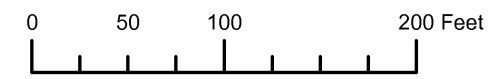
- CANCELLED:
- 100
- 100A1
- 105
- 105A5
- 106A1
- 107
- 109
- 202
- 300A1
- 1011



Revised: RAA 5/13/2009

GOLD BEACH 37S15W01AB

THIS MAP WAS PREPARED FOR ASSESSMENT PURPOSE ONLY

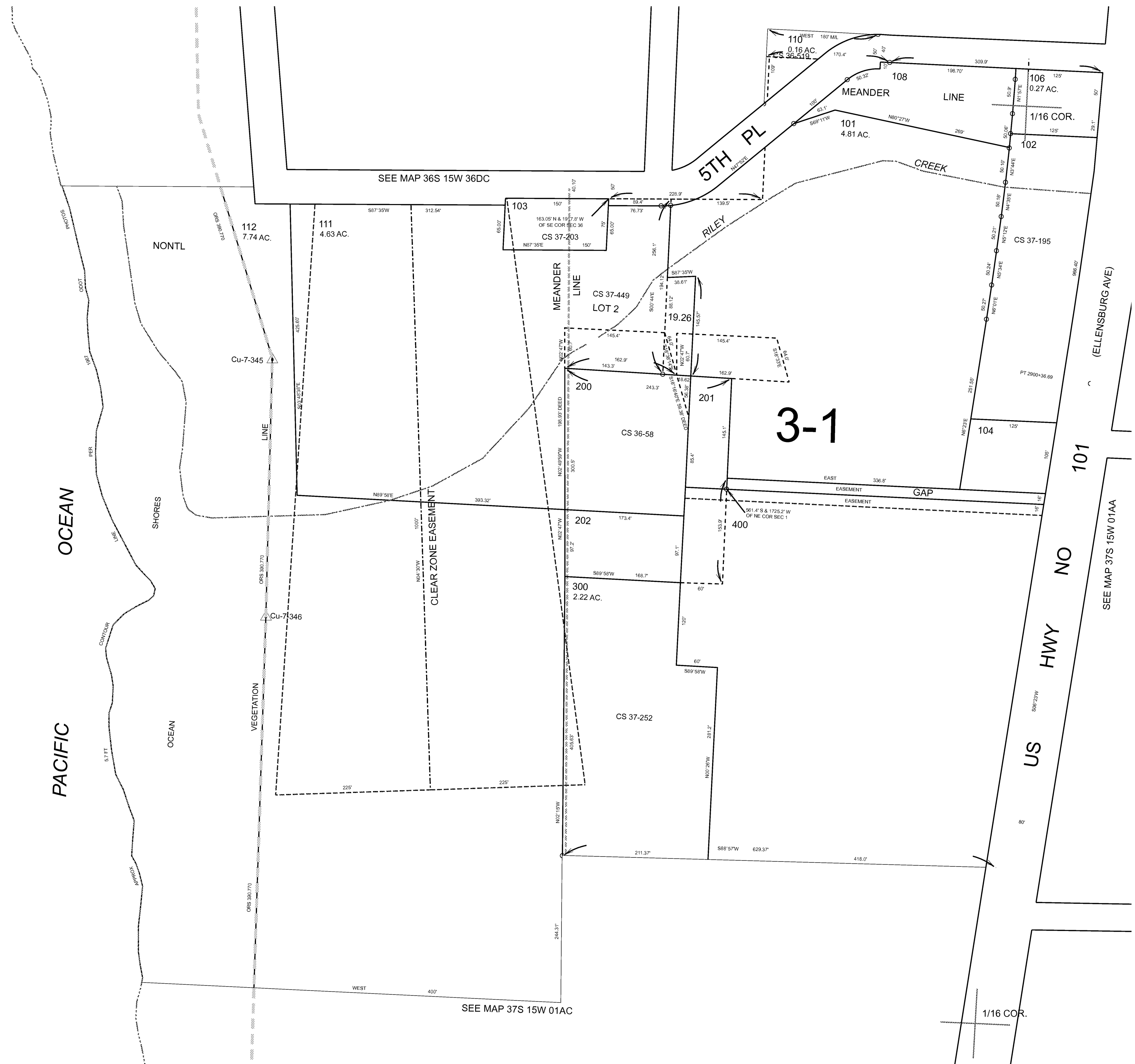


N.W. 1/4 N.E. 1/4 SEC. 1 T.37S. R.15W. W.M. CURRY COUNTY

1" = 100'

37S15W01AB GOLD BEACH

- CANCELLED:
- 100
- 100A1
- 105
- 105A5
- 106A1
- 107
- 109
- 300A1
- 1011



Revised: 1/22/2009

GOLD BEACH 37S15W01AB

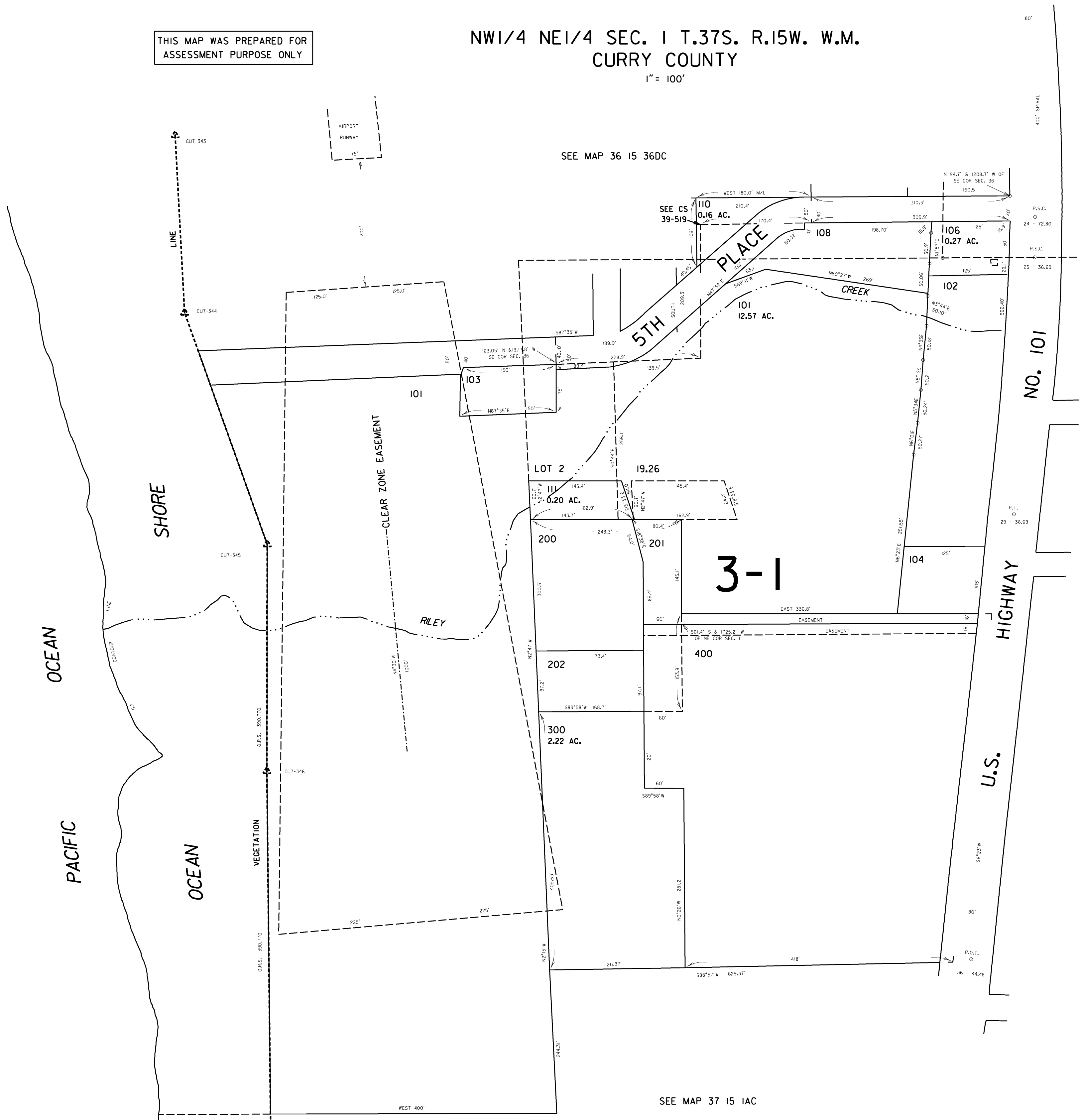
THIS MAP WAS PREPARED FOR
ASSESSMENT PURPOSE ONLY

NW1/4 NE1/4 SEC. 1 T.37S. R.15W. W.M.
CURRY COUNTY

1" = 100'

37 15 IAB
GOLD BEACH

CANCELLED NO.
100A1
105A5
100
105
107
109
106A1
1011
300 AI



SEE MAP 36 15 36DC

SEE CS 39-519

NO. 101

3-1

SEE MAP 37 15 1AA

SEE MAP 37 15 IAC

37 15 IAB
GOLD BEACH

Revised 1/5/01, SD