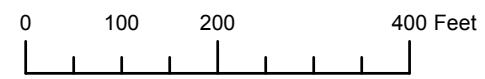


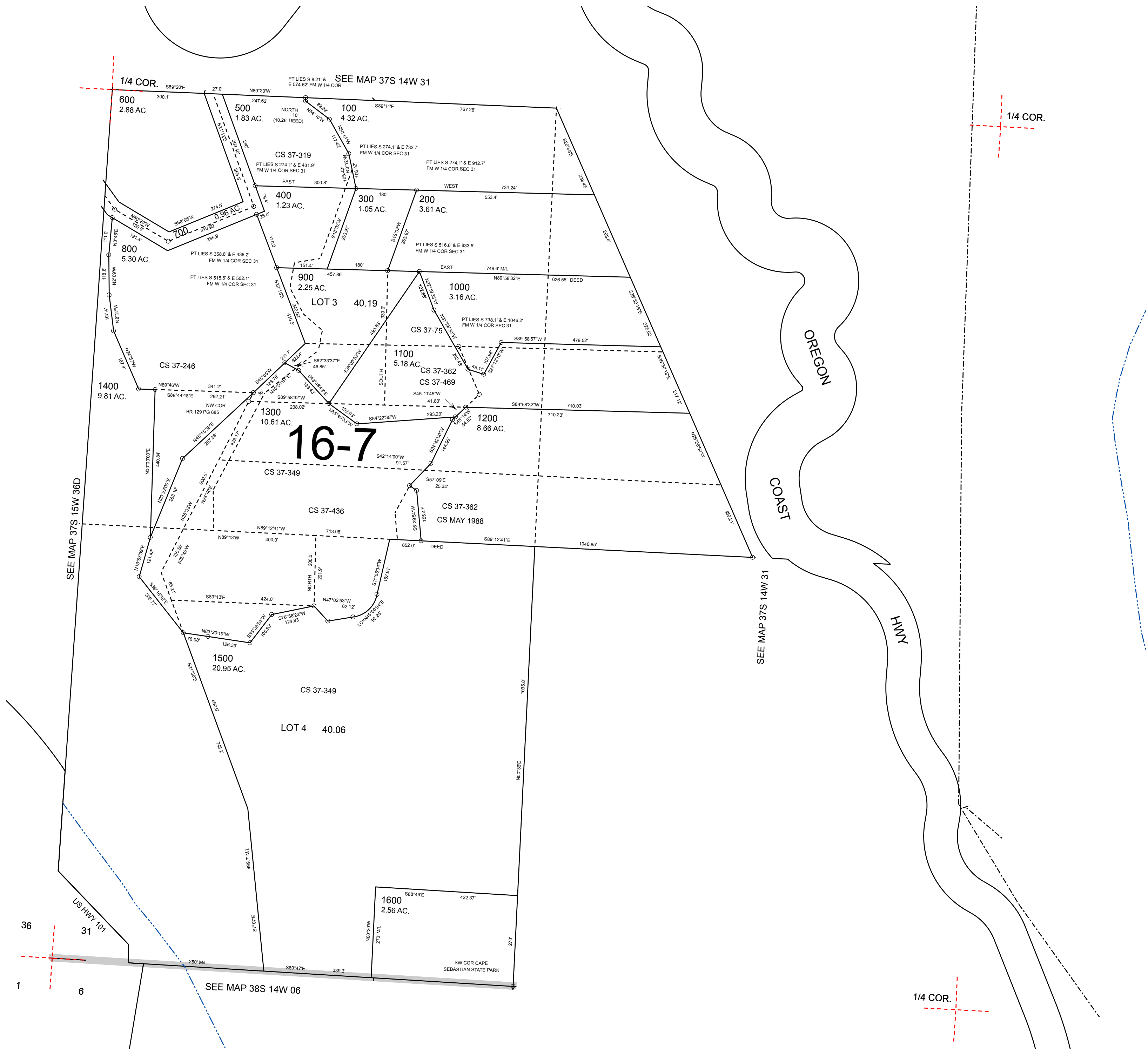
THIS MAP WAS PREPARED FOR ASSESSMENT PURPOSE ONLY



S.W.1/4 SEC.31 T.37S. R.14W. W.M. CURRY COUNTY 1" = 200'

37S14W31C

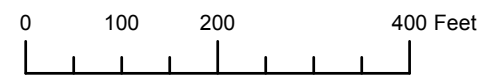
CANCELLED:



Revised: RAA 5/9/2011

37S14W31C

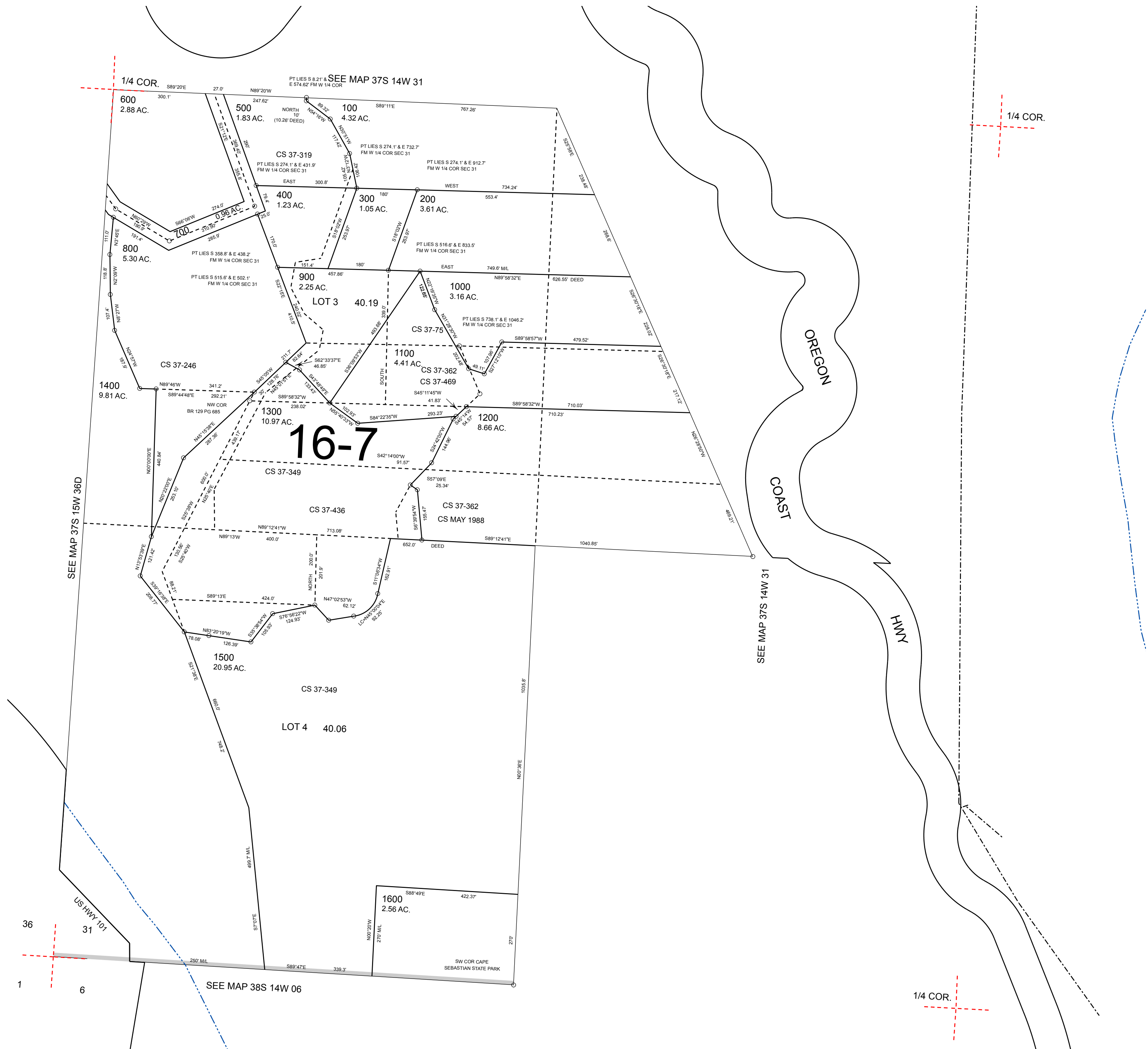
THIS MAP WAS PREPARED FOR ASSESSMENT PURPOSE ONLY



S.W.1/4 SEC.31 T.37S. R.14W. W.M. CURRY COUNTY 1" = 200'

37S14W31C

CANCELLED:



Revised: RAA 4/27/2011

37S14W31C

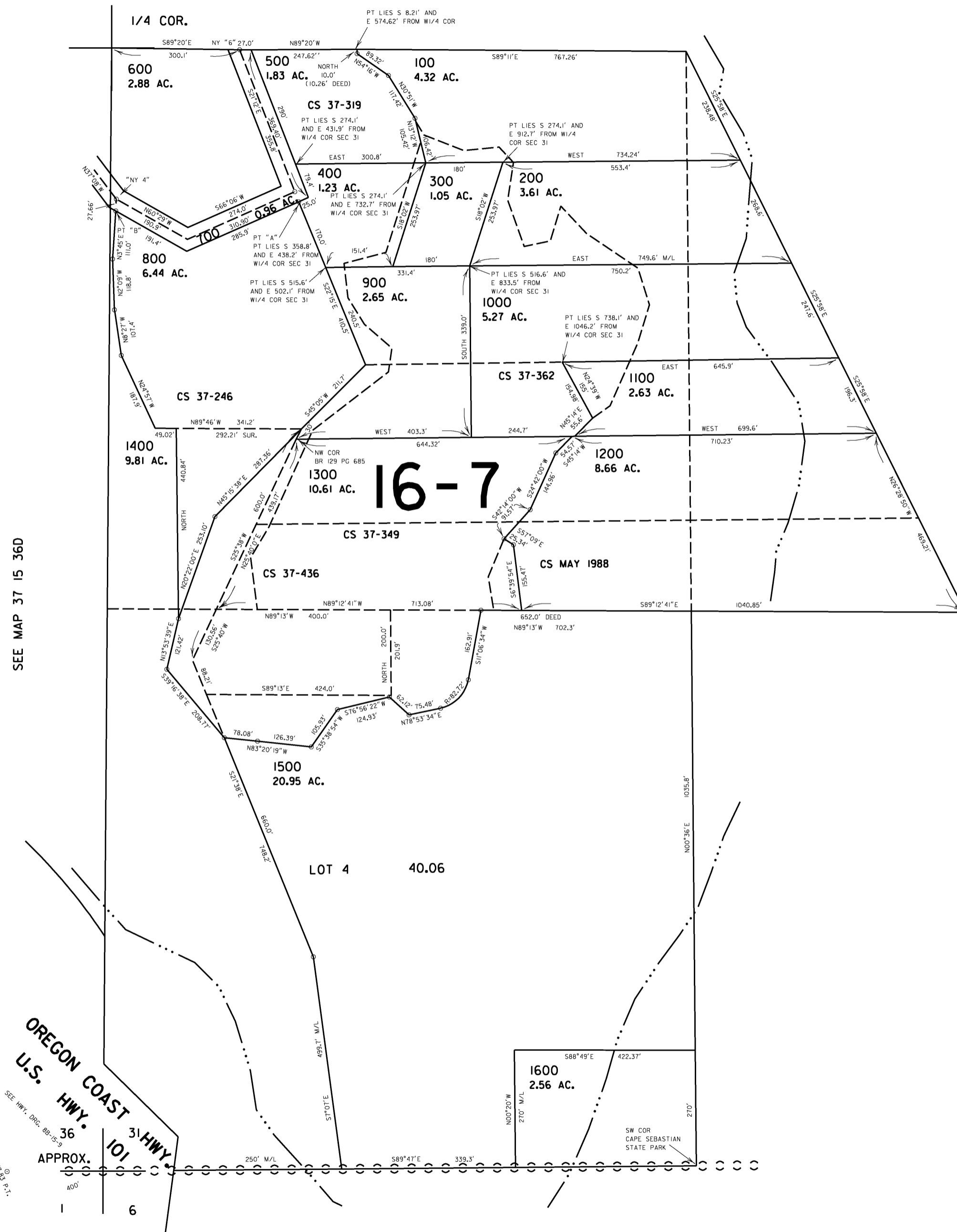
THIS MAP WAS PREPARED FOR
ASSESSMENT PURPOSE ONLY

SW1/4 SEC. 31 T.37S. R.14W. W.M.
CURRY COUNTY

37 14 31C

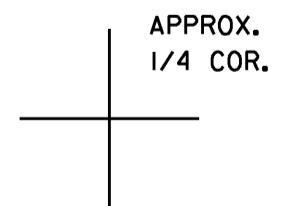
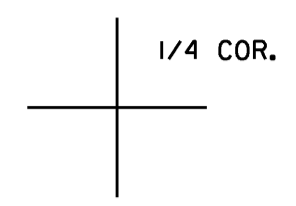
1" = 200'

SEE MAP 37 14 31



SEE MAP 37 15 36D

SEE MAP 37 14 31



SEE MAP 38 14 6

Revised
1/29/2007, RAA
37 14 31C

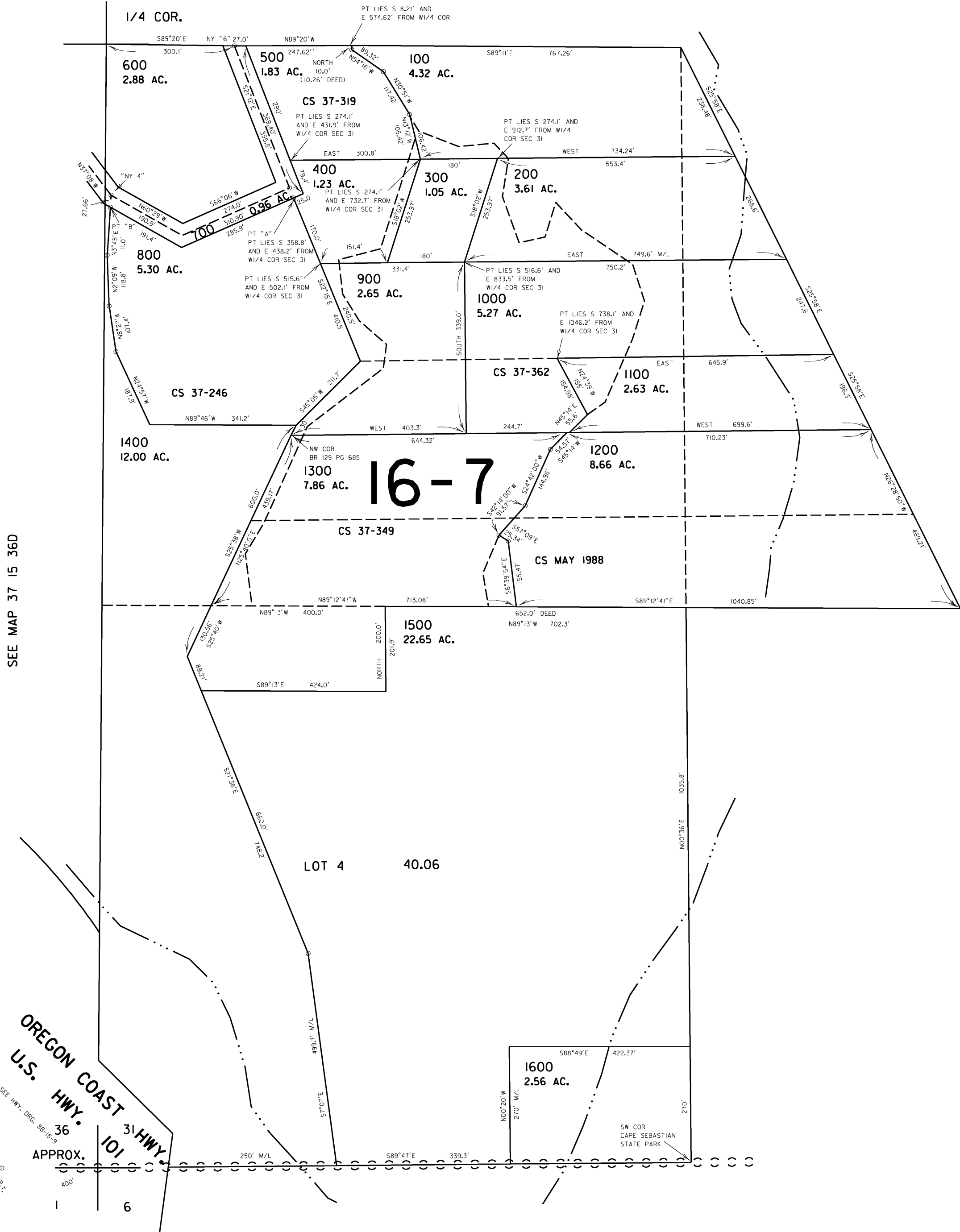
THIS MAP WAS PREPARED FOR
ASSESSMENT PURPOSE ONLY

SW1/4 SEC. 31 T.37S. R.14W. W.M.
CURRY COUNTY

37 14 31C

1" = 200'

SEE MAP 37 14 31



SEE MAP 37 15 36D

SEE MAP 37 14 31

OREGON COAST
U.S. HWY. 36
101 HWY.
APPROX.
SEE HWY. DRC. 88-15-9
387-13.8, P.1.

SEE MAP 38 14 6

1/4 COR.

APPROX.
1/4 COR.

Revised 6/28/00, CS

37 14 31C