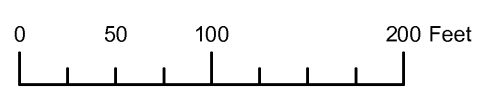
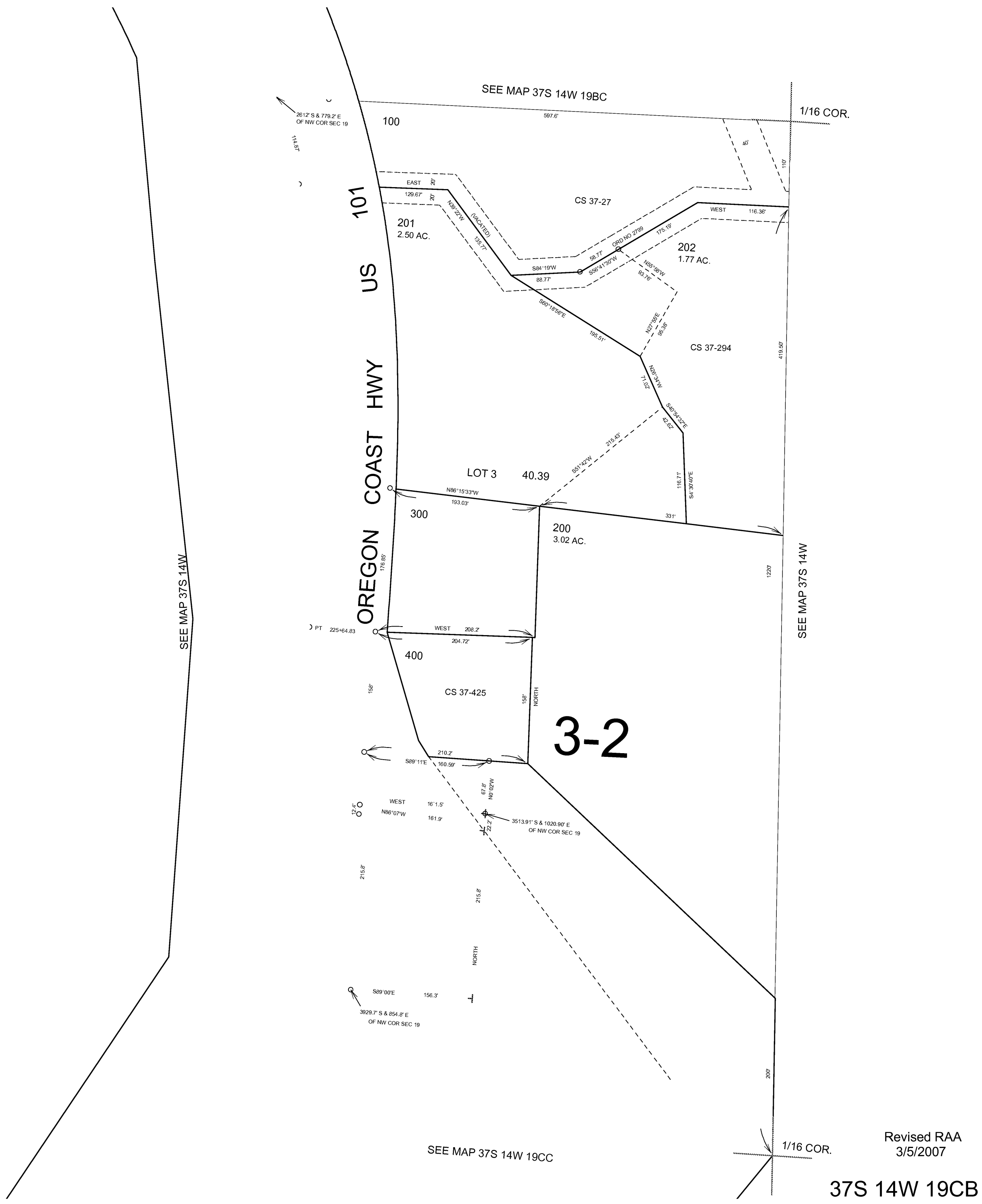
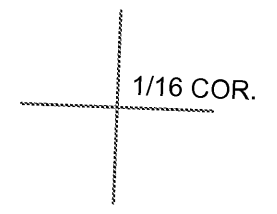
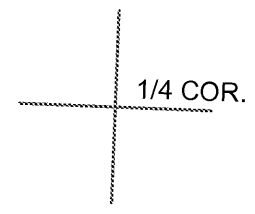


THIS MAP WAS PREPARED FOR ASSESSMENT PURPOSE ONLY

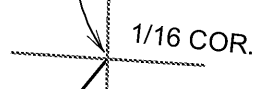


NW1/4 SW1/4 SECTION 19 T.37S. R.14W. W.M. CURRY COUNTY
1" = 100'

37S 14W 19CB
CANCELLED NO.
500
501



SEE MAP 37S 14W 19CC



Revised RAA
3/5/2007

37S 14W 19CB

