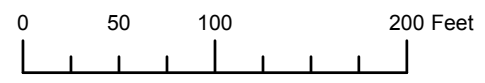


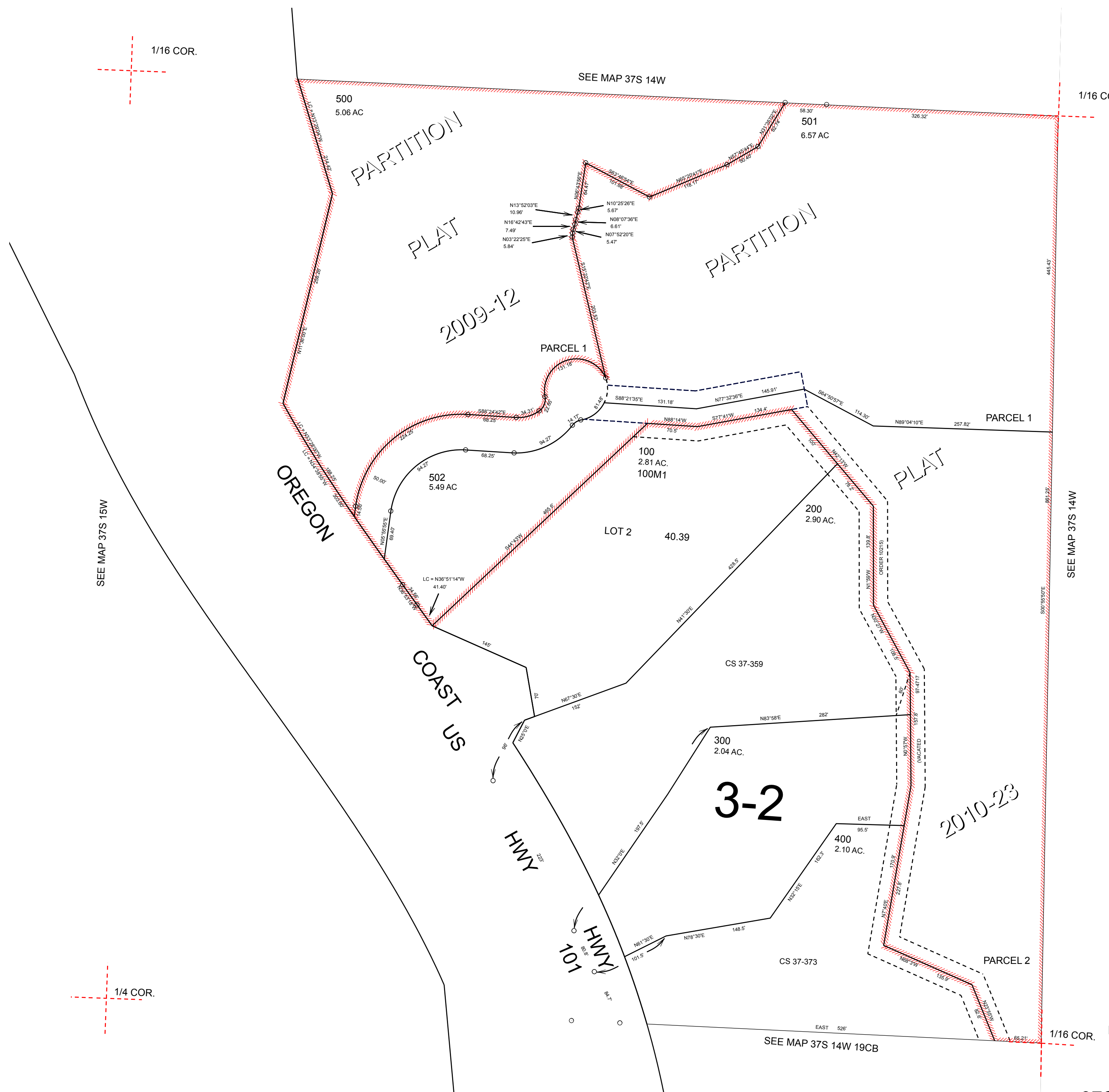
THIS MAP WAS PREPARED FOR ASSESSMENT PURPOSE ONLY



S.W.1/4 N.W.1/4 SEC.19 T.37S. R.14W. W.M.
CURRY COUNTY
1" = 100'

37S14W19BC

CANCELLED:
501



1/16 COR.

1/16 COR.

SEE MAP 37S 15W

SEE MAP 37S 14W

1/4 COR.

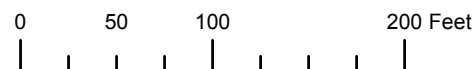
1/16 COR.

SEE MAP 37S 14W 19CB

Revised: RAA
1/19/2011

37S14W19BC

THIS MAP WAS PREPARED FOR ASSESSMENT PURPOSE ONLY

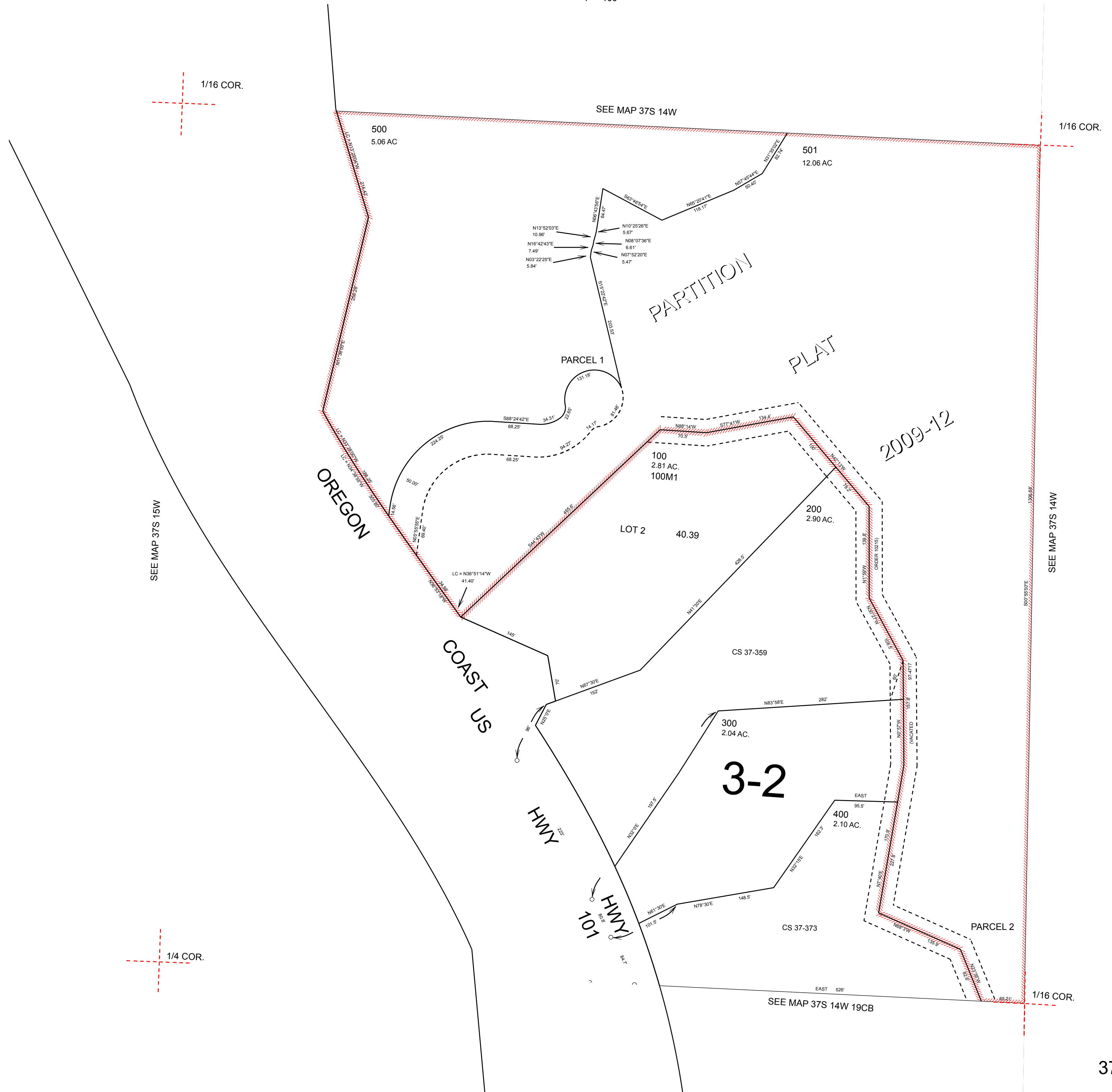


S.W.1/4 N.W.1/4 SEC.19 T.37S. R.14W. W.M.
CURRY COUNTY

1" = 100'

37S14W19BC

CANCELLED:



2009-12

3-2

Revised: RAA
10/26/2009

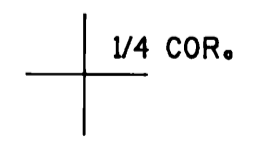
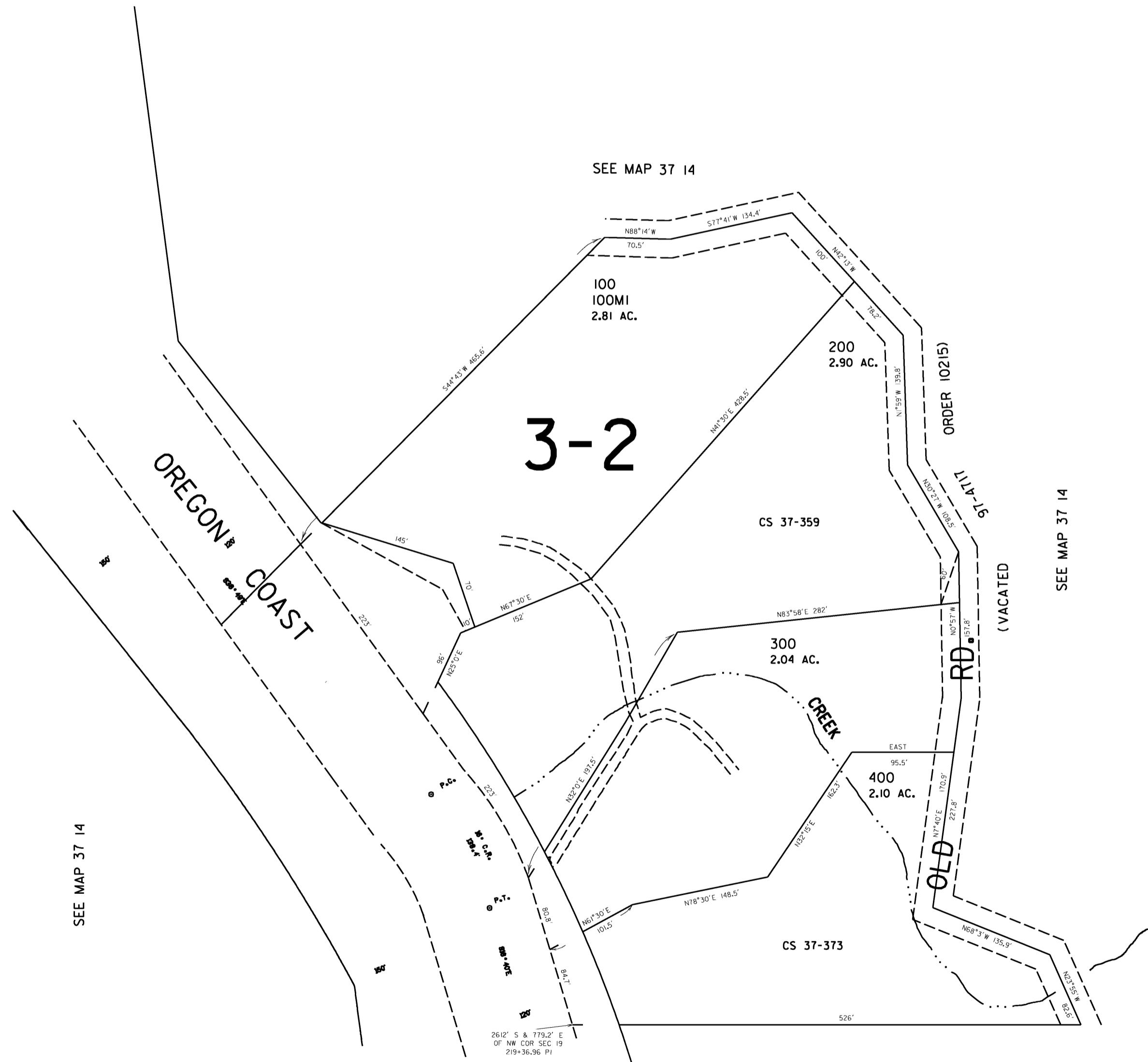
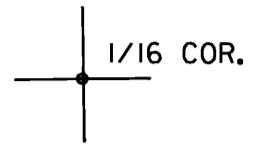
37S14W19BC

THIS MAP WAS PREPARED FOR
ASSESSMENT PURPOSE ONLY

SW1/4 NW1/4 SEC. 19 T.37S. R14W. WM.
CURRY COUNTY

37 14 19BC

1" = 100'



SEE MAP 37 14 19CB

Revised 6/4/99, 9C

37 14 19BC