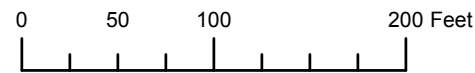


THIS MAP WAS PREPARED FOR ASSESSMENT PURPOSE ONLY



N.W.1/4 N.W.1/4 SEC.19 T.37S. R.14W. W.M.
CURRY COUNTY
1" = 100'

37S14W19BB

CANCELLED:



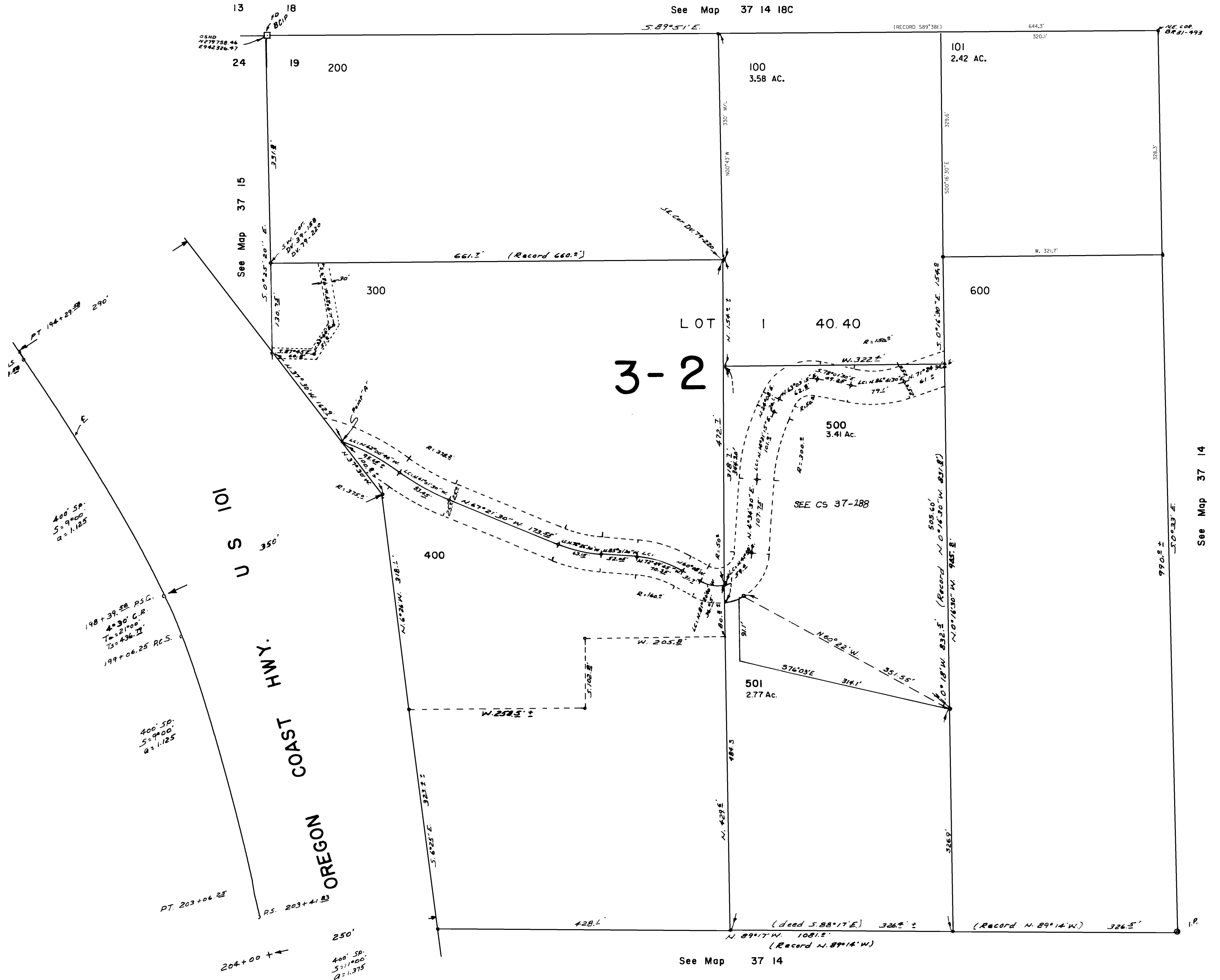
1/16 COR. Revised: RAA
10/25/2010

37S14W19BB

THIS MAP WAS PREPARED FOR
ASSESSMENT PURPOSE ONLY

NW 1/4 NW 1/4 Sec 19 T37S R14W WM
CURRY COUNTY
1" = 100'

37 14 198B



See Map 37 14

37 14 198B