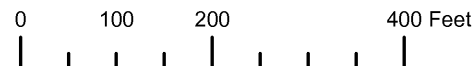


THIS MAP WAS PREPARED FOR ASSESSMENT PURPOSE ONLY

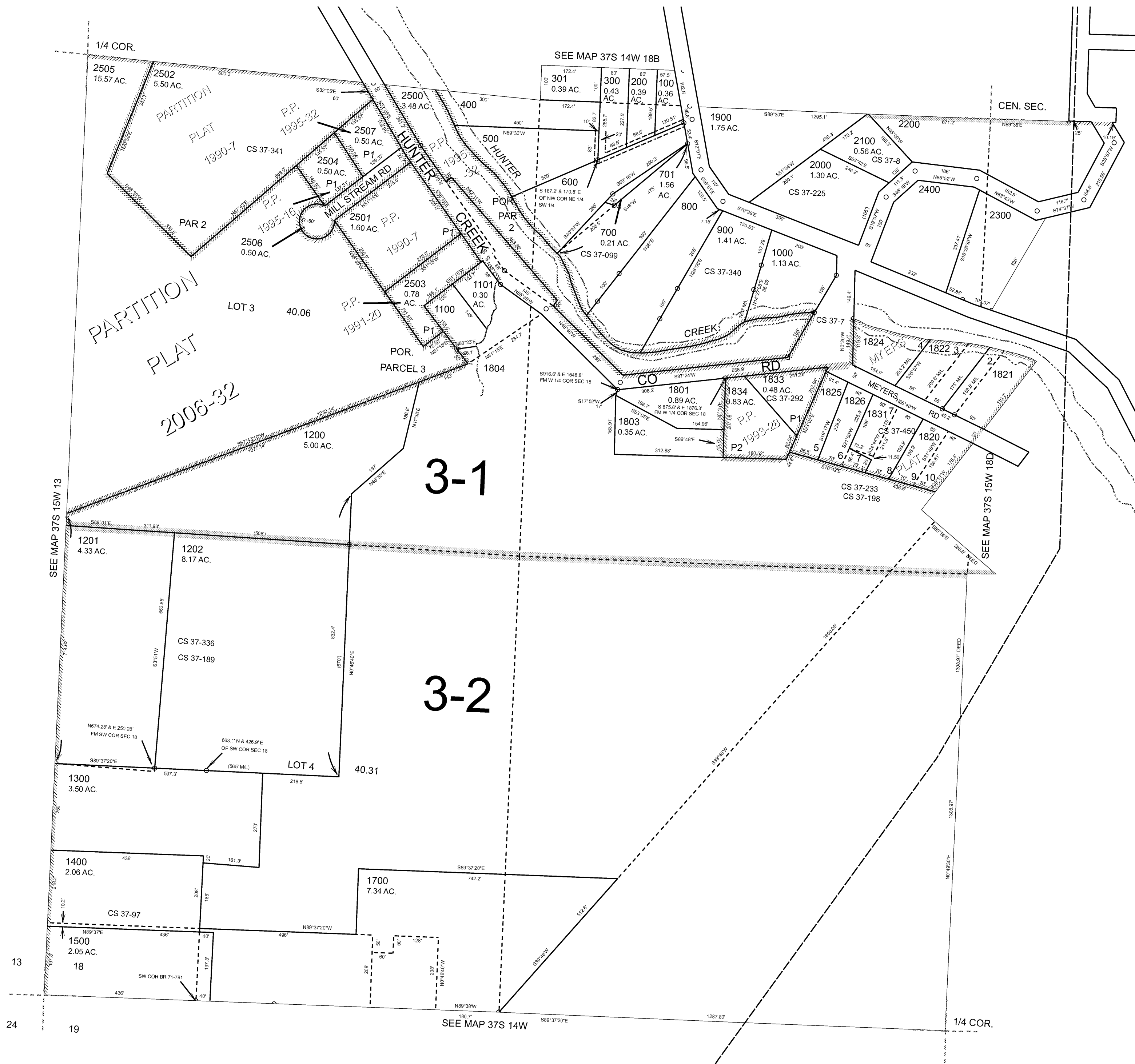


S.W. 1/4 SEC. 18 T.37S. R.14W. W.M. CURRY COUNTY

1" = 200'

37S14W18C

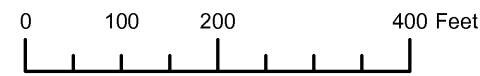
- CANCELLED:
- 101
- 102
- 1001
- 1501
- 1600
- 1601
- 1710
- 1800
- 1802
- 1823
- 1827
- 1828
- 1829
- 1830
- 1832
- 1835



Revised: RAA 5/11/2009

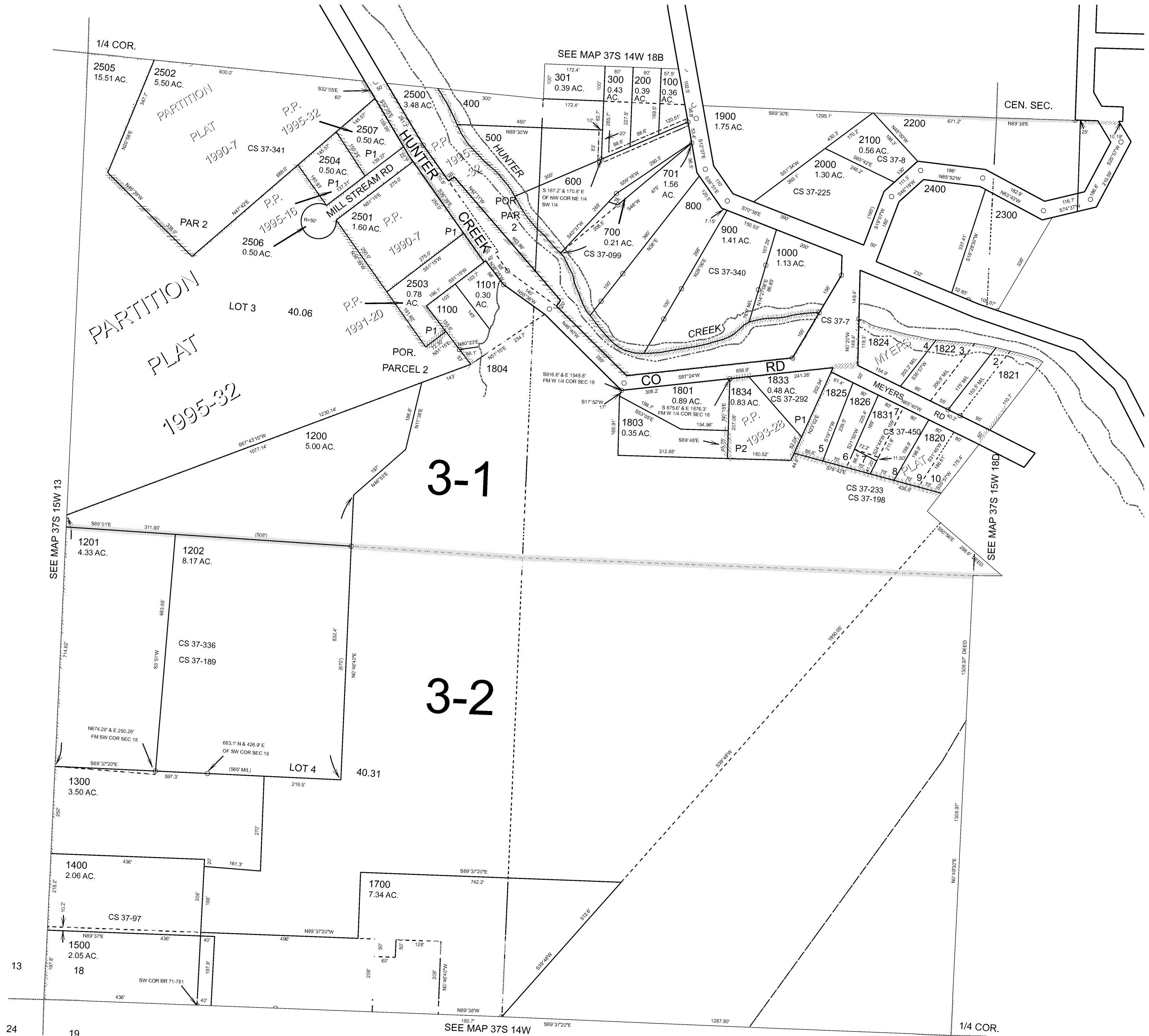
37S14W18C

THIS MAP WAS PREPARED FOR ASSESSMENT PURPOSE ONLY



S.W.1/4 SEC.18 T.37S. R.14W. W.M. CURRY COUNTY 1" = 200'

- CANCELLED:
- 101
- 702
- 1001
- 1501
- 1600
- 1601
- 1710
- 1800
- 1802
- 1823
- 1827
- 1828
- 1829
- 1830
- 1832
- 1835
- 1826



3-1

3-2

13

24

19

THIS MAP WAS PREPARED FOR
ASSESSMENT PURPOSE ONLY

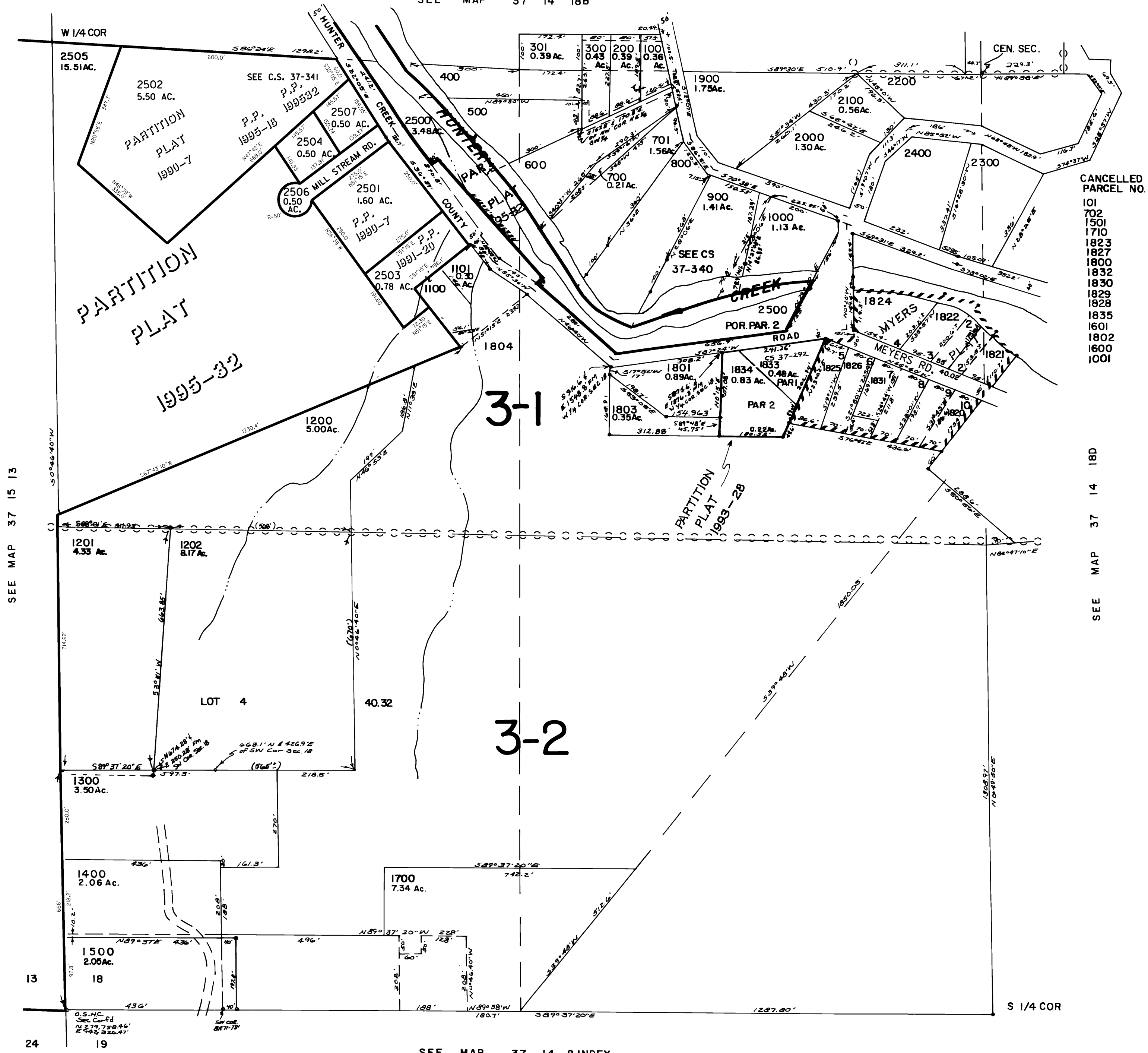
SW 1/4 SEC. 18 T.37S. R.14W. W.M.

37 14 18C

CURRY COUNTY

1" = 200'

SEE MAP 37 14 18B



- CANCELLED
PARCEL NO.
- 101
 - 102
 - 1501
 - 1710
 - 1823
 - 1827
 - 1800
 - 1832
 - 1830
 - 1829
 - 1828
 - 1835
 - 1601
 - 1802
 - 1600
 - 1001

SEE MAP 37 15 13

SEE MAP 37 14 18D

SEE MAP 37 14 8 INDEX

37 14 18C

REVISED 6-6-96, 9C