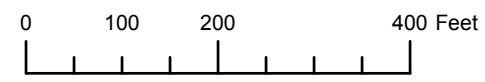


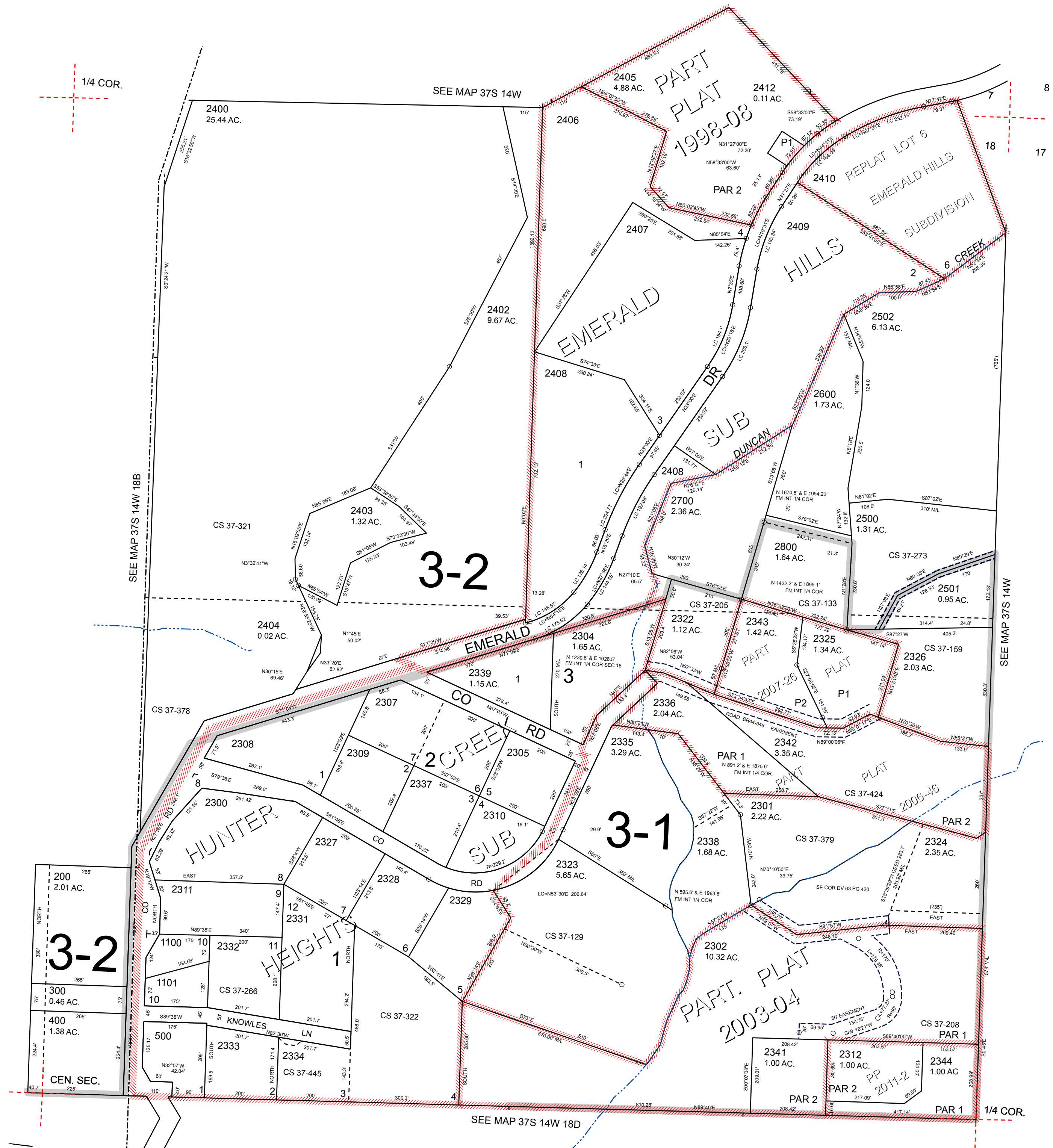
THIS MAP WAS PREPARED FOR ASSESSMENT PURPOSE ONLY



N.E. 1/4 SEC. 18 T.37S. R.14W. W.M. CURRY COUNTY 1" = 200'

37S14W18A

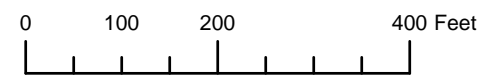
- CANCELLED:
- 100
- 600 THRU 1090
- 2306
- 2313 THRU 2321
- 2330
- 2340
- 2401
- 2411
- 2413
- 2601



Revised: RAA 9/14/2011

37S14W18A

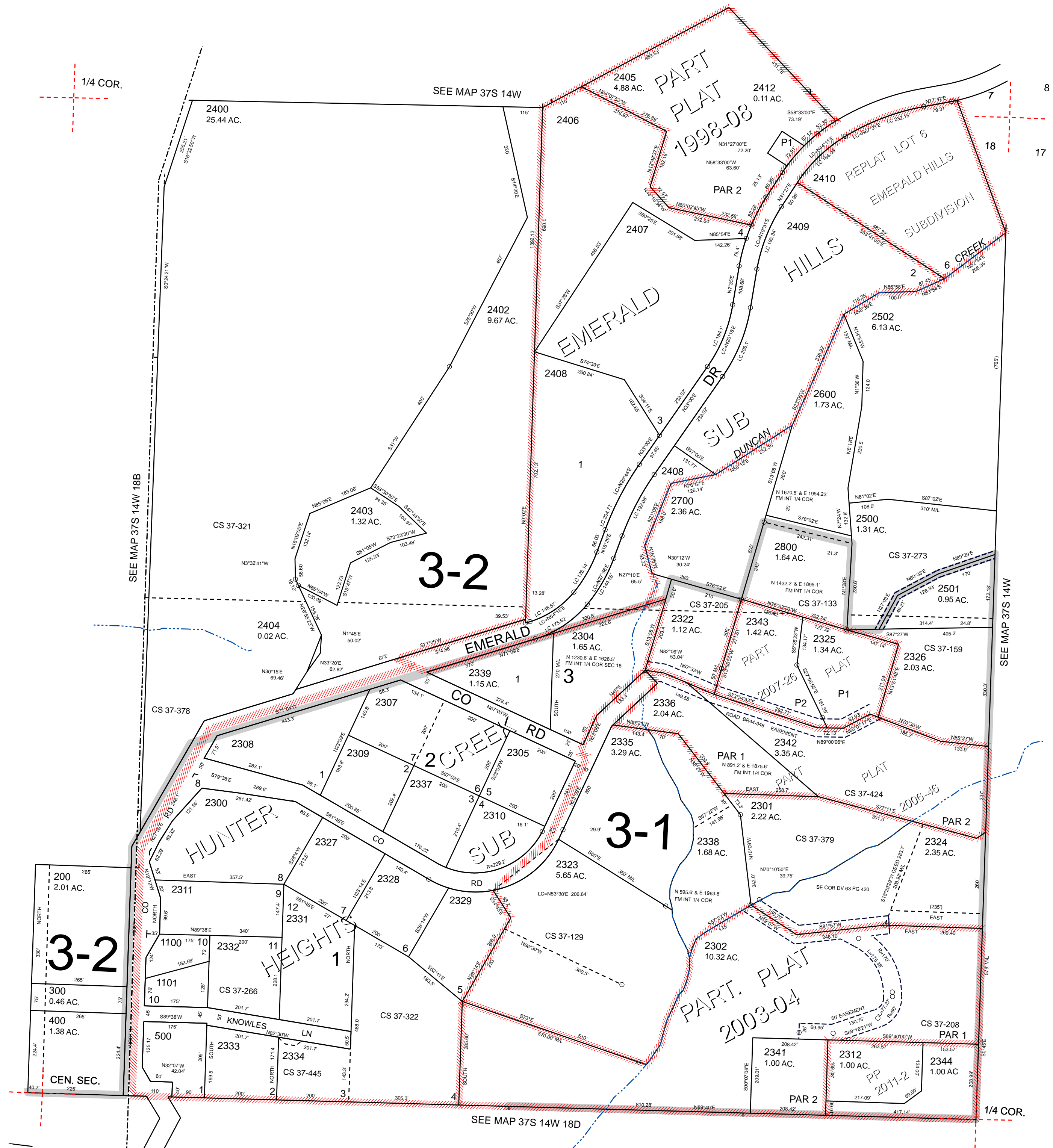
THIS MAP WAS PREPARED FOR ASSESSMENT PURPOSE ONLY



N.E. 1/4 SEC. 18 T.37S. R.14W. W.M. CURRY COUNTY 1" = 200'

37S14W18A

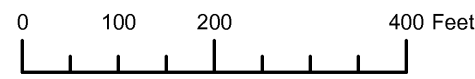
- CANCELLED:
- 100
- 600 THRU 1090
- 2306
- 2313 THRU 2321
- 2330
- 2340
- 2401
- 2411
- 2413
- 2601



Revised: RAA 5/2/2011

37S14W18A

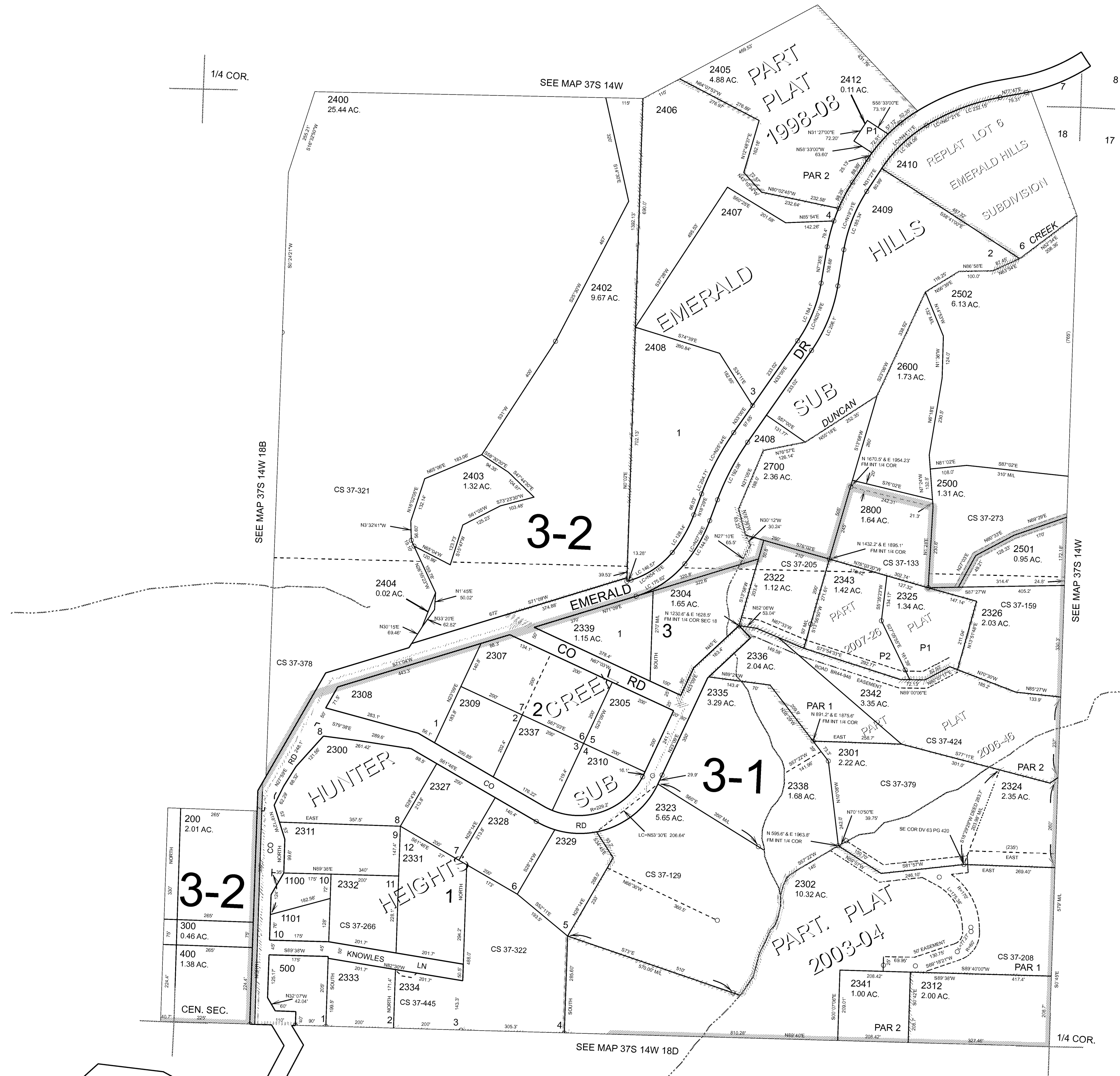
THIS MAP WAS PREPARED FOR ASSESSMENT PURPOSE ONLY



N.E. 1/4 SEC. 18 T.37S. R.14W. W.M. CURRY COUNTY 1" = 200'

37S14W18A

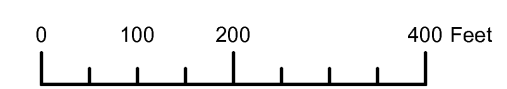
- CANCELLED:
- 100
- 600 THRU 1090
- 2306
- 2313 THRU 2321
- 2330
- 2340
- 2401
- 2411
- 2413
- 2601



Revised RAA 7/16/2008

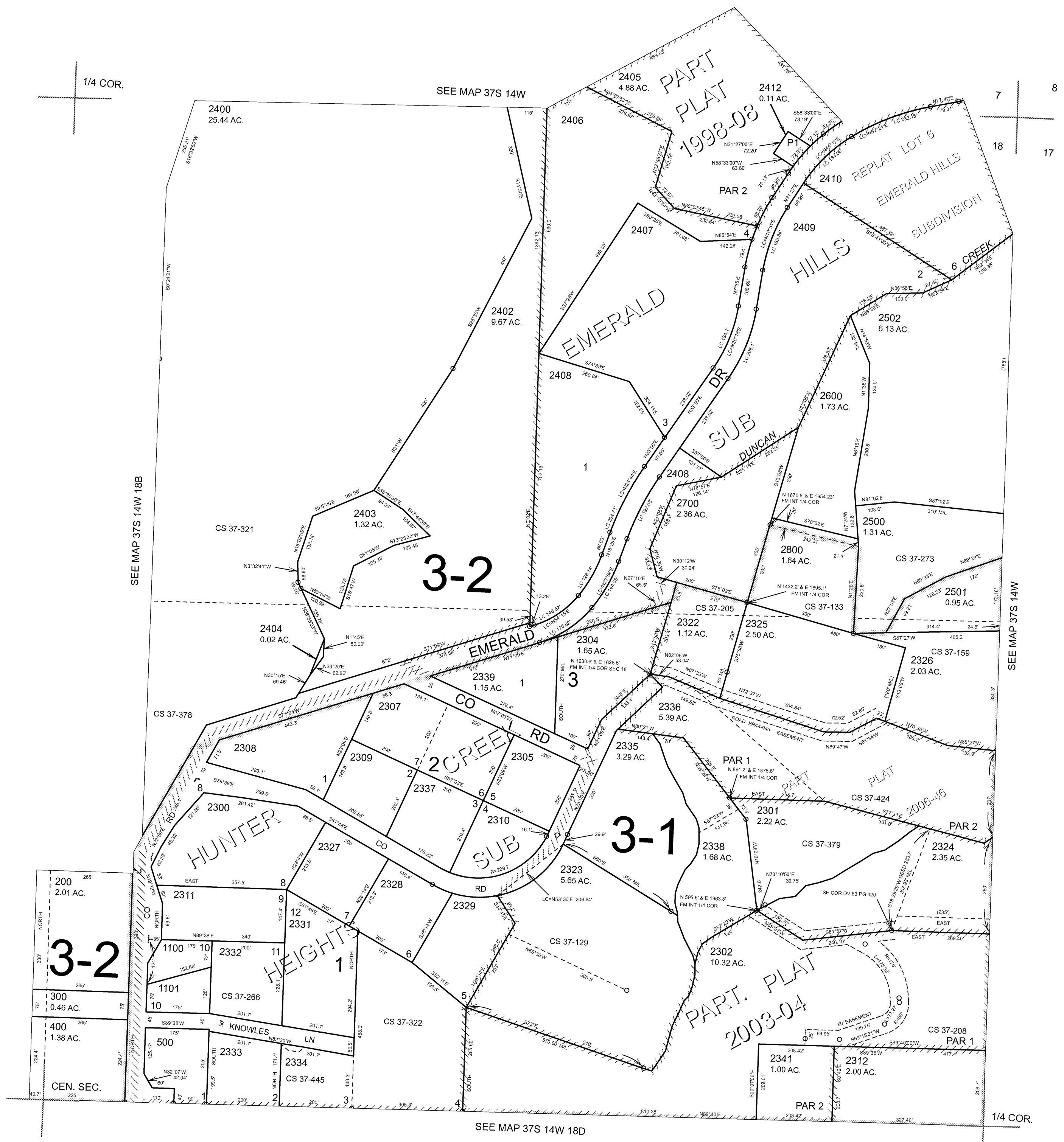
37S14W18A

THIS MAP WAS PREPARED FOR ASSESSMENT PURPOSE ONLY



NE1/4 SECTION 18 T.37S. R.14W. W.M. CURRY COUNTY 1" = 200'

37S 14W 18A CANCELLED NO. 100 600 THRU 1090 2306 2313 THRU 2321 2330 2340 2401 2411 2413 2601



1/4 COR.

7 8 18 17

SEE MAP 37S 14W 18B

SEE MAP 37S 14W

3-2 200 2.01 AC. 300 0.46 AC. 400 1.38 AC. CEN. SEC.

SEE MAP 37S 14W 18D

1/4 COR.

Revised RAA 7/2/2007

37S 14W 18A

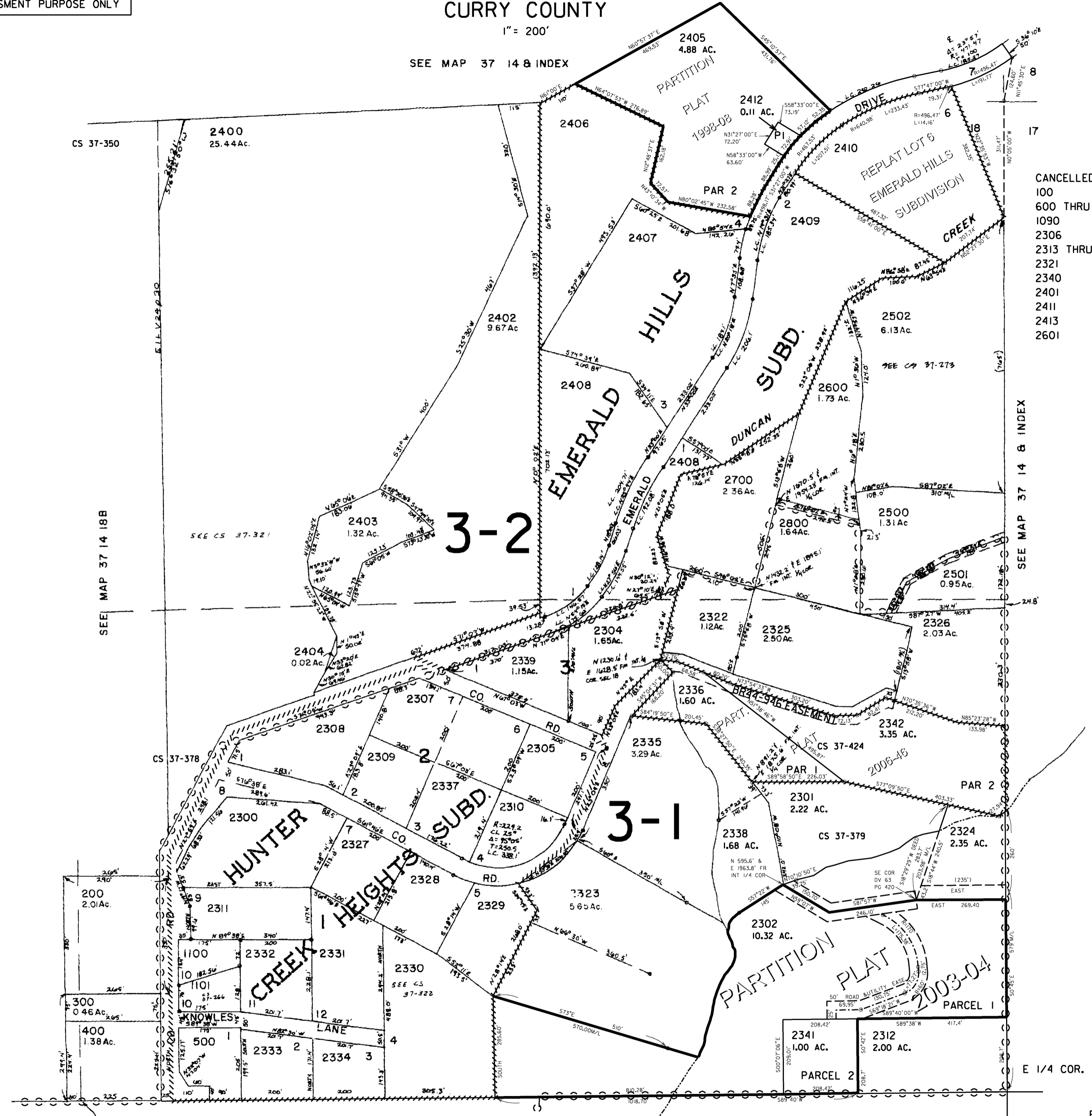
THIS MAP WAS PREPARED FOR ASSESSMENT PURPOSE ONLY

NE1/4 SEC 18 T.37S. R.14W. W.M. CURRY COUNTY

37 14 18A

1" = 200'

SEE MAP 37 14 B INDEX



CANCELLED NO. 100 600 THRU 1090 2306 2313 THRU 2321 2340 2401 2411 2413 2601

SEE MAP 37 14 B INDEX

E 1/4 COR.

CENT. SEC.

SEE MAP 37 14 18D

Revised 12/20/2006, RAA 37 14 18A

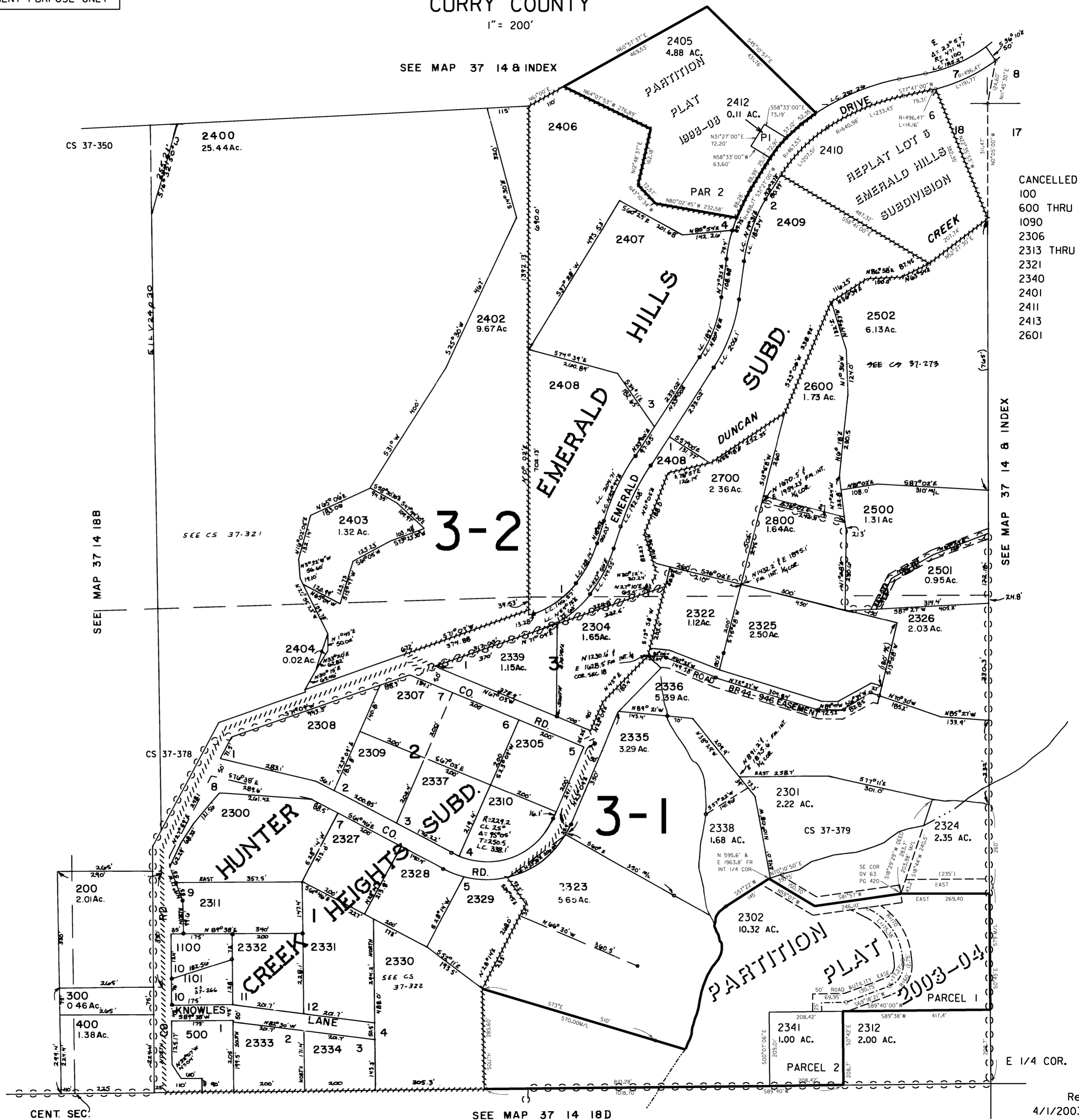
THIS MAP WAS PREPARED FOR  
ASSESSMENT PURPOSE ONLY

NE1/4 SEC 18 T.37S. R.14W. W.M.  
CURRY COUNTY

37 14 18A

1" = 200'

SEE MAP 37 14 B INDEX



CANCELLED NO.  
100  
600 THRU  
1090  
2306  
2313 THRU  
2321  
2340  
2411  
2413  
2601

SEE MAP 37 14 B INDEX

E 1/4 COR.

Revised  
4/1/2003, DBJ

37 14 18A