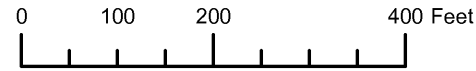




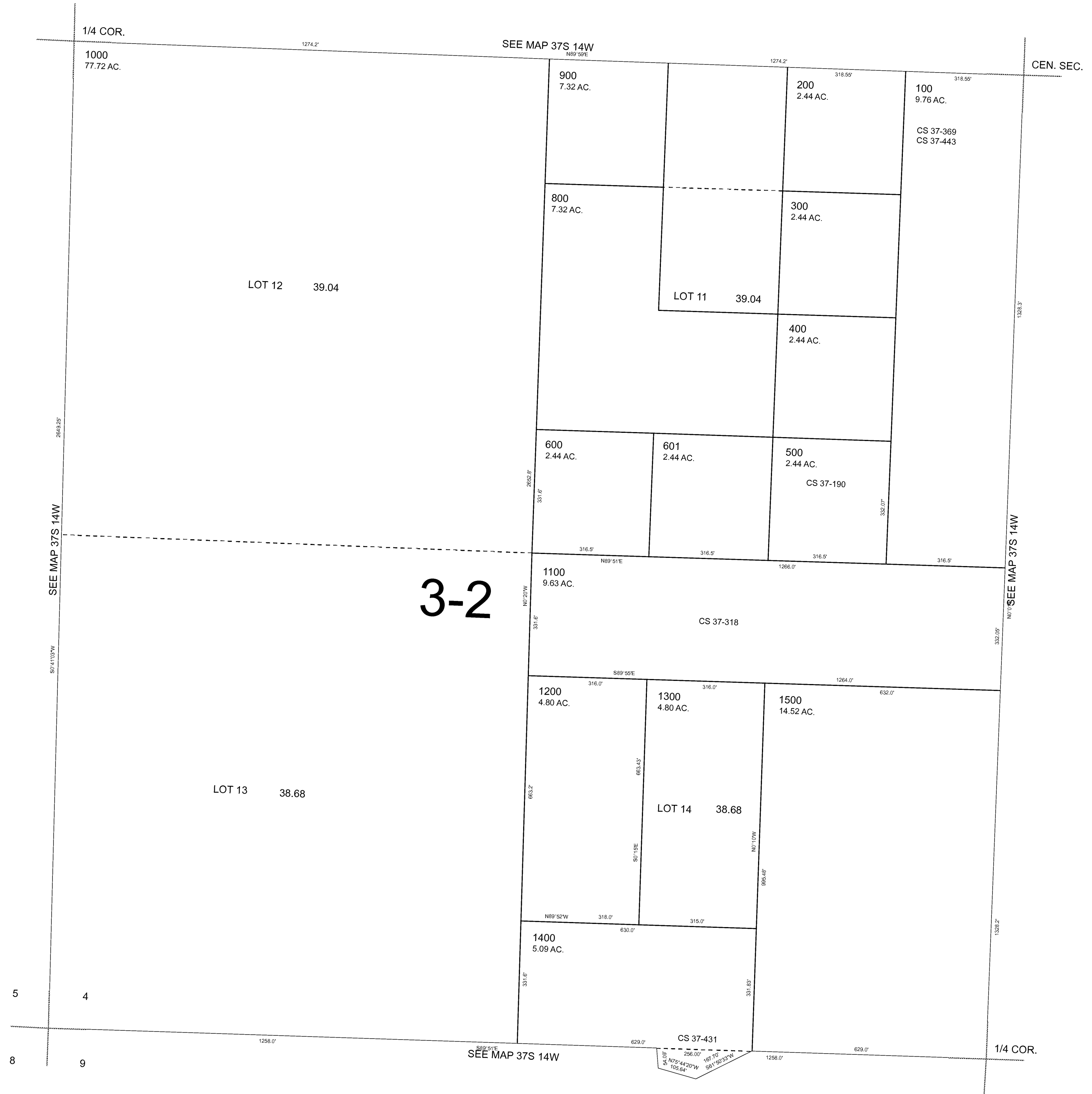
THIS MAP WAS PREPARED FOR ASSESSMENT PURPOSE ONLY



S.W.1/4 SEC.4 T.37S. R.14W. W.M.  
CURRY COUNTY  
1" = 200'

37S14W04C

CANCELLED:  
700



Revised RAA  
5/28/2008

37S14W04C

THIS MAP WAS PREPARED FOR  
ASSESSMENT PURPOSE ONLY

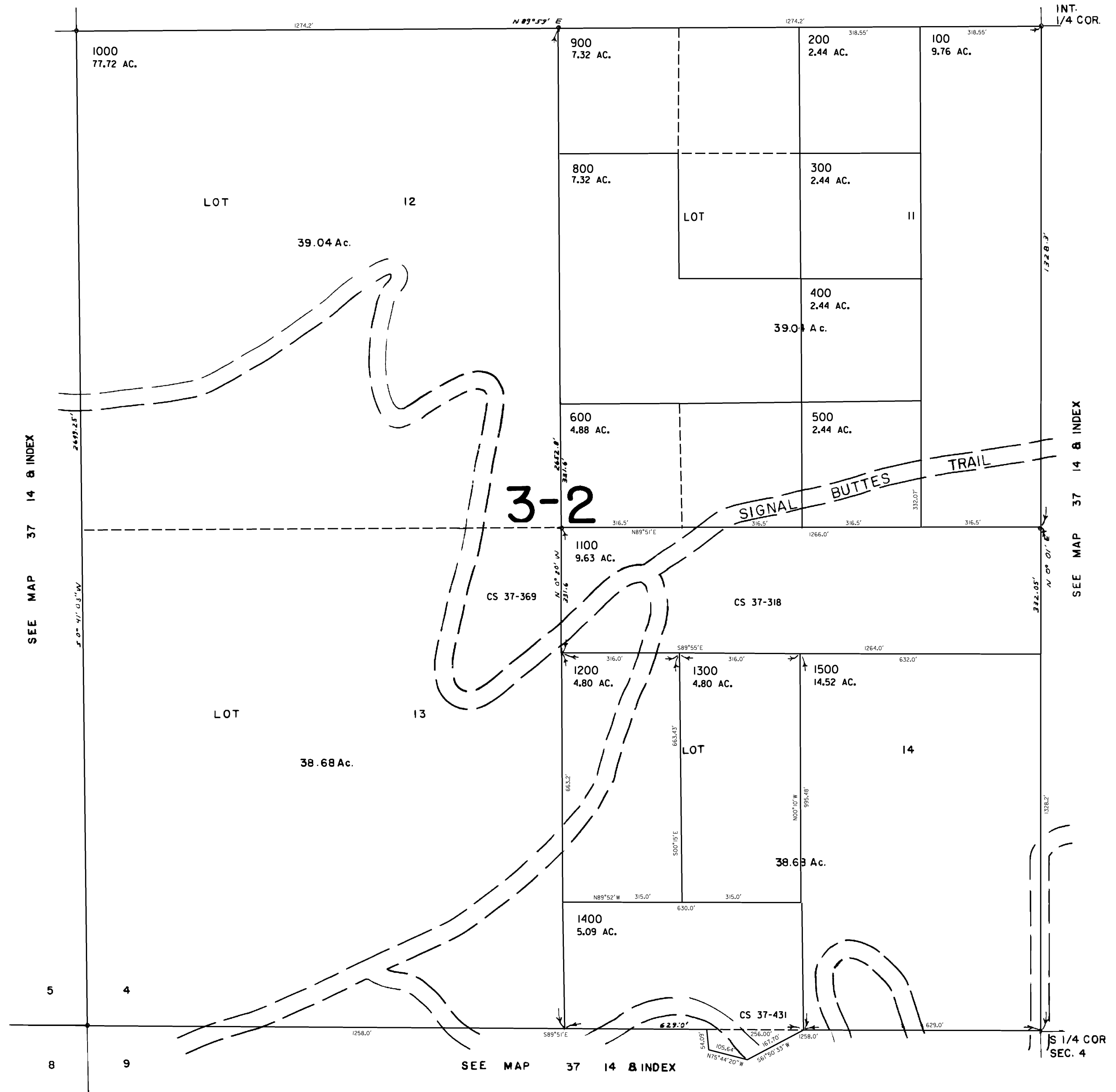
SW1/4 SECTION 4 T.37S. R.14W. W.M.  
CURRY COUNTY

37 14 04C

1" = 200'

SEE MAP 37 14 & INDEX

CANCELLED NO.  
700



Revised  
9/20/2006, RAA  
37 14 04C

