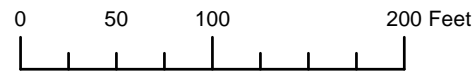


THIS MAP WAS PREPARED FOR ASSESSMENT PURPOSE ONLY



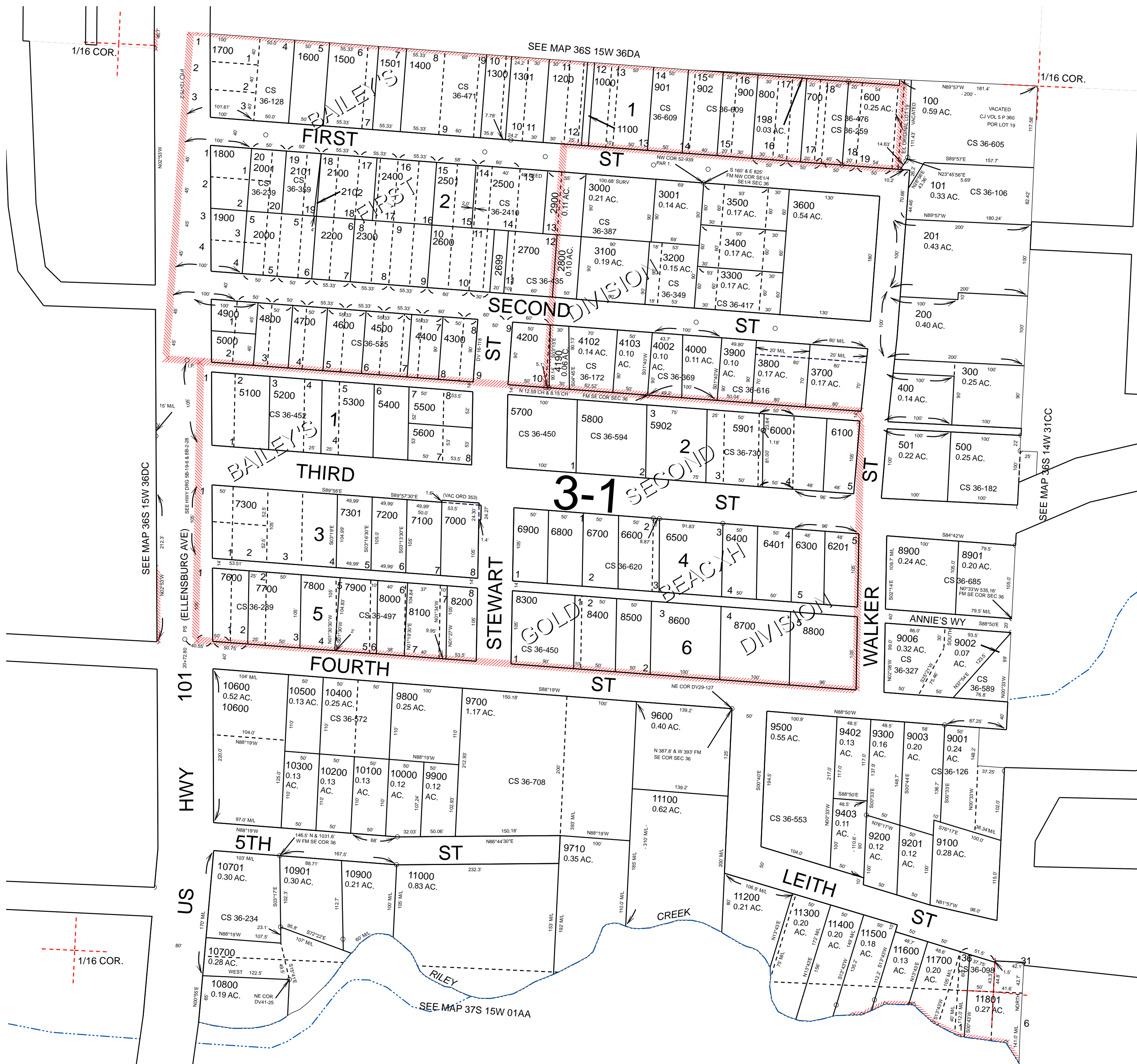
S.E. 1/4 S.E. 1/4 SEC. 36 T. 36S. R. 15W. W.M. CURRY COUNTY

1" = 100'

36S15W36DD GOLD BEACH

CANCELLED:

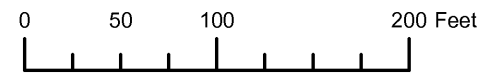
- 199
- 202
- 1302
- 3002
- 4001
- 4100
- 4101
- 4201
- 4399
- 4800A1
- 5900
- 6200
- 7400
- 7500
- 8201
- 9000
- 9004
- 9005
- 9007
- 9200U2
- 9200U3
- 9400
- 9401
- 10601
- 11800



Revised: RAA 11/30/2009

GOLD BEACH 36S15W36DD

THIS MAP WAS PREPARED FOR ASSESSMENT PURPOSE ONLY



S.E. 1/4 S.E. 1/4 SEC. 36 T.36S. R.15W. W.M. CURRY COUNTY 1" = 100'

36S15W36DD GOLD BEACH

- CANCELLED:
- 199
 - 202
 - 1302
 - 3002
 - 4001
 - 4100
 - 4101
 - 4201
 - 4399
 - 4800A1
 - 5900
 - 6200
 - 7400
 - 7500
 - 8201
 - 9000
 - 9004
 - 9005
 - 9007
 - 9200U2
 - 9200U3
 - 9400
 - 9401
 - 10601
 - 11800



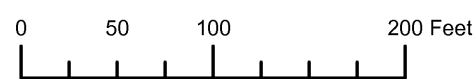
Revised RAA 5/28/2008

GOLD BEACH 36S15W36DD

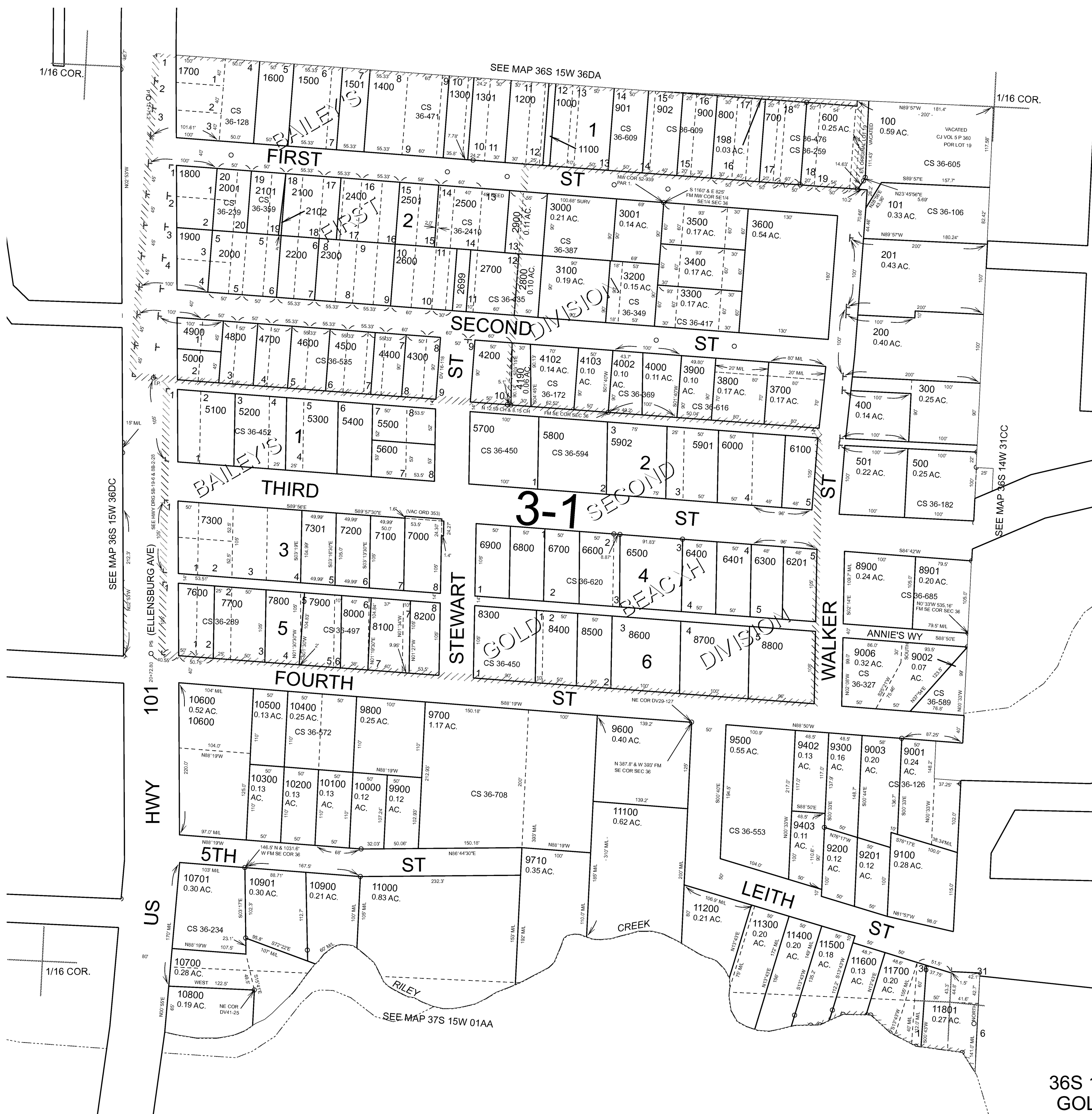
THIS MAP WAS PREPARED FOR ASSESSMENT PURPOSE ONLY

SE1/4 SE1/4 SECTION 36 T.36S. R.15W. W.M. CURRY COUNTY

36S 15W 36DD GOLD BEACH



1" = 100'



Revised RAA 8/15/2007

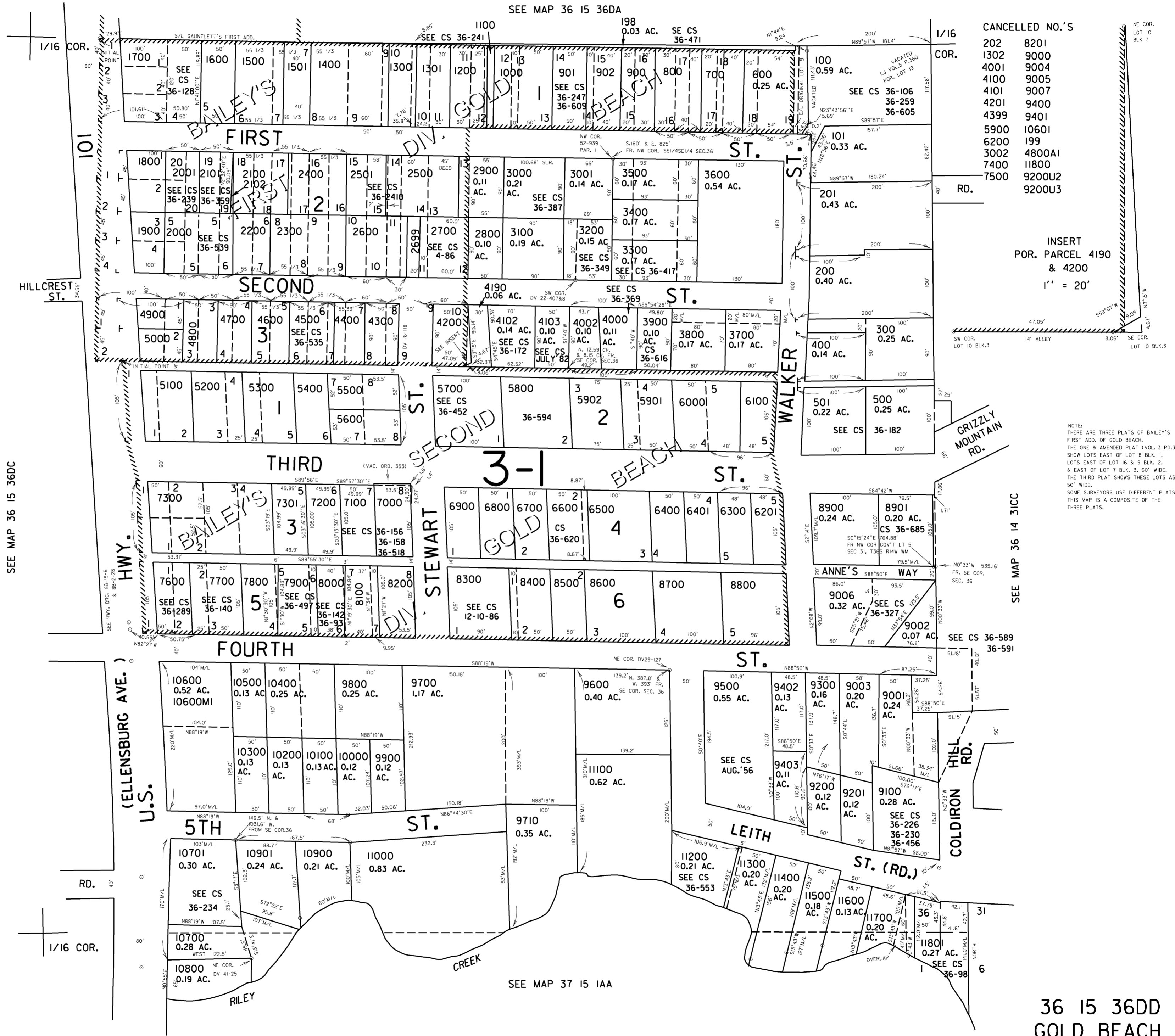
36S 15W 36DD GOLD BEACH

THIS MAP WAS PREPARED FOR ASSESSMENT PURPOSE ONLY

SE1/4 SE1/4 SEC. 36 T.36S. R.15W.1W.M. CURRY COUNTY

36 15 36DD GOLD BEACH

1" = 100'



- CANCELLED NO.'S
- 202
 - 1302
 - 4001
 - 4100
 - 4101
 - 4201
 - 4399
 - 5900
 - 6200
 - 3002
 - 7400
 - 7500
 - 8201
 - 9000
 - 9004
 - 9005
 - 9007
 - 9400
 - 9401
 - 10601
 - 199
 - 4800A1
 - 11800
 - 9200U2
 - 9200U3

INSERT POR. PARCEL 4190 & 4200 1" = 20'

NOTES: THERE ARE THREE PLATS OF BAILEY'S FIRST ADD. OF GOLD BEACH. THE ONE & AMENDED PLAT (VOL.13 PG.362) SHOWS LOTS EAST OF LOT 8 BLK. 1, LOTS EAST OF LOT 16 & 9 BLK. 2, & EAST OF LOT 7 BLK. 3, 60' WIDE. THE THIRD PLAT SHOWS THESE LOTS AS 50' WIDE. SOME SURVEYORS USE DIFFERENT PLATS. THIS MAP IS A COMPOSITE OF THE THREE PLATS.

36 15 36DD GOLD BEACH

Revised 2/2/2006, DBJ

THIS MAP WAS PREPARED FOR ASSESSMENT PURPOSE ONLY

SE1/4 SE1/4 SEC. 36 T.36S. R.15W. W.M. CURRY COUNTY

36 15 36DD GOLD BEACH

1" = 100'



- CANCELLED NO.'S
- 202
 - 1302
 - 4001
 - 4100
 - 4101
 - 4201
 - 4399
 - 5900
 - 6200
 - 3002
 - 7400
 - 7500
 - 8201
 - 9000
 - 9004
 - 9005
 - 9007
 - 9400
 - 9401
 - 10601
 - 199
 - 4800A1
 - 11800
 - 9200U2
 - 9200U3

INSERT
POR. PARCEL 4190
& 4200
1" = 20'

NOTES:
THERE ARE THREE PLATS OF BAILEY'S FIRST ADD. OF GOLD BEACH. THE ONE & AMENDED PLAT (VOL.13 PG.362) SHOWS LOTS EAST OF LOT 8 BLK. 1, LOTS EAST OF LOT 16 & 9 BLK. 2, & EAST OF LOT 7 BLK. 3, 60' WIDE. THE THIRD PLAT SHOWS THESE LOTS AS 50' WIDE. SOME SURVEYORS USE DIFFERENT PLATS. THIS MAP IS A COMPOSITE OF THE THREE PLATS.

36 15 36DD GOLD BEACH

Revised 8/8/2005, DBJ