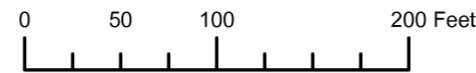


THIS MAP WAS PREPARED FOR ASSESSMENT PURPOSE ONLY



N.W. 1/4 S.E. 1/4 SEC. 36 T.36S. R.15W. W.M.  
CURRY COUNTY  
1" = 100'

36S15W36DB  
GOLD BEACH

- CANCELLED:
- 500
  - 1101
  - 1600
  - 1601
  - 2198
  - 2502
  - 2502M1
  - 2504
  - 2516
  - 2517
  - 2701A1
  - 2702 THRU 2706
  - 2801
  - 2802
  - 2901
  - 3000
  - 3100
  - 3200
  - 4700

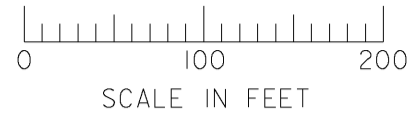


THIS MAP WAS PREPARED FOR  
ASSESSMENT PURPOSE ONLY

NW1/4 SE1/4 SEC. 36 T.36S. R.15W. W.M.  
CURRY COUNTY

36 15 36DB  
GOLD BEACH

1" = 100'



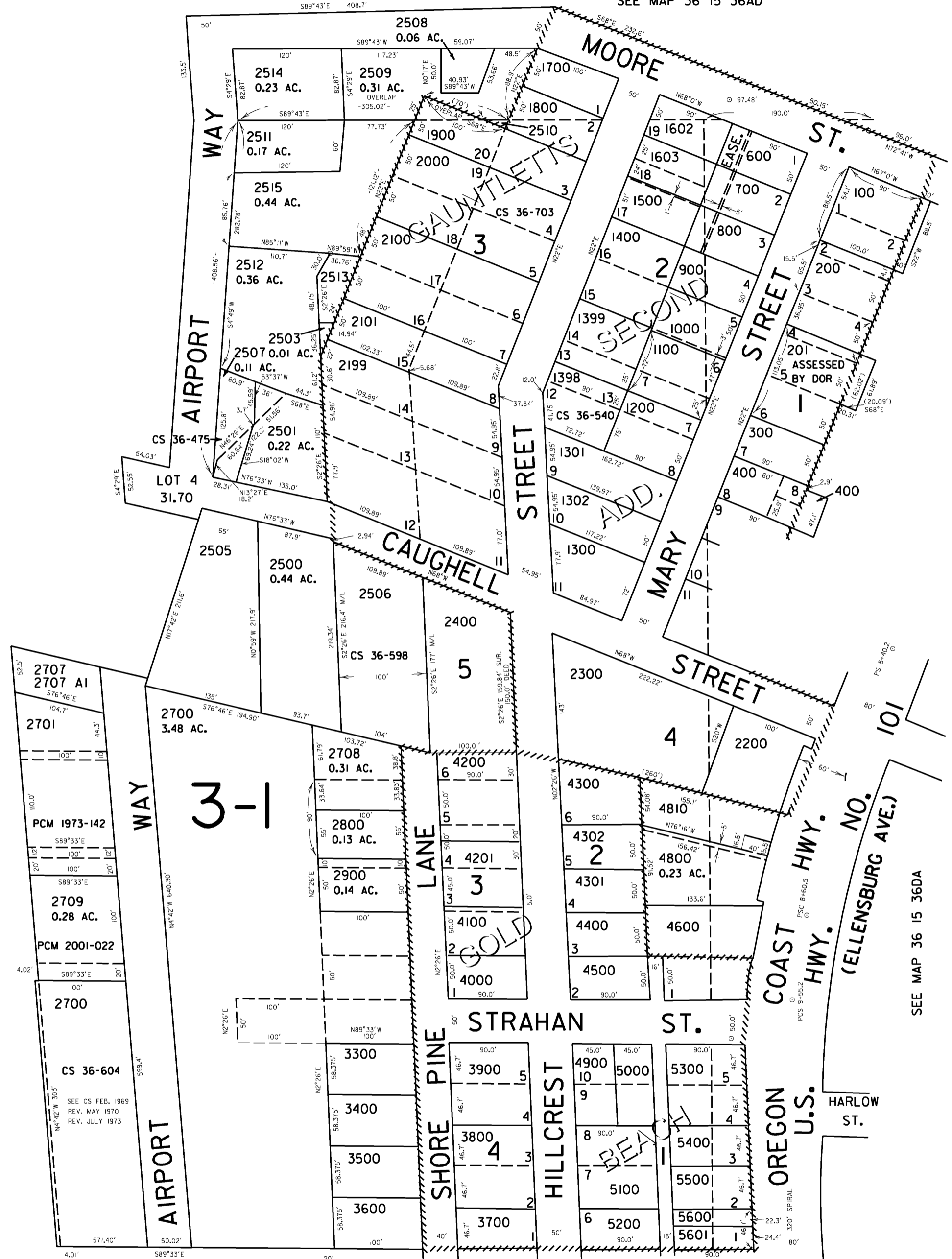
SEE MAP 36 15

SEE MAP 36 15 36AD

SEE MAP 36 15 36

SEE MAP 36 15 36DA

SEE MAP 36 15 36DC



- 500
- 1101
- 1600
- 1601
- 2198
- 2502
- 2502MI
- 2504
- 2516
- 2517
- 2701AI
- 2702 THRU 2706
- 2801
- 2802
- 2901
- 3000
- 3100
- 3200
- 4700

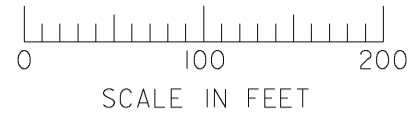
Revised  
7/24/2006, RAA  
36 15 36DB  
GOLD BEACH

THIS MAP WAS PREPARED FOR ASSESSMENT PURPOSE ONLY

NW1/4 SE1/4 SEC. 36 T.36S. R.15W. W.M. CURRY COUNTY

36 15 36DB GOLD BEACH

1" = 100'



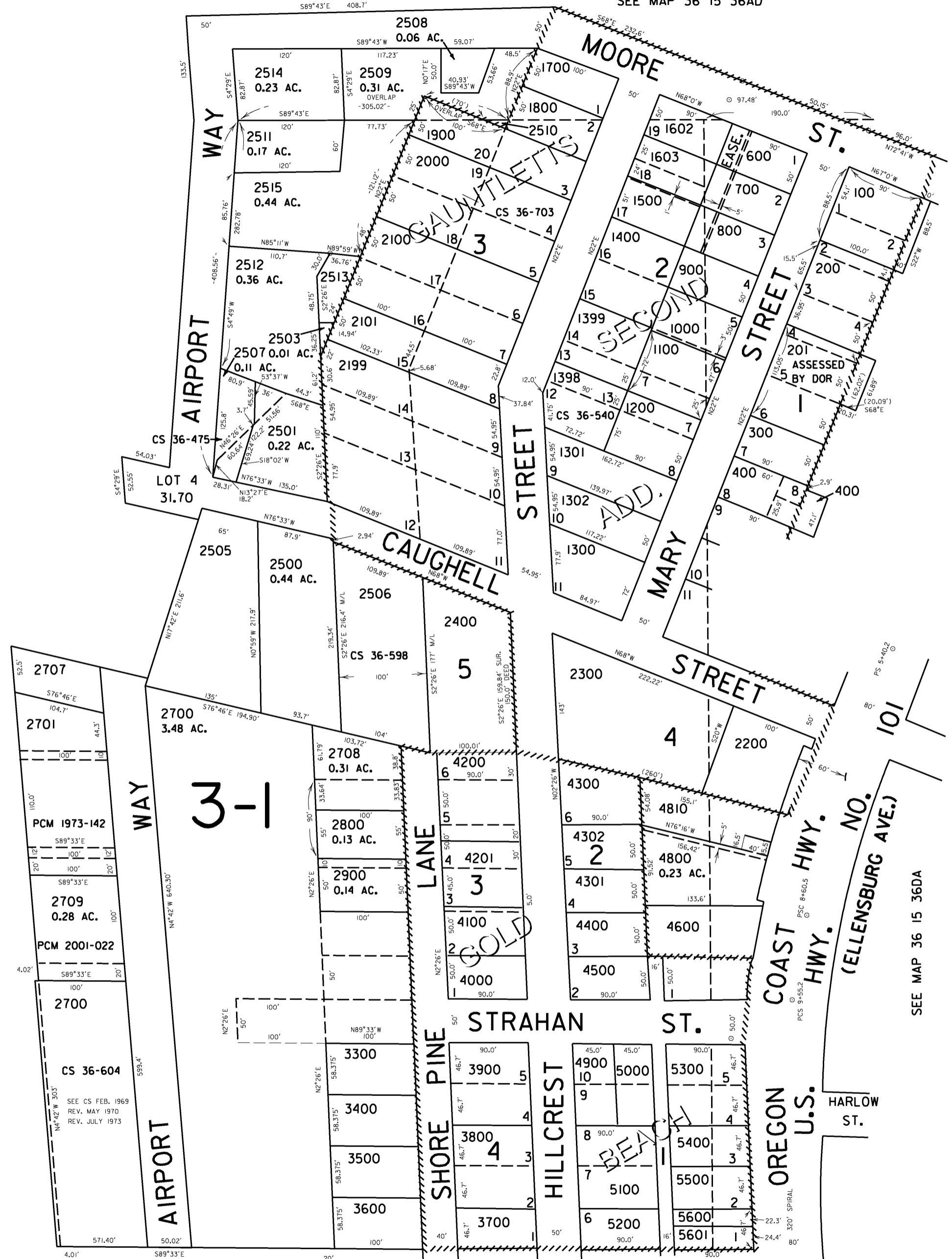
SEE MAP 36 15

SEE MAP 36 15 36AD

SEE MAP 36 15 36

SEE MAP 36 15 36DA

SEE MAP 36 15 36DC



- 500
- 1101
- 1600
- 1601
- 2198
- 2502
- 2502MI
- 2504
- 2516
- 2517
- 2701AI
- 2702 THRU 2706
- 2801
- 2802
- 2901
- 3000
- 3100
- 3200
- 4700

Revised 7/19/2006, RAA 36 15 36DB GOLD BEACH

\$DATES\$

\$FILE\$

\$USERNAMES\$

THIS MAP WAS PREPARED FOR  
ASSESSMENT PURPOSE ONLY

NW1/4 SE1/4 SEC. 36 T.36S. R.15W. W.M.  
CURRY COUNTY

36 15 36DB  
GOLD BEACH

1" = 100'



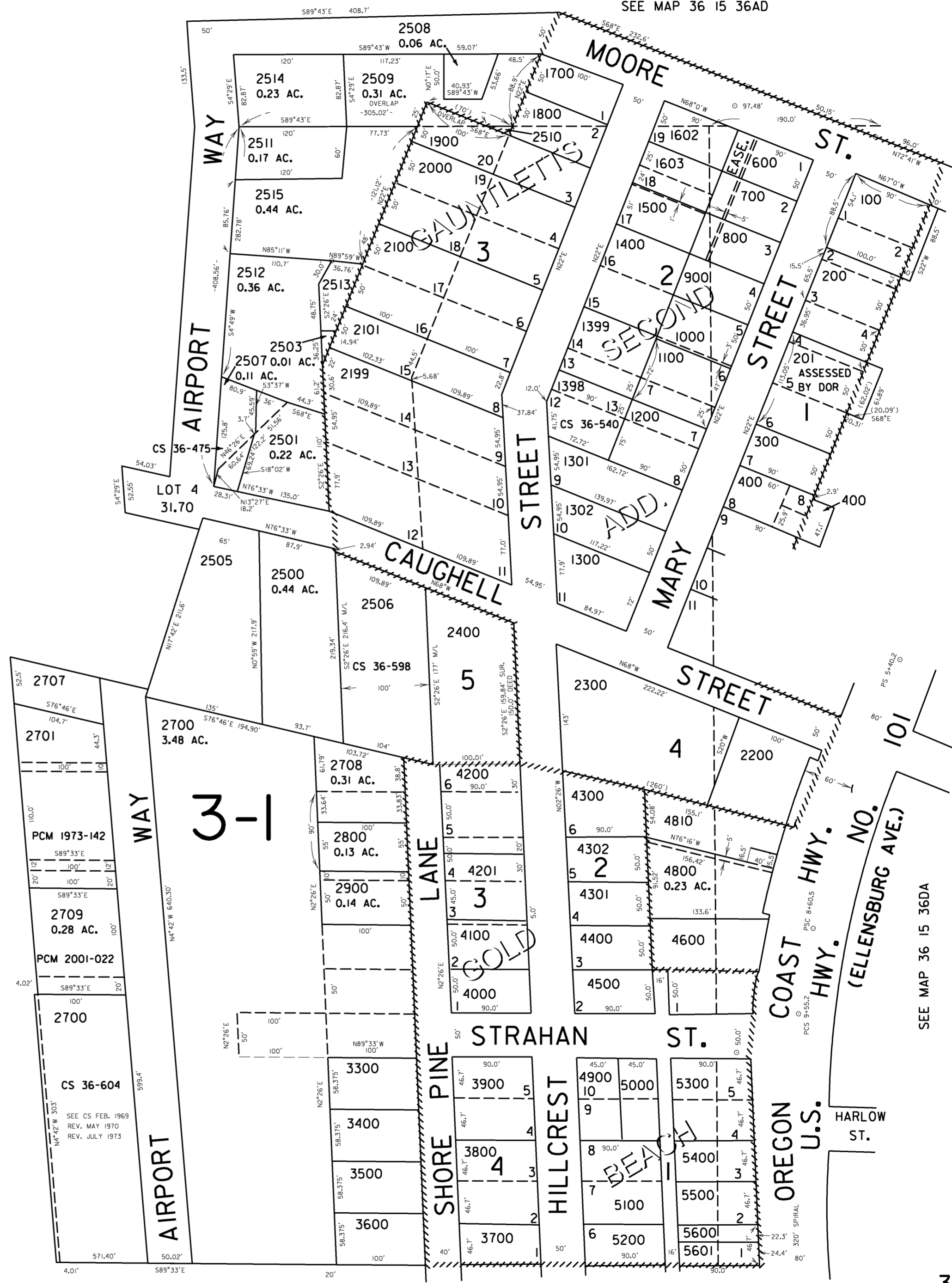
SEE MAP 36 15

SEE MAP 36 15 36AD

- CANCELLED NO.
- 500
- 1101
- 1600
- 1601
- 2198
- 2502
- 2502M1
- 2504
- 2516
- 2517
- 2701A1
- 2702 THRU 2706
- 2801
- 2802
- 2901
- 3000
- 3100
- 3200
- 4700

SEE MAP 36 15 36

SEE MAP 36 15 36DA



SEE MAP 36 15 36DC

Revised  
11/22/2005, DBJ

36 15 36DB  
GOLD BEACH

THIS MAP WAS PREPARED FOR  
ASSESSMENT PURPOSE ONLY

NW1/4 SE1/4 SEC. 36 T.36S. R.15W. W.M.  
CURRY COUNTY

36 15 36DB  
GOLD BEACH

1" = 100'

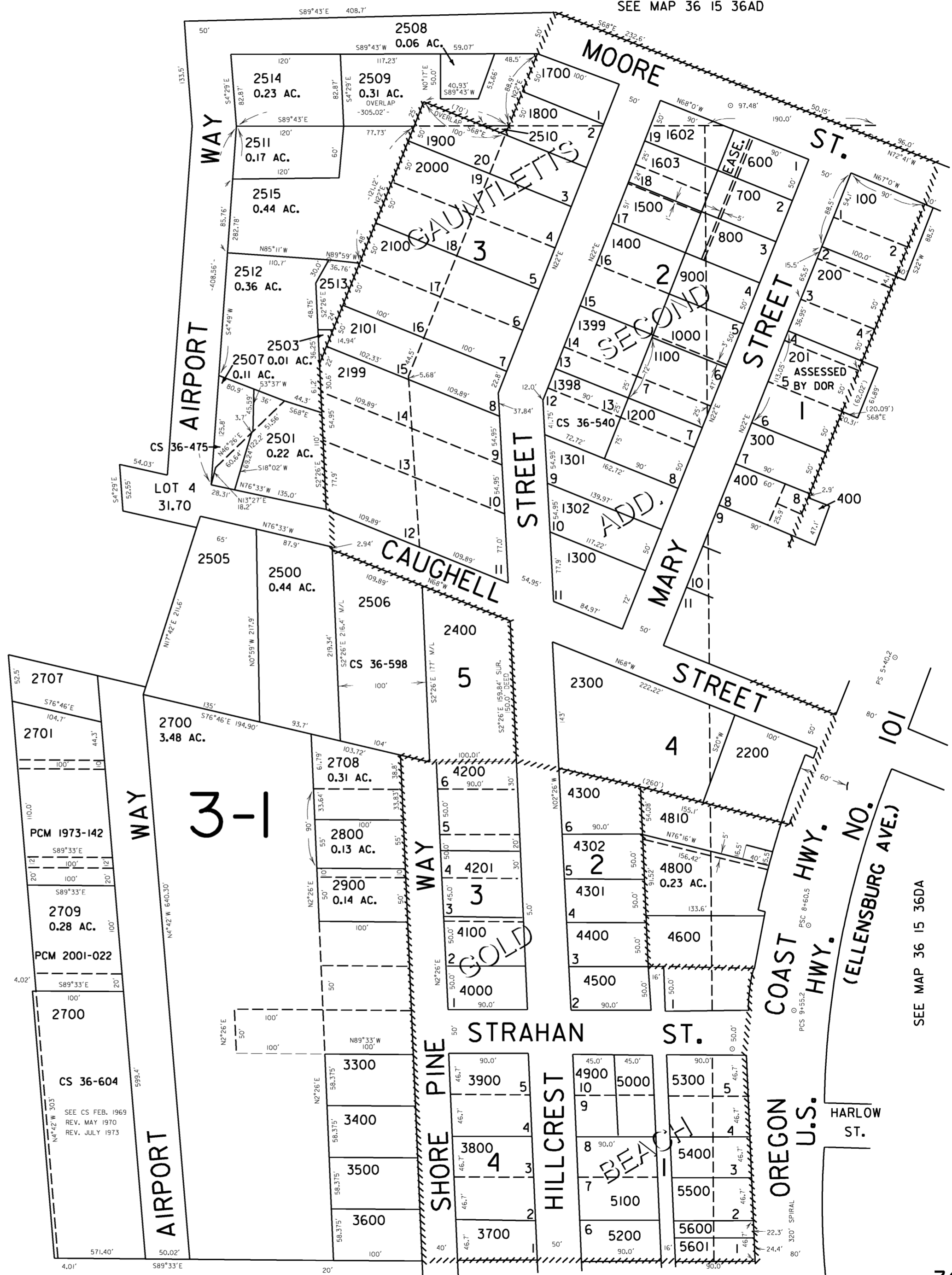


SEE MAP 36 15

SEE MAP 36 15 36AD

- CANCELLED NO.  
500  
1101  
1600  
1601  
2198  
2502  
2502M1  
2504  
2516  
2517  
2701A1  
2702 THRU 2706  
2801  
2802  
2901  
3000  
3100  
3200  
4700

SEE MAP 36 15 36



SEE MAP 36 15 36DA

SEE MAP 36 15 36DC

Revised  
3/25/2004, DBJ

36 15 36DB  
GOLD BEACH