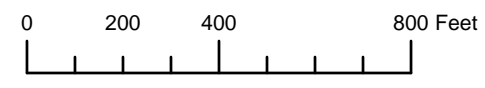


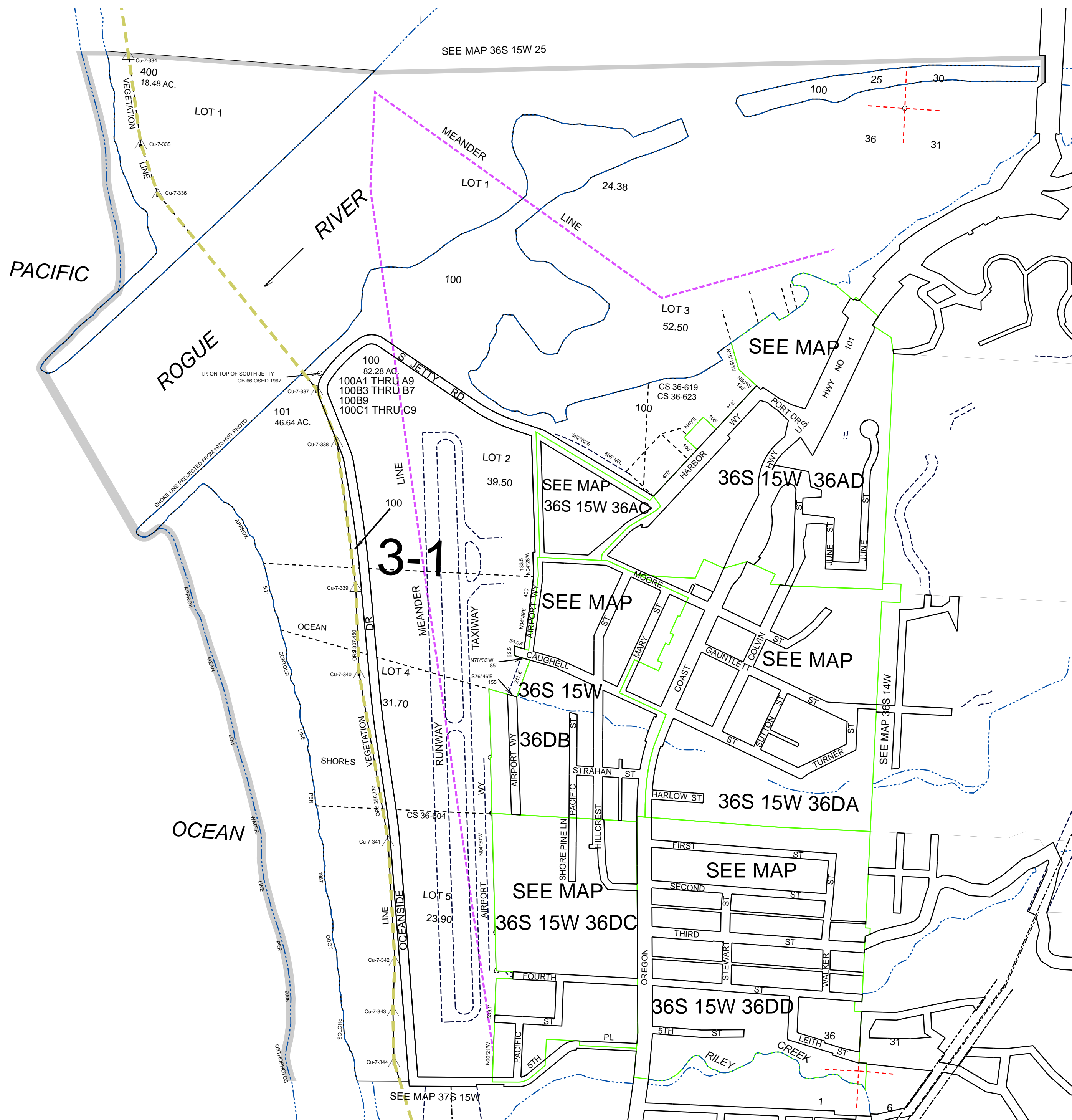
THIS MAP WAS PREPARED FOR ASSESSMENT PURPOSE ONLY



SECTION 36 T.36S. R.15W. W.M. CURRY COUNTY
1" = 400'

36S15W36
GOLD BEACH

- CANCELLED:
- 100B1
- 100B2
- 100B8
- 102
- 200
- 200A1
- 200A2
- 200A3
- 201
- 300



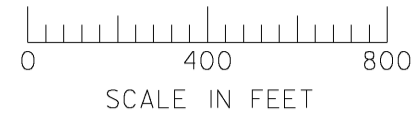
Revised: RAA
6/24/2010

GOLD BEACH
36S15W36

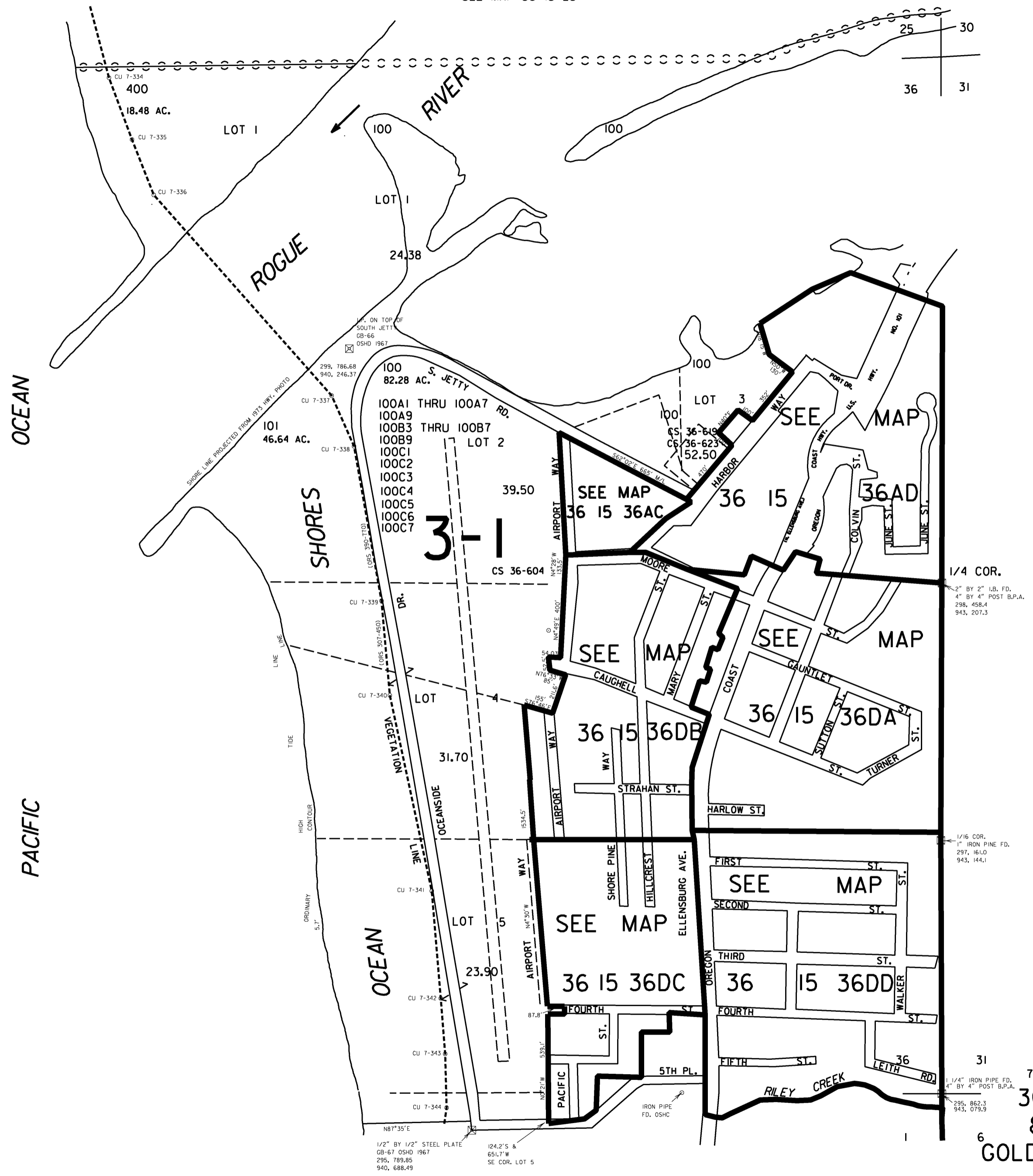
THIS MAP WAS PREPARED FOR ASSESSMENT PURPOSE ONLY

SECTION 36 T.36S. R.15W. W.M. CURRY COUNTY
1" = 400'

36 15 36 & INDEX GOLD BEACH



SEE MAP 36 15 25



- 100B1
- 100B2
- 100B8
- 102
- 200
- 200A1
- 200A2
- 200A3
- 201
- 300

SEE MAP 36 14

Revised 7/24/2006, RAA
36 15 36 & INDEX GOLD BEACH

SEE MAP 37 15

\$TIMES\$
\$DATES\$
\$FILE\$
\$USERNAME\$

THIS MAP WAS PREPARED FOR
ASSESSMENT PURPOSE ONLY

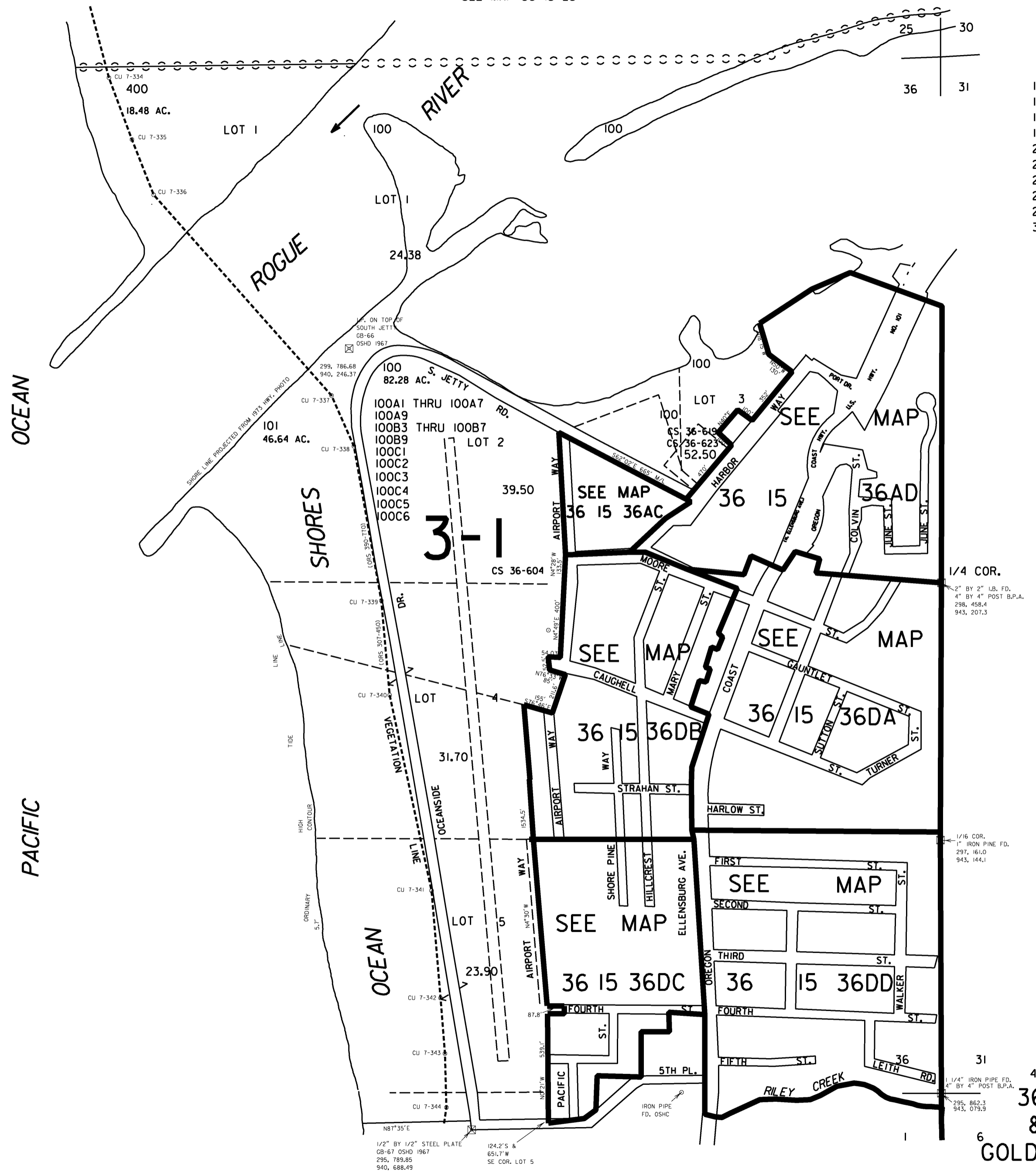
SECTION 36 T.36S. R.15W. W.M.
CURRY COUNTY

1" = 400'

36 15 36
& INDEX
GOLD BEACH



SEE MAP 36 15 25



- 100B1
- 100B2
- 100B8
- 102
- 200
- 200A1
- 200A2
- 200A3
- 201
- 300

SEE MAP 36 14

Revised
4/19/2006, DBJ
36 15 36
& INDEX
GOLD BEACH

SEE MAP 37 15

\$TIMES\$
\$DATES\$
\$FILE\$
\$USERNAME\$

THIS MAP WAS PREPARED FOR
ASSESSMENT PURPOSE ONLY

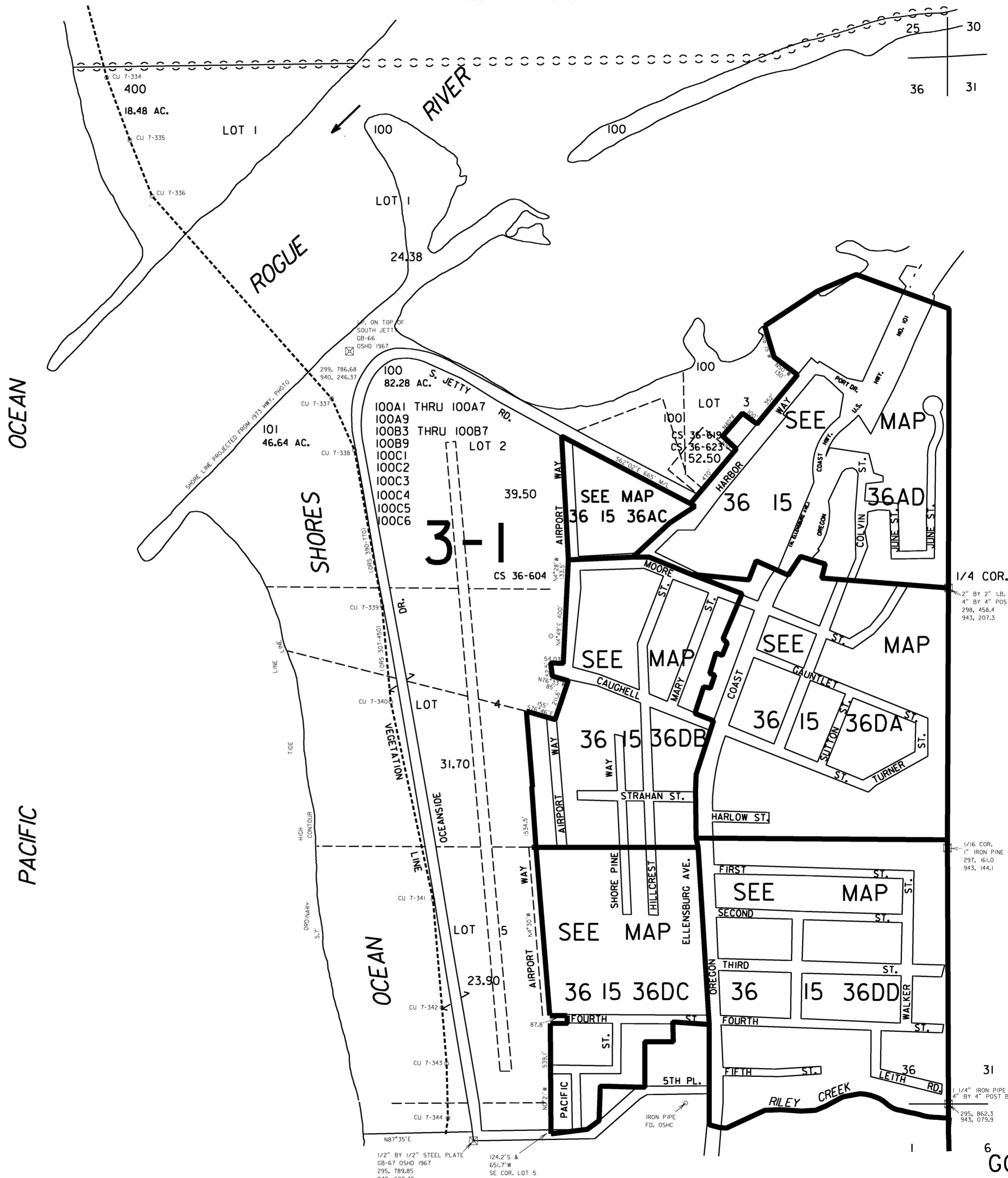
SECTION 36 T.36S. R.15W. W.M.
CURRY COUNTY

1" = 400'

36 15 36
& INDEX
GOLD BEACH



SEE MAP 36 15 25



- CANCELLED NO.
100B1
100B2
100B8
102
200
200A1
200A2
200A3
201
300

SEE MAP 36 14

Revised
4/21/2005, DBJ
36 15 36
& INDEX
GOLD BEACH

SEE MAP 37 15