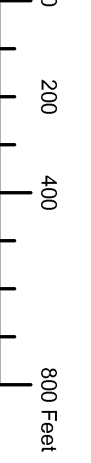
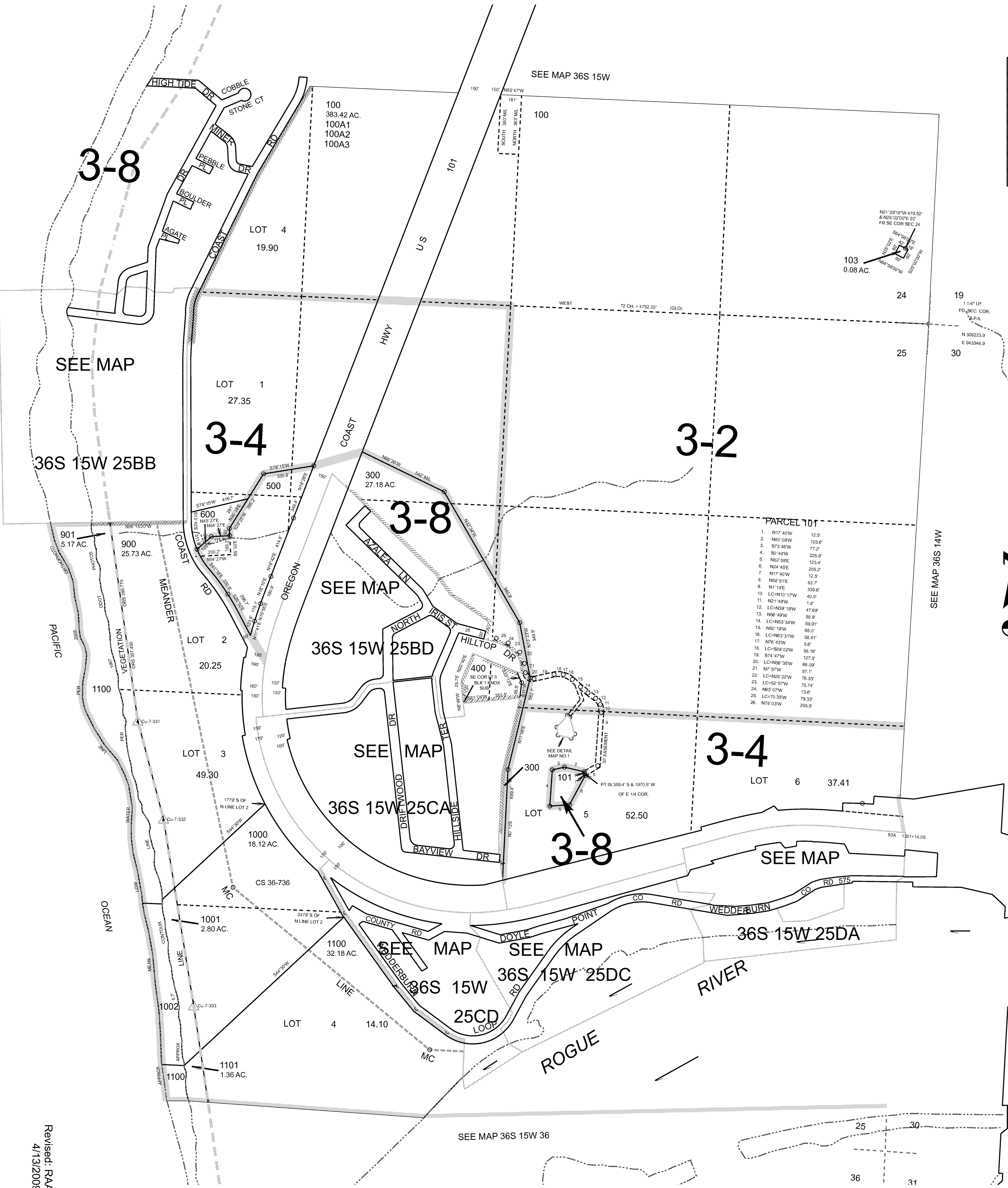


THIS MAP WAS PREPARED FOR ASSESSMENT PURPOSE ONLY.



SECTION 25 T.36S. R.15W. W.M.  
CURRY COUNTY

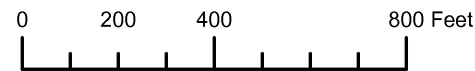
1" = 400'



PARCEL 101

1.	N17°40'W	12.9'
2.	N80°09'W	125.6'
3.	S73°46'W	77.2'
4.	S0°44'W	225.9'
5.	N82°39'E	123.4'
6.	N24°45'E	235.2'
7.	N17°40'W	12.9'
8.	N58°51'E	82.7'
9.	N1°44'E	335.6'
10.	LC-N39°19'W	47.69'
11.	N21°48'W	40.0'
12.	N21°48'W	1.8'
13.	N06°49'W	58.9'
14.	LC-N53°34'W	59.91'
15.	N50°19'W	68.0'
16.	LC-N63°31'W	58.41'
17.	N76°43'W	5.6'
18.	LC-S89°02'W	58.18'
19.	S14°47'W	127.5'
20.	LC-N56°30'W	60.09'
21.	N7°57'W	97.1'
22.	LC-N25°22'W	76.33'
23.	LC-S2°57'W	78.74'
24.	N83°07'W	78.33'
25.	LC-S70°35'W	13.6'
26.	N78°03'W	255.9'

THIS MAP WAS PREPARED FOR ASSESSMENT PURPOSE ONLY

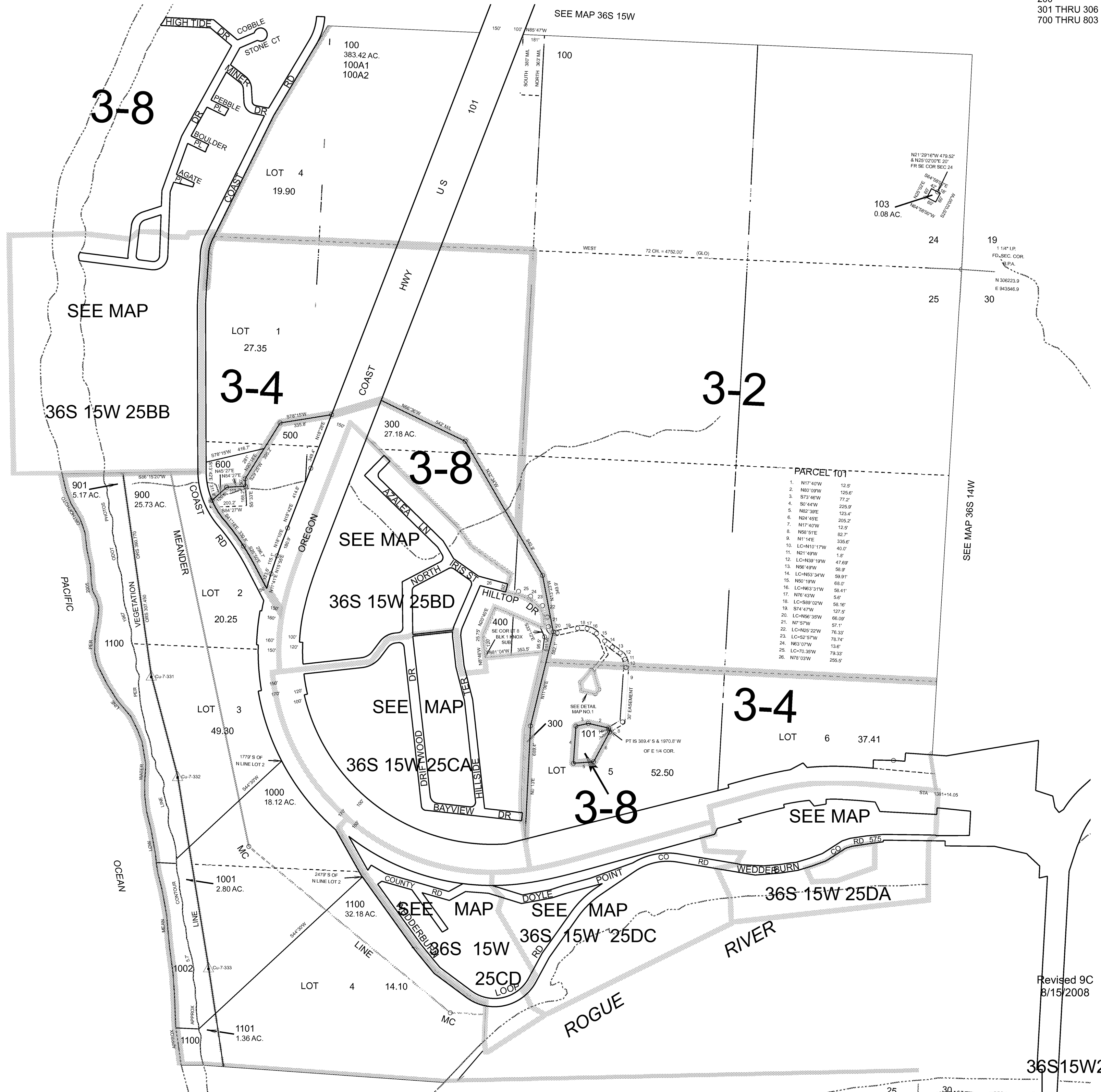


SECTION 25 T.36S. R.15W. W.M.  
CURRY COUNTY

1" = 400'

36S15W25

CANCELLED:  
200  
301 THRU 306  
700 THRU 803



Revised 9C  
8/15/2008

36S15W25

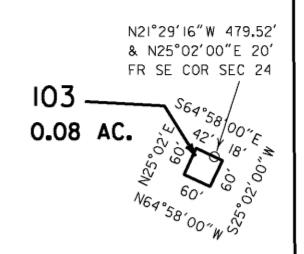
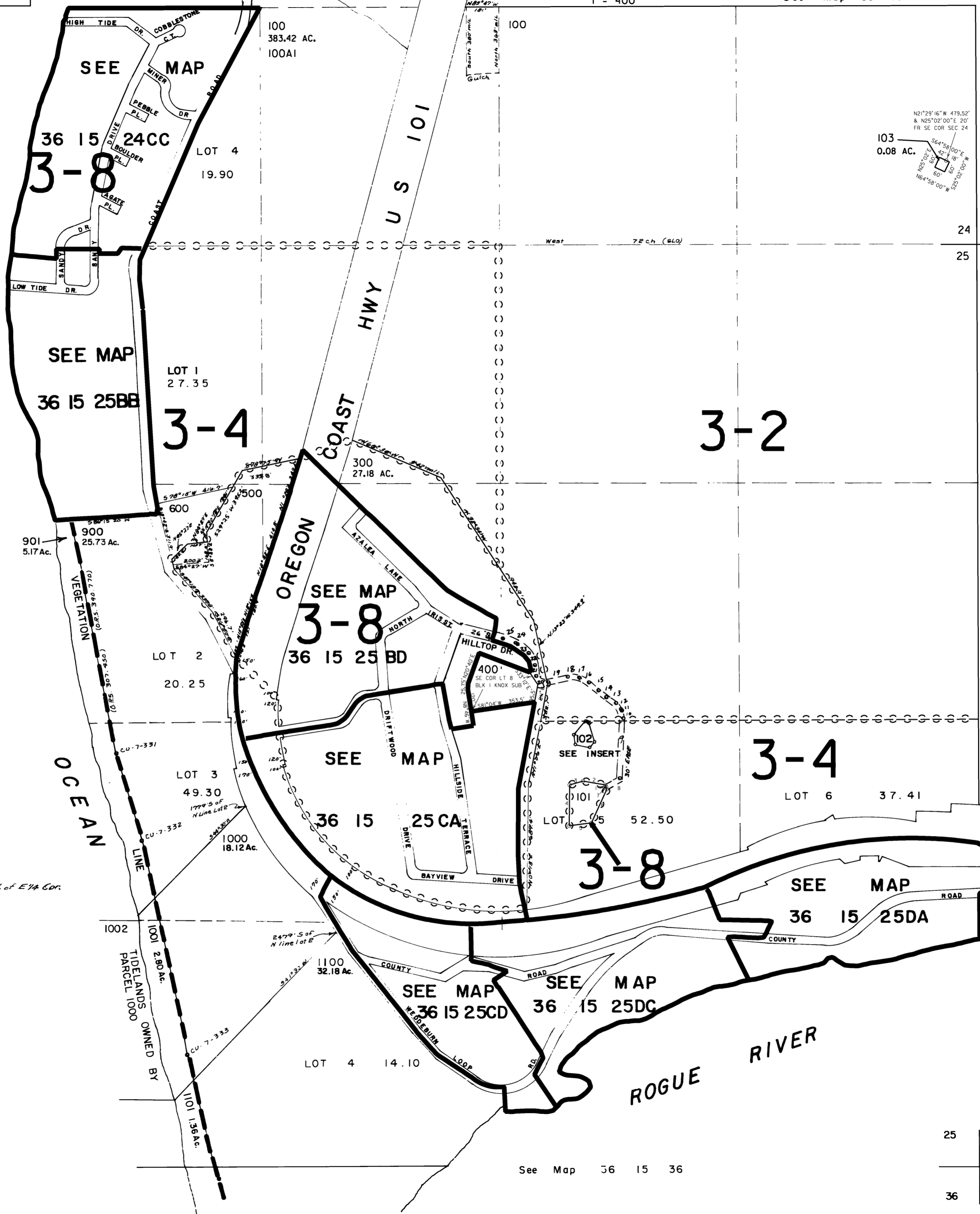
THIS MAP WAS PREPARED FOR ASSESSMENT PURPOSE ONLY

SI/2S1/2 SEC. 24 T.36S. R.15W. W.M.  
SECTION 25 T.36S. R.15W. W.M.  
CURRY COUNTY

36 15 25  
& INDEX

See Map 36 15

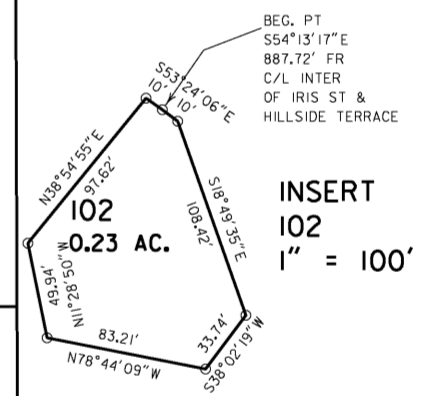
1" = 400'



CANCELLED NOS.  
200  
301 thru 306  
700 thru 803

19 1 1/4" I.P.  
FD. SEC. COR.  
B.P.A.  
N 306223.9  
E 943546.9

SEE MAP 36 14



INSERT  
102  
1" = 100'

- TAX LOT 101  
By 3894' S. 6 1970.8' W. of E1/4 Cor.
1. N. 174°40' N. 12.5'
  2. N. 80°09' W. 125.6'
  3. S. 73°46' W. 77.2'
  4. S. 0°42' W. 223.9'
  5. N. 81°39' E. 123.4'
  6. N. 24°45' E. 205.2'
  7. N. 17°40' W. 12.5'
  8. N. 38°57' E. 88.7'
  9. N. 17°01' E. 231.5'
  10. L.C. = N. 10°17' W. 82.0'
  11. N. 21°49' W. 1.8'
  12. L.C. = N. 39°19' N. 47.69'
  13. N. 56°49' W. 38.9'
  14. L.C. = N. 30°46' W. 59.9'
  15. N. 50°19' W. 68.0'
  16. L.C. = N. 63°31' W. 38.41'
  17. N. 76°43' W. 5.6'
  18. L.C. = S. 89°02' W. 58.16'
  19. S. 74°47' W. 127.5'
  20. L.C. = N. 56°35' W. 66.09'
  21. N. 7°57' W. 57.1'
  22. L.C. = N. 25°23' W. 76.33'
  23. L.C. = S. 55°17' W. 78.74'
  24. N. 63°07' W. 13.6'
  25. L.C. = 70.35' W. 79.33'
  26. N. 78°03' W. 255.5'

Revised  
2/2/2006, DBJ

36 15 25  
& INDEX

25	30
36	31

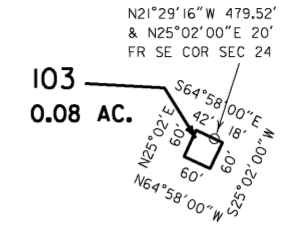
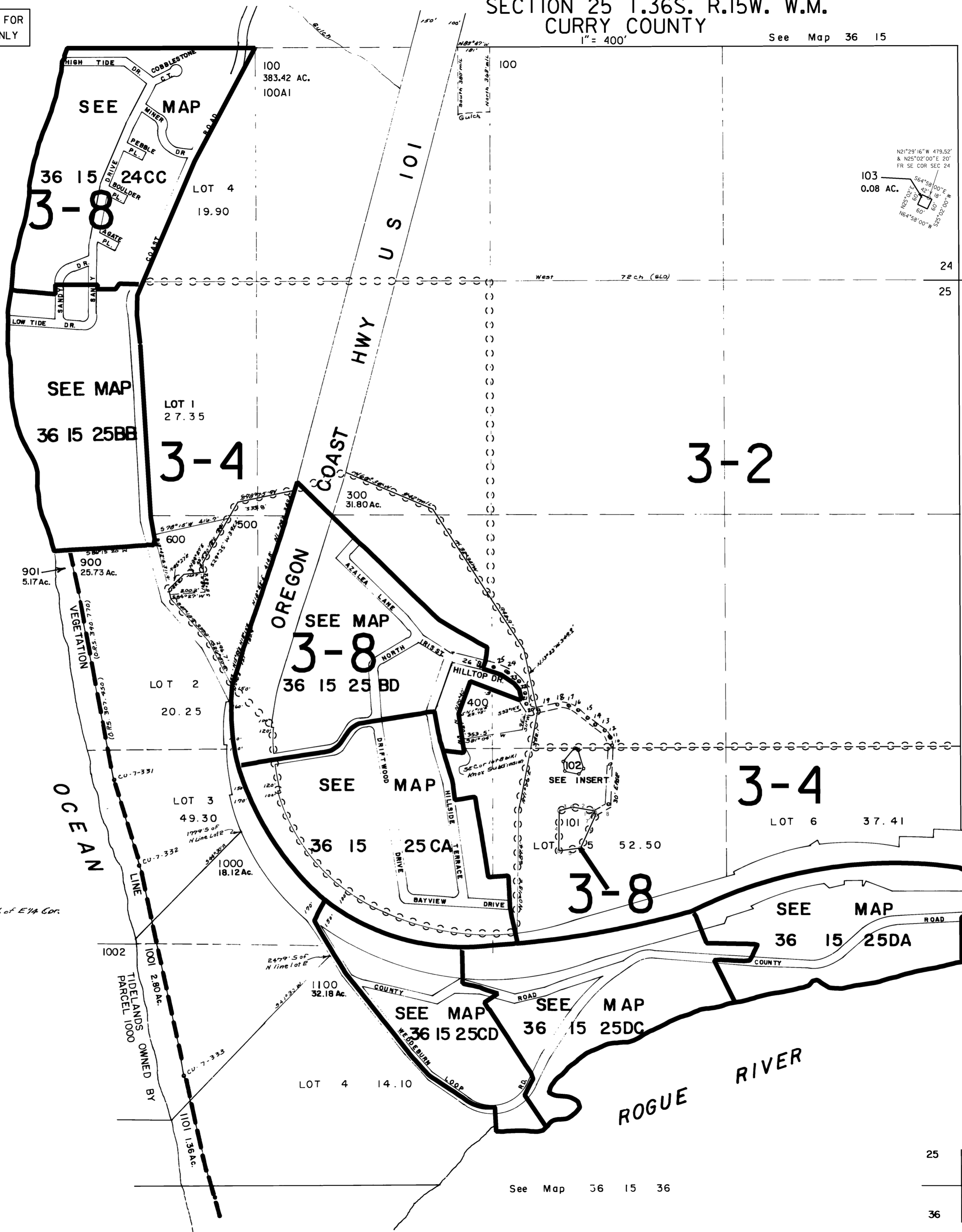
See Map 36 15 36

THIS MAP WAS PREPARED FOR ASSESSMENT PURPOSE ONLY

SI/2S1/2 SEC. 24 T.36S. R.15W. W.M.  
SECTION 25 T.36S. R.15W. W.M.  
CURRY COUNTY

See Map 36 15

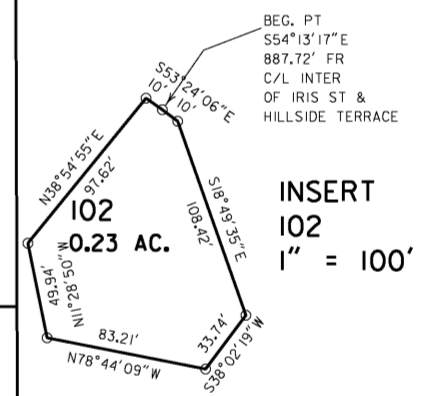
36 15 25  
& INDEX



CANCELLED NOS.  
200  
301 thru 306  
700 thru 803

19 1 1/4\"/>

SEE MAP 36 14



INSERT  
102  
1\"/>

- TAX LOT 101  
By 3894' S. 6 1970.8' W. of E1/4 Cor.
- 1. N. 174°40' N. 12.5'
  - 2. N. 80°09' W. 125.6'
  - 3. S. 73°46' W. 77.2'
  - 4. S. 0°42' W. 223.9'
  - 5. N. 81°39' E. 123.4'
  - 6. N. 24°45' E. 205.2'
  - 7. N. 17°40' W. 12.5'
  - 8. N. 38°57' E. 88.7'
  - 9. N. 17°01' E. 231.6'
  - 10. L.C. = N. 10°17' W. 82.0'
  - 11. N. 21°49' W. 1.8'
  - 12. L.C. = N. 39°19' N. 47.69'
  - 13. N. 56°49' W. 38.9'
  - 14. L.C. = N. 30°46' W. 59.9'
  - 15. N. 50°19' W. 68.0'
  - 16. L.C. = N. 63°31' W. 38.41'
  - 17. N. 76°43' W. 5.6'
  - 18. L.C. = S. 89°02' W. 58.16'
  - 19. S. 74°47' W. 127.5'
  - 20. L.C. = N. 56°35' W. 66.09'
  - 21. N. 7°57' W. 57.1'
  - 22. L.C. = N. 25°23' W. 76.33'
  - 23. L.C. = S. 55°17' W. 78.74'
  - 24. N. 63°07' W. 13.6'
  - 25. L.C. = 70.35' W. 79.33'
  - 26. N. 78°03' W. 255.5'

See Map 36 15 36

25	30
36	31

Revised  
8/16/2005, DBJ  
36 15 25  
& INDEX