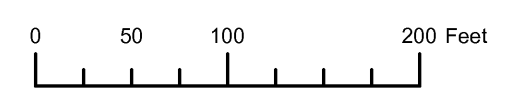


THIS MAP WAS PREPARED FOR ASSESSMENT PURPOSE ONLY



SW1/4 SW1/4 SECTION 24 T.36S. R.15W. W.M. CURRY COUNTY

1" = 100'

36S 15W 24CC

- CANCELLED NO.
- 3000
- 3001
- 3002
- 3003
- 3100
- 3100M1
- 3101
- 3300 THRU 3600
- 3700 THRU 4200M1
- 3800
- 4401
- 4700
- 6600
- 7501
- 7300 THRU 7700M1
- 7601
- 7800
- 7800M1
- 7900 THRU 8000M1



SEE MAP 36S 15W 25BB

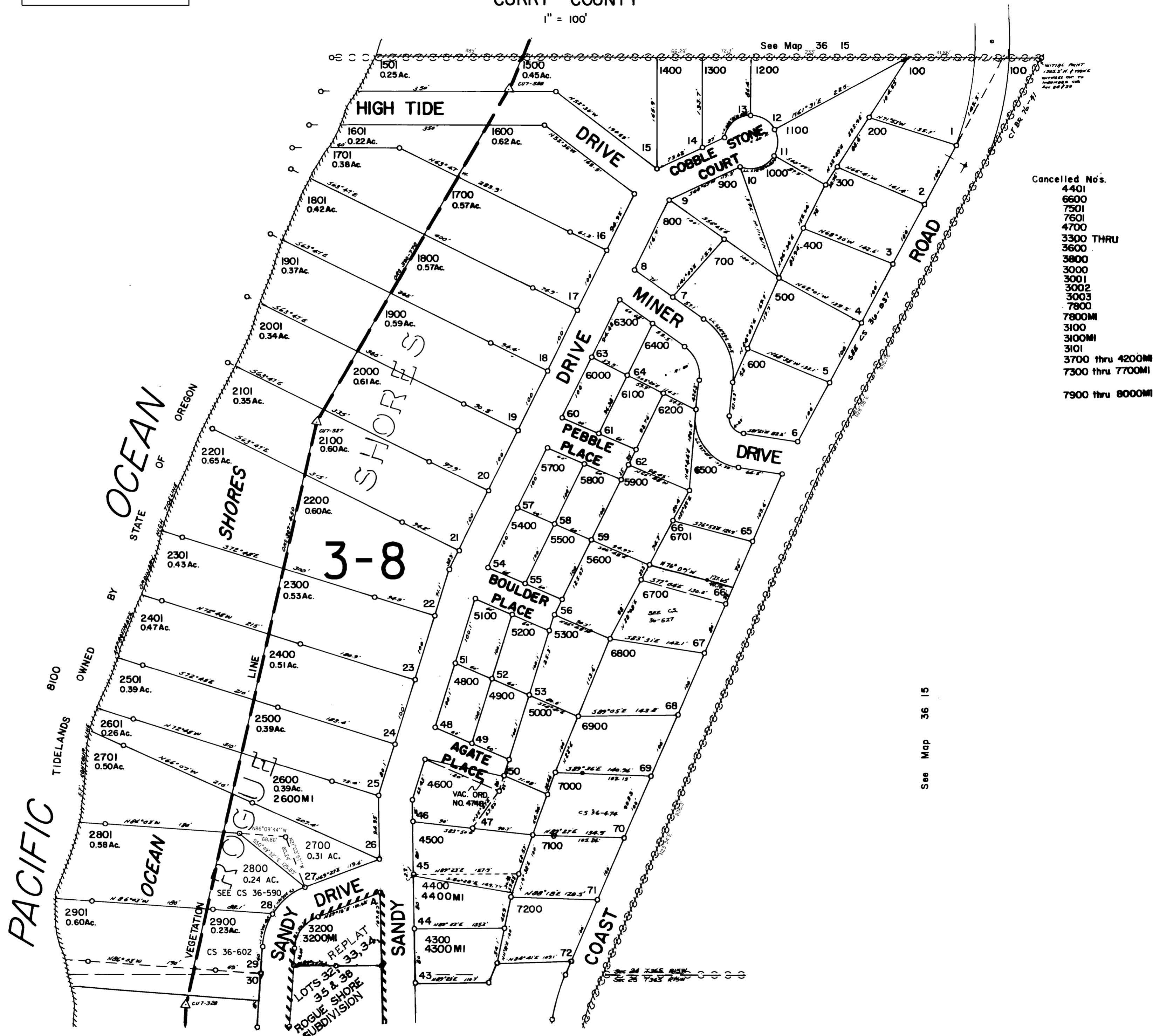
SEE MAP 36S 15W

REPLAT LOTS 32, 33, 34, 35 & 36

THIS MAP WAS PREPARED FOR  
ASSESSMENT PURPOSE ONLY

SW 1/4 SW1/4 SEC 24 T36S R15W W.M.  
CURRY COUNTY  
1" = 100'

36 15 24CC



- Cancelled Nos.
- 4401
  - 6600
  - 7501
  - 7601
  - 4700
  - 3300 THRU
  - 3600
  - 3800
  - 3000
  - 3001
  - 3002
  - 3003
  - 7800
  - 7800MI
  - 3100
  - 3100MI
  - 3101
  - 3700 thru 4200MI
  - 7300 thru 7700MI
  - 7900 thru 8000MI

See Map 36 15

SEE MAP 36 15 25BB

Revised  
6/14/2005, DBJ  
36 15 24CC