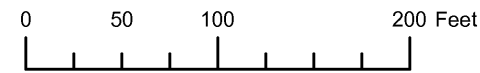


THIS MAP WAS PREPARED FOR ASSESSMENT PURPOSE ONLY

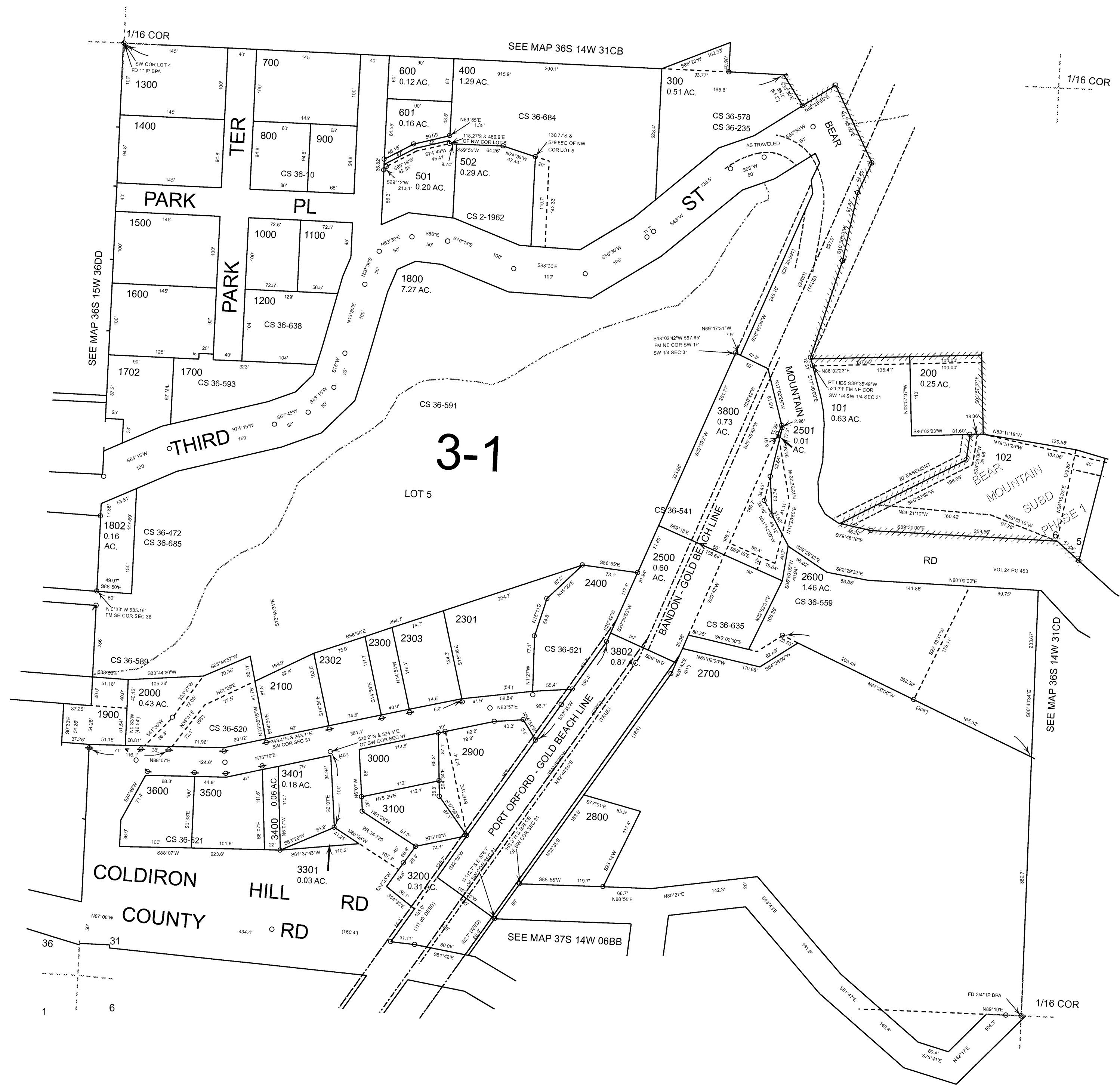


S.W.1/4 S.W.1/4 SEC.31 T.36S. R.14W. W.M. CURRY COUNTY 1" = 100'

36S14W31CC GOLD BEACH

CANCELLED:

- 100
- 401
- 500
- 1601
- 1701
- 1800T1
- 1801
- 1803
- 2200
- 2601
- 3300
- 3700
- 3801
- 3900



Revised: RAA 1/4/2012

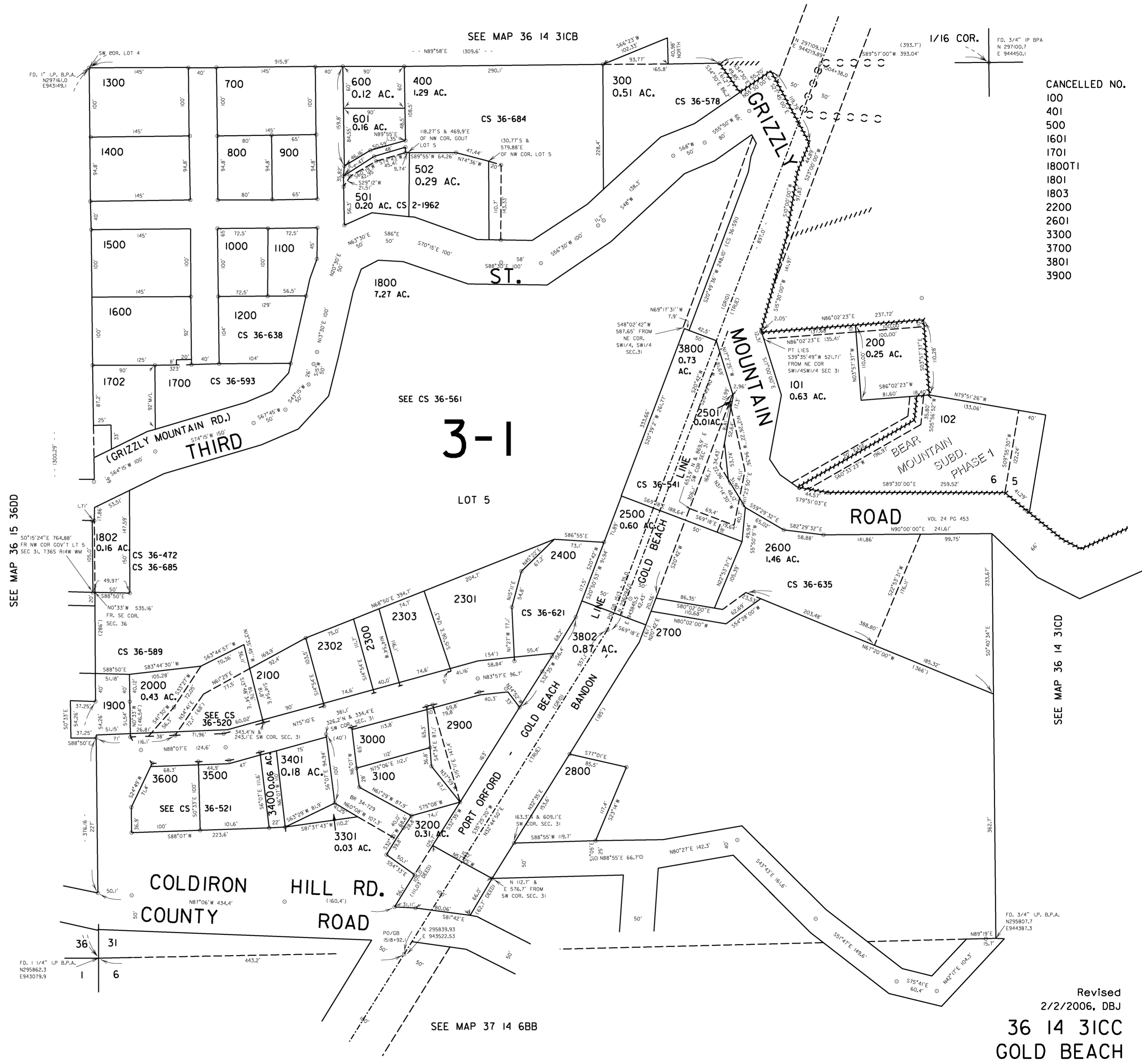
GOLD BEACH 36S14W31CC

THIS MAP WAS PREPARED FOR  
ASSESSMENT PURPOSE ONLY

SW1/4 SW1/4 SEC. 31 T.36S. R.14W. W.M.  
CURRY COUNTY

36 14 31CC  
GOLD BEACH

1" = 100'



- CANCELLED NO.  
100  
401  
500  
1601  
1701  
1800T1  
1801  
1803  
2200  
2601  
3300  
3700  
3801  
3900

SEE MAP 36 14 31CD

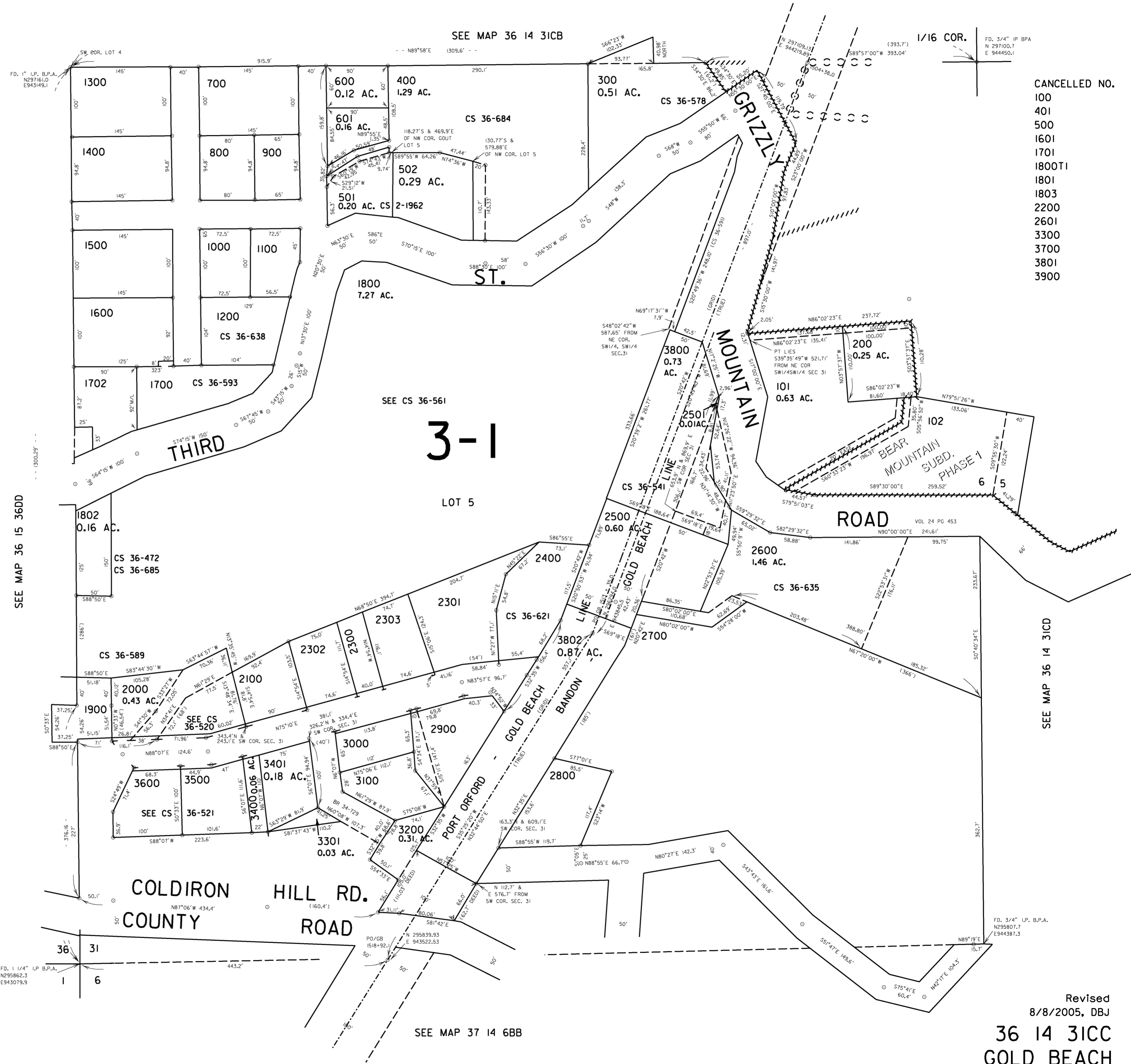
Revised  
2/2/2006, DBJ  
36 14 31CC  
GOLD BEACH

THIS MAP WAS PREPARED FOR ASSESSMENT PURPOSE ONLY

SW1/4 SW1/4 SEC. 31 T.36S. R.14W. W.M. CURRY COUNTY

36 14 31CC GOLD BEACH

1" = 100'



- CANCELLED NO.
- 100
  - 401
  - 500
  - 1601
  - 1701
  - 1800T1
  - 1801
  - 1803
  - 2200
  - 2601
  - 3300
  - 3700
  - 3801
  - 3900

SEE MAP 36 14 31CD

Revised 8/8/2005, DBJ  
36 14 31CC GOLD BEACH