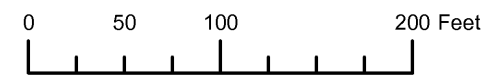


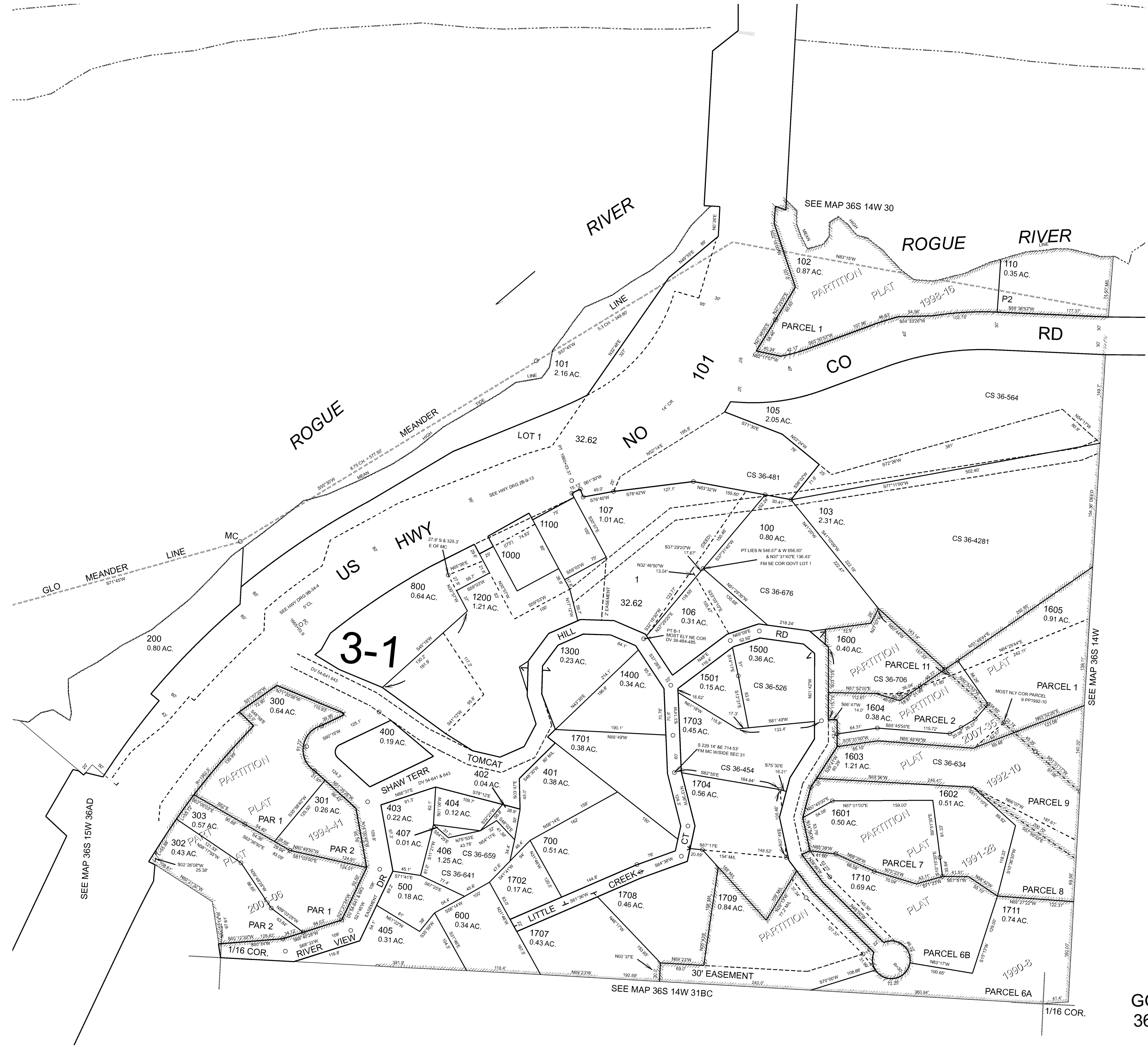
THIS MAP WAS PREPARED FOR ASSESSMENT PURPOSE ONLY



N.W.1/4 N.W.1/4 SEC.31 T.36S. R.14W. W.M.  
CURRY COUNTY  
1" = 100'

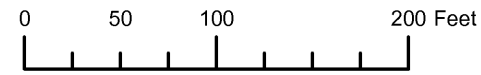
36S14W31BB  
GOLD BEACH

- CANCELLED:
- 104
  - 108
  - 109
  - 408
  - 409
  - 900
  - 1201
  - 1700
  - 1705
  - 1706
  - 1712



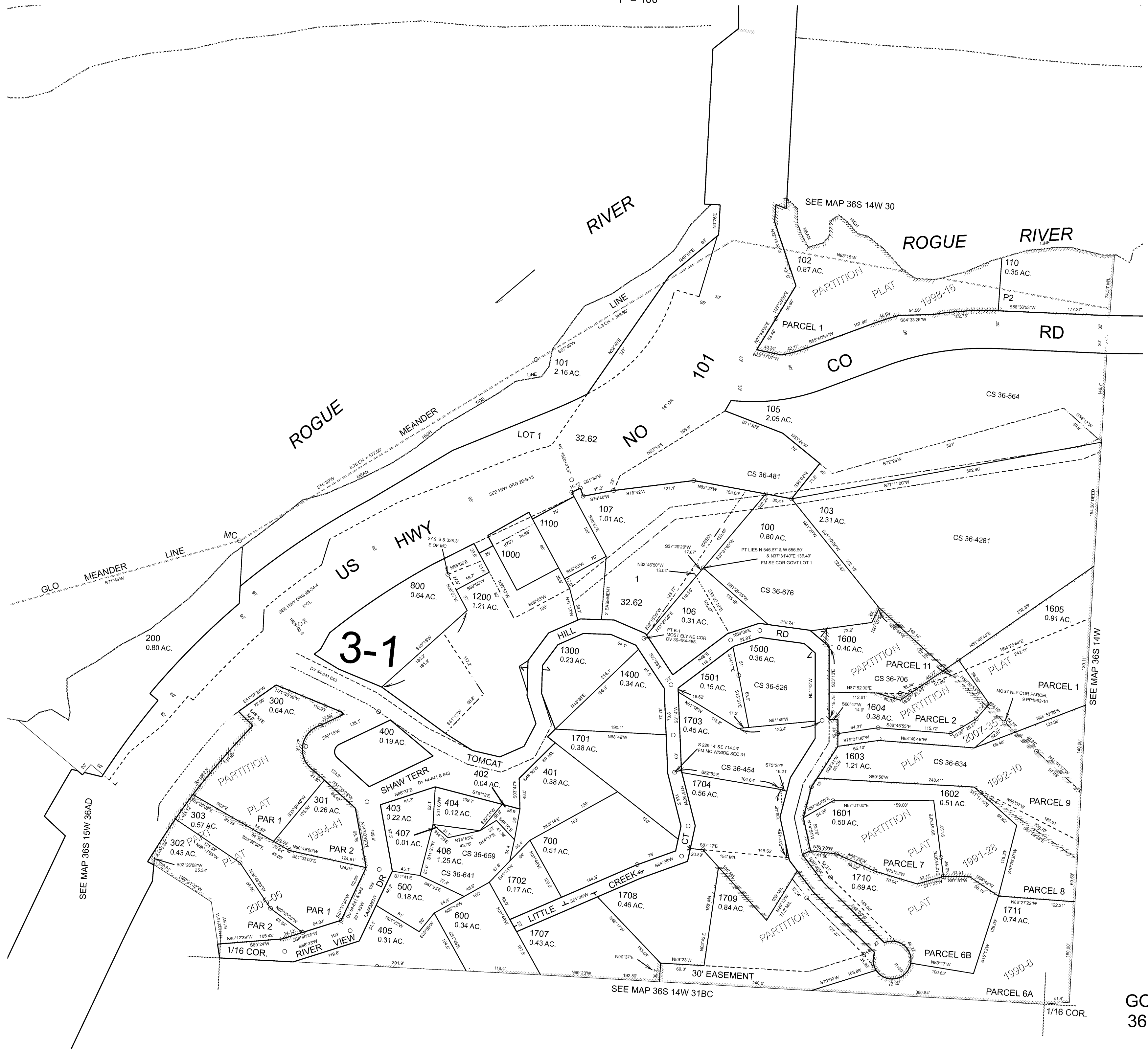
Revised RAA  
5/27/2008  
**GOLD BEACH**  
36S14W31BB

THIS MAP WAS PREPARED FOR ASSESSMENT PURPOSE ONLY



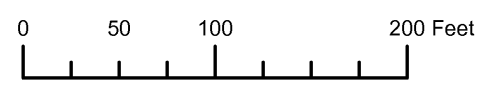
N.W.1/4 N.W.1/4 SEC.31 T.36S. R.14W. W.M.  
CURRY COUNTY  
1" = 100'

36S14W31BB  
GOLD BEACH



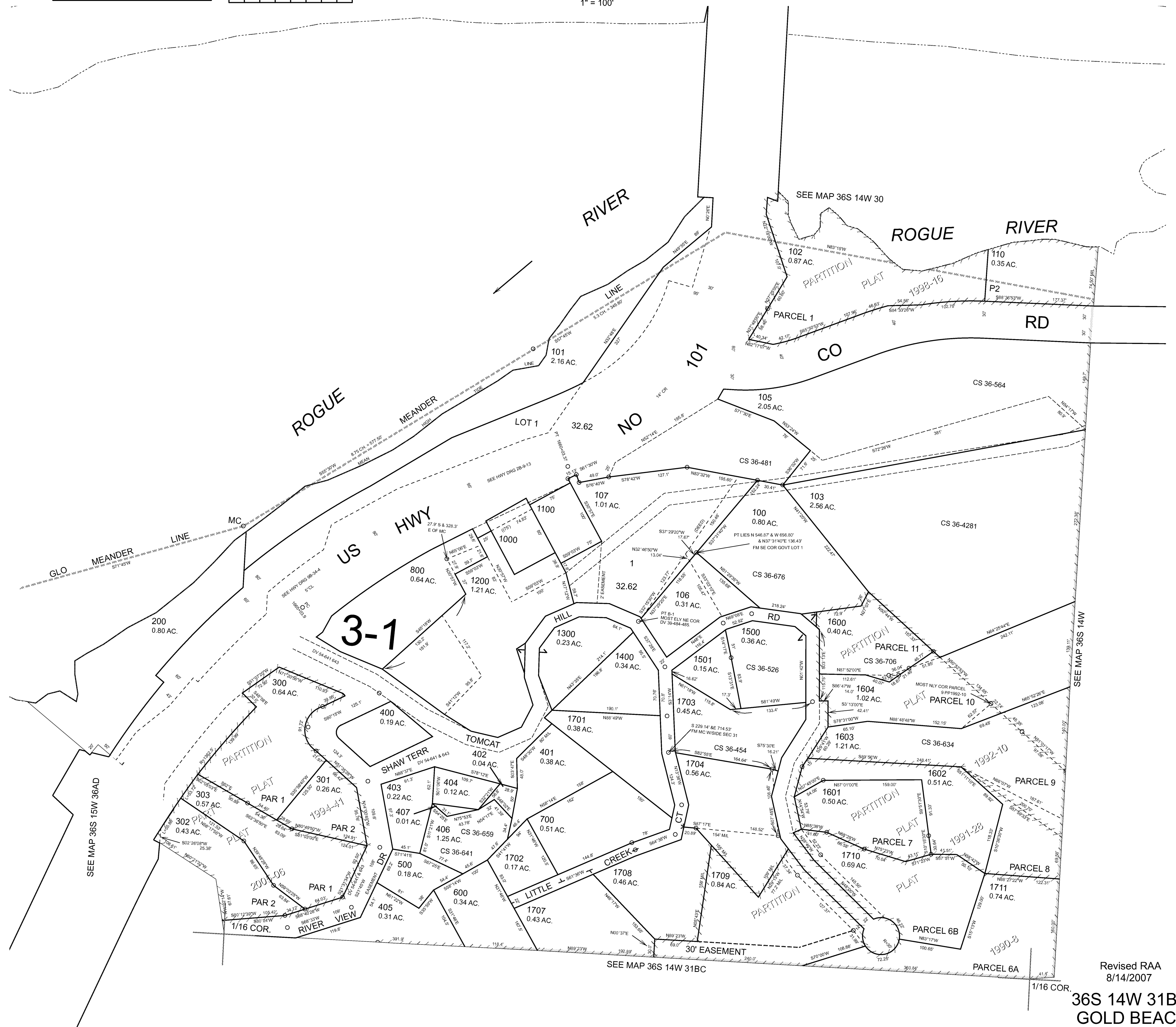
Revised RAA  
5/27/2008  
GOLD BEACH  
36S14W31BB

THIS MAP WAS PREPARED FOR ASSESSMENT PURPOSE ONLY



NW1/4 NW1/4 SECTION 31 T.36S. R.14W. W.M. CURRY COUNTY  
1" = 100'

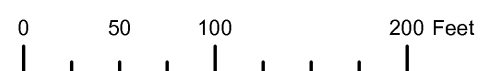
36S 14W 31BB GOLD BEACH



Revised RAA  
8/14/2007

36S 14W 31BB GOLD BEACH

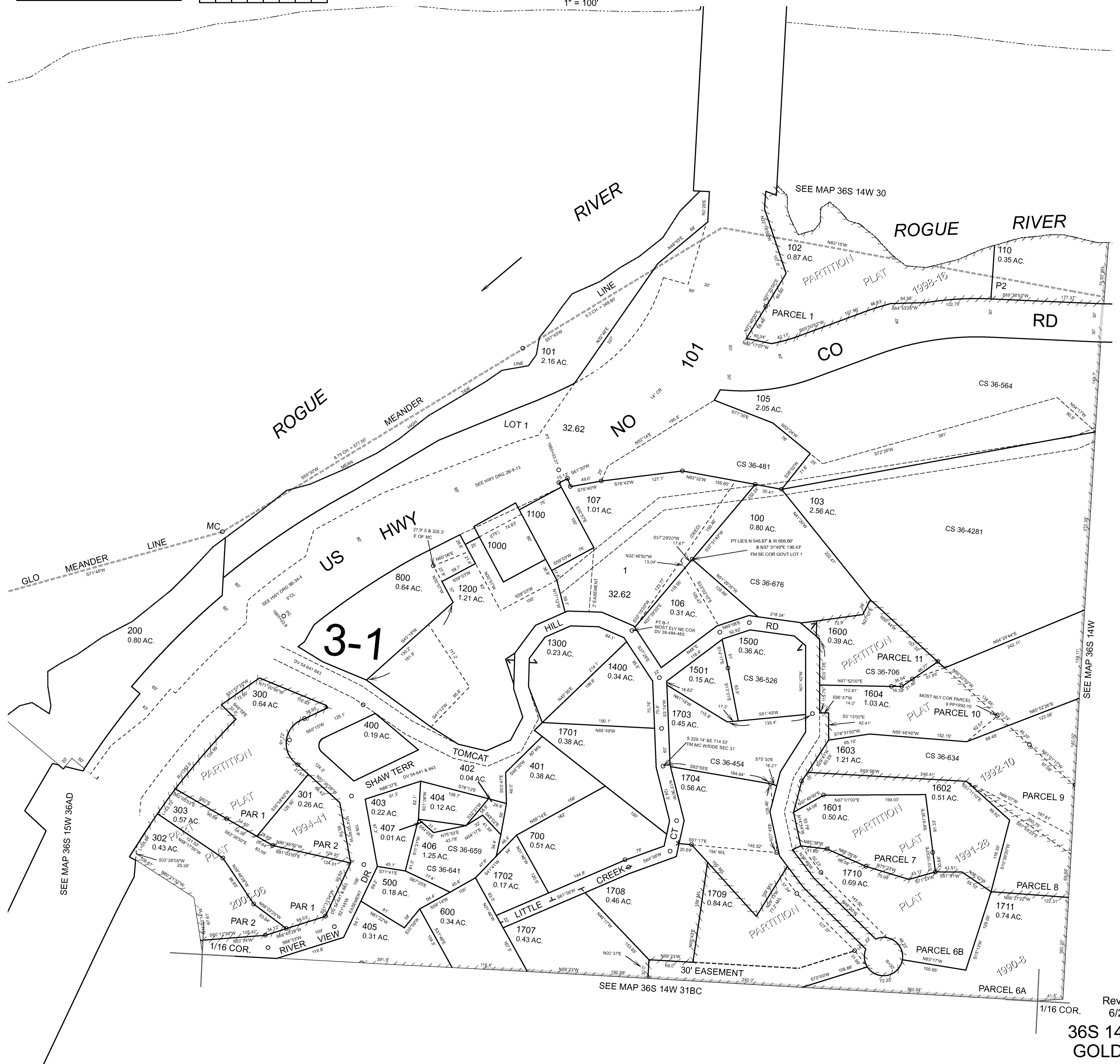
THIS MAP WAS PREPARED FOR ASSESSMENT PURPOSE ONLY



NW1/4 NW1/4 SECTION 31 T.36S. R.14W. W.M. CURRY COUNTY

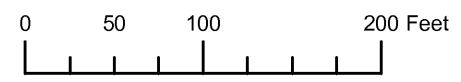
1" = 100'

36S 14W 31BB GOLD BEACH



Revised RAA 6/25/2007  
36S 14W 31BB GOLD BEACH

THIS MAP WAS PREPARED FOR ASSESSMENT PURPOSE ONLY



NW1/4 NW1/4 SECTION 31 T.36S. R.14W. W.M. CURRY COUNTY  
1" = 100'

36S 14W 31BB GOLD BEACH



Revised RAA 2/5/2007

36S 14W 31BB GOLD BEACH

THIS MAP WAS PREPARED FOR  
ASSESSMENT PURPOSE ONLY

NW1/4 NW1/4 SEC. 31 T.36S. R.14W. W.M.  
CURRY COUNTY

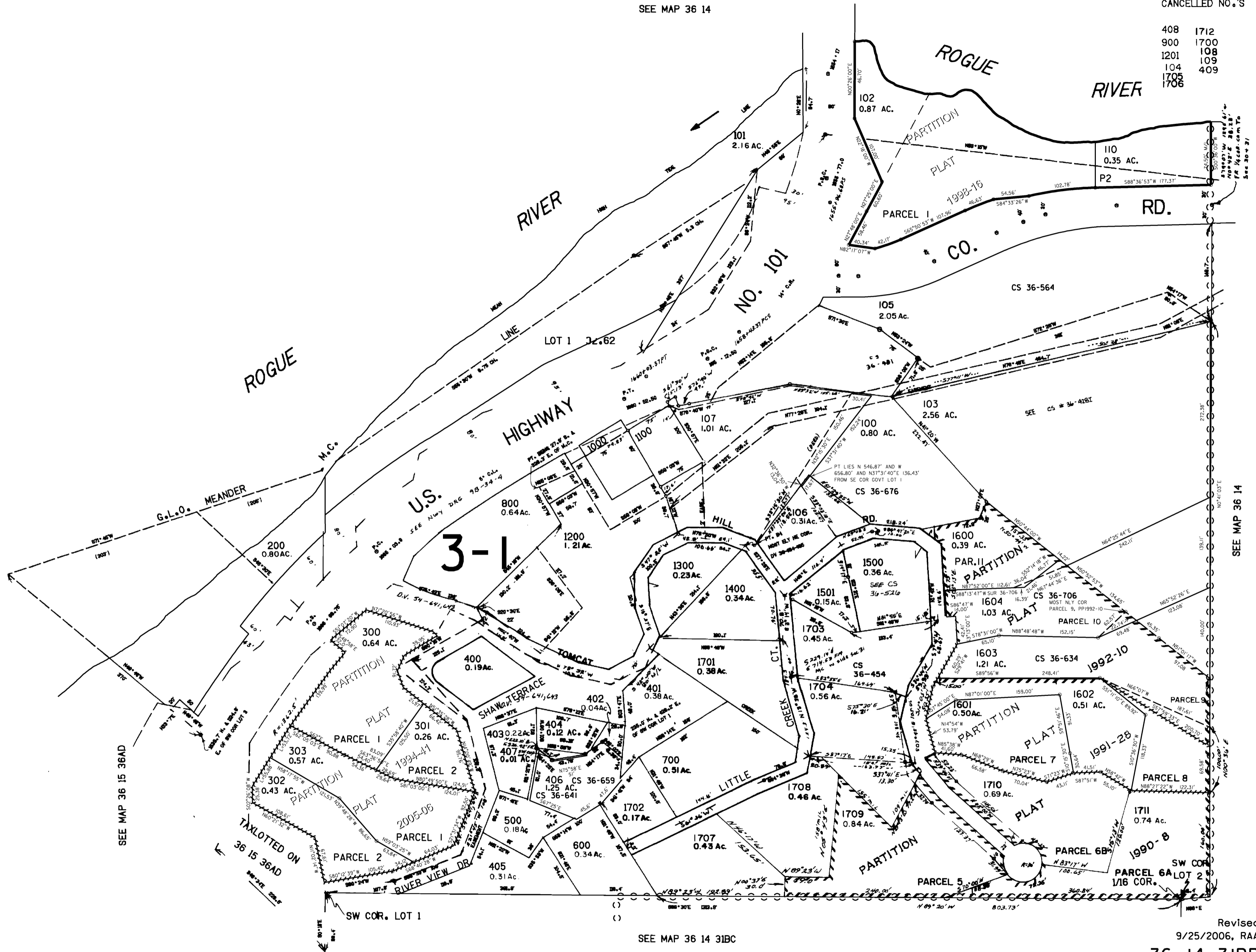
36 14 31BB  
GOLD BEACH

1"=100'

SEE MAP 36 14

CANCELLED NO.'S

408	1712
900	1700
1201	108
104	109
1705	409
1706	



SEE MAP 36 14 31BB

Revised  
9/25/2006, RAA

36 14 31BB  
GOLD BEACH

THIS MAP WAS PREPARED FOR  
ASSESSMENT PURPOSE ONLY

NW1/4 NW1/4 SEC. 31 T.36S. R.14W. W.M.  
CURRY COUNTY

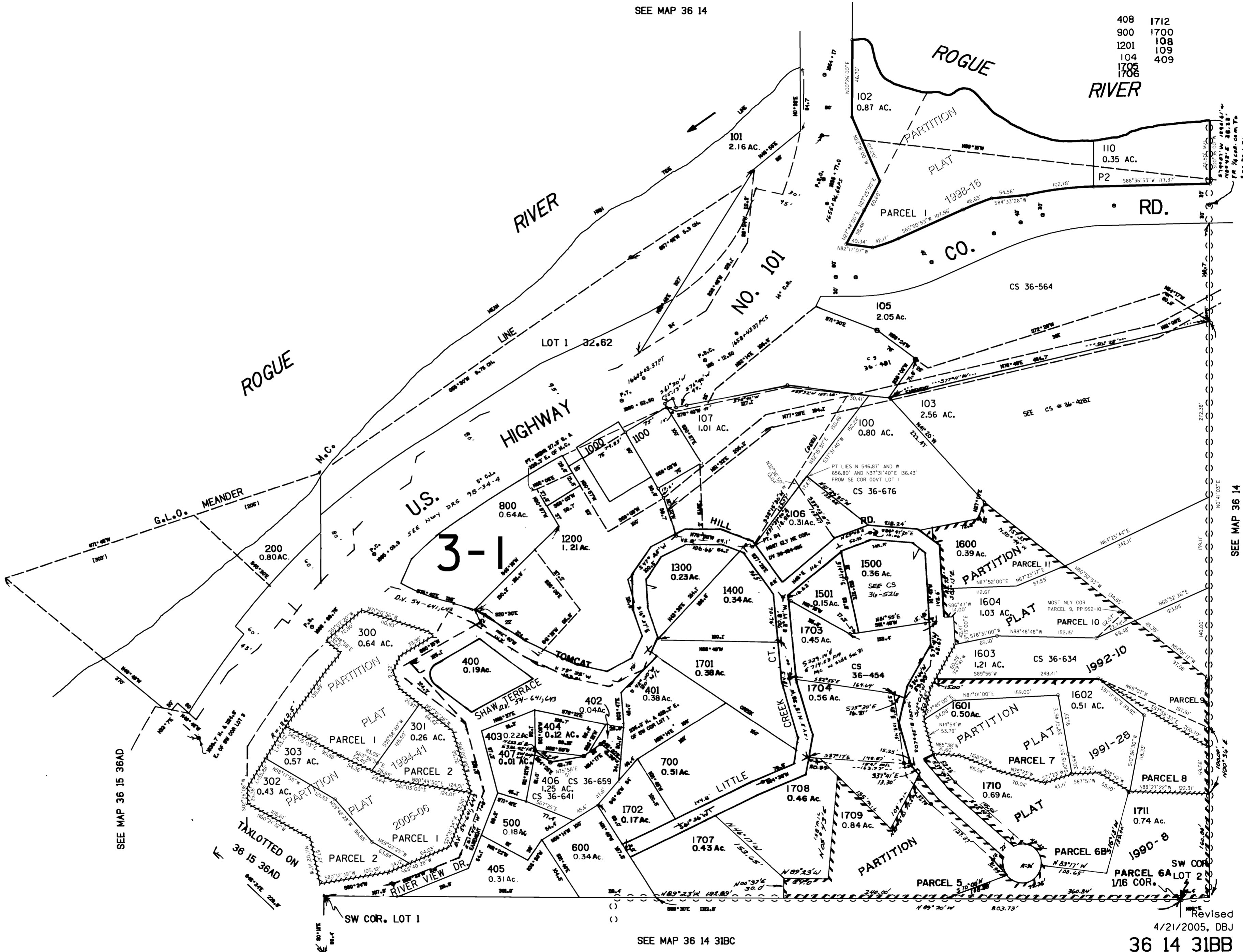
36 14 31BB  
GOLD BEACH

1"=100'

SEE MAP 36 14

CANCELLED NO.'S

- 408 1712
- 900 1700
- 1201 108
- 104 109
- 1705 409
- 1706



SEE MAP 36 14

Revised  
4/21/2005, DBJ

36 14 31BB  
GOLD BEACH