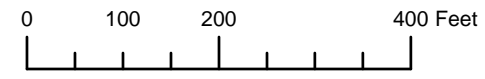


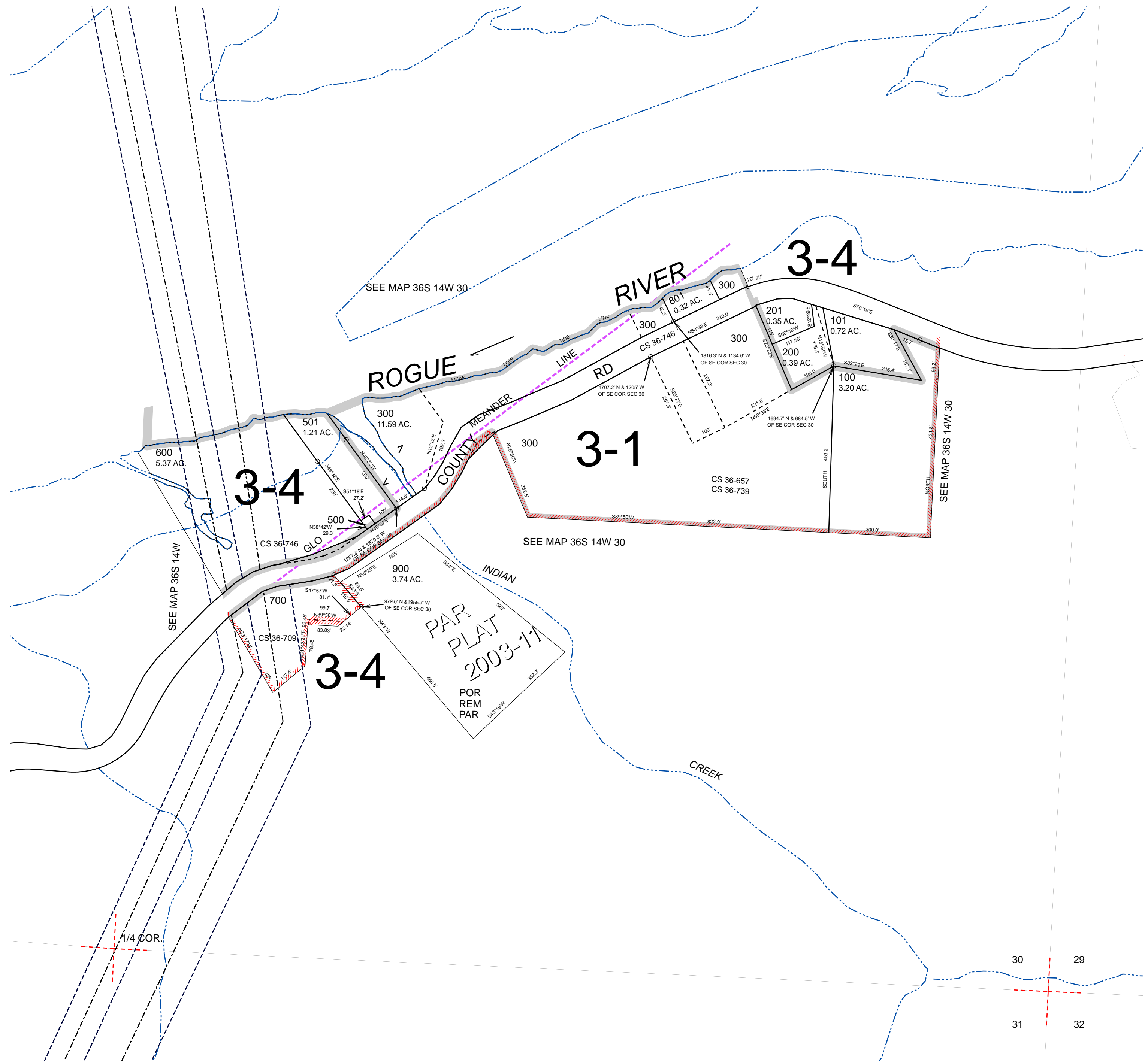
THIS MAP WAS PREPARED FOR ASSESSMENT PURPOSE ONLY



S.E. 1/4 SEC. 30 T. 36S. R. 14W. W.M.
CURRY COUNTY
1" = 200'

36S14W30D

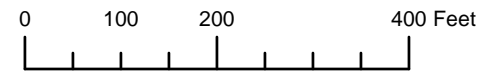
CANCELLED:
400
800



Revised: RAA
8/25/2010

36S14W30D

THIS MAP WAS PREPARED FOR ASSESSMENT PURPOSE ONLY

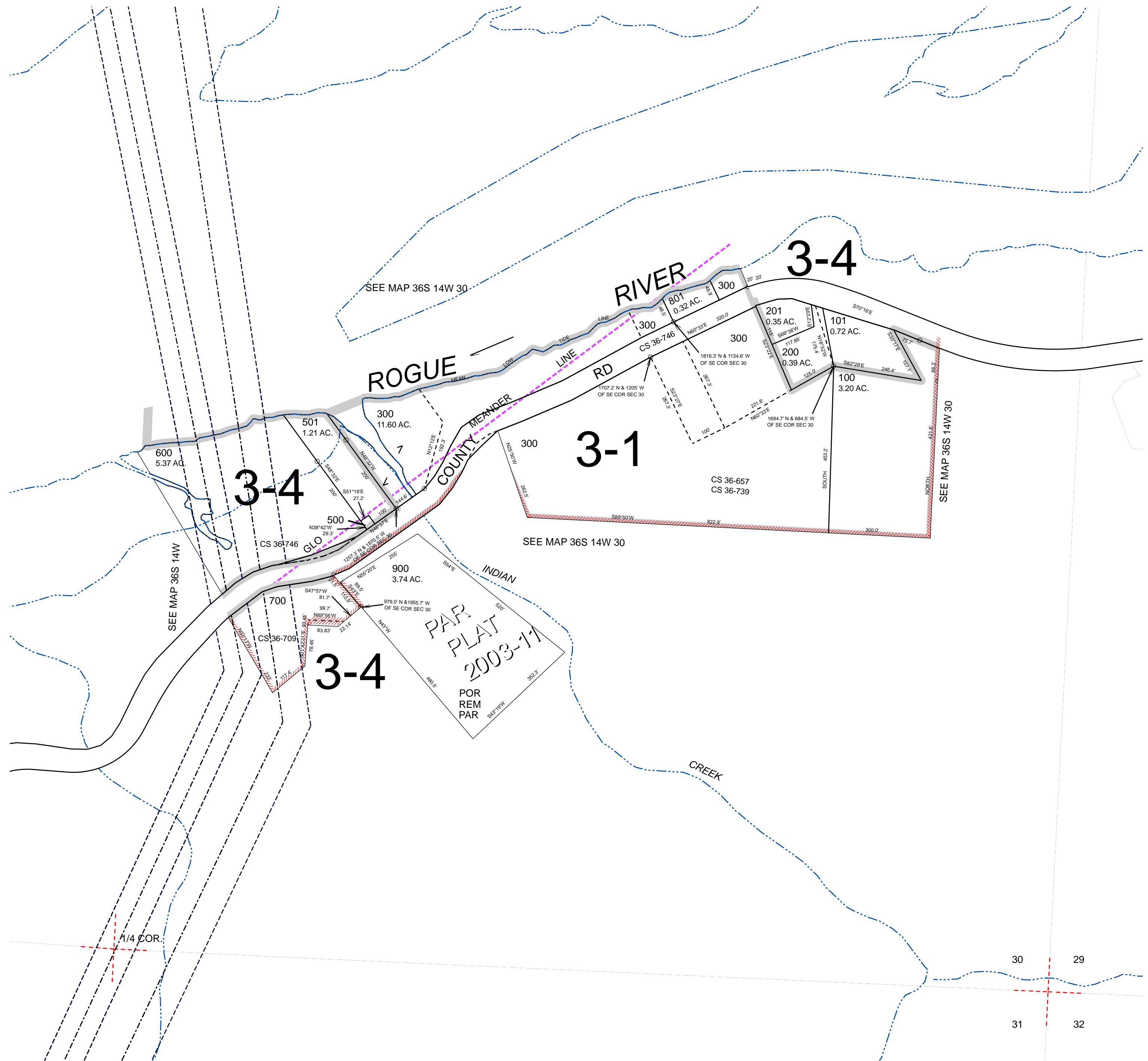


S.E.1/4 SEC.30 T.36S. R.14W. W.M.
CURRY COUNTY

1" = 200'

36S14W30D

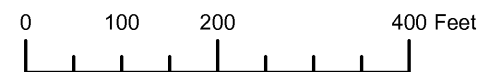
CANCELLED:
400
800



Revised: RAA
8/24/2010

36S14W30D

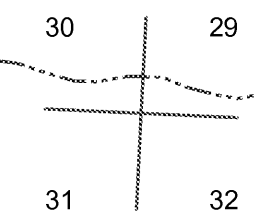
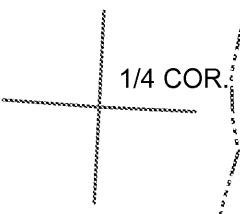
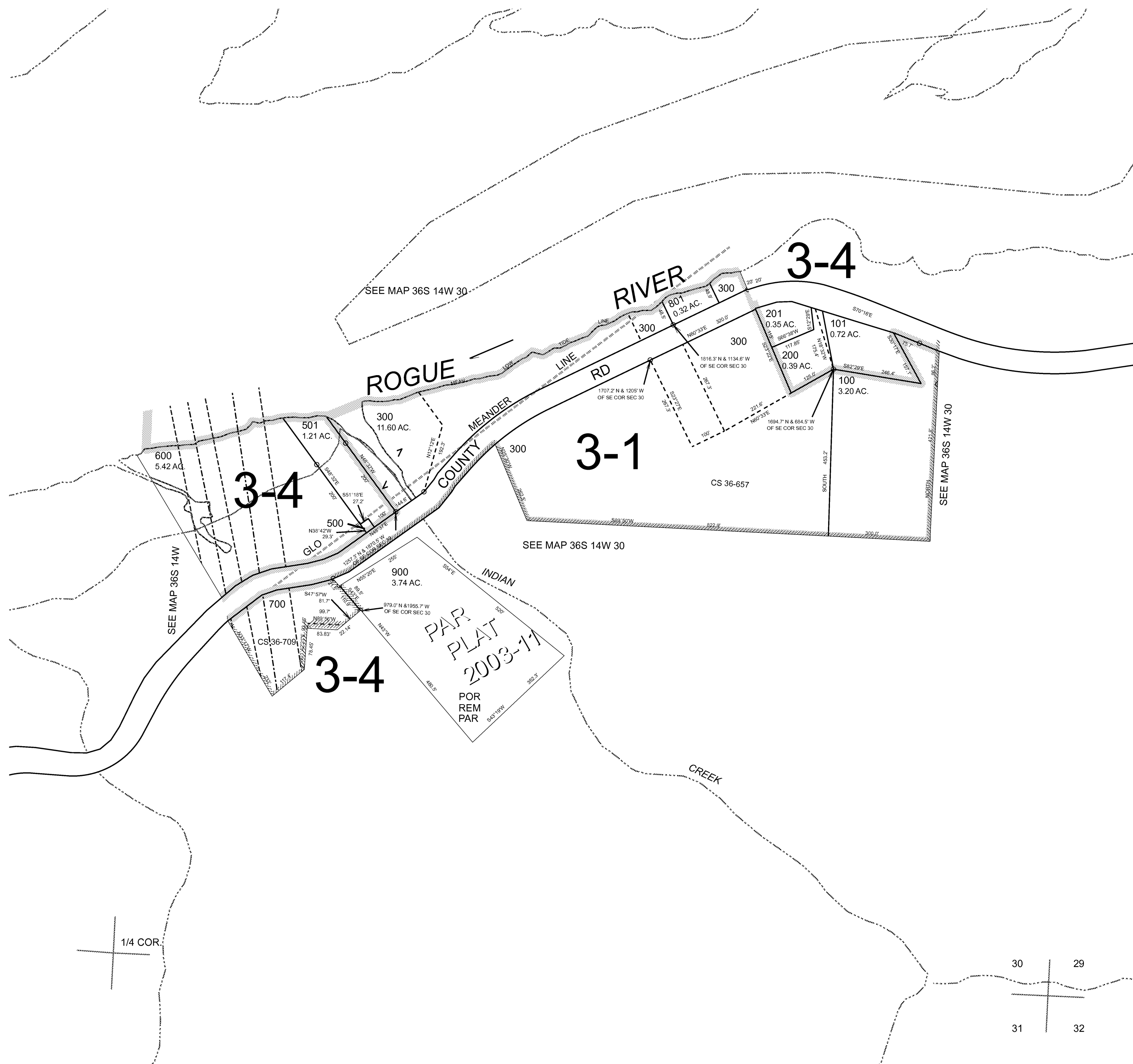
THIS MAP WAS PREPARED FOR ASSESSMENT PURPOSE ONLY



S.E. 1/4 SEC. 30 T.36S. R.14W. W.M.
CURRY COUNTY
1" = 200'

36S14W30D

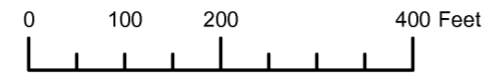
CANCELLED:
400
800



Revised MRT
10/08/2008

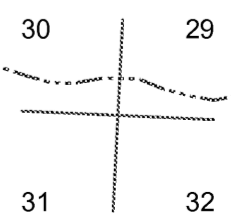
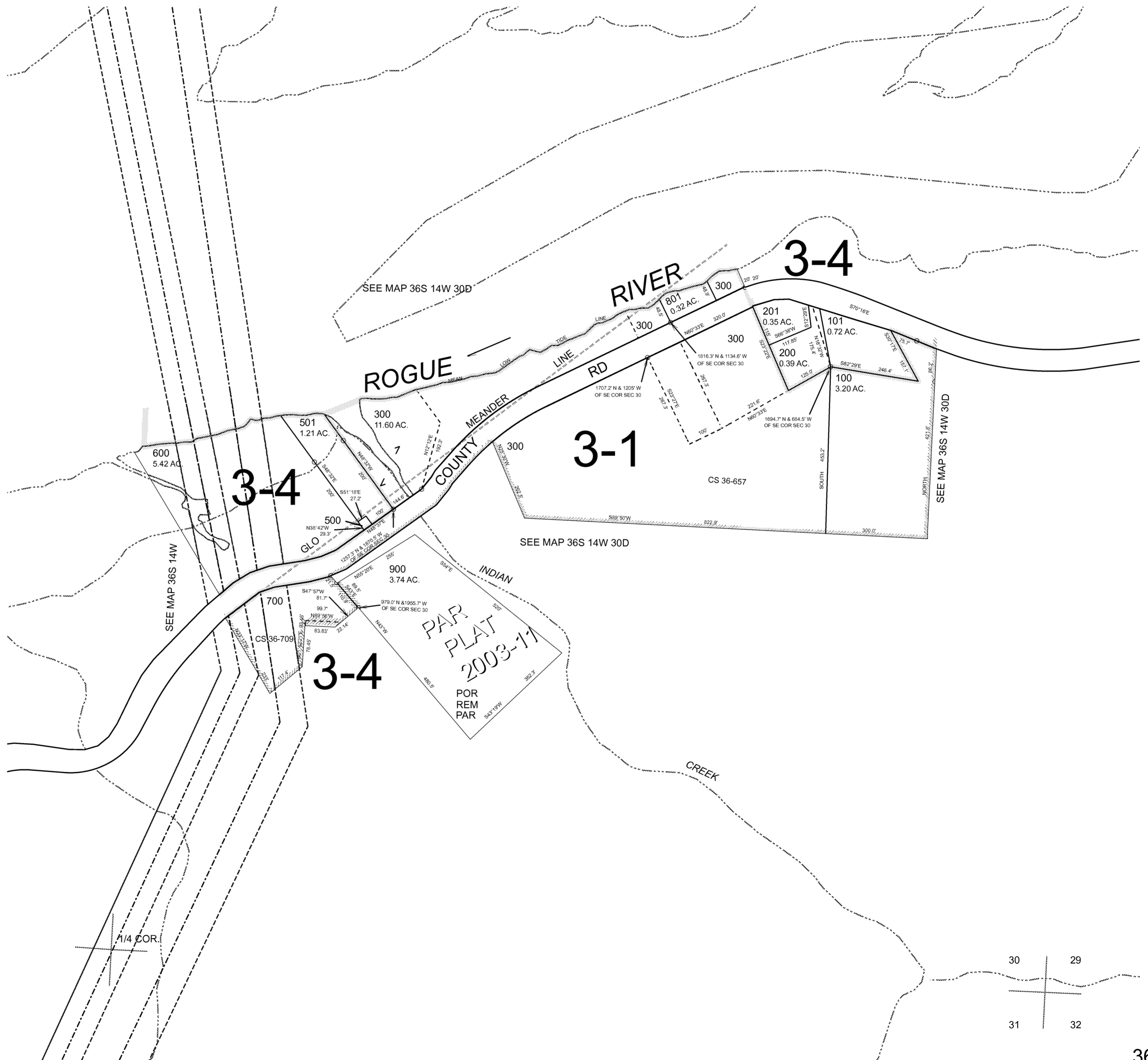
36S14W30D

THIS MAP WAS PREPARED FOR ASSESSMENT PURPOSE ONLY



S.E. 1/4 SEC. 30 T. 36S. R. 14W. W.M. CURRY COUNTY 1" = 200'

CANCELLED: 400 800



Revised RAA 5/13/2008

THIS MAP WAS PREPARED FOR
ASSESSMENT PURPOSE ONLY

SE1/4 SEC. 30 T.36S. R.14W. W.M.
CURRY COUNTY

36 14 30D

1" = 200'

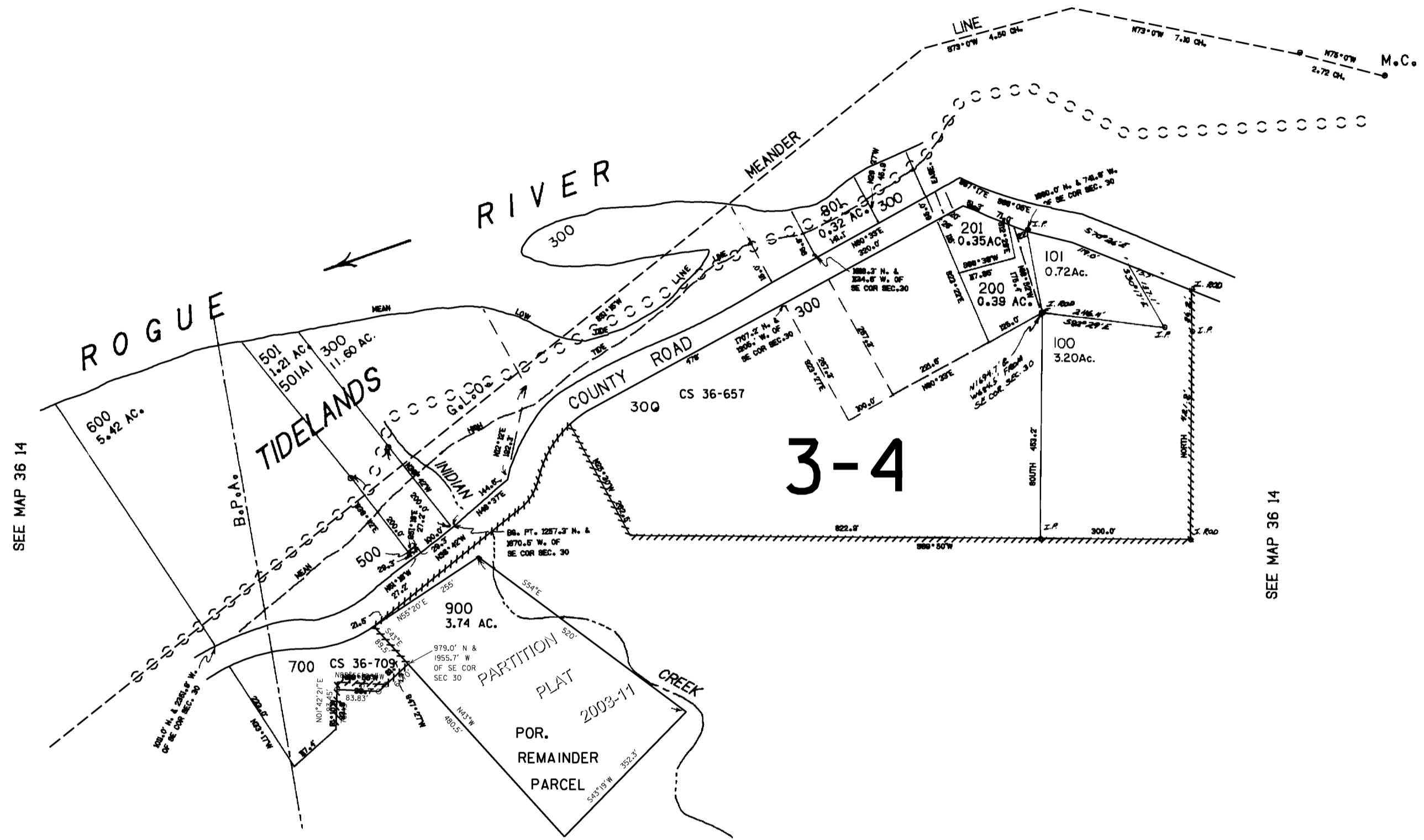


APPROX.
CEN. SEC.

SEE MAP 36 14

1/4 COR.

CANCELLED NO.
400
800



SEE MAP 36 14

SEE MAP 36 14

SEE MAP 36 14

1/4 COR.

30 29
31 32

Revised
12/7/2006, RAA
36 14 30D

THIS MAP WAS PREPARED FOR
ASSESSMENT PURPOSE ONLY

SE 1/4 SEC. 30 T.36S. R.14W. W.M.
CURRY COUNTY

36 14 30D

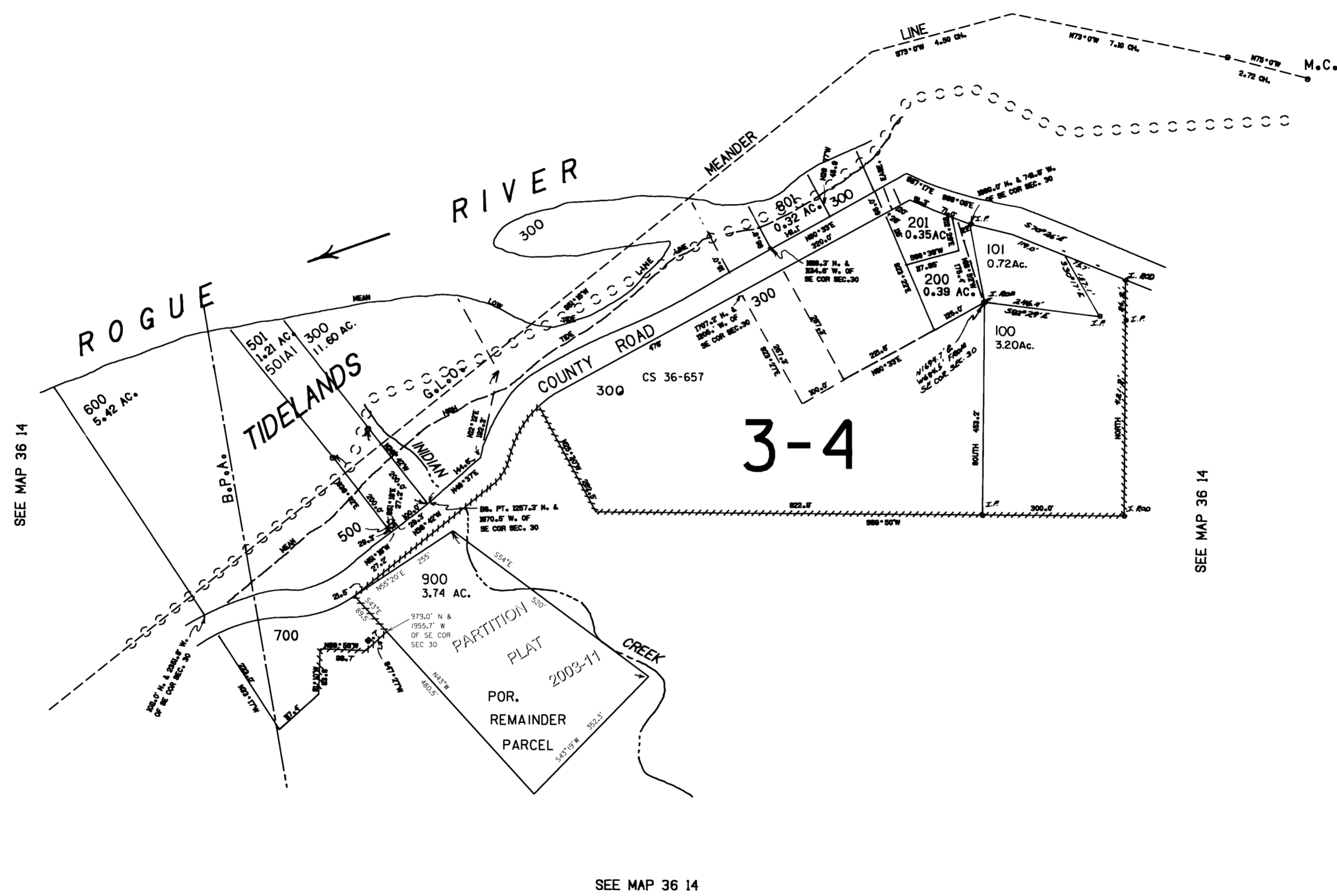
1" = 200'

APPROX.
CEN. SEC.

SEE MAP 36 14

1/4 COR.

CANCELLED NO.
400
800



1/4 COR.

30	29
31	32

Revised
5/12/2004, DBJ

36 14 30D