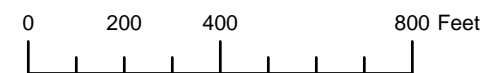


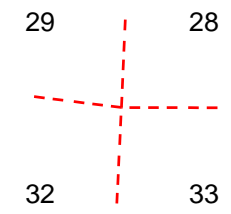
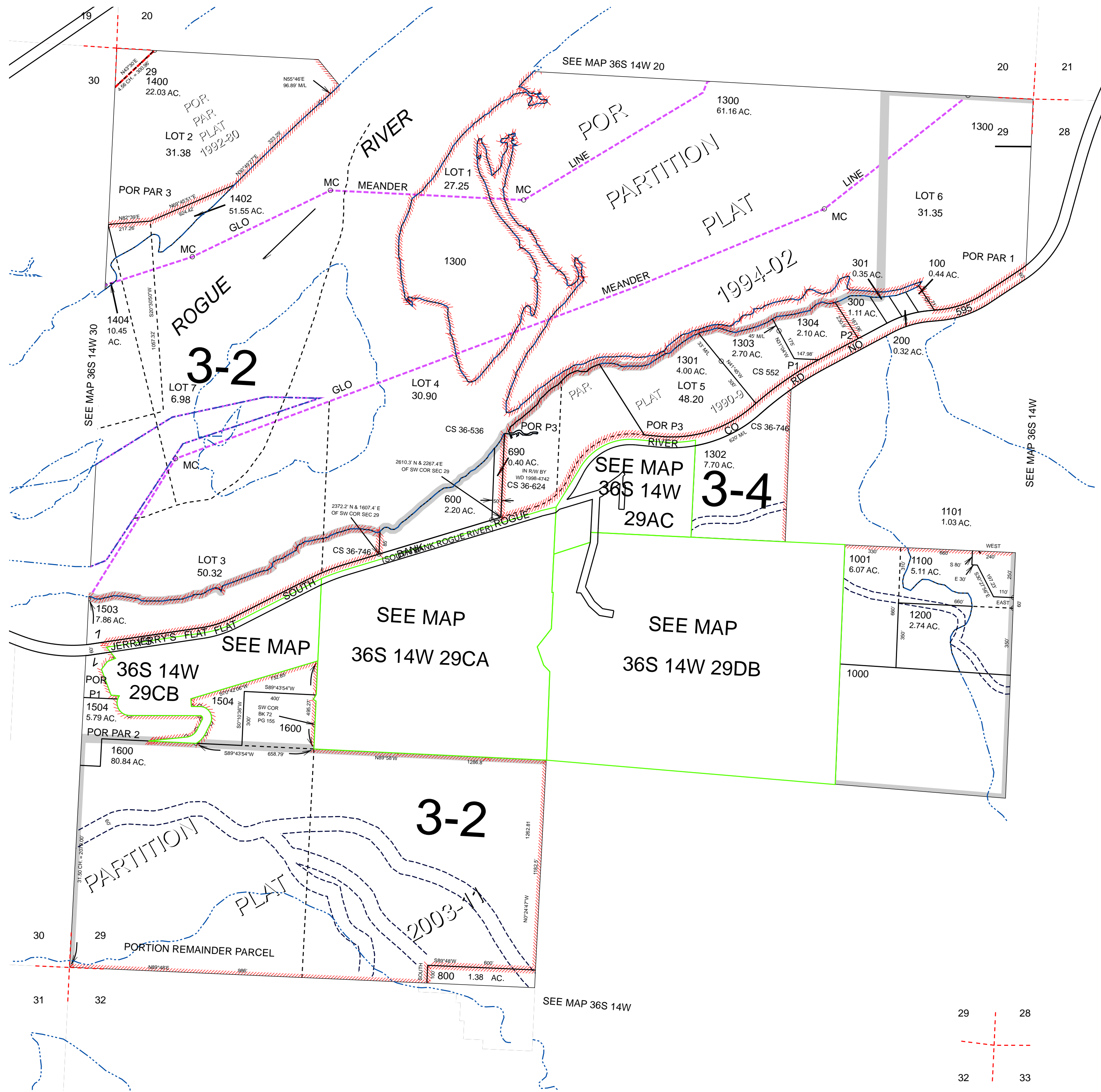
THIS MAP WAS PREPARED FOR ASSESSMENT PURPOSE ONLY



SECTION 29 T.36S. R.14W. W.M. CURRY COUNTY 1" = 400'

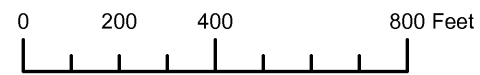
36S14W29 & INDEX

- CANCELLED:
- 400
- 401
- 410
- 501
- 700 THRU 713
- 900 THRU 919
- 1002
- 1102
- 1300A1
- 1305
- 1401
- 1403
- 1500
- 1501
- 1502



Revised: MA
11/2/2010
& INDEX
36S14W29

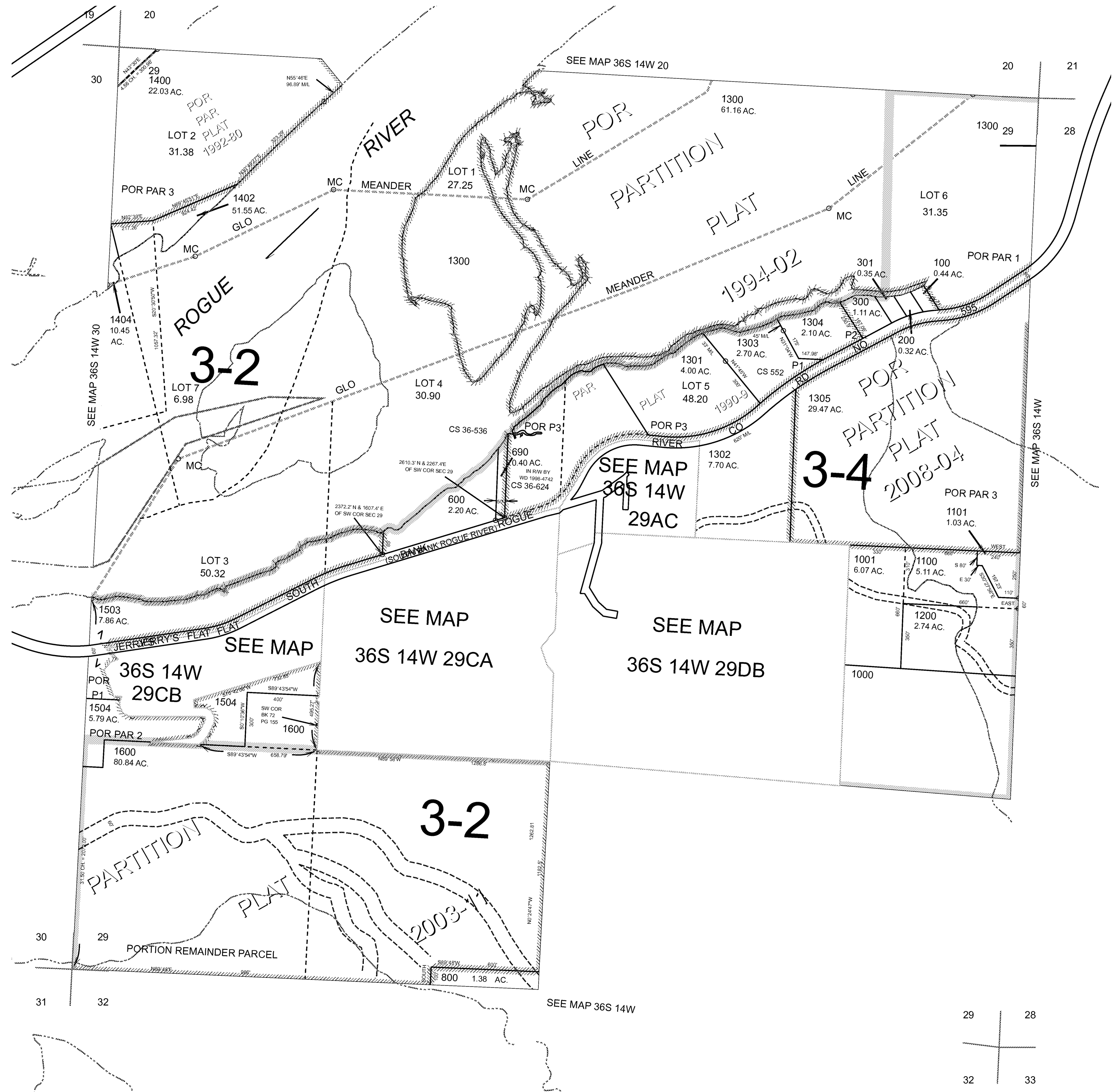
THIS MAP WAS PREPARED FOR ASSESSMENT PURPOSE ONLY



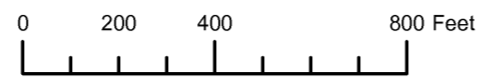
SECTION 29 T.36S. R.14W. W.M.
CURRY COUNTY
1" = 400'

36S14W29
& INDEX

- CANCELLED:
- 400
 - 401
 - 410
 - 501
 - 700 THRU 713
 - 900 THRU 919
 - 1002
 - 1102
 - 1300A1
 - 1401
 - 1403
 - 1500
 - 1501
 - 1502



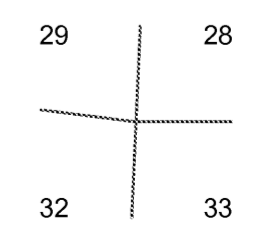
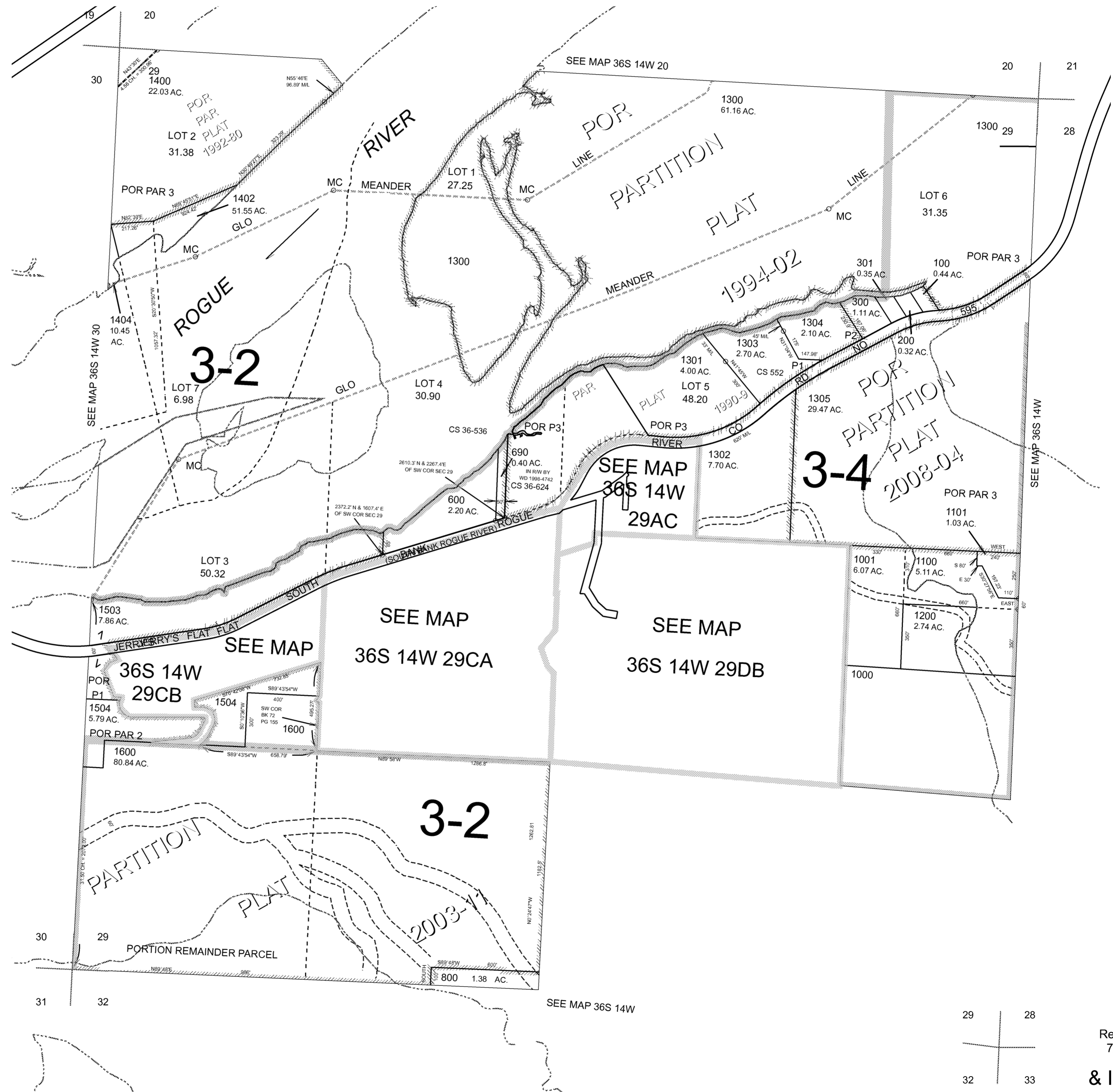
THIS MAP WAS PREPARED FOR ASSESSMENT PURPOSE ONLY



SECTION 29 T.36S. R.14W. W.M. CURRY COUNTY
1" = 400'

36S14W29 & INDEX

- CANCELLED:
- 400
 - 401
 - 410
 - 501
 - 700 THRU 713
 - 900 THRU 919
 - 1002
 - 1102
 - 1300A1
 - 1401
 - 1403
 - 1500
 - 1501
 - 1502



Revised RAA
7/16/2008
& INDEX
36S14W29

THIS MAP WAS PREPARED FOR
ASSESSMENT PURPOSE ONLY

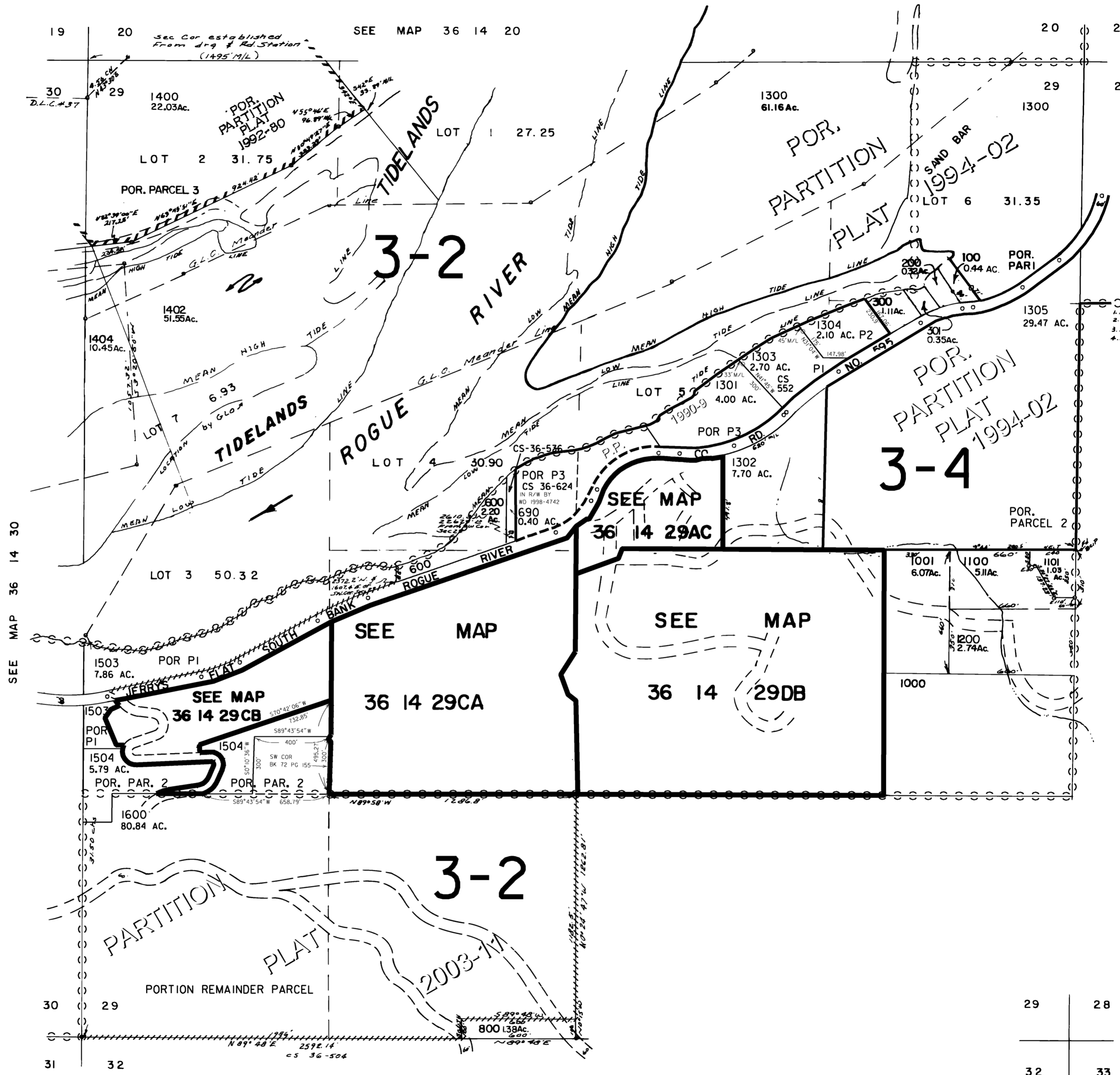
SECTION 29 T.36S. R.14W. W.M.
CURRY COUNTY

36 14 29
& INDEX



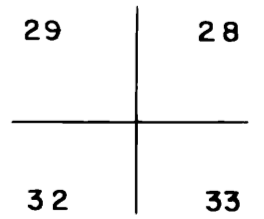
1" = 400'

- CANCELLED NO.
400
401
410
501
700 THRU 713
900 THRU 919
1002
1102
1300A1
1401
1403
1500
1501
1502



SEE MAP 36 14 30

SEE MAP 36 14



Revised
9/8/2004, DBJ
36 14 29
& INDEX