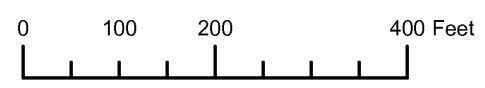
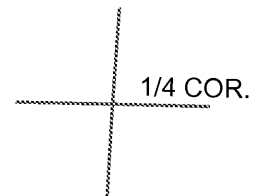
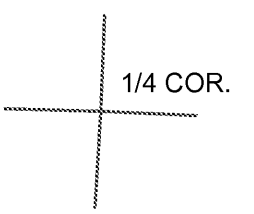
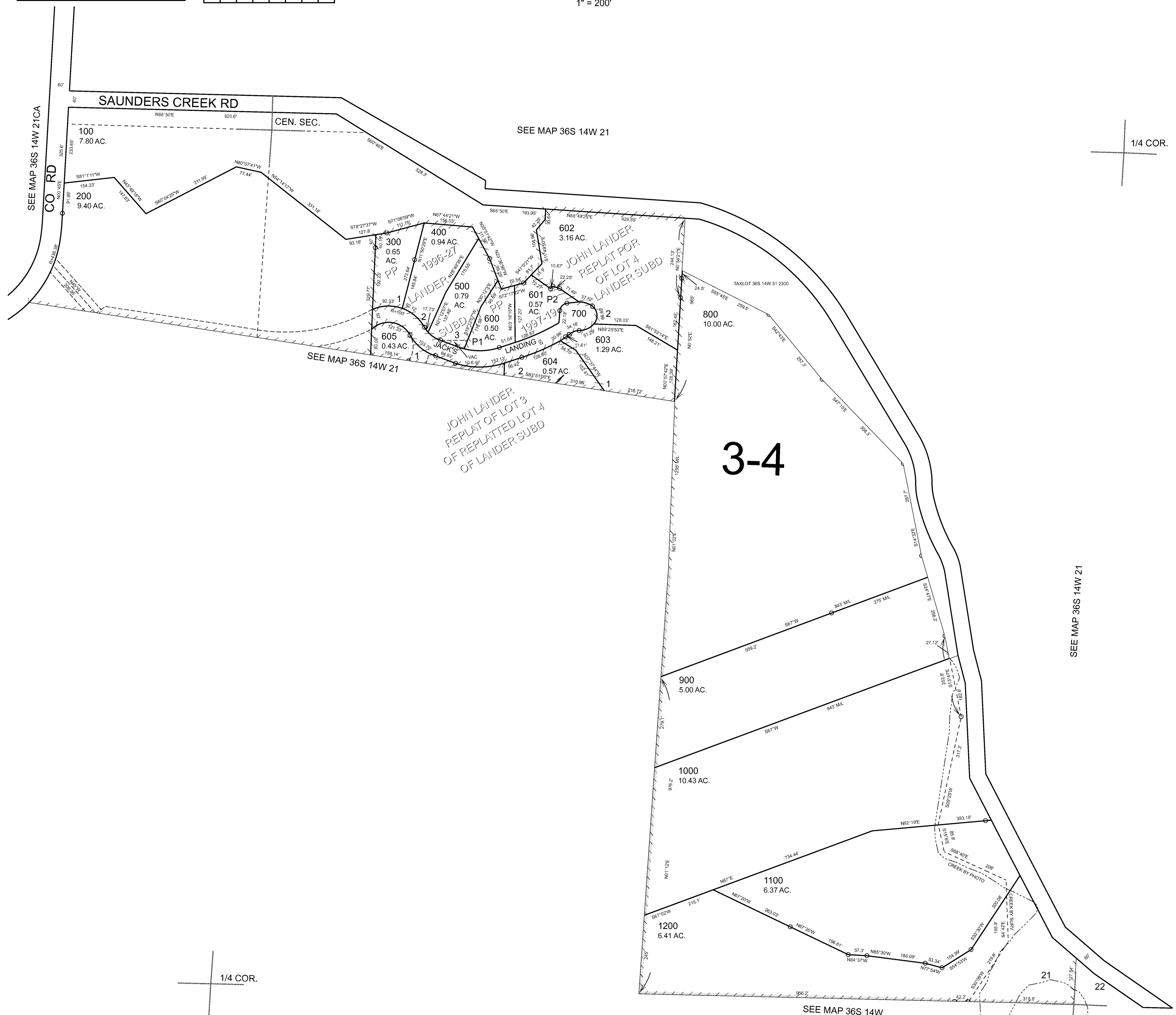


THIS MAP WAS PREPARED FOR ASSESSMENT PURPOSE ONLY



SE1/4 SECTION 21 T.36S. R.14W. W.M. CURRY COUNTY 1" = 200'

36S 14W 21D

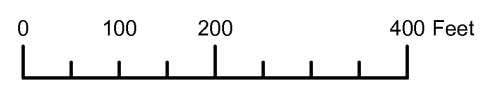


3-4

SEE MAP 36S 14W 21

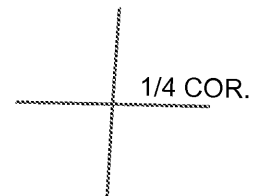
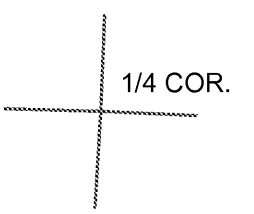
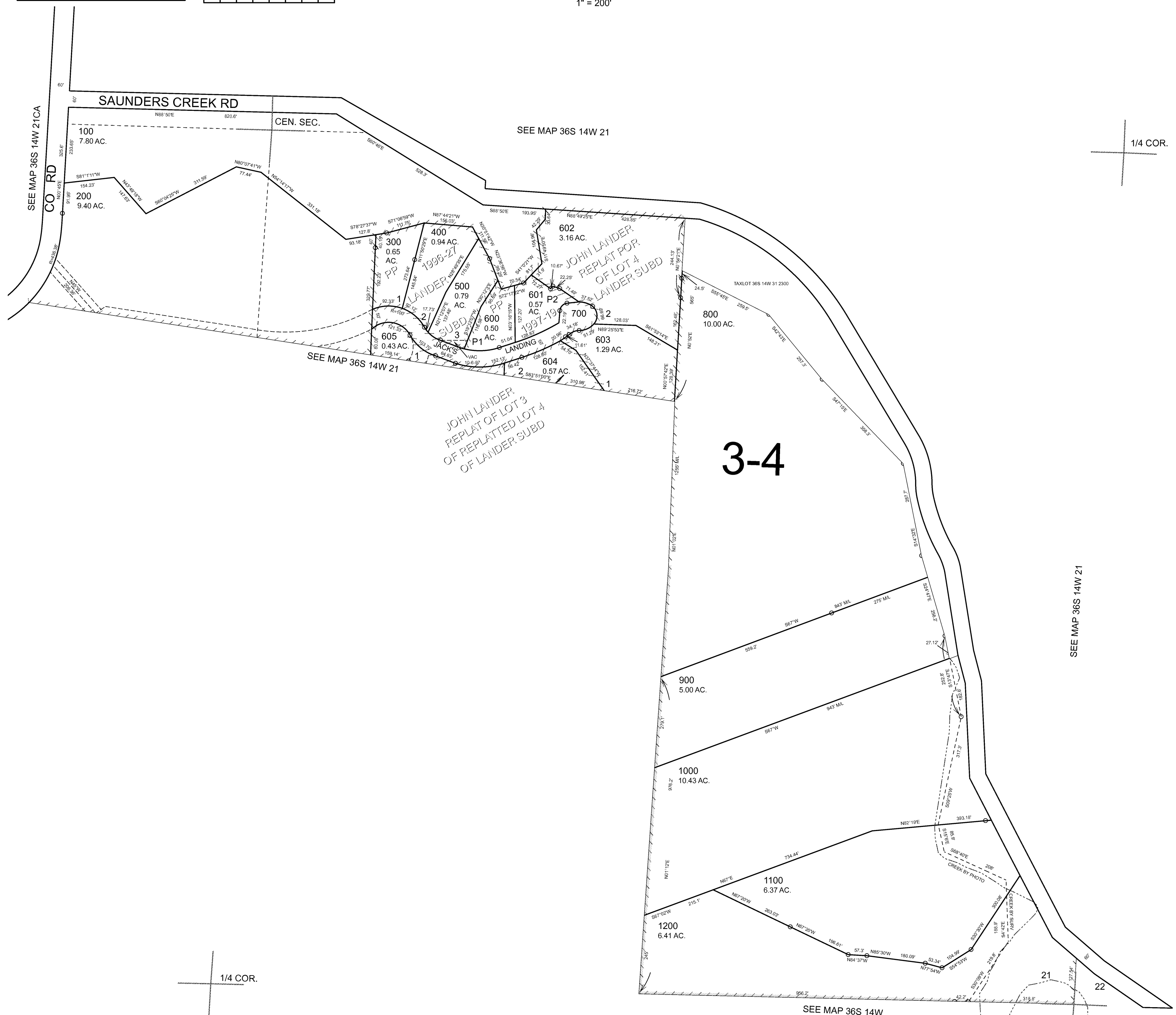
SEE MAP 36S 14W

THIS MAP WAS PREPARED FOR ASSESSMENT PURPOSE ONLY



SE1/4 SECTION 21 T.36S. R.14W. W.M. CURRY COUNTY 1" = 200'

36S 14W 21D



3-4

SEE MAP 36S 14W 21

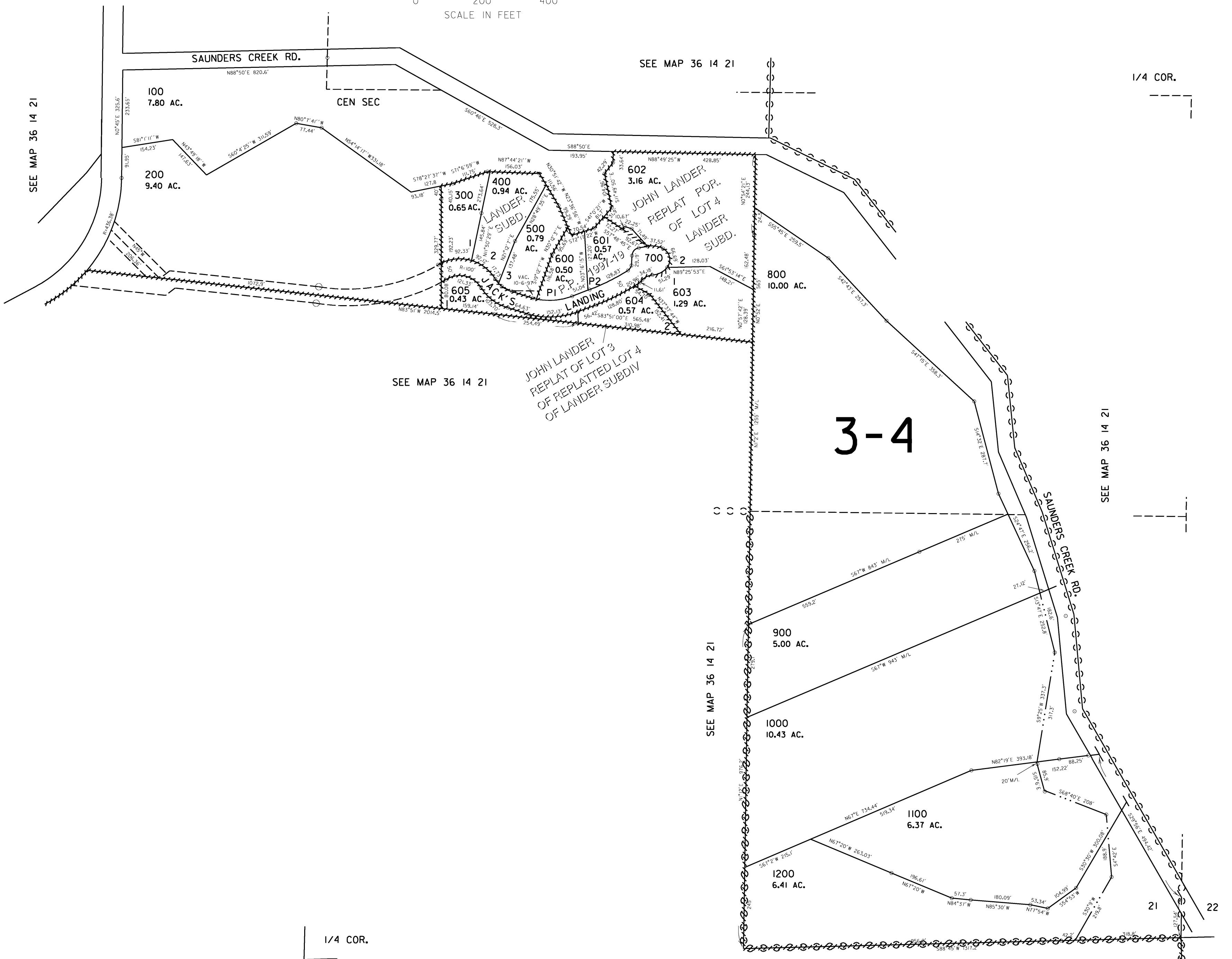
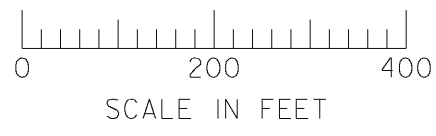
SEE MAP 36S 14W

THIS MAP WAS PREPARED FOR  
ASSESSMENT PURPOSE ONLY

SE1/4 SEC. 21 T.36S. R.14W. W.M.  
CURRY COUNTY

36 14 21D

1" = 200'



SEE MAP 36 14 21

SEE MAP 36 14 21

1/4 COR.

SEE MAP 36 14 21

JOHN LANDER  
REPLAT OF LOT 3  
OF REPLATTED LOT 4  
OF LANDER SUBDIV

3-4

SEE MAP 36 14 21

SEE MAP 36 14 21

1/4 COR.

SEE MAP 36 14