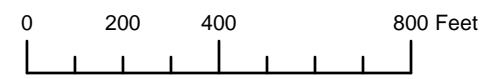


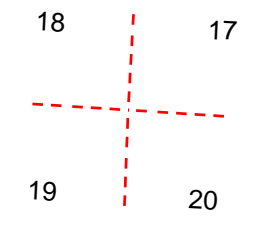
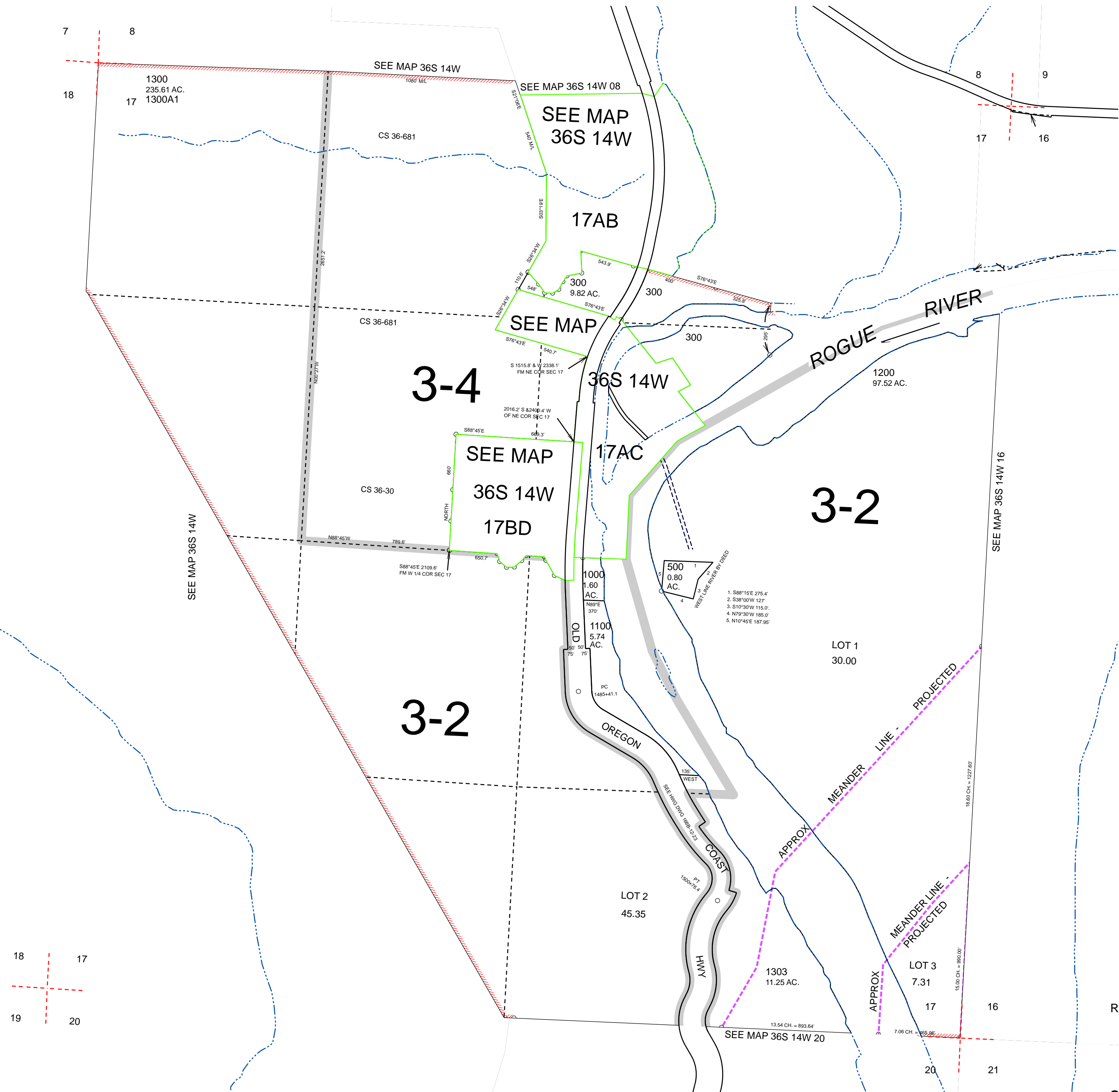
THIS MAP WAS PREPARED FOR ASSESSMENT PURPOSE ONLY



SECTION 17 T.36S. R.14W. W.M.
CURRY COUNTY
1" = 400'

36S14W17
& INDEX

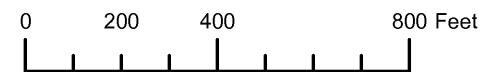
CANCELLED:
100 THRU 201
301 THRU 400
600 THRU 900
1301
1302
1400



Revised: RAA
9/7/2010

& INDEX
36S14W17

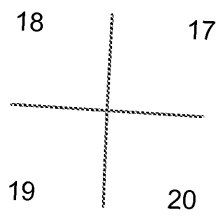
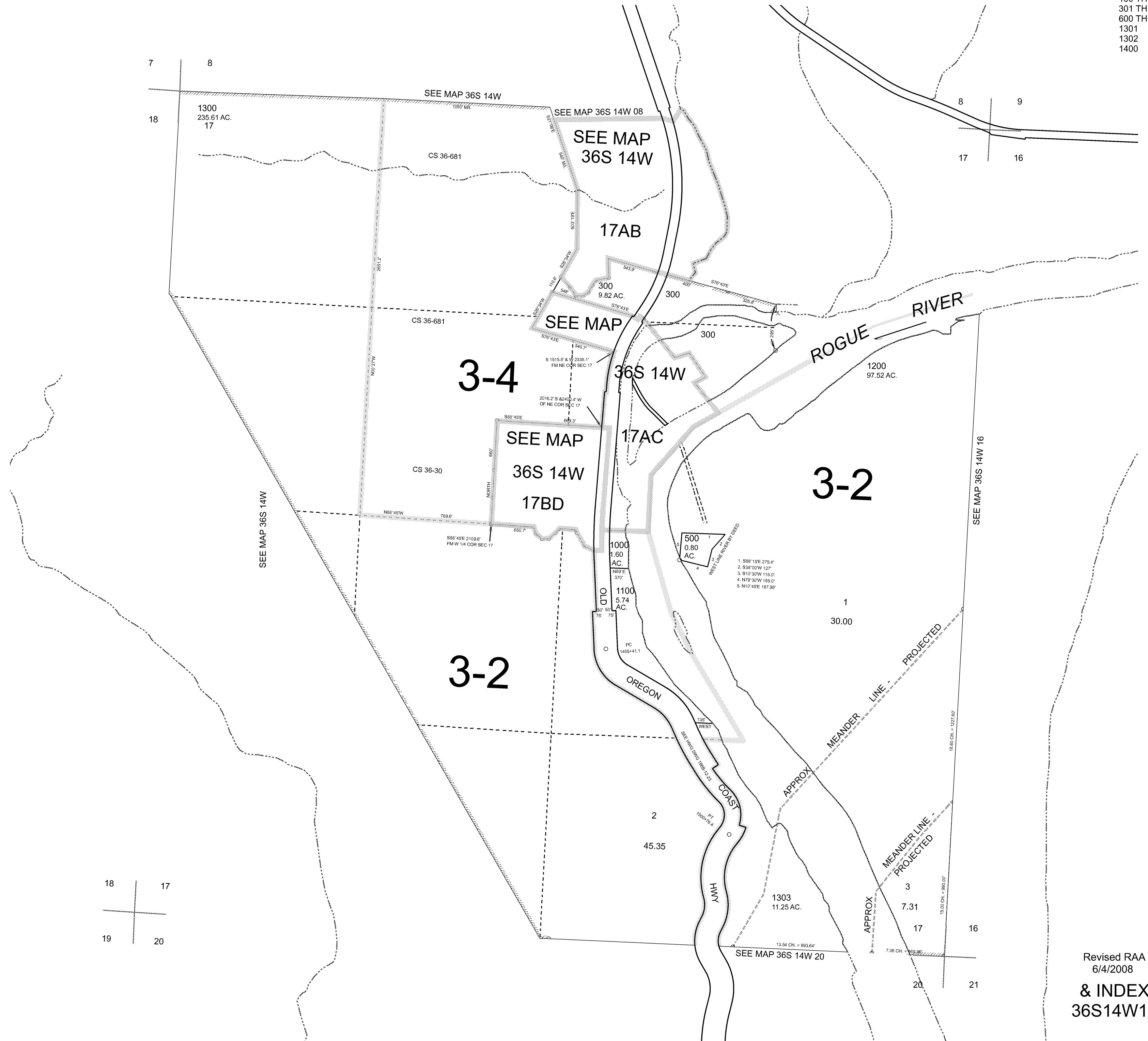
THIS MAP WAS PREPARED FOR ASSESSMENT PURPOSE ONLY



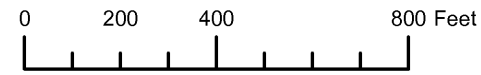
SECTION 17 T.36S. R.14W. W.M. CURRY COUNTY
1" = 400'

36S14W17 & INDEX

CANCELLED:
100 THRU 201
301 THRU 400
600 THRU 900
1301
1302
1400



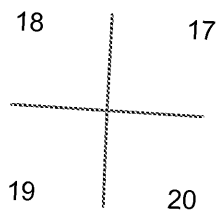
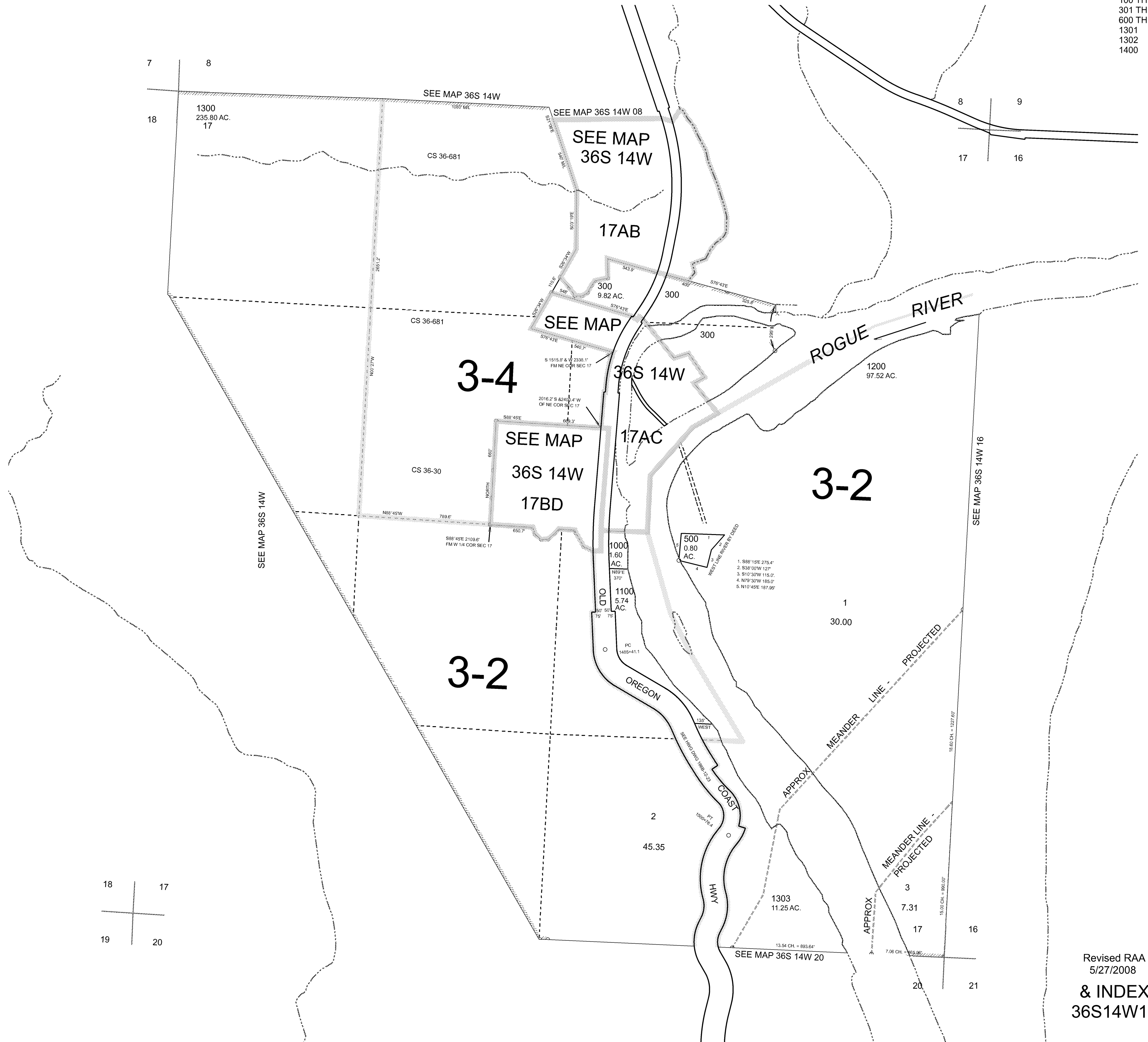
THIS MAP WAS PREPARED FOR ASSESSMENT PURPOSE ONLY



SECTION 17 T.36S. R.14W. W.M. CURRY COUNTY
1" = 400'

36S14W17 & INDEX

CANCELLED:
100 THRU 201
301 THRU 400
600 THRU 900
1301
1302
1400



Revised RAA
5/27/2008
& INDEX
36S14W17

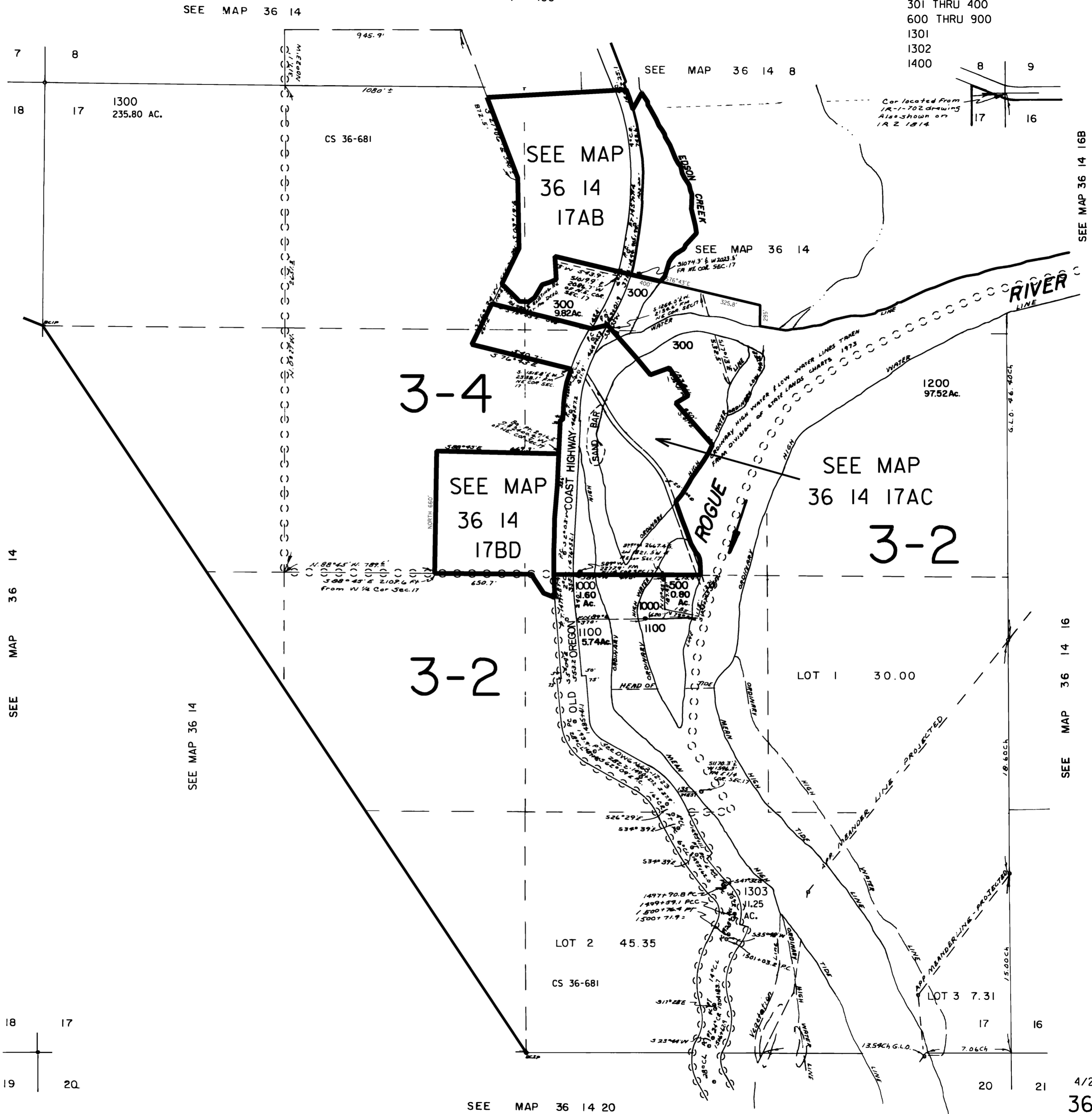
THIS MAP WAS PREPARED FOR
ASSESSMENT PURPOSE ONLY

SECTION 17 T.36S. R.14W. W.M.
CURRY COUNTY

1" = 400'

36 14 17
& INDEX

CANCELLED NO.
100 THRU 201
301 THRU 400
600 THRU 900
1301
1302
1400



TL 700 & 800

1.	N 68°36' W	84.4'
2.	N 68°46' W	23.4'
3.	N 66°48' W	61.7'
4.	N 32°12' W	32.4'
5.	N 74°15' W	65.8'
6.	N 17°31' E	48.8'
7.	S 63°20' E	20.8'
8.	N 09°31' E	68.9'
9.	S 75°46' E	62.8'
10.	S 70°49' W	134.1'
11.	N 64°47' E	99.2'
12.	N 49°25' W	56.7'
13.	N 26°17' W	53.2'
14.	N 49°48' W	46.2'
15.	S 77°49' W	83.9'
16.	N 75°46' W	63.8'
17.	S 59°57' W	68.9'
18.	N 59°45' W	75'
19.	N 4°39' E	91.1'
20.	N 24°46' E	76.9'
21.	N 71°34' E	93.7'
22.	S 40°33' E	106.8'
23.	S 13°43' W	182.3'
24.	N 66°03' W	169.9'

Revised
4/21/2005, DBJ
36 14 17
& INDEX