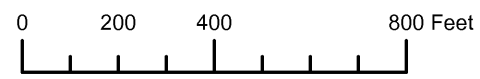


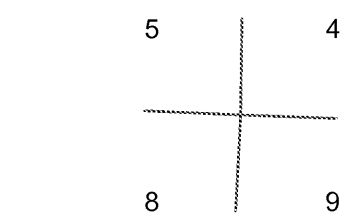
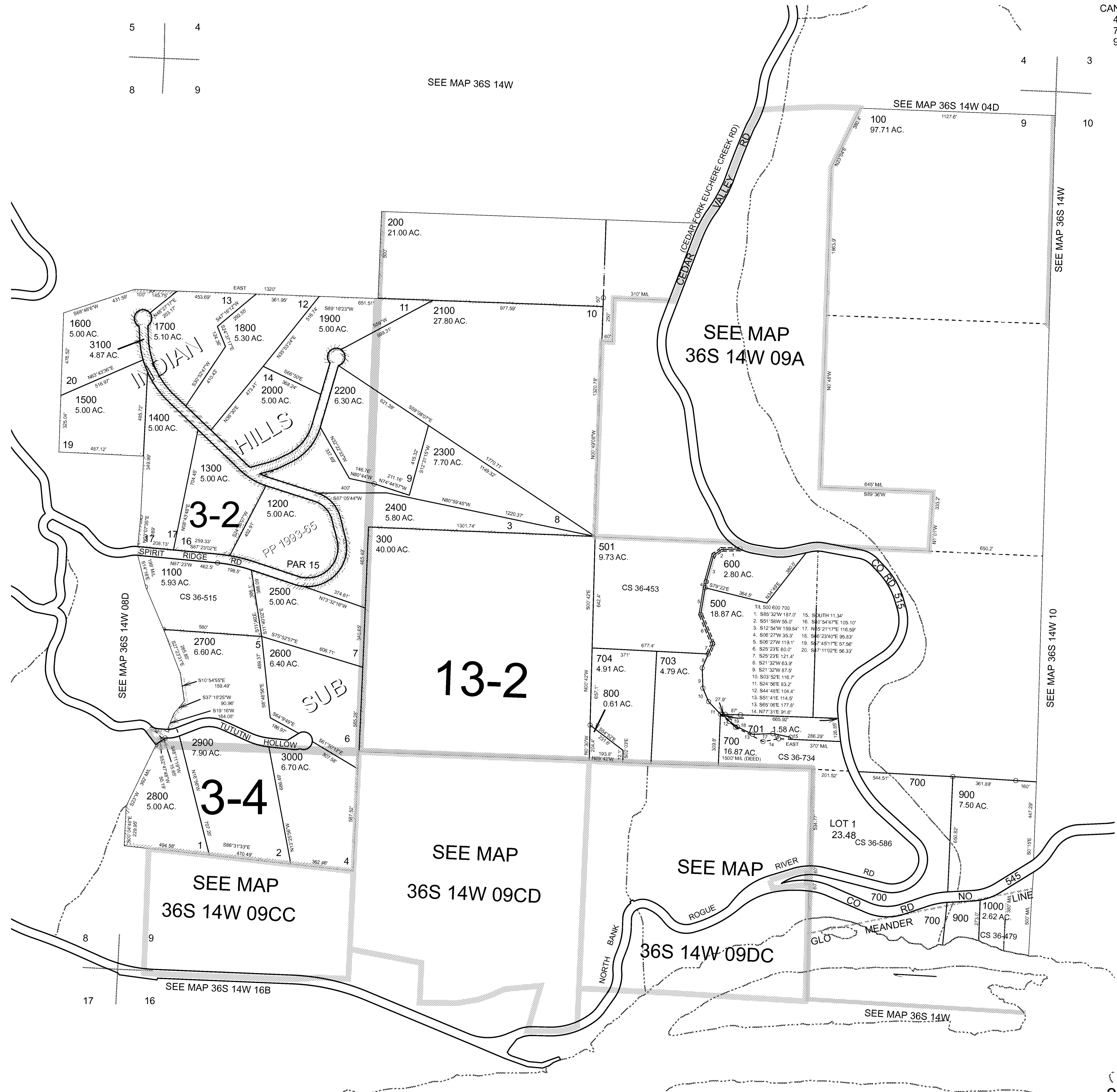
THIS MAP WAS PREPARED FOR ASSESSMENT PURPOSE ONLY



SECTION 9 T.36S. R.14W. W.M. CURRY COUNTY 1" = 400'

36S14W09 & INDEX

CANCELLED: 400 THRU 403 702 901



SEE MAP 36S 14W

SEE MAP 36S 14W 04D

SEE MAP 36S 14W 09A

SEE MAP 36S 14W

SEE MAP 36S 14W 10

SEE MAP 36S 14W 08D

SEE MAP 36S 14W 09CC

SEE MAP 36S 14W 09CD

SEE MAP RIVER

36S 14W 09DC

SEE MAP 36S 14W 16B

SEE MAP 36S 14W

Revised 9C 8/15/2008

& INDEX 36S14W09

THIS MAP WAS PREPARED FOR
ASSESSMENT PURPOSE ONLY

SECTION 9 T.36S. R.14W. W.M.
CURRY COUNTY

1" = 400'

36 14 9
& INDEX

5 4
8 9

4 3
9 10

SEE MAP 36 14

CANCELLED NO.
400 THRU
403
702
901

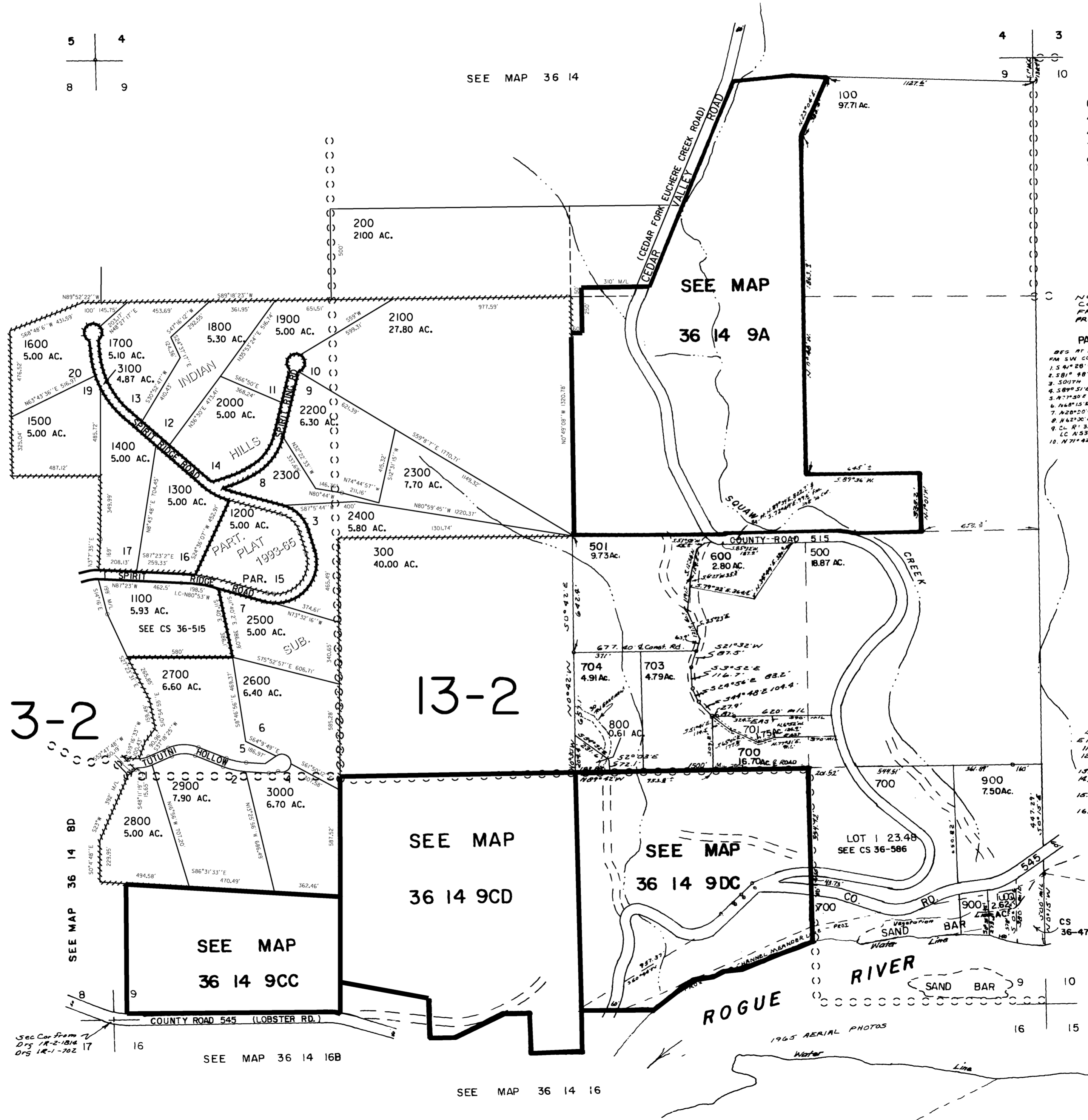
NOTE:
Control TAKEN
FROM TIMBER
PROJECTION 1959

PARCEL 401
REG AT RPT #290.01 F1813.24
FM SW COR SEC 9
1. S 54° 28' W 315.14'
2. S 81° 48' E 72.21'
3. S 00° 04' N 195.3'
4. S 89° 51' E 211.3'
5. N 77° 30' E 120.1'
6. N 68° 15' E 88.0'
7. N 20° 20' W 25.0'
8. N 62° 30' E 112.45'
9. CL R = 356.51'
LC = 53° 14' E 108.16'
10. N 71° 42' W 541.1'

SEE MAP 36 14 10

PARCEL 402
39.01' @ 0.01' N 290.01' #
5.1813.24 FM SW COR SEC 9
11. N 44° 58' E 220.81'
12. CL R = 729.11'
LC = 57° 35' E 205.04'
13. S 88° 03' E 172.79'
14. CL R = 54.44'
LC = 57° 06' E 55.98'
15. CL R = 206.48'
LC = 55° 18' E 147.04'
16. CL R = 269.8'
LC = 53° 03' W 135.11'

Revised
2/9/2005, DBJ
36 14 9
& INDEX



Sec Cor from
Drs 14-2-1814
Drs 14-1-702

SEE MAP 36 14 16B

SEE MAP 36 14 16