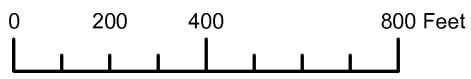


THIS MAP WAS PREPARED FOR ASSESSMENT PURPOSE ONLY

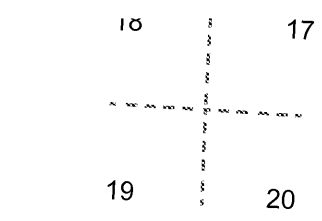
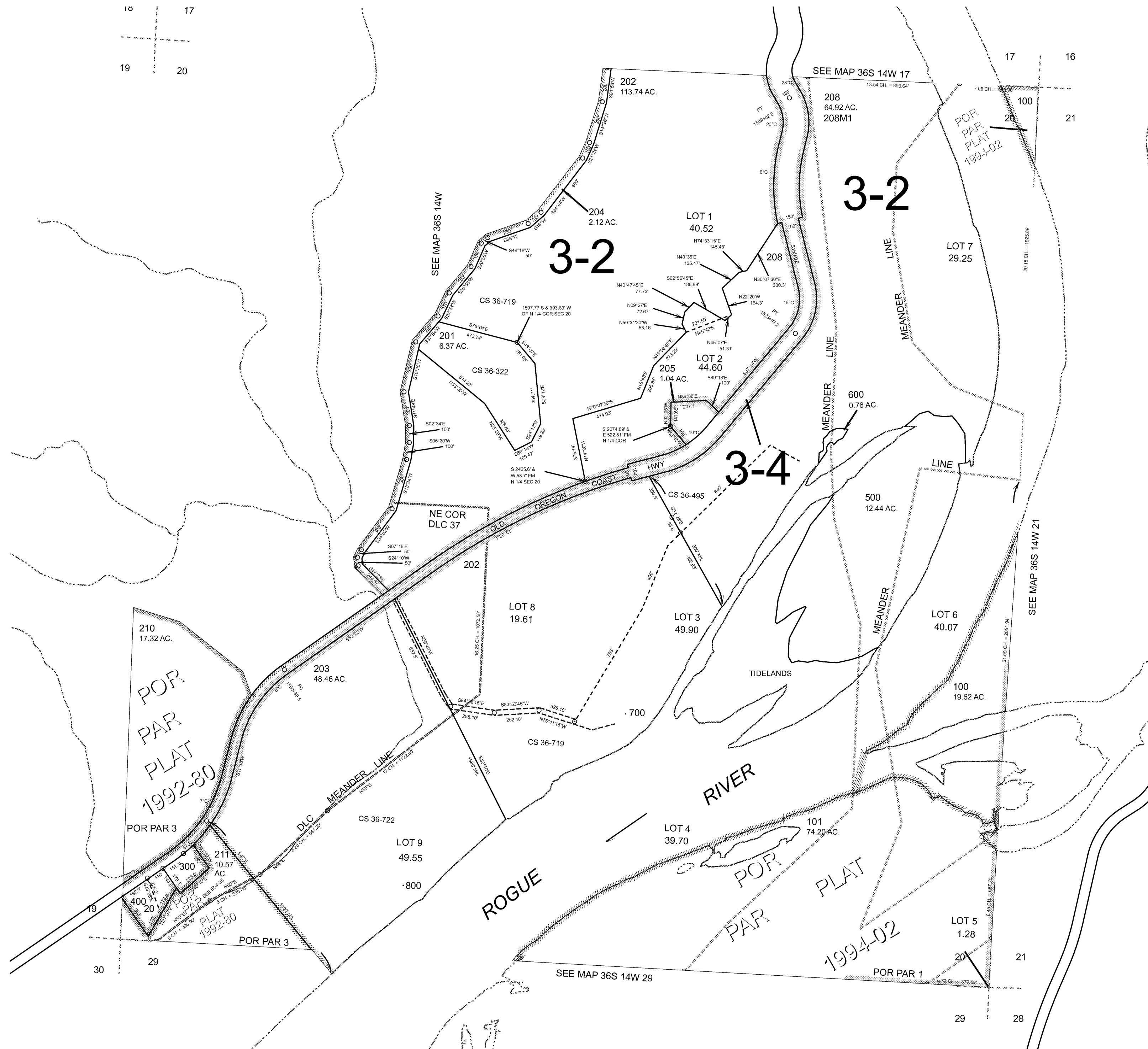


SECTION 20 T.36S. R.14W. W.M. CURRY COUNTY

1" = 400'

36S14W20

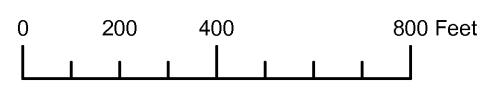
CANCELLED:
200
206
207
209
212



Revised: RAA
3/11/2009

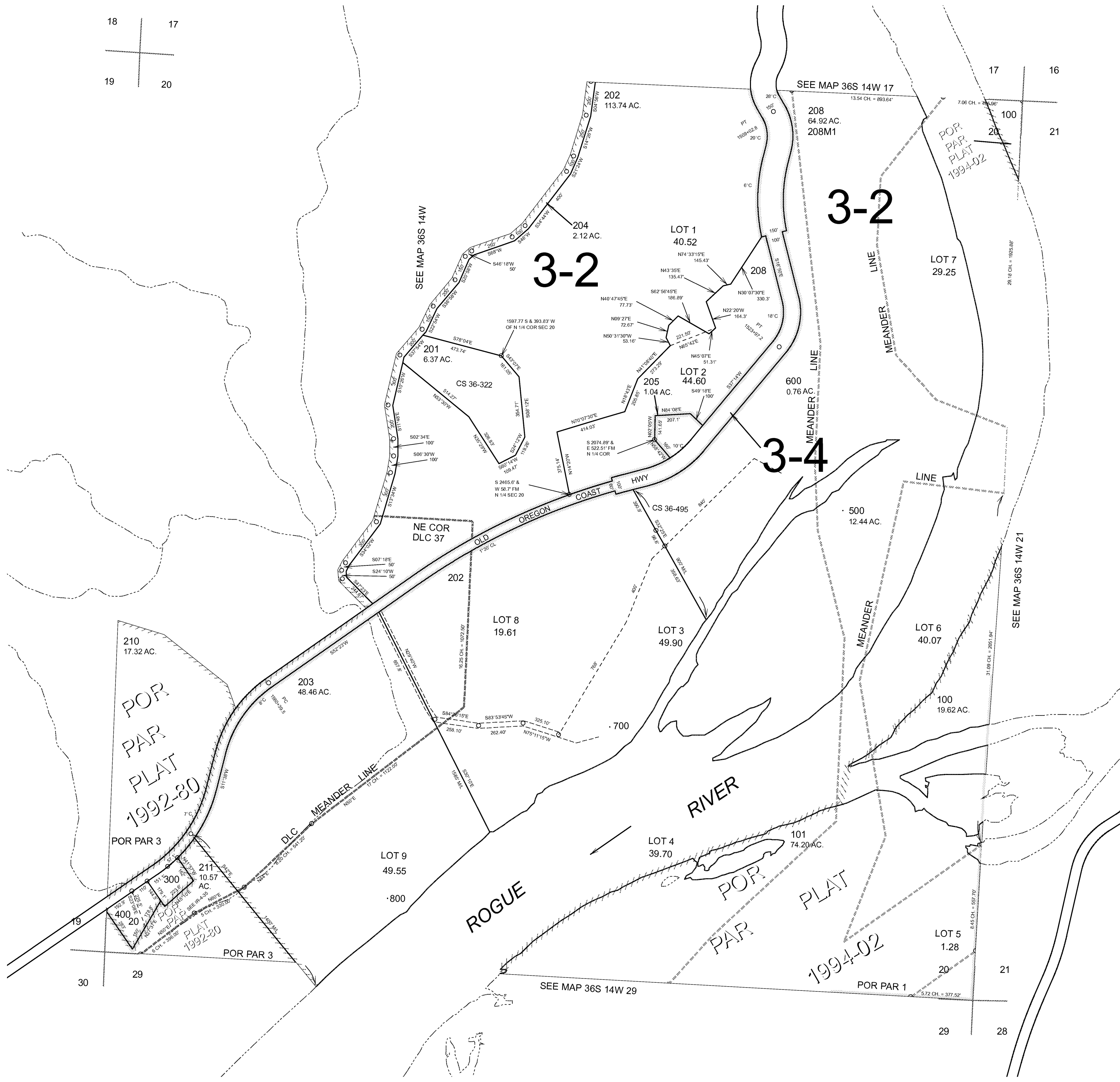
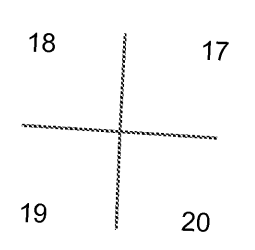
36S14W20

THIS MAP WAS PREPARED FOR ASSESSMENT PURPOSE ONLY



SECTION 20 T.36S. R.14W. W.M. CURRY COUNTY 1" = 400'

36S 14W 20 CANCELLED NO. 200 206 207 209 212



19 29 30

20 21 28 29

THIS MAP WAS PREPARED FOR
ASSESSMENT PURPOSE ONLY

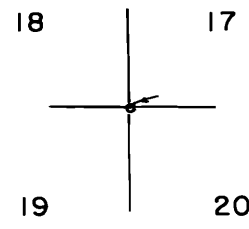
SECTION 20 T.36S. R.14W. WM.
CURRY COUNTY

36 14 20

1" = 400'

SEE MAP 36 14 17

3-4



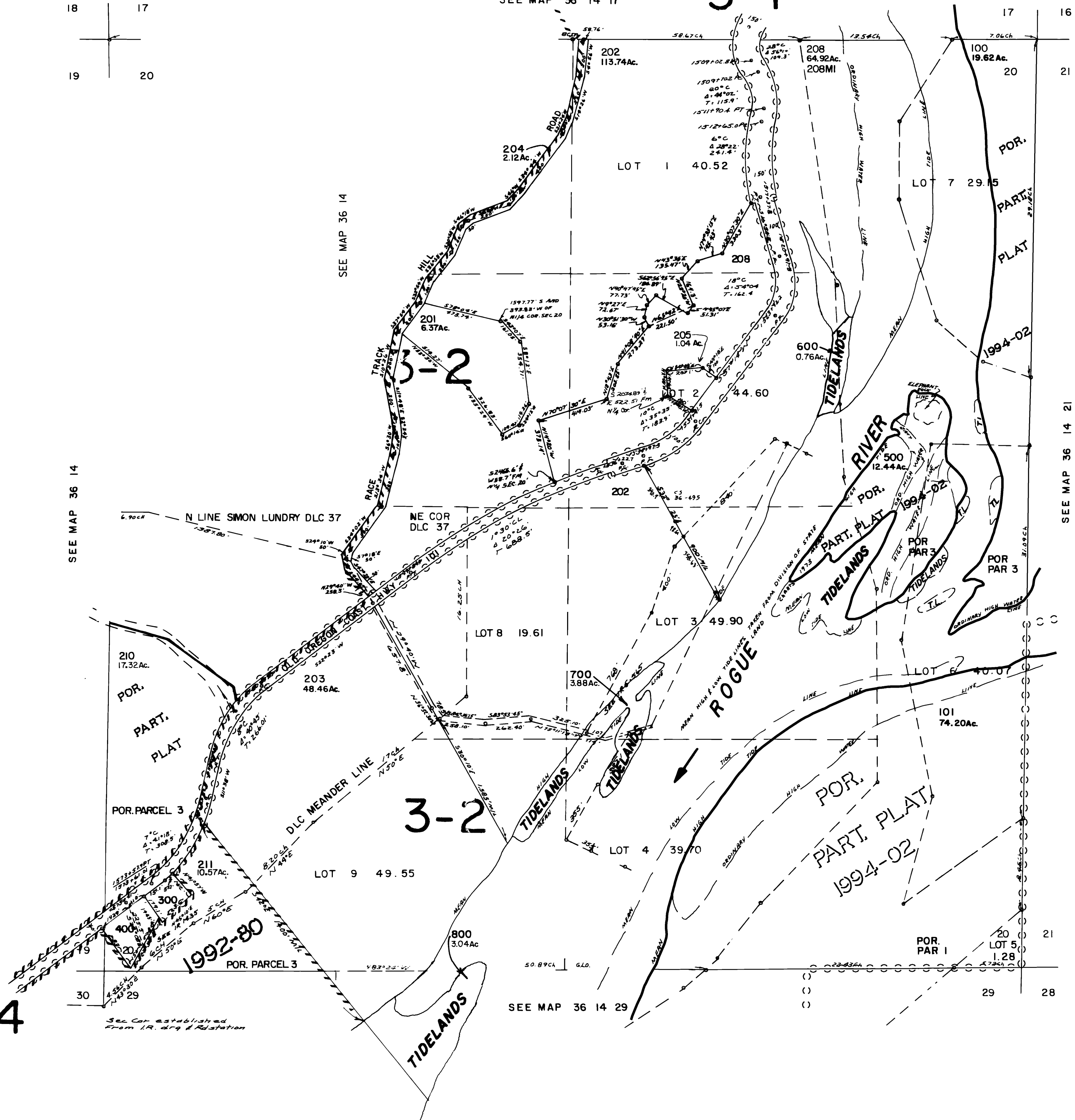
SEE MAP 36 14

SEE MAP 36 14

SEE MAP 36 14 21

3-4

Sec. Cor. established
from I.R. dir. & station



CANCELLED NO.
200
206
207
209
212

Revised
5/10/01, LH

36 14 20