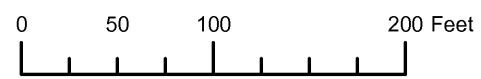


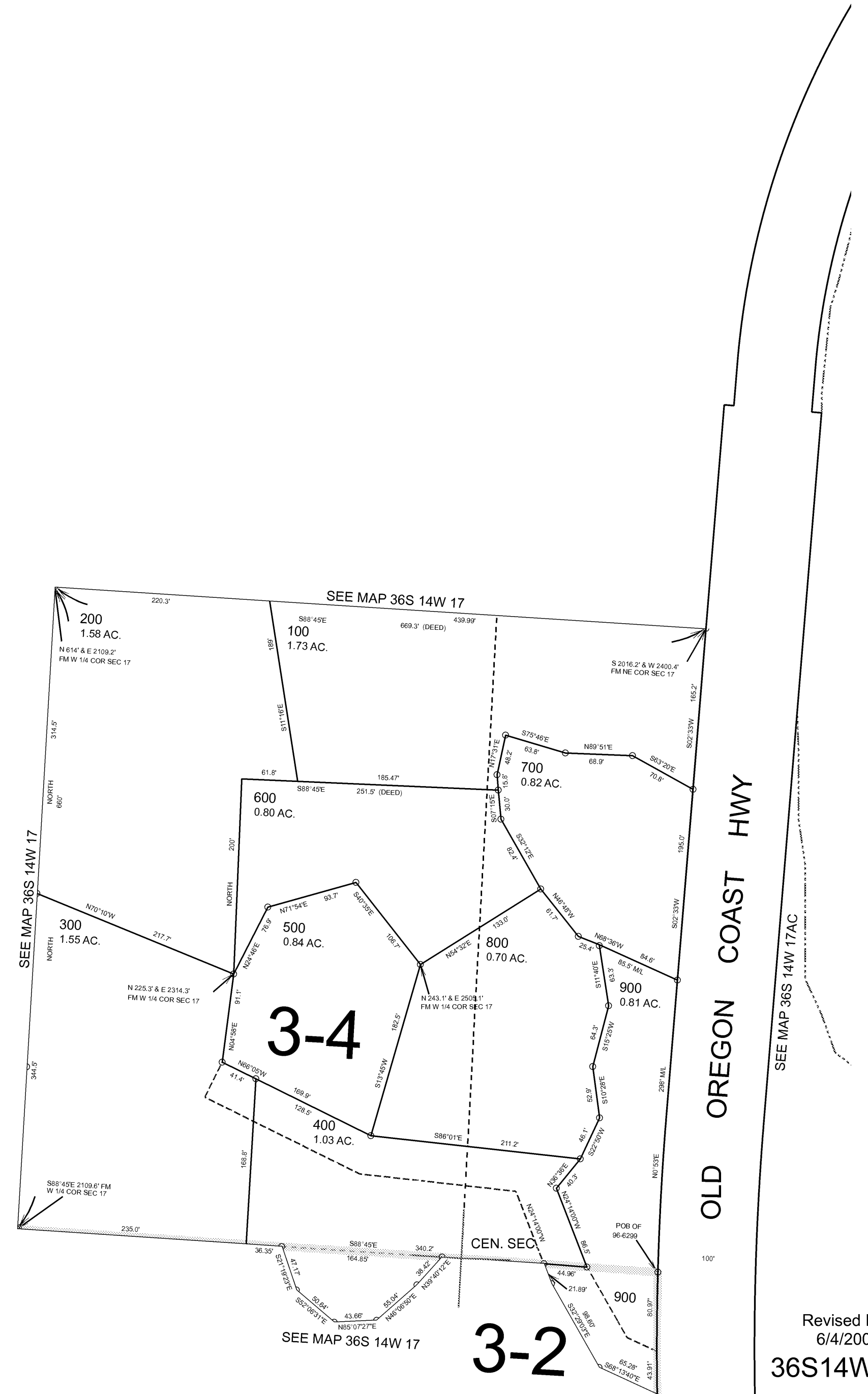
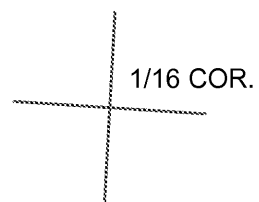
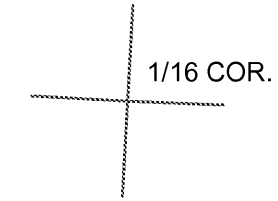
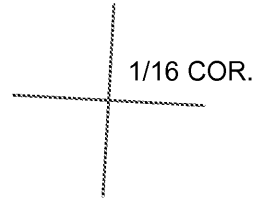
THIS MAP WAS PREPARED FOR ASSESSMENT PURPOSE ONLY



S.E. 1/4 N.W. 1/4 SEC. 17 T.36S. R.14W. W.M. CURRY COUNTY  
1" = 100'

36S14W17BD

CANCELLED:  
400

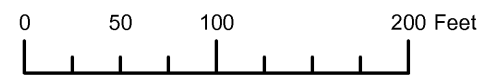


SEE MAP 36S 14W 17AC

OLD OREGON COAST HWY

Revised RAA  
6/4/2008  
36S14W17BD

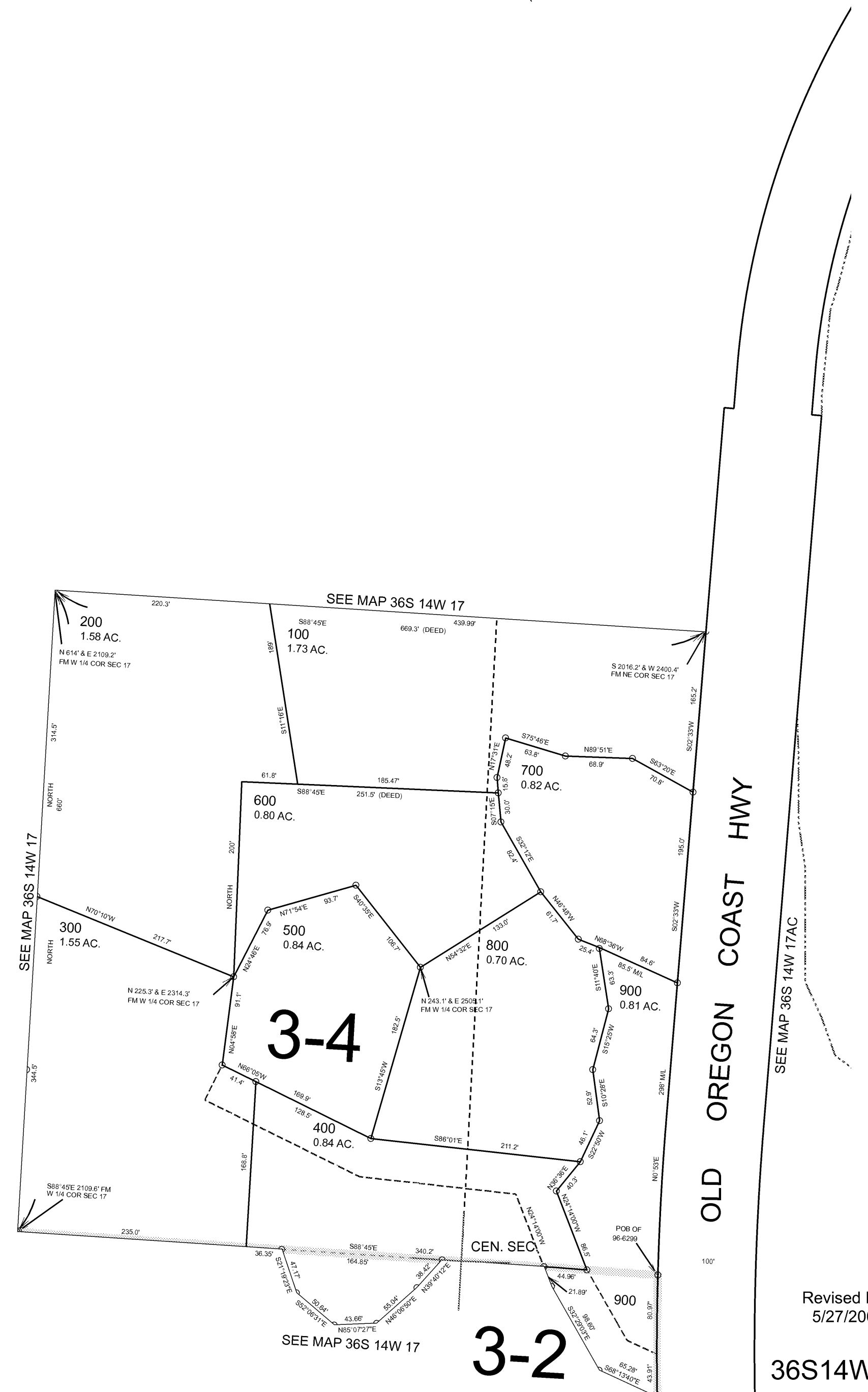
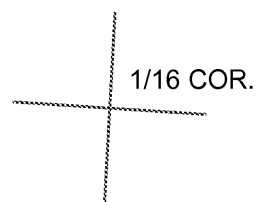
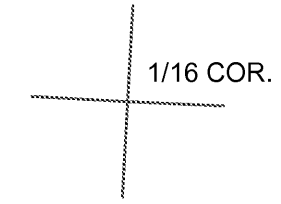
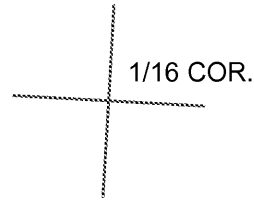
THIS MAP WAS PREPARED FOR ASSESSMENT PURPOSE ONLY



S.E. 1/4 N.W. 1/4 SEC. 17 T.36S. R.14W. W.M. CURRY COUNTY  
1" = 100'

36S14W17BD

CANCELLED:  
400



3-4

3-2

SEE MAP 36S 14W 17AC

OLD OREGON COAST HWY

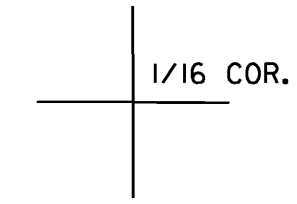
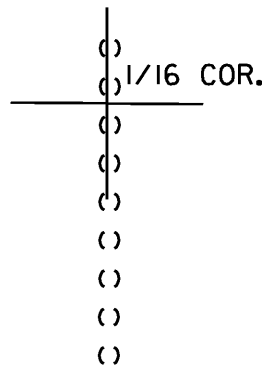
Revised RAA  
5/27/2008

36S14W17BD

THIS MAP WAS PREPARED FOR  
ASSESSMENT PURPOSE ONLY

SE1/4 NW1/4 SEC.17 T.36S. R.14W. W.M.  
CURRY COUNTY  
1" = 100'

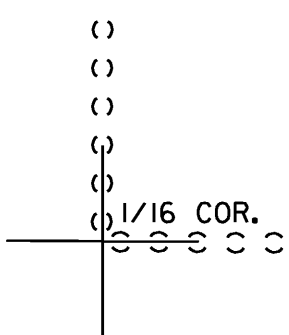
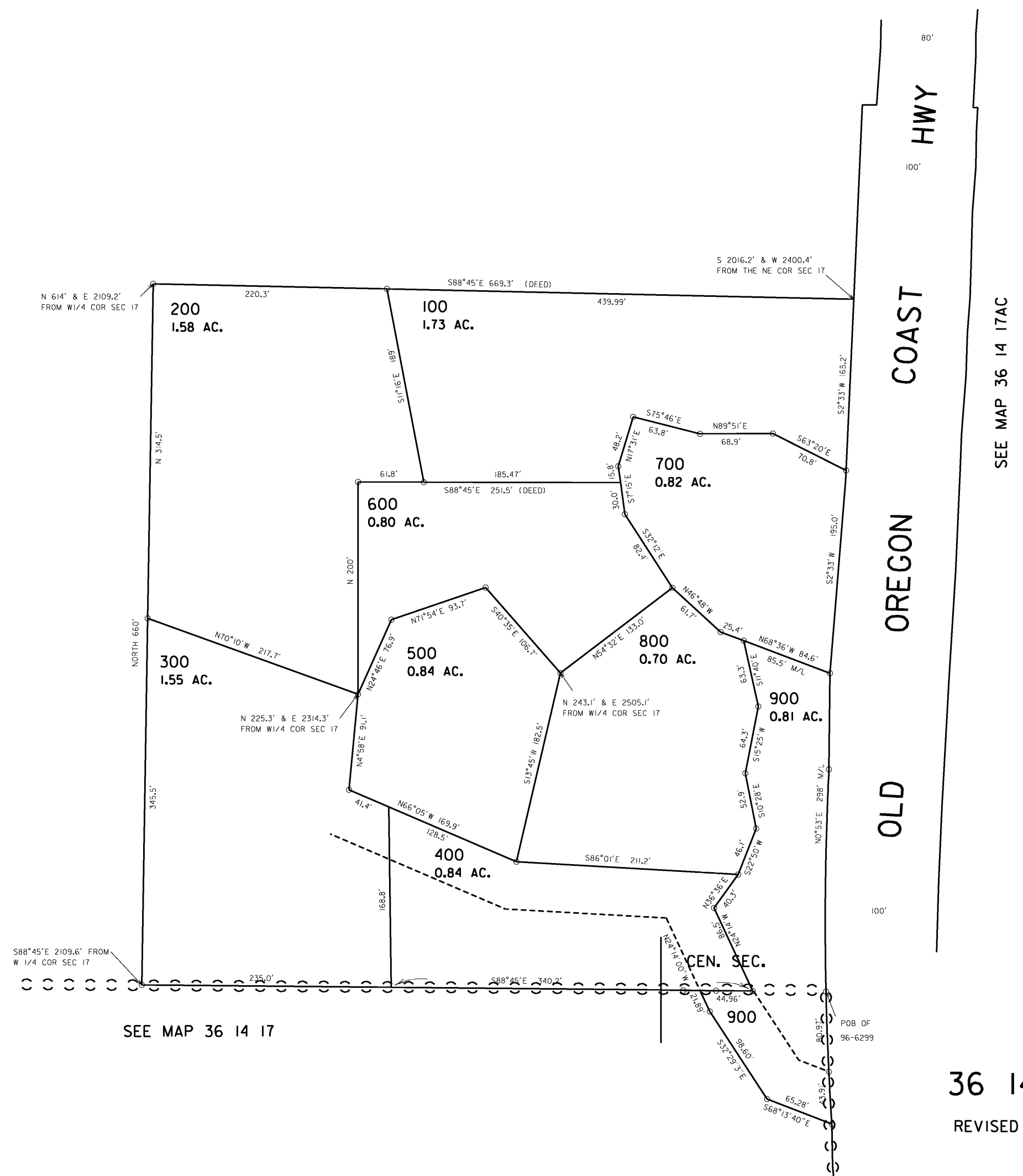
36 14 17BD



SEE MAP 36 14 17

3-4

SEE MAP 36 14 17



36 14 17BD

REVISED 3-31-99, RA