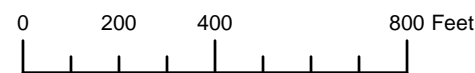


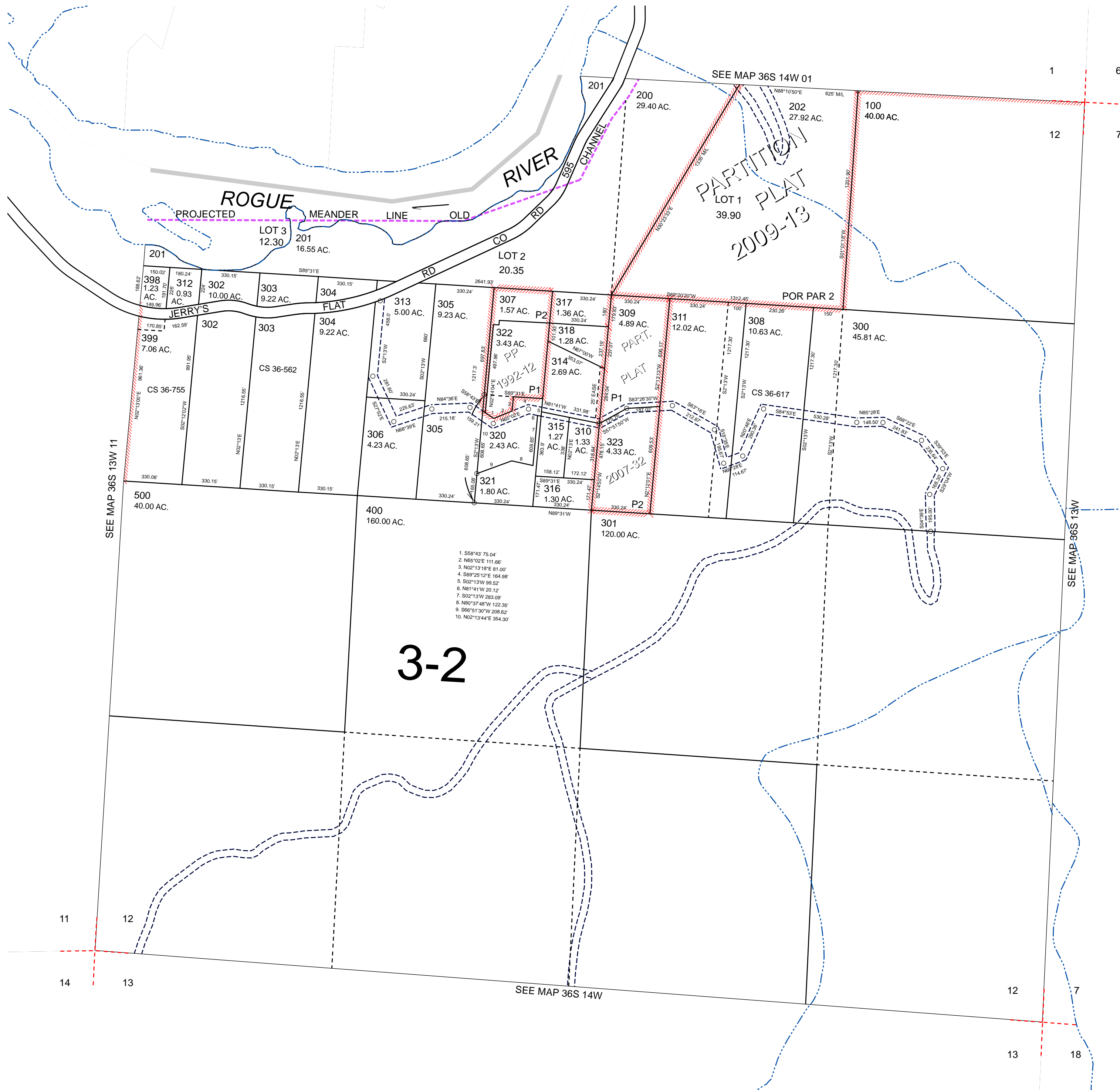
THIS MAP WAS PREPARED FOR ASSESSMENT PURPOSE ONLY



SECTION 12 T.36S. R.14W. W.M. CURRY COUNTY
1" = 400'

36S14W12

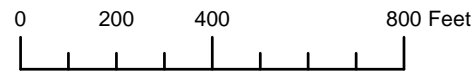
CANCELLED:
319



Revised: MA
11/29/2010

36S14W12

THIS MAP WAS PREPARED FOR ASSESSMENT PURPOSE ONLY

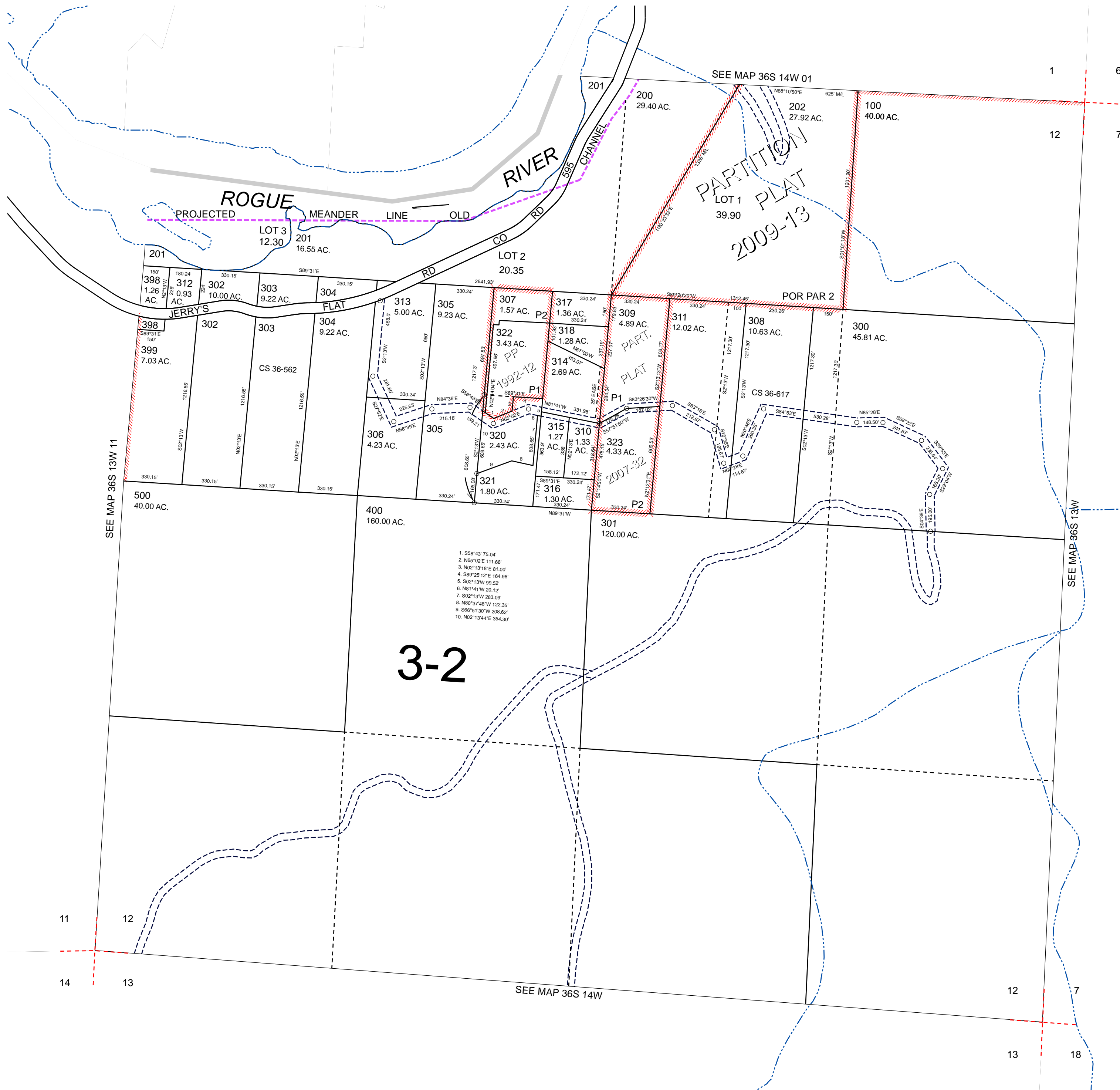


SECTION 12 T.36S. R.14W. W.M.
CURRY COUNTY

1" = 400'

36S14W12

CANCELLED:
319

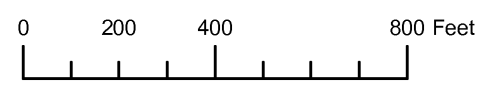


1. S58°43' 75.04'
2. N65°02'E 111.66'
3. N02°13'18"E 81.00'
4. S89°25'12"E 164.98'
5. S02°13'W 99.52'
6. N81°41'W 20.12'
7. S02°13'W 263.09'
8. N80°37'48"W 122.35'
9. S86°51'30"W 208.62'
10. N02°13'44"E 354.30'

Revised: RAA
10/22/2009

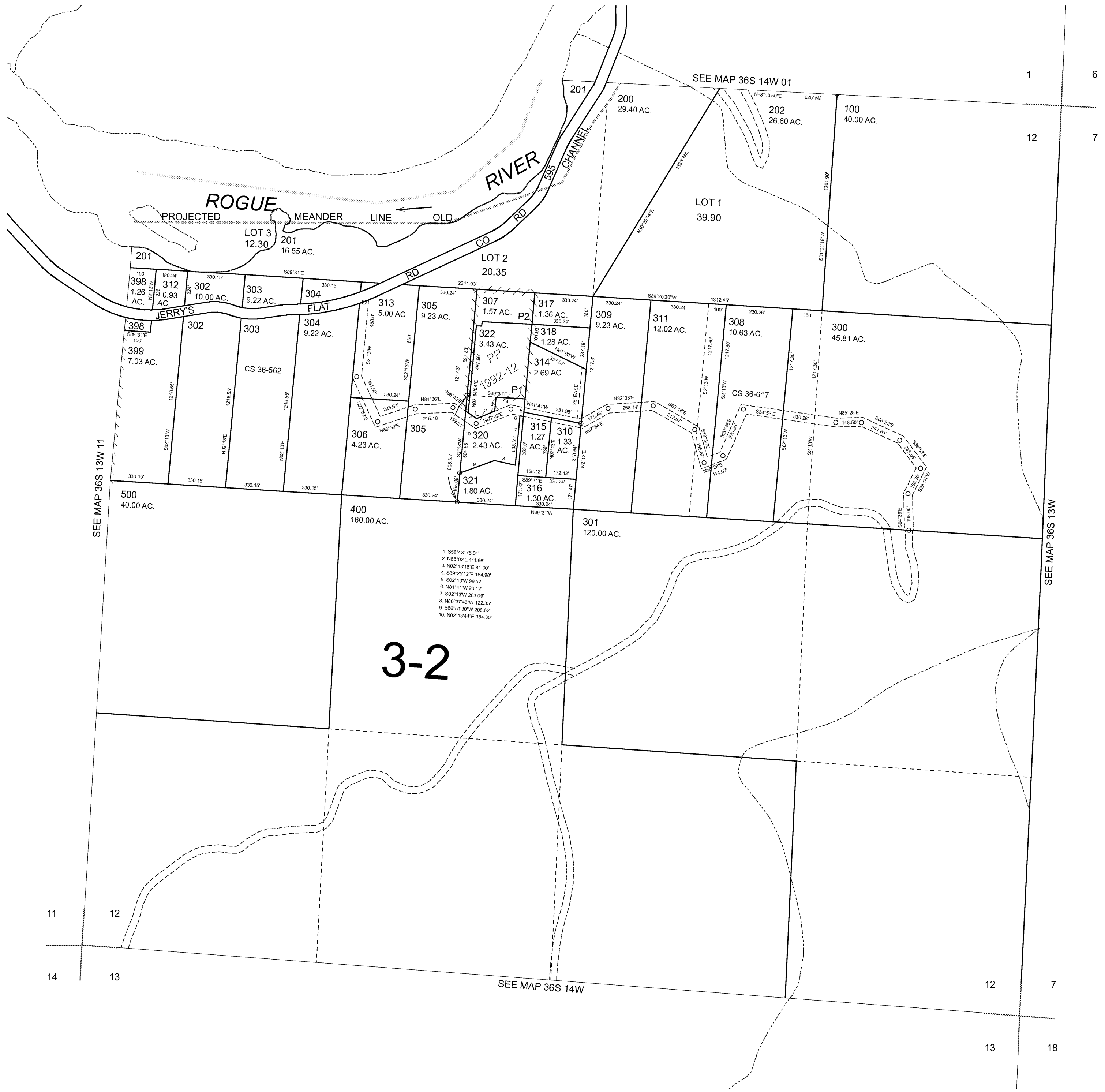
36S14W12

THIS MAP WAS PREPARED FOR ASSESSMENT PURPOSE ONLY



SECTION 12 T.36S. R.14W. W.M.
CURRY COUNTY
1" = 400'

36S 14W 12
CANCELLED NO.
319



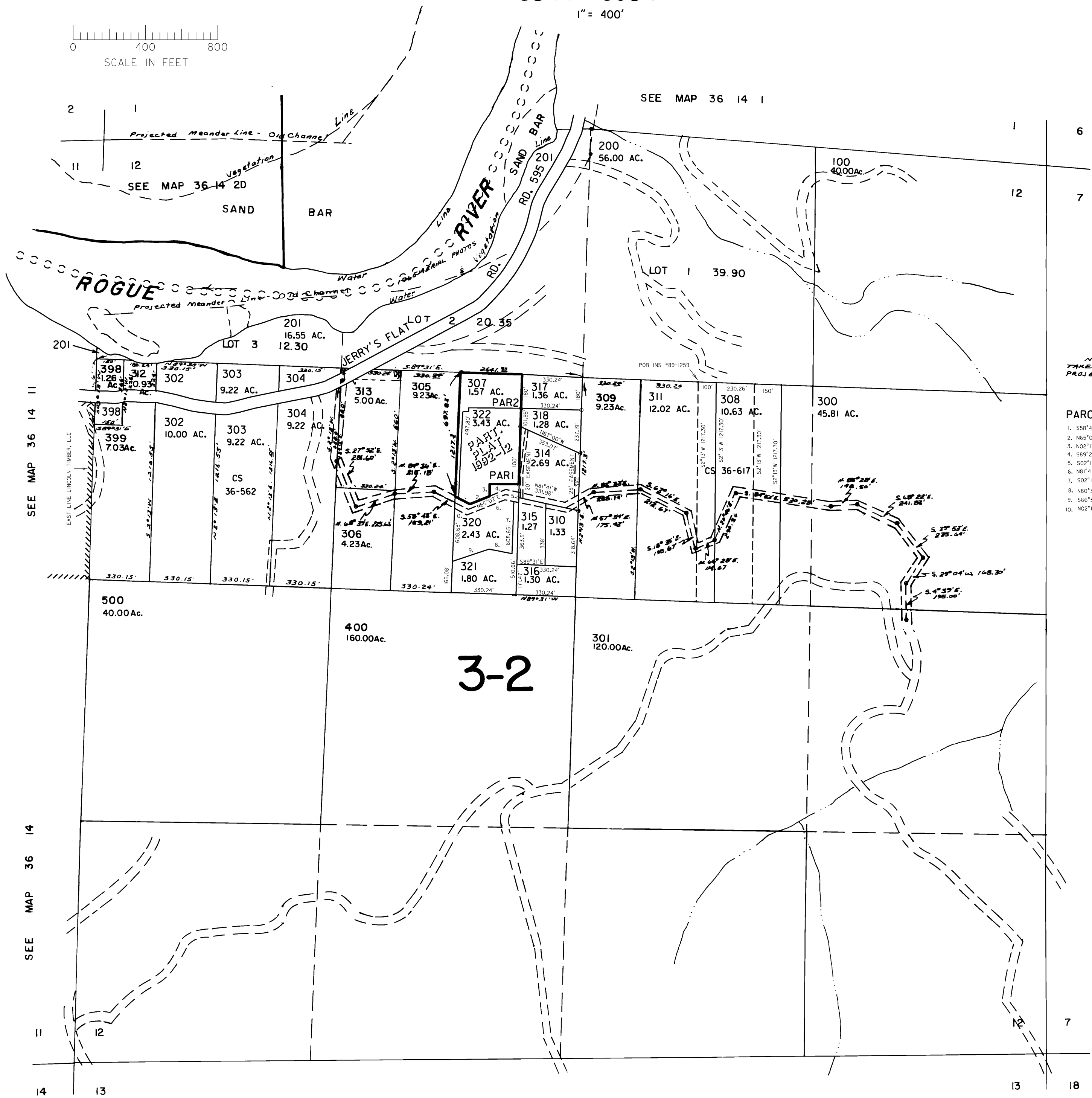
1. S58°43'75.04"
2. N65°02'E 111.66'
3. N02°13'10"E 81.00'
4. S88°29'12"E 164.88'
5. S02°13'W 99.52'
6. N81°14'W 20.12'
7. S02°13'W 293.09'
8. N80°37'48"W 122.35'
9. S66°51'30"W 208.62'
10. N02°13'44"E 354.30'

THIS MAP WAS PREPARED FOR
ASSESSMENT PURPOSE ONLY

SECTION 12 T.36S. 14W. W.M.
CURRY COUNTY

36 14 12

1" = 400'



CANCELLED NO'S
319

NOTE: CONTROL
TAKEN FROM TIMBER
PROJECTION OF 1959.

PARCEL 320

- 1. S58°43'E 75.04'
- 2. N65°02'E 111.66'
- 3. N02°13'18"E 81.00'
- 4. S89°25'12"E 164.98'
- 5. S02°13'W 99.52'
- 6. N81°41'W 20.12'
- 7. S02°13'W 283.09'
- 8. N80°37'48"W 122.35'
- 9. S66°51'30"W 208.62'
- 10. N02°13'44"E 354.30'

SEE MAP 36 13

SEE MAP 36 14

Revised
9/10/01, CS
36 14 12