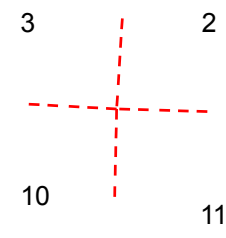
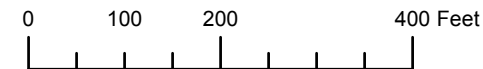
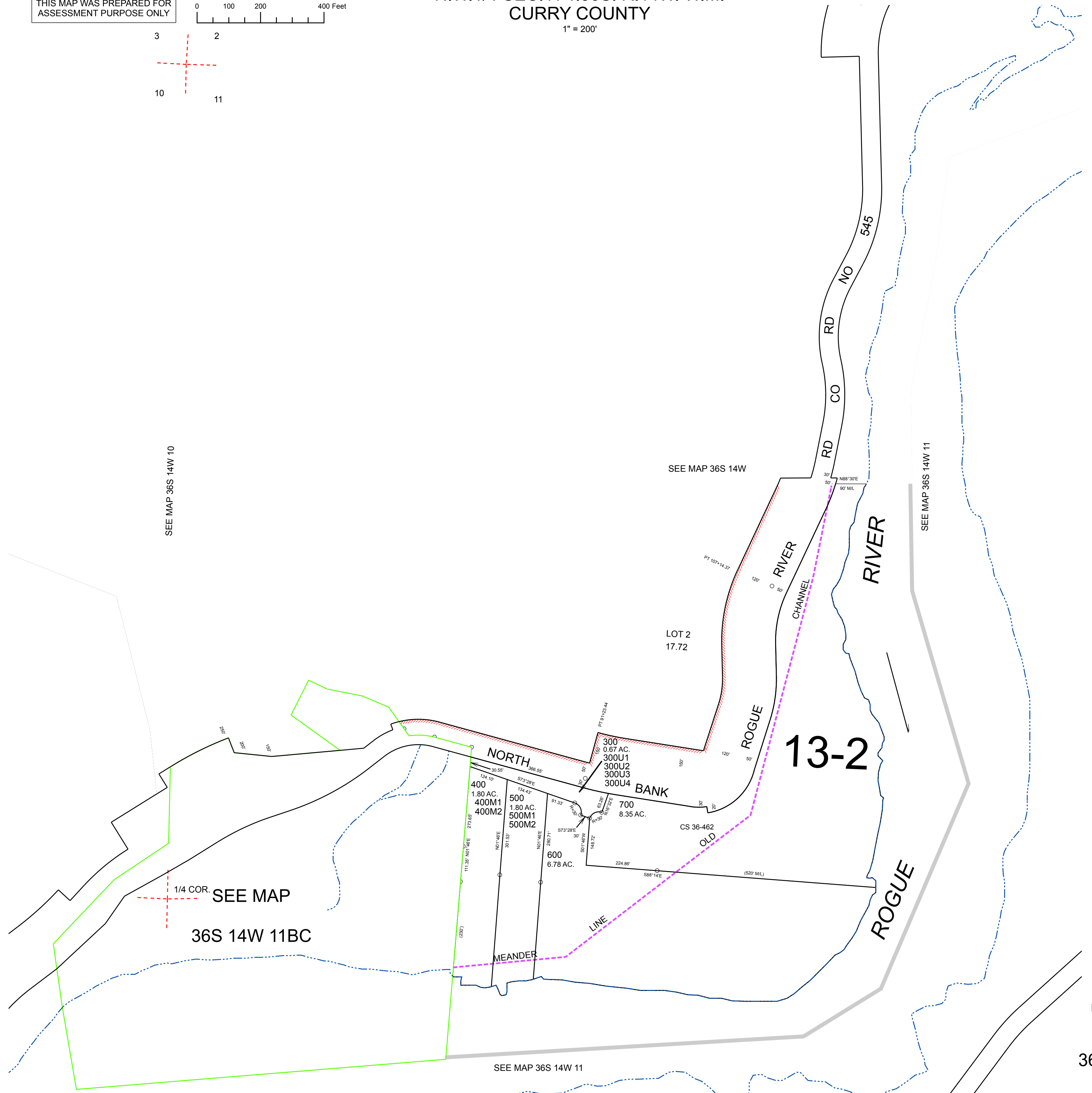


N.W.1/4 SEC.11 T.36S. R.14W. W.M.
CURRY COUNTY
1" = 200'

THIS MAP WAS PREPARED FOR
ASSESSMENT PURPOSE ONLY



CANCELLED:
100
200



SEE MAP 36S 14W 10

SEE MAP 36S 14W

SEE MAP 36S 14W 11

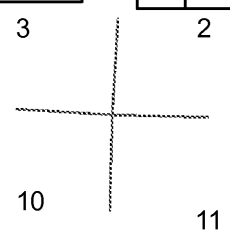
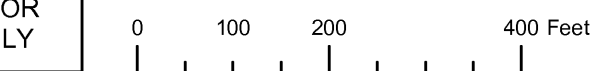
1/4 COR. SEE MAP

36S 14W 11BC

SEE MAP 36S 14W 11

Revised: RAA
10/22/2009

THIS MAP WAS PREPARED FOR ASSESSMENT PURPOSE ONLY



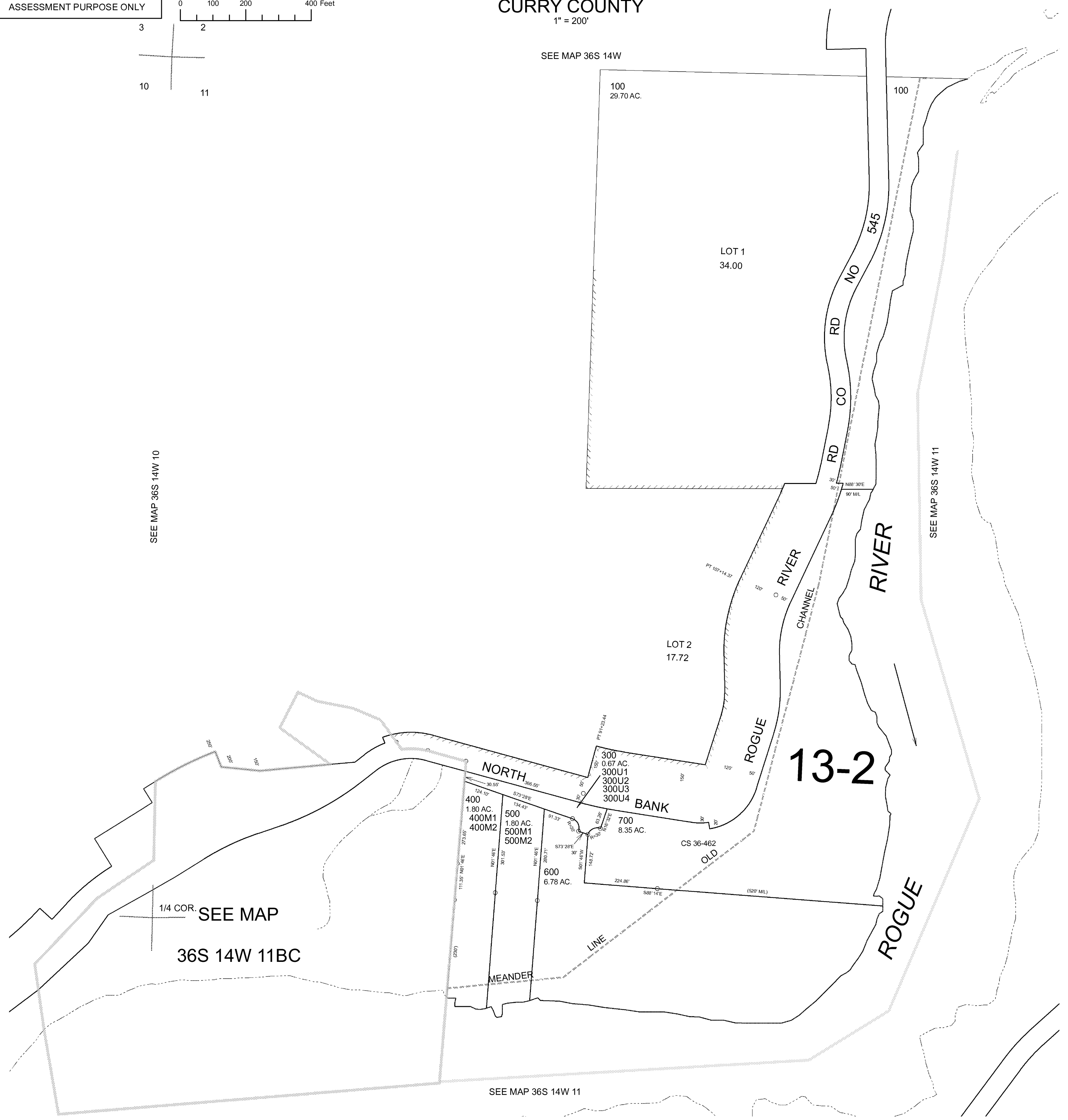
NW1/4 SECTION 11 T.36S. R.14W. W.M.
CURRY COUNTY
1" = 200'

36S 14W 11B
CANCELLED NO.
200

SEE MAP 36S 14W

SEE MAP 36S 14W 10

SEE MAP 36S 14W 11



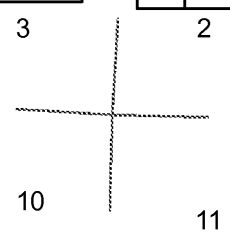
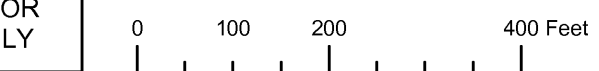
1/4 COR. SEE MAP
36S 14W 11BC

SEE MAP 36S 14W 11

13-2

Revised RAA
5/4/2007
36S 14W 11B

THIS MAP WAS PREPARED FOR ASSESSMENT PURPOSE ONLY



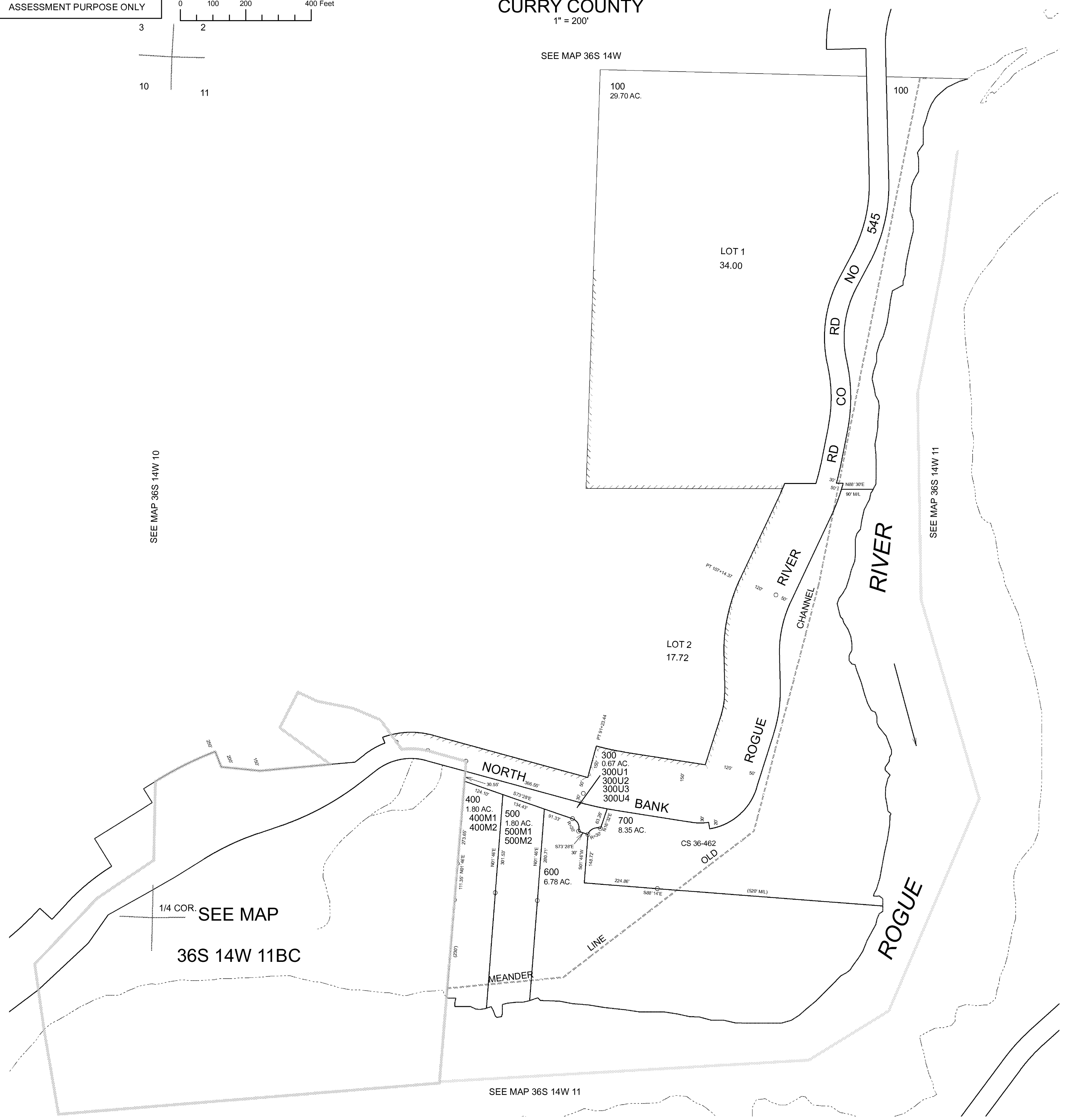
NW1/4 SECTION 11 T.36S. R.14W. W.M.
CURRY COUNTY
1" = 200'

36S 14W 11B
CANCELLED NO.
200

SEE MAP 36S 14W

SEE MAP 36S 14W 10

SEE MAP 36S 14W 11



1/4 COR. SEE MAP
36S 14W 11BC

SEE MAP 36S 14W 11

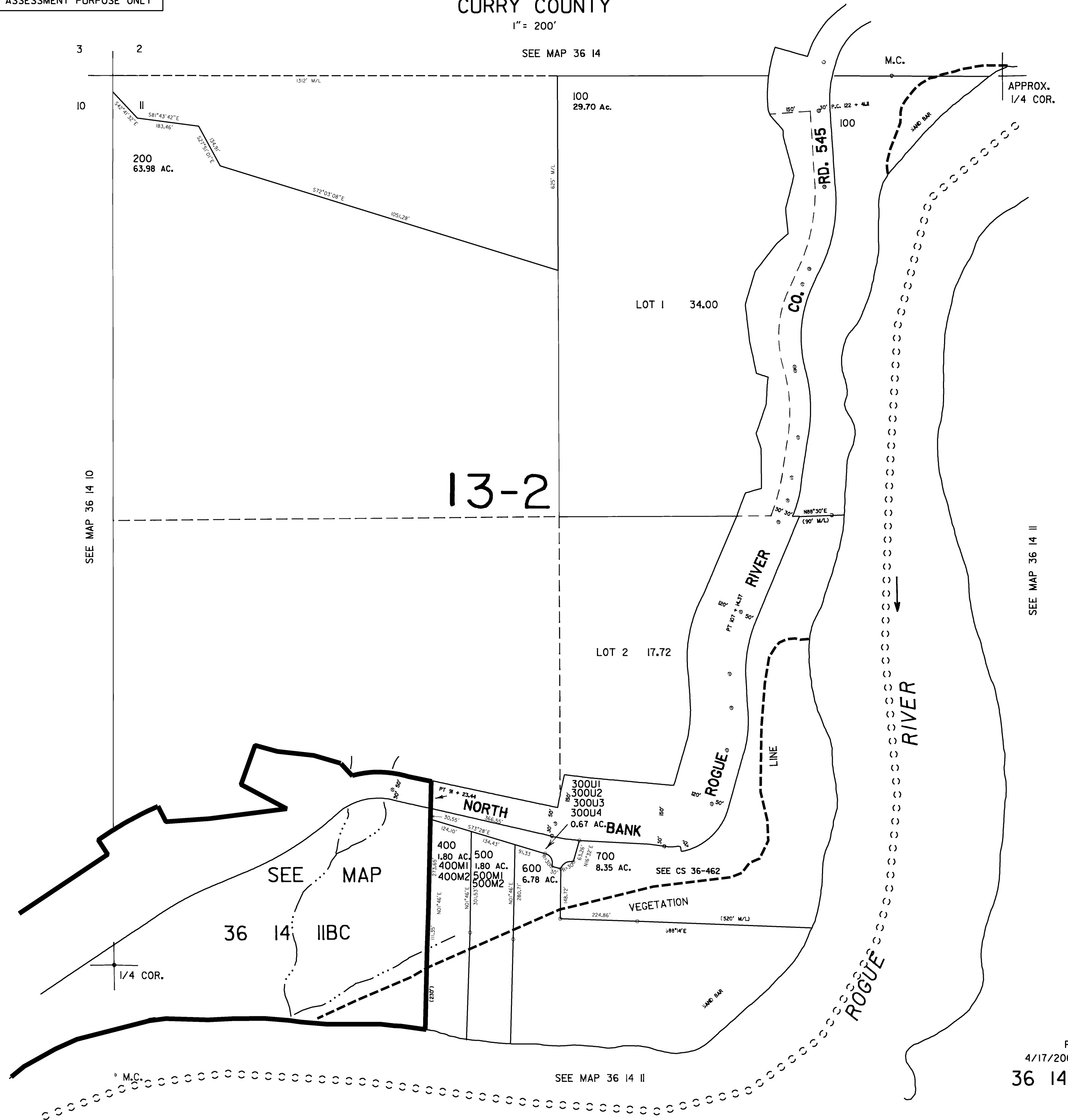
Revised RAA
4/4/2007
36S 14W 11B

THIS MAP WAS PREPARED FOR
ASSESSMENT PURPOSE ONLY

NW1/4 SEC. II T.36S. R.14W. W.M.
CURRY COUNTY

36 14 IIB

1" = 200'



3

2

SEE MAP 36 14

10

II

200
63.98 AC.

100
29.70 AC.

LOT 1 34.00

13-2

LOT 2 17.72

36 14 IIBC

SEE MAP

1/4 COR.

SEE MAP 36 14 II

APPROX.
1/4 COR.

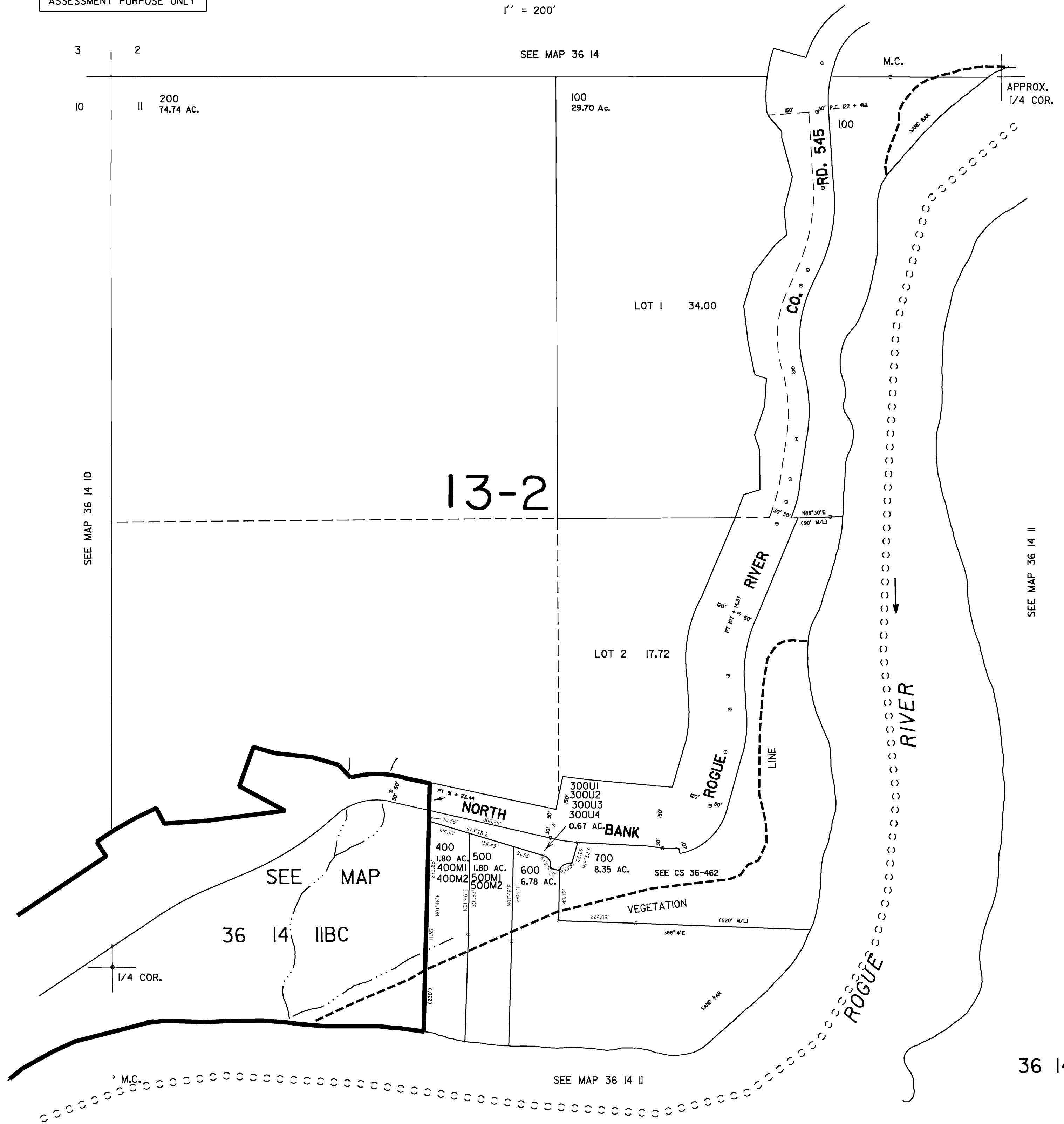
SEE MAP 36 14 II

Revised
4/17/2006, DBJ
36 14 IIB

NW1/4 SEC. II T.36S. R.14W. W.M.
CURRY COUNTY

THIS MAP WAS PREPARED FOR
ASSESSMENT PURPOSE ONLY

1" = 200'



SEE MAP 36 14 II