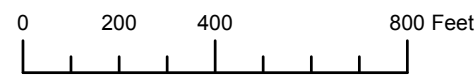


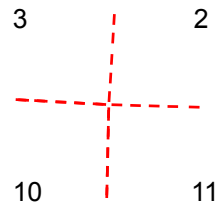
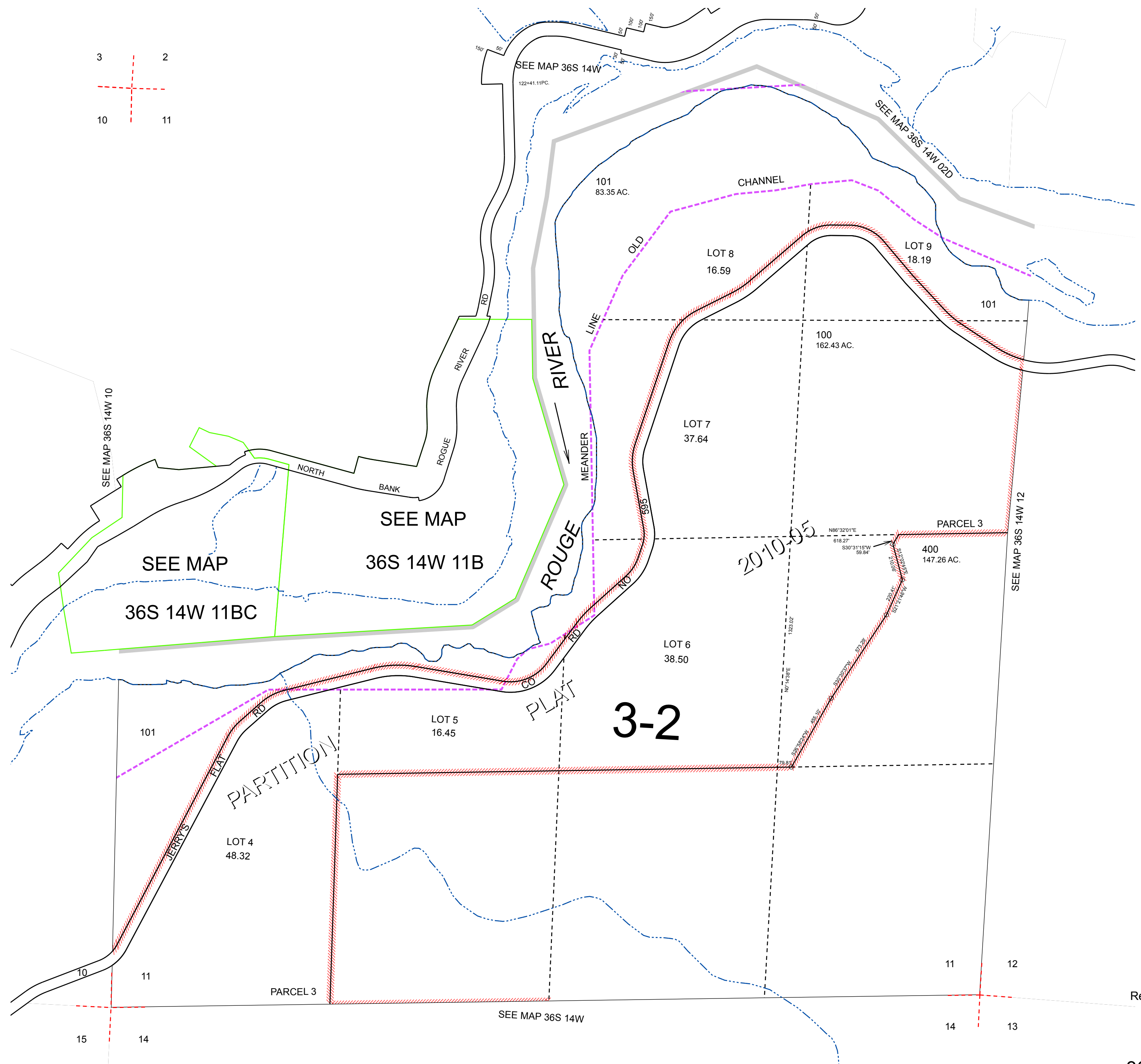
THIS MAP WAS PREPARED FOR ASSESSMENT PURPOSE ONLY



SECTION 11 T.36S. R.14W. W.M.
CURRY COUNTY
1" = 400'

36S14W11
& INDEX

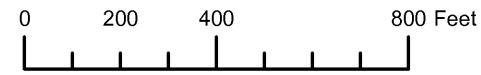
CANCELLED:
200 THRU 305



Revised: RAA
1/31/2011

& INDEX
36S14W11

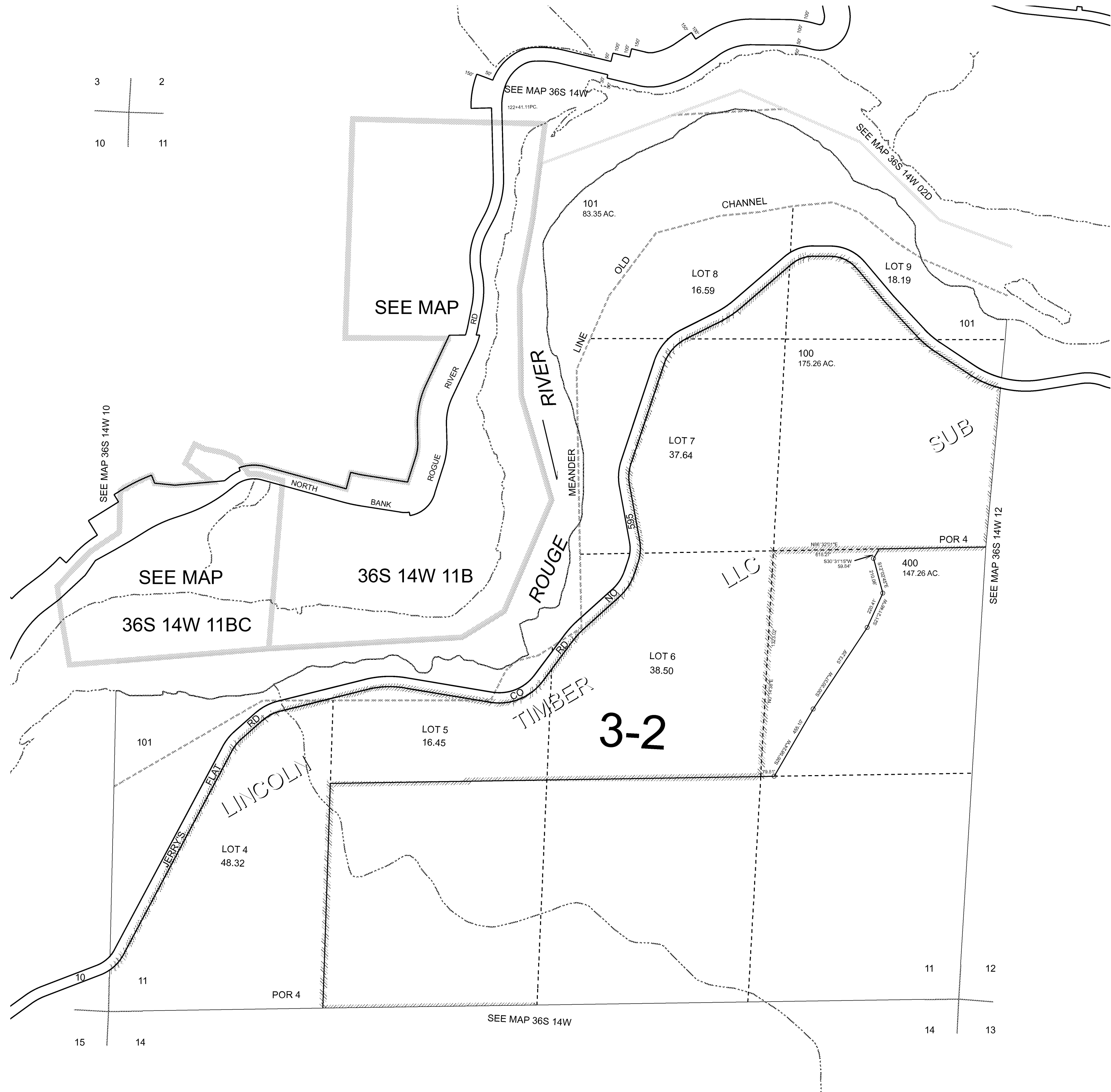
THIS MAP WAS PREPARED FOR ASSESSMENT PURPOSE ONLY



SECTION 11 T.36S. R.14W. W.M.
CURRY COUNTY
1" = 400'

36S14W11
& INDEX

CANCELLED:
200 THRU 305



Revised RAA
5/27/2008

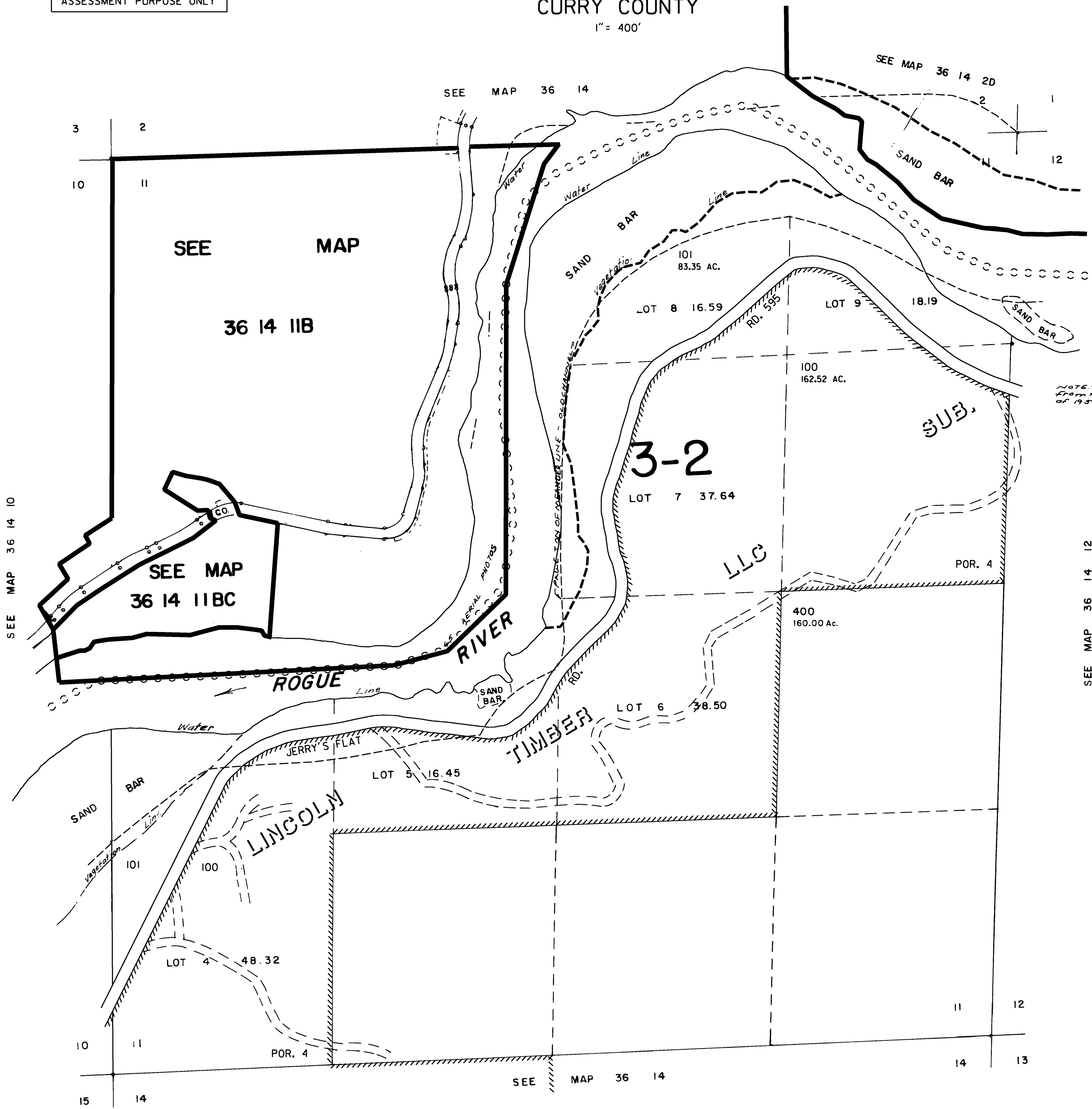
& INDEX
36S14W11

THIS MAP WAS PREPARED FOR
ASSESSMENT PURPOSE ONLY

SECTION II T.36S. R.14W. W.M.
CURRY COUNTY

1" = 400'

36 14 11
& INDEX



CANCELLED NO.
200 THRU
305

NOTE: Control taken
from timber projection
of 1939.

Revised
8/20/01, 9C

36 14 11
& INDEX