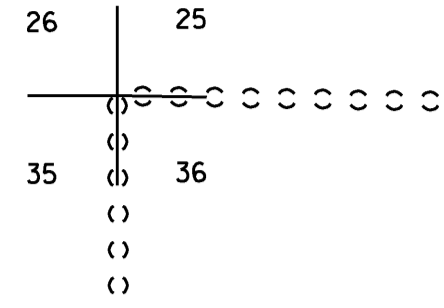


THIS MAP WAS PREPARED FOR
ASSESSMENT PURPOSE ONLY



SEC. 36 T.35S. R.14W. W.M.
CURRY COUNTY

1" = 400'



SEE MAP 35 14

25 30

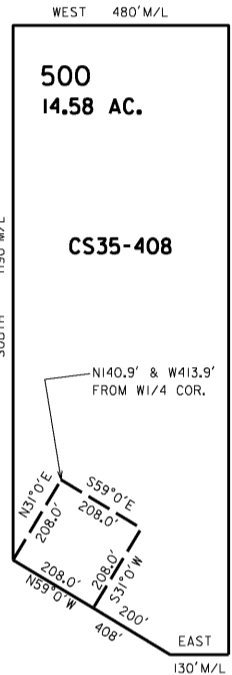
CANCELLED NOS.
300

36 31

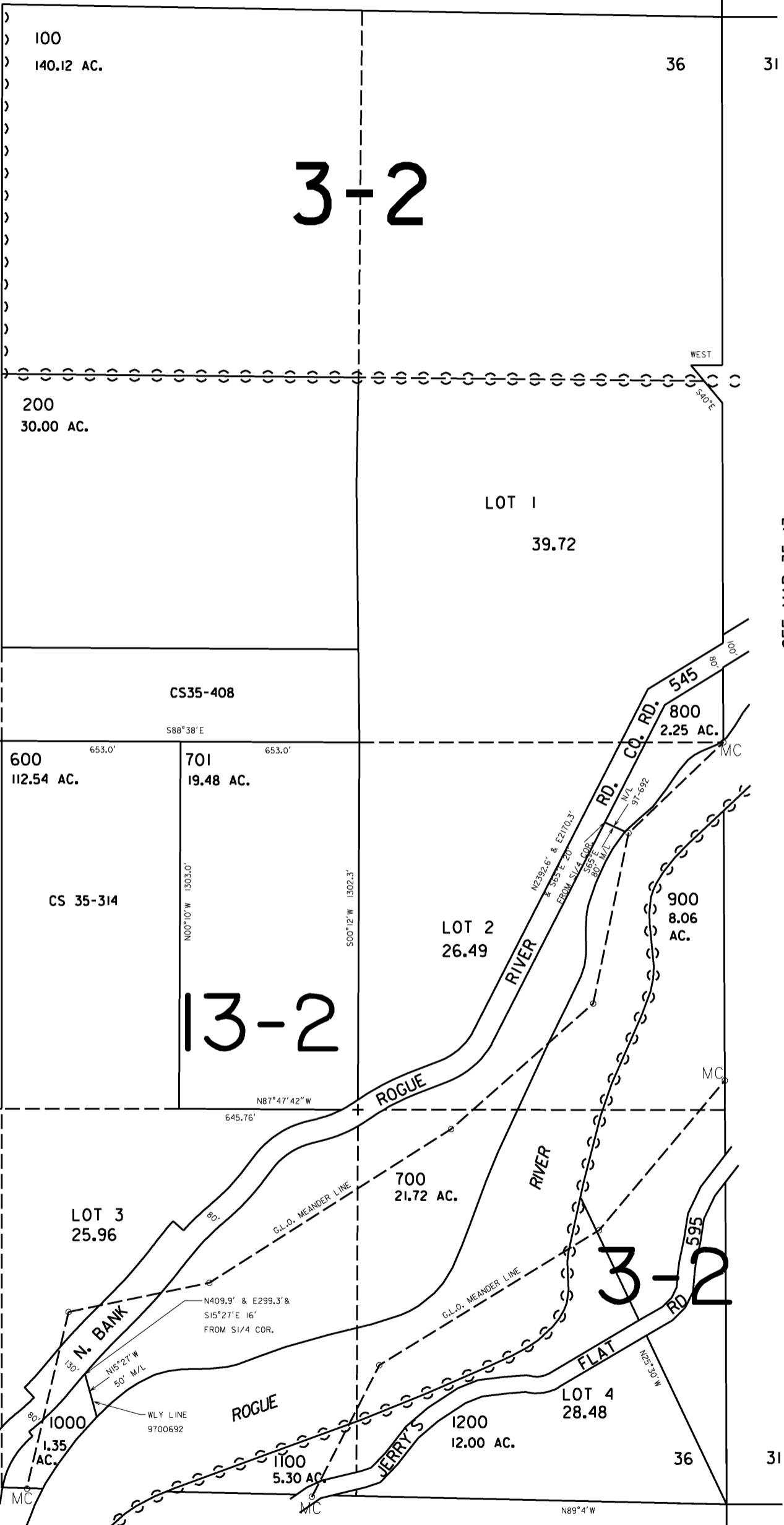
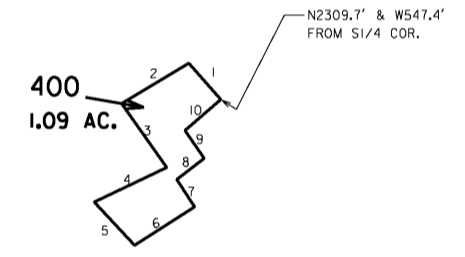
3-2

PARCEL 400

- 1. N41°38'W 108.18'
- 2. S59°02'W 174.46'
- 3. S35°22'E 173.85'
- 4. S64°22'W 178.60'
- 5. S42°51'E 131.22'
- 6. N57°36'E 159.08'
- 7. N33°19'W 73.56'
- 8. N53°04'E 77.28'
- 9. N34°34'W 75.81'
- 10. N49°11'E 104.63'



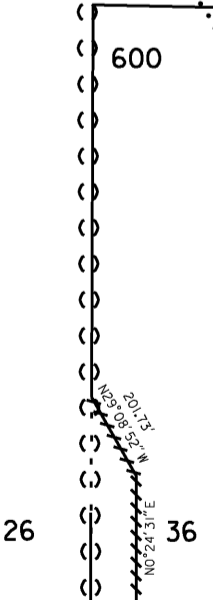
SEE MAP 35 14



SEE MAP 35 13

13-2

3-2



SEE MAP 36 14

36 31

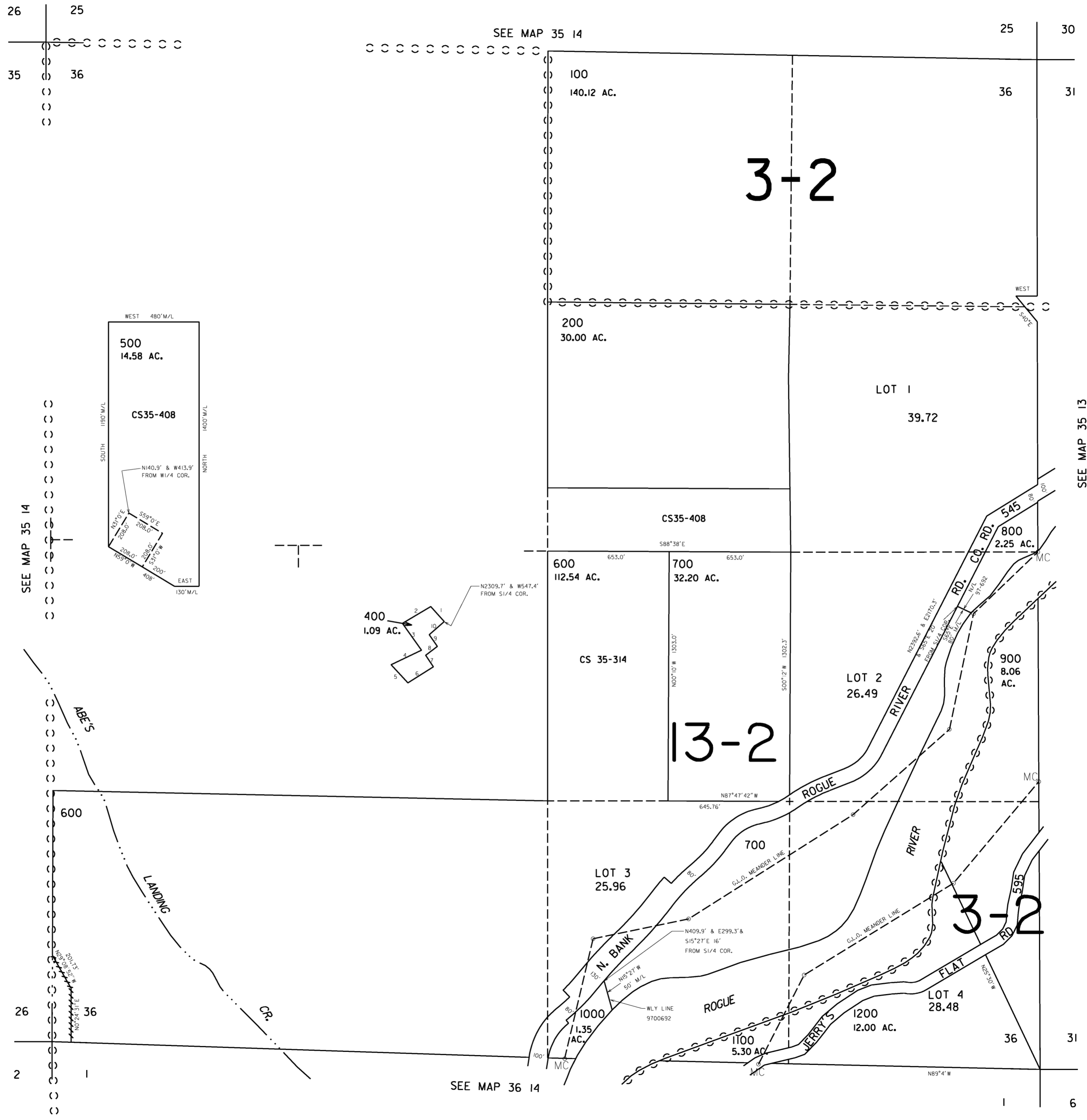
Revised
5/17/2010 RAA

THIS MAP WAS PREPARED FOR
ASSESSMENT PURPOSE ONLY

SEC. 36 T.35S. R.14W. W.M.
CURRY COUNTY

1" = 400'

35 14 36



CANCELLED NOS.
300

PARCEL 400

- 1. N41°38'W 108.18'
- 2. S59°02'W 174.46'
- 3. S35°22'E 173.85'
- 4. S64°22'W 178.60'
- 5. S42°57'E 131.22'
- 6. N57°36'E 159.08'
- 7. N33°19'W 73.56'
- 8. N53°04'E 77.28'
- 9. N34°34'W 75.81'
- 10. N49°11'E 104.63'

Revised
5/24/2005, DBJ
35 14 36