

THIS MAP WAS PREPARED FOR ASSESSMENT PURPOSE ONLY

SW1/4 SEC. 31 T.35S. R.14W. W.M. CURRY COUNTY

35 14 31C

1" = 200'



Note: The N. 100 ft. of Nesika St. is now vested by Ord. 14369 and recorded in DU 74-342



- CANC. NO. 104, 108, 110U1, 110U2, 112, 112U1, 112U2, 114U1, 114U2, 121, 127, 134, 201, 208, 209, 300, 802, 903, 904, 1504 THRU, 1506, 2101, 2708, 2712, 3203

PARCEL 135 1. 584'17.53" W 20.39' 2. 572'41.08" W 40.72' 3. 553'48.30" W 25.24' 4. 526'28.39" W 28.51' 5. 514'50.46" W 65.48' 6. 590'00.00" W 32.55'

SEE MAP 35 14

POR. PARTITION PLAT 2006-43

12-7

See Map 35 15 36 D

SEE MAP 36 14

POR. PAR.3

Revised 1/26/2007, RAA

35 14 31C

THIS MAP WAS PREPARED FOR ASSESSMENT PURPOSE ONLY

SW1/4 SEC. 31 T.35S. R.14W. W.M. CURRY COUNTY

35 14 31C

1" = 200'



Note: The N. 100 ft of Nesika St is now vested by Ord. 14369 and recorded in DU 74-342



- CANC. NO. 104, 108, 110U1, 110U2, 112, 112U1, 112U2, 114U1, 114U2, 121, 127, 134, 201, 208, 209, 300, 802, 903, 904, 1504 THRU, 1506, 2101, 2708, 2712, 3203

PARCEL 135 1. 584°17'53" W 20.39' 2. S72°41'08" W 40.72' 3. S53°48'30" W 25.24' 4. S26°28'39" W 28.51' 5. S14°50'46" W 65.48' 6. S90°00'00" W 32.55'

SEE MAP 35 14

POR. PARTITION PLAT 2006-43

12-7

See Map 35 15 36 D

SEE MAP 36 14

POR. PAR.3

Revised 10/23/2006, RAA

35 14 31C

THIS MAP WAS PREPARED FOR ASSESSMENT PURPOSE ONLY

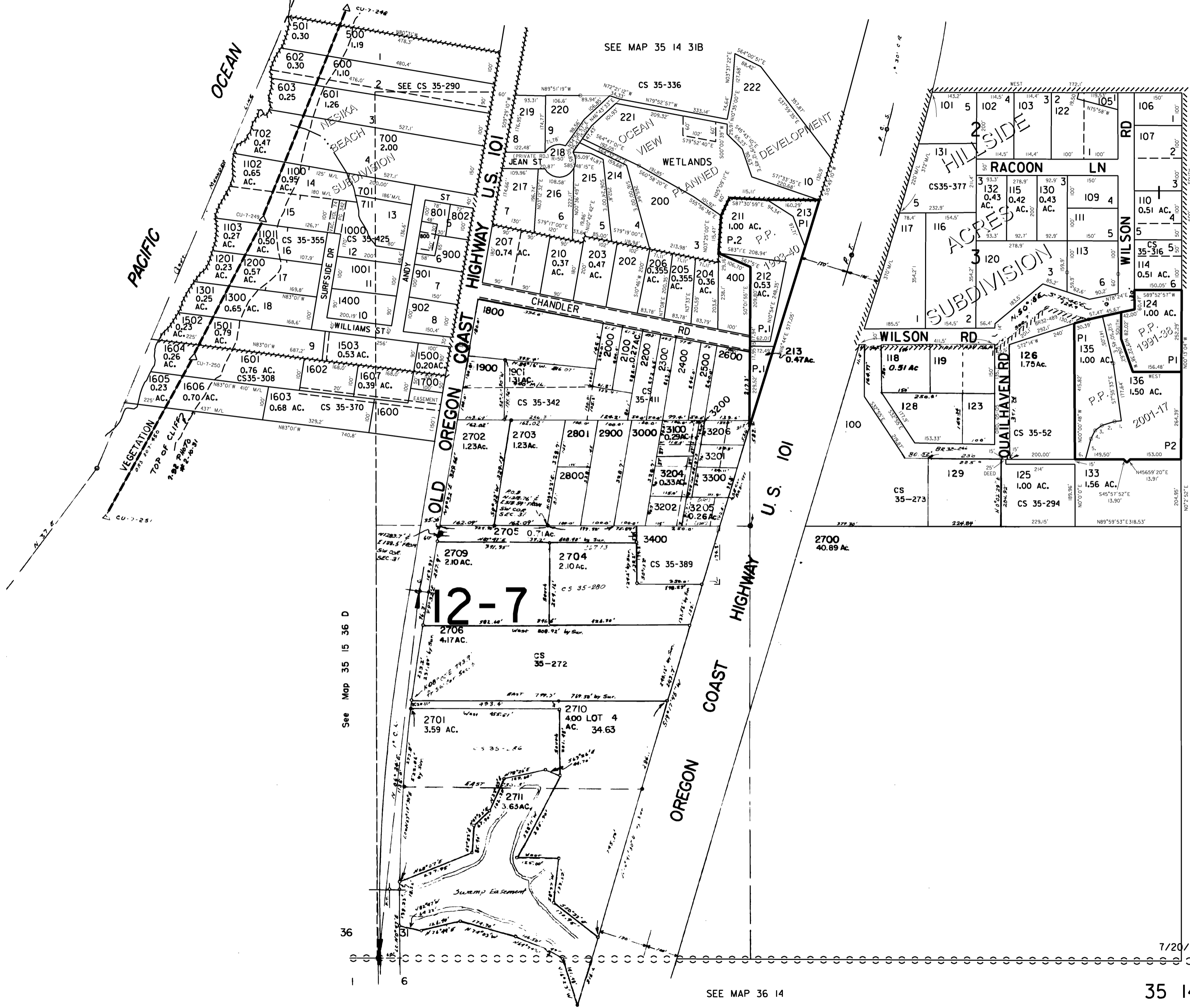
SW1/4 SEC. 31 T.35S. R.14W. W.M. CURRY COUNTY

35 14 31C



1" = 200'

Note: The N 100 ft of Nesika St is now vacated by Ord. No 369 and recorded in CV 74-342



- CANC. NO. 104, 108, 110U1, 110U2, 112, 112U1, 112U2, 114U1, 114U2, 121, 127, 134, 201, 208, 209, 300, 802, 903, 904, 1504 THRU, 1506, 2101, 2708, 2712, 3203

PARCEL 135 1. S84°11'53"W 20.99', 2. S72°41'08"W 40.72', 3. S53°48'30"W 25.24', 4. S26°28'39"W 28.51', 5. S14°50'46"W 65.48', 6. S90°00'00"W 32.55'

SEE MAP 35 14

Revised 7/20/2006, RAA

35 14 31C

SEE MAP 36 14

See Map 35 15 36 D

12-7

36

6

Vertical text on the left margin: \$DATES\$, \$FILES\$, \$USERNAMES\$

THIS MAP WAS PREPARED FOR ASSESSMENT PURPOSE ONLY

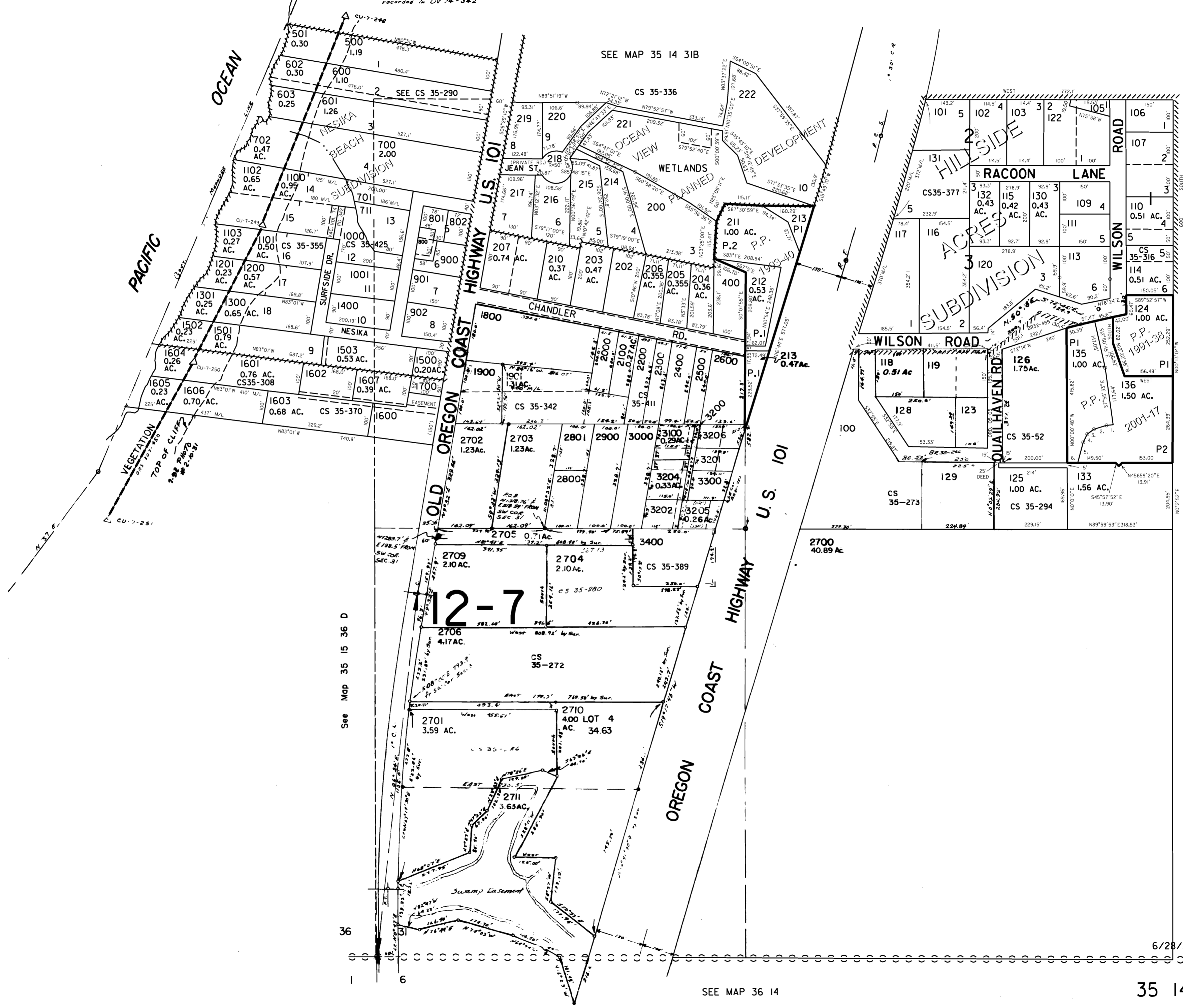
SW1/4 SEC. 31 T.35S. R.14W. W.M. CURRY COUNTY

35 14 31C

1" = 200'



Note:
The N 100 ft of Nesika St is
now vacated by Ord. No 369 and
recorded in DV 74-342



- CANC. NO.
- 104
- 108
- 110U1
- 110U2
- 112
- 112U1
- 112U2
- 114U1
- 114U2
- 121
- 127
- 134
- 201
- 208
- 209
- 300
- 802
- 903
- 904
- 1504 THRU
- 1506
- 2101
- 2708
- 2712
- 3203

PARCEL I35
 1. 584°17'53"W 20.39'
 2. 572°41'08"W 40.72'
 3. 53°48'30"W 25.24'
 4. 526°28'39"W 28.57'
 5. 514°50'46"W 65.48'
 6. 530°00'00"W 32.55'

SEE MAP 35 14

See Map 35 15 36 D

36

6

SEE MAP 36 14

Revised
6/28/2005, DBJ

35 14 31C