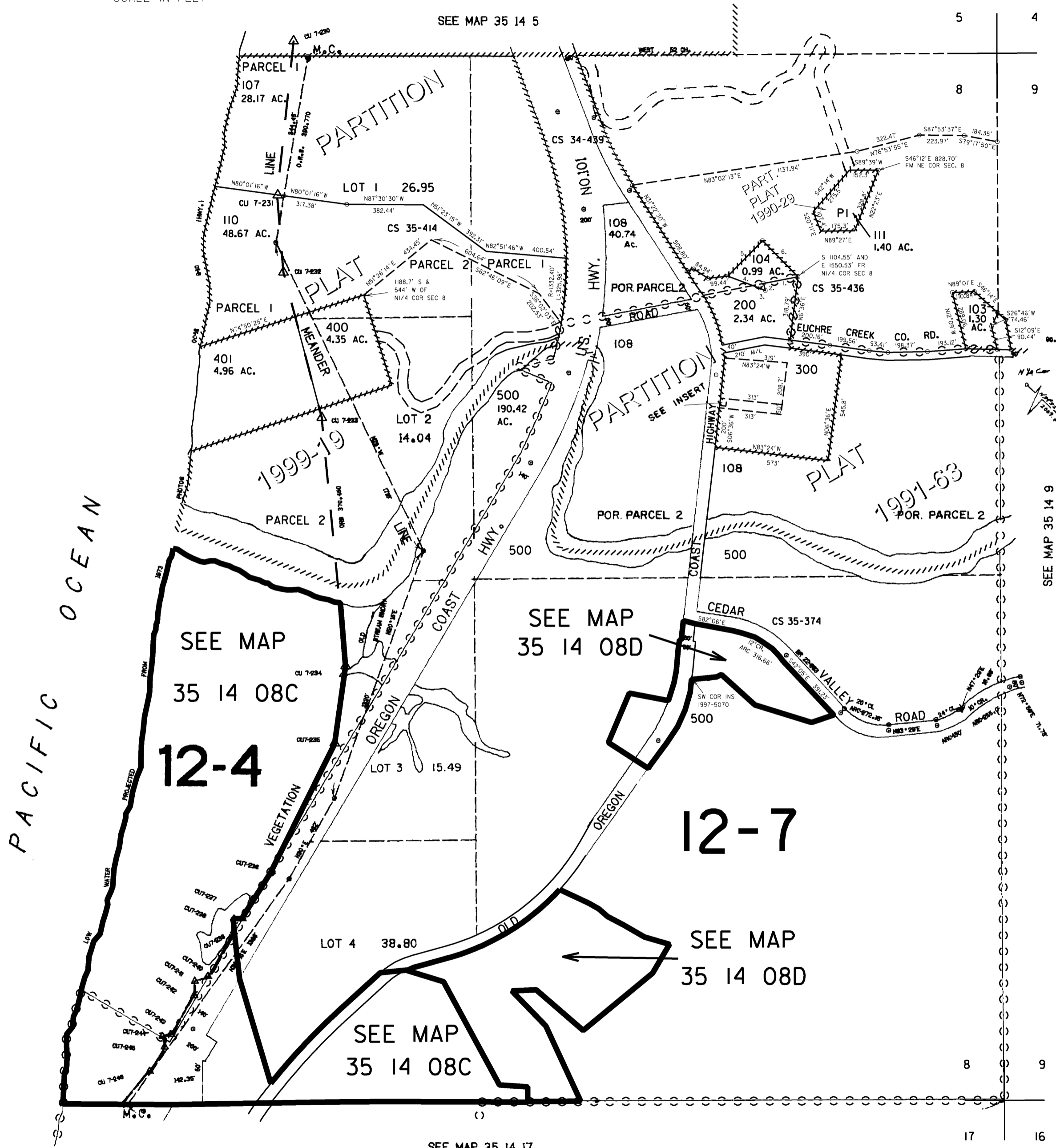
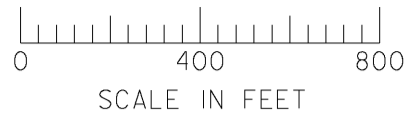


THIS MAP WAS PREPARED FOR
ASSESSMENT PURPOSE ONLY

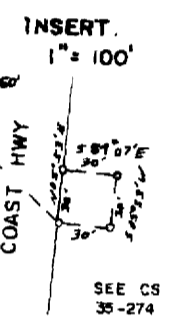
SECTION 8 T.35S. R.14W. W.M.
CURRY COUNTY

1" = 400'



CANCELLED NO.'S
100
101
102
105
106
109
201
500A1
501 THRU 900

PARCEL 104
BEGIN AT A PT S 1104.55' AND
E 1550.53' FROM N1/4 COR SEC 8
1. S75°15'W 171.23'
2. S47°31'E 35.4'
3. N76°08'W 32.6'
4. N65°54'W 172.71'
5. N44°E 249.44'
6. S45°00'E 252.97'



12-4

12-7

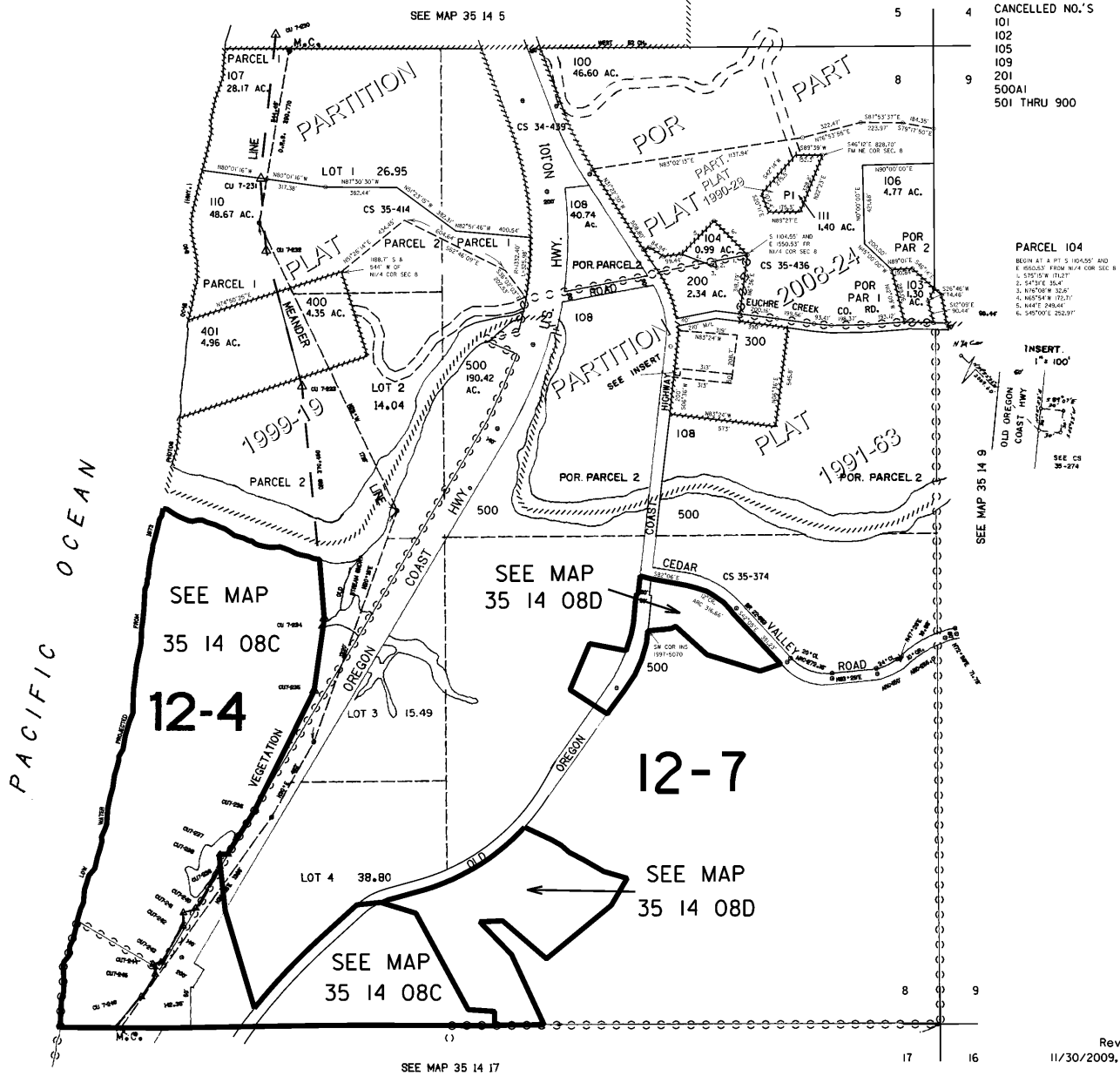
Revised
12/17/2009, RAA

THIS MAP WAS PREPARED FOR
ASSESSMENT PURPOSE ONLY

SECTION 8 T.35S. R.14W. W.M.
CURRY COUNTY

35 14 8

1" = 400'



PARCEL 104
BEGIN AT A POINT S. 104°00' 00" W. 8' 00" FROM N.W. COR. SEC. 8.
1. S. 57°10' W. 71.21'
2. S. 47°10' W. 20.4'
3. N. 75°50' W. 32.4'
4. N. 65°54' W. 172.11'
5. N. 44°17' 24.44"
6. S. 45°00' E. 292.31'

INSERT
1" = 100'
SEE CH
38-274

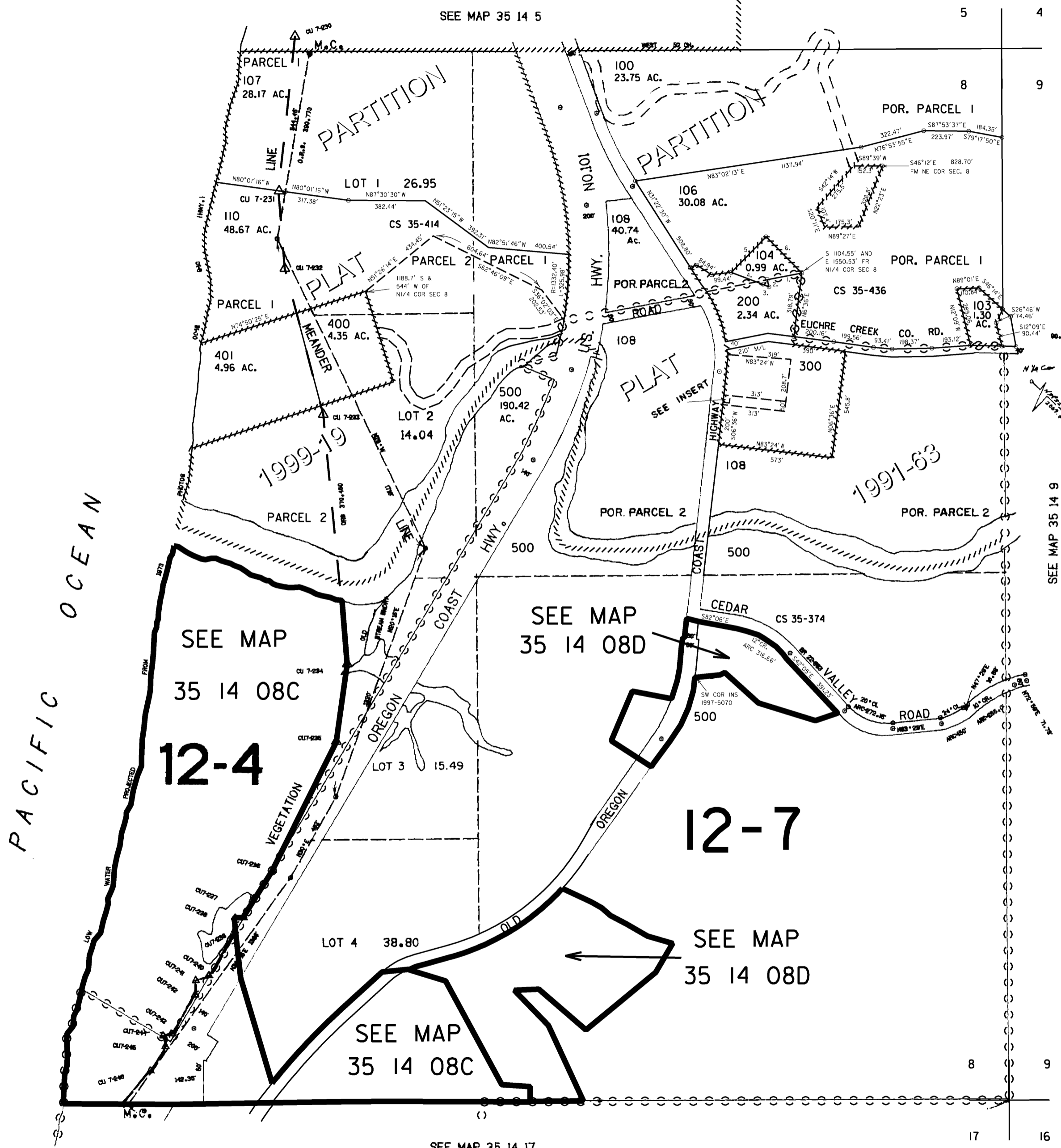
Revised
11/30/2009, RAA

35 14 8

THIS MAP WAS PREPARED FOR
ASSESSMENT PURPOSE ONLY

SECTION 8 T.35S. R.14W. W.M.
CURRY COUNTY

1" = 400'



CANCELLED NO.'S
101
102
105
109
201
500A1
501 THRU 900

PARCEL 104
BEGIN AT A PT S 1104.55' AND
E 1550.53' FROM N1/4 COR SEC 8
1. S75°15'W 171.23'
2. S47°31'E 35.4'
3. N76°08'W 32.6'
4. N65°54'W 172.71'
5. N44°E 249.44'
6. S45°00'E 252.97'

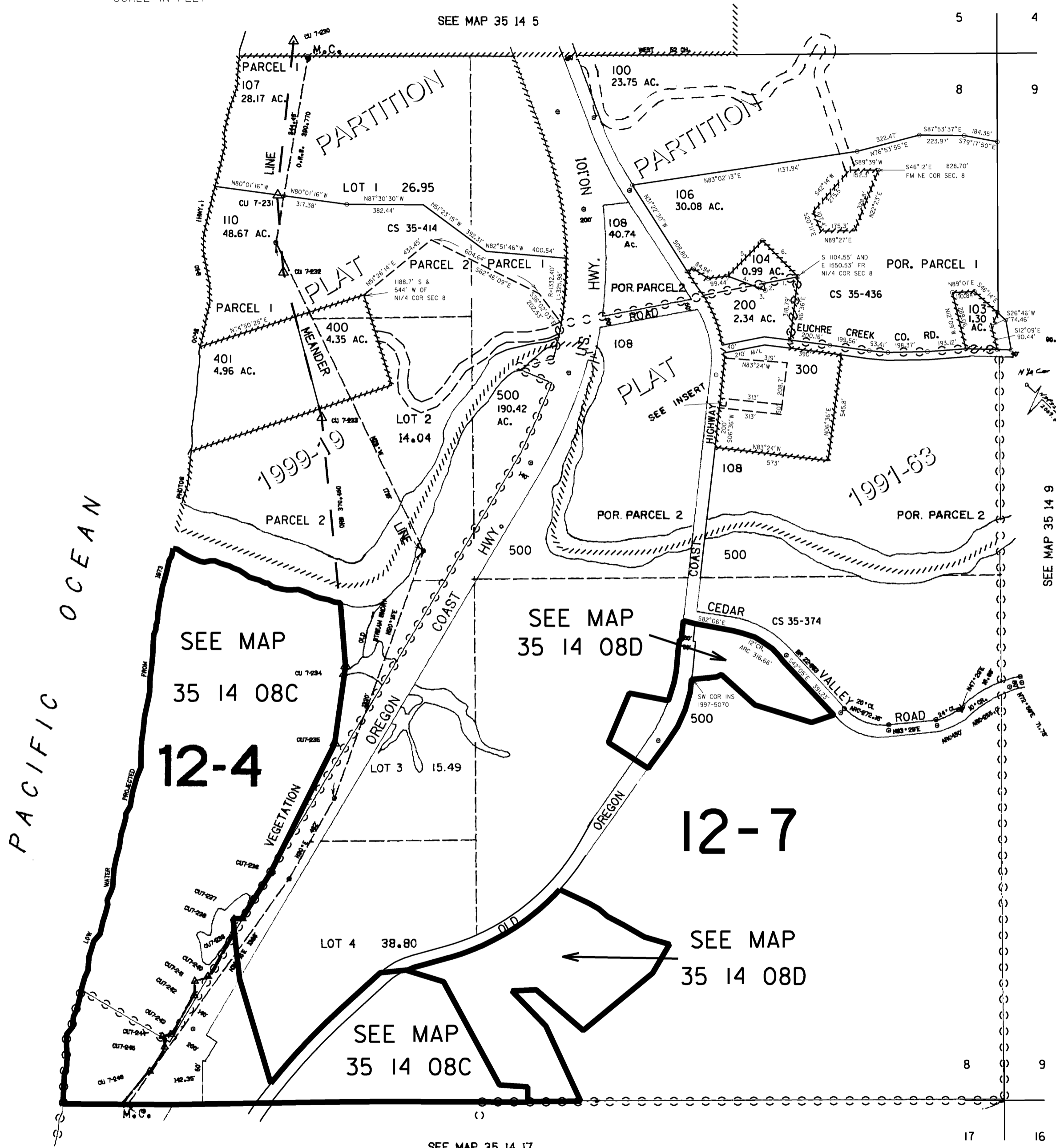
INSERT.
1" = 100'
SEE CS
35-274

Revised
9/18/2008, RAA

THIS MAP WAS PREPARED FOR
ASSESSMENT PURPOSE ONLY

SECTION 8 T.35S. R.14W. W.M.
CURRY COUNTY

1" = 400'



CANCELLED NO.'S
101
102
105
109
201
500A1
501 THRU 900

PARCEL 104
BEGIN AT A PT S 1104.55' AND
E 1550.53' FROM N1/4 COR SEC 8
1. S75°15'W 171.23'
2. S47°31'E 35.4'
3. N76°08'W 32.6'
4. N65°54'W 172.71'
5. N44°E 249.44'
6. S45°00'E 252.97'

INSERT
1" = 100'
SEE CS
35-274

12-4

12-7

SEE MAP
35 14 08C

SEE MAP
35 14 08D

SEE MAP
35 14 08D

SEE MAP
35 14 08C

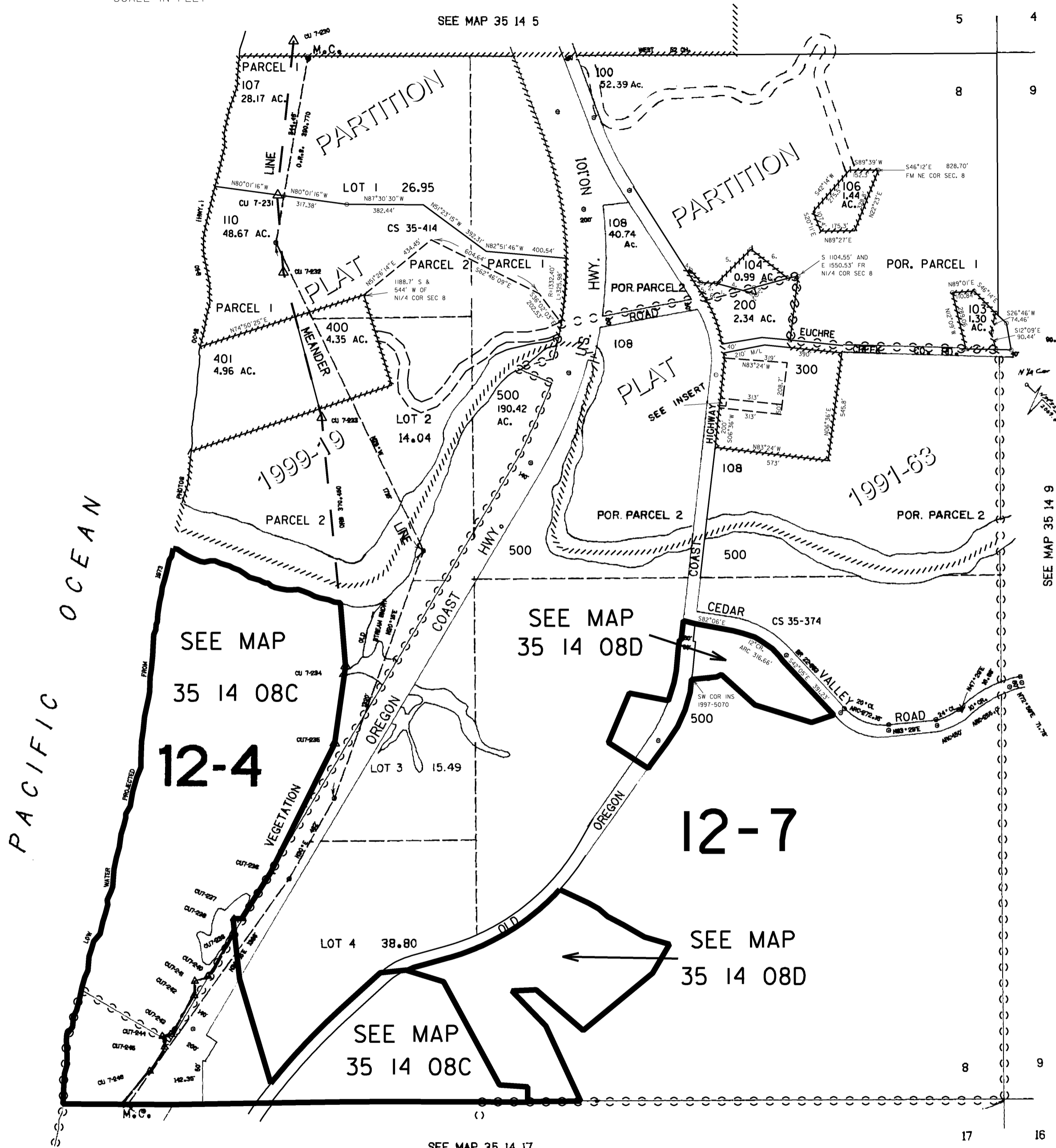
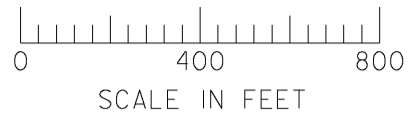
SEE MAP 35 14 17

Revised
5/02/2008, RAA

THIS MAP WAS PREPARED FOR
ASSESSMENT PURPOSE ONLY

SECTION 8 T.35S. R.14W. W.M.
CURRY COUNTY

1" = 400'



CANCELLED NO.'S
101
102
105
109
201
500A1
501 THRU 900

PARCEL 104
BEGIN AT A PT S 1104.55' AND
E 1550.53' FROM N1/4 COR SEC 8
1. S75°15'W 171.23'
2. S47°31'E 35.4'
3. N76°08'W 32.6'
4. N65°54'W 172.71'
5. N44°E 249.44'
6. S45°00'E 252.97'

INSERT.
1" = 100'
SEE CS
35-274

12-4

12-7

SEE MAP
35 14 08C

SEE MAP
35 14 08D

SEE MAP
35 14 08D

SEE MAP
35 14 08C

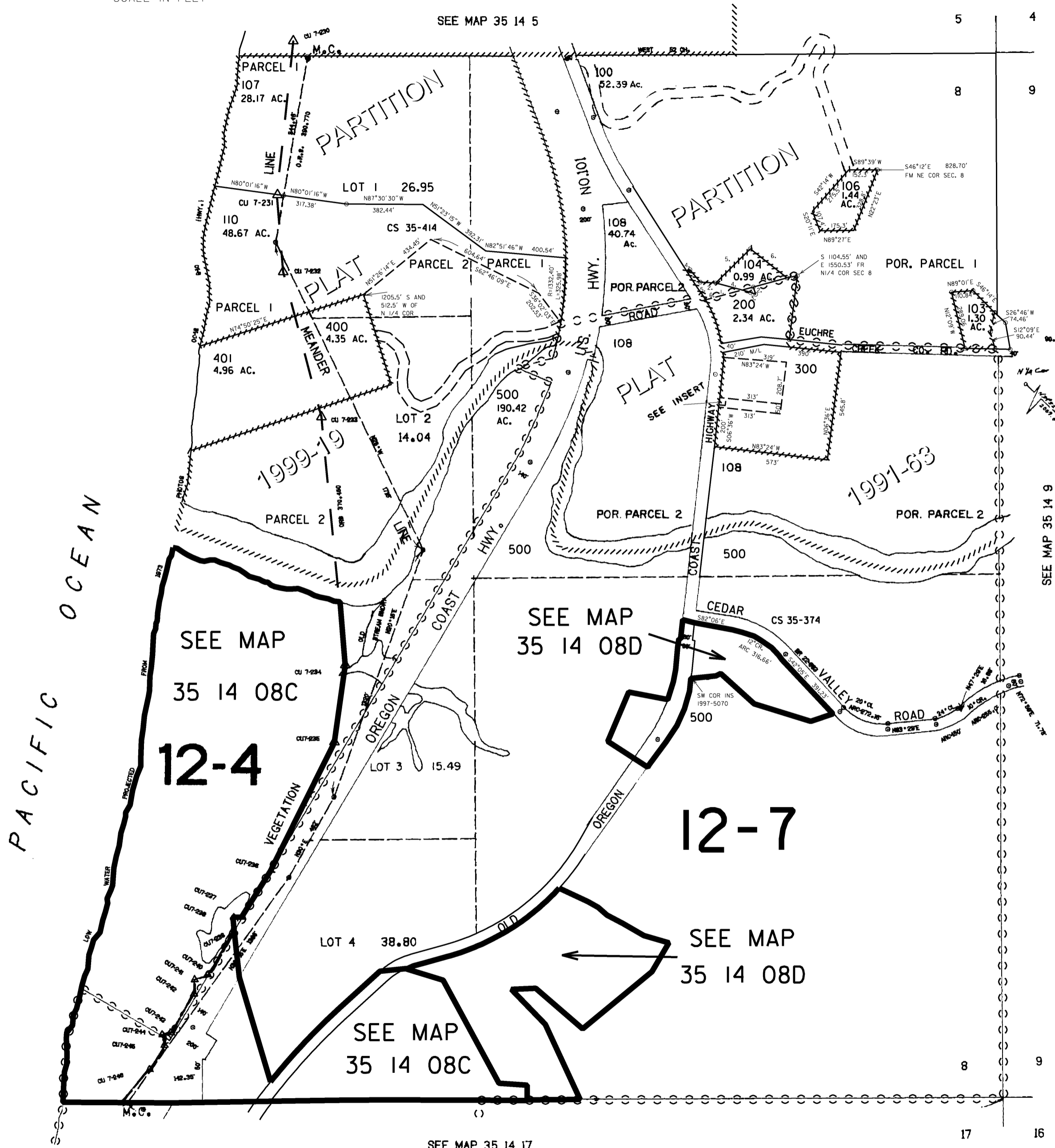
SEE MAP 35 14 17

Revised
11/7/2006, RAA

THIS MAP WAS PREPARED FOR
ASSESSMENT PURPOSE ONLY

SECTION 8 T.35S. R.14W. W.M.
CURRY COUNTY

1" = 400'



CANCELLED NO.'S
101
102
105
109
201
500A1
501 THRU 900

PARCEL 104
BEGIN AT A PT S 1104.55' AND
E 1550.53' FROM N1/4 COR SEC 8
1. S75°15'W 171.23'
2. S47°31'E 35.4'
3. N76°08'W 32.6'
4. N65°54'W 172.71'
5. N44°E 249.44'
6. S45°00'E 252.97'

INSERT.
1" = 100'
SEE CS
35-274

12-4

12-7

Revised
10/18/2006, RAA

