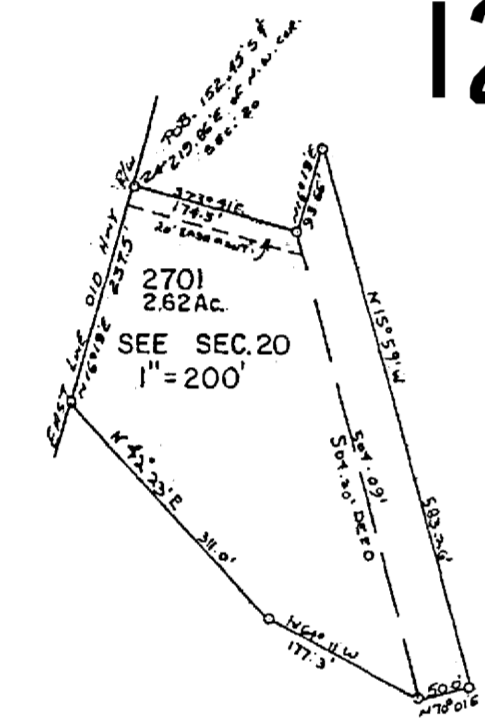
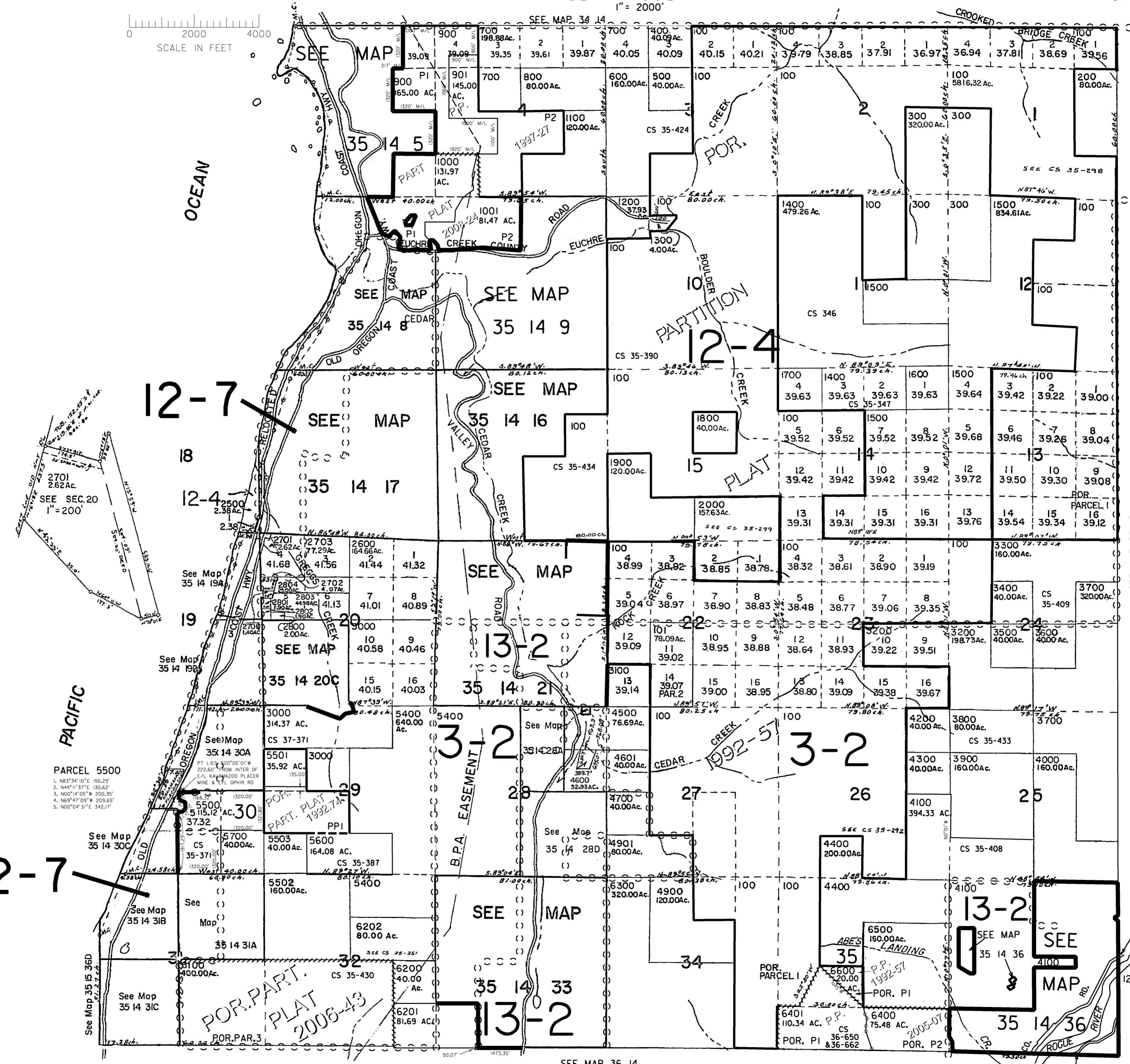
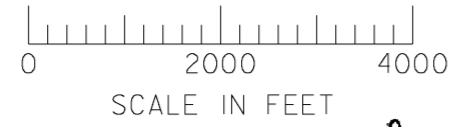


THIS MAP WAS PREPARED FOR ASSESSMENT PURPOSE ONLY

T.35S. R.14W. W.M. CURRY COUNTY 1" = 2000'



PARCEL 5500  
1. N83°34'10"E 155.29'  
2. N44°11'37"E 130.62'  
3. N00°14'05"W 200.35'  
4. N69°41'09"W 203.65'  
5. N00°04'31"E 342.17'

- CANCELLED NO.  
1700U2  
2100  
2200  
2300 - 2308  
2399  
2400  
2704  
2900 - 2906  
4800  
5000  
5100  
5200  
5200MI  
5300 - 5313  
5800  
5900 - 5908  
6000  
6900  
4101 - 4103  
6700 - 6705  
6800  
7000

SEE MAP 35 13

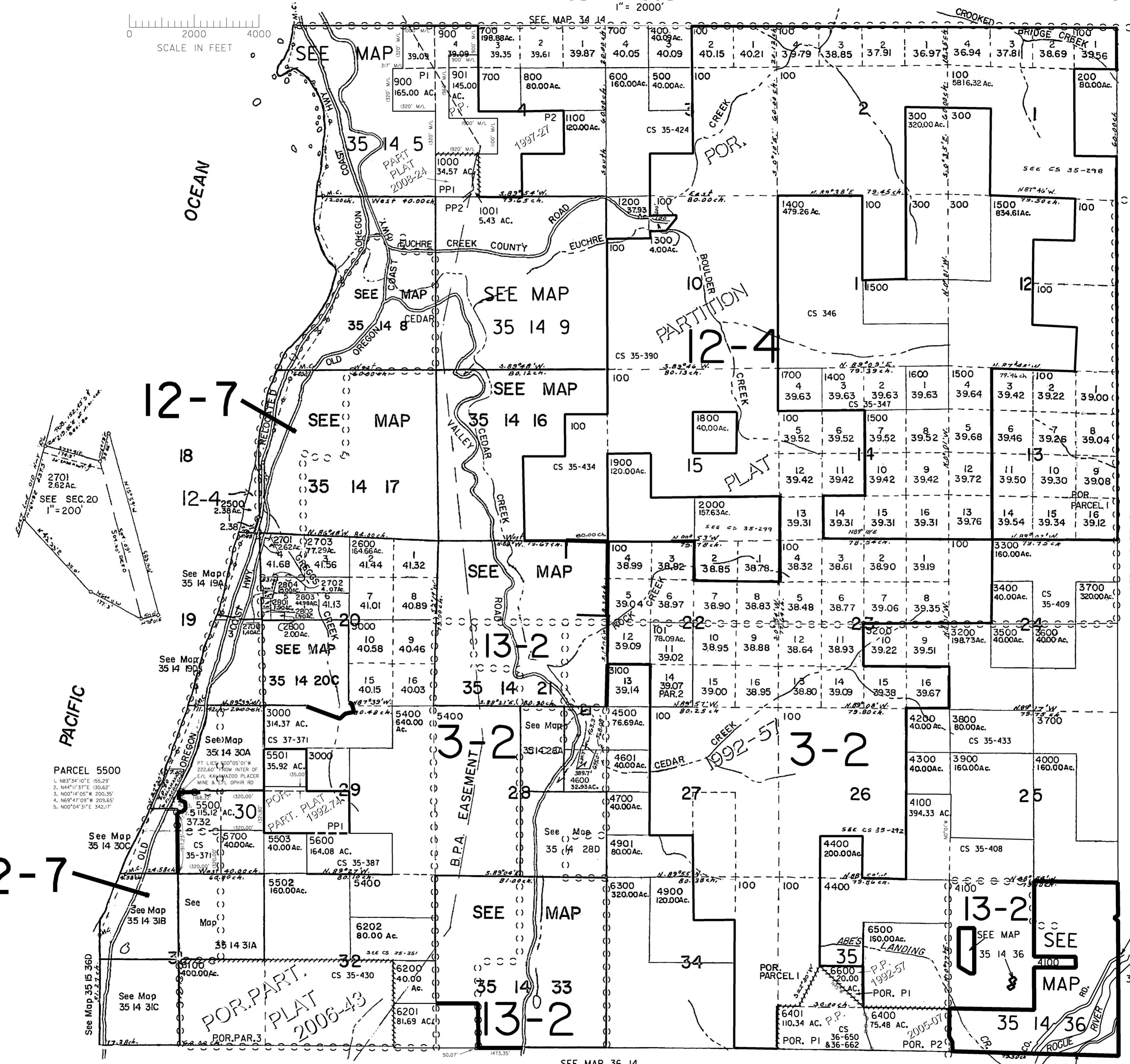
NORTH BANK ROGUE RIVER RD. 545

Revised 12/17/2009, RAA

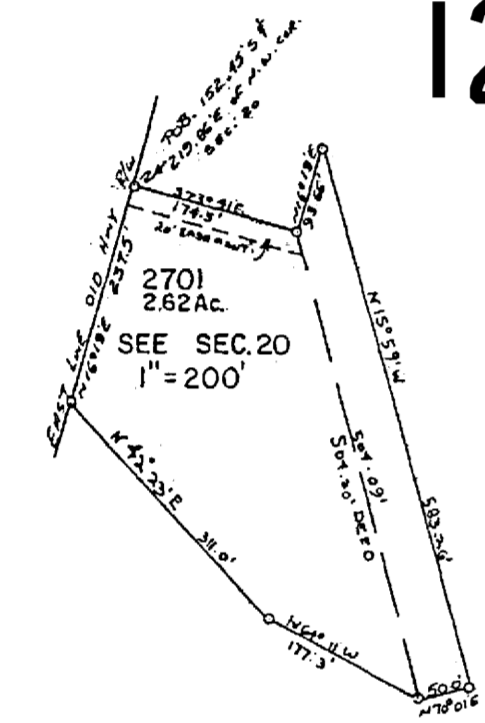
JERRY'S FLAT RD RD. 595

THIS MAP WAS PREPARED FOR  
ASSESSMENT PURPOSE ONLY

T.35S. R.14W. W.M.  
CURRY COUNTY  
1" = 2000'



- CANCELLED NO.
- 1700U2
  - 2100
  - 2200
  - 2300 - 2308
  - 2400
  - 2704
  - 2900 - 2906
  - 4800
  - 5000
  - 5200
  - 5200MI
  - 5300 - 5313
  - 5800
  - 5900 - 5908
  - 6000
  - 6900
  - 4101 - 4103
  - 6700 - 6705
  - 6799
  - 6800
  - 7000



PARCEL 5500

1. N83°34'10"E 155.29'
2. N44°11'37"E 130.62'
3. N00°14'05"W 200.35'
4. N69°41'09"W 203.65'
5. N00°04'31"E 342.17'

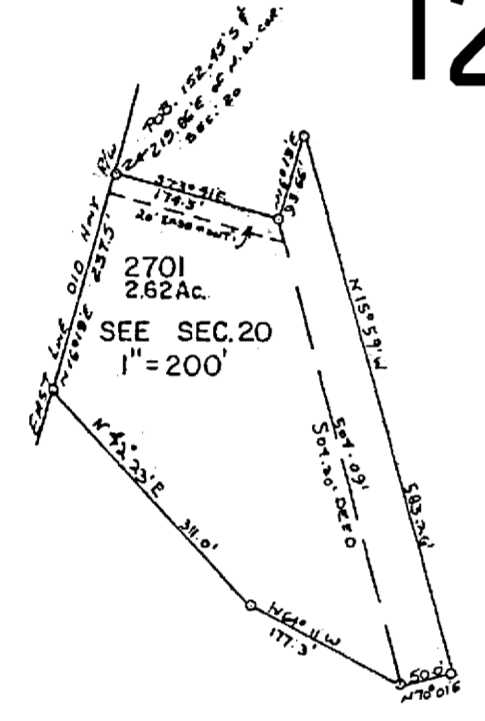
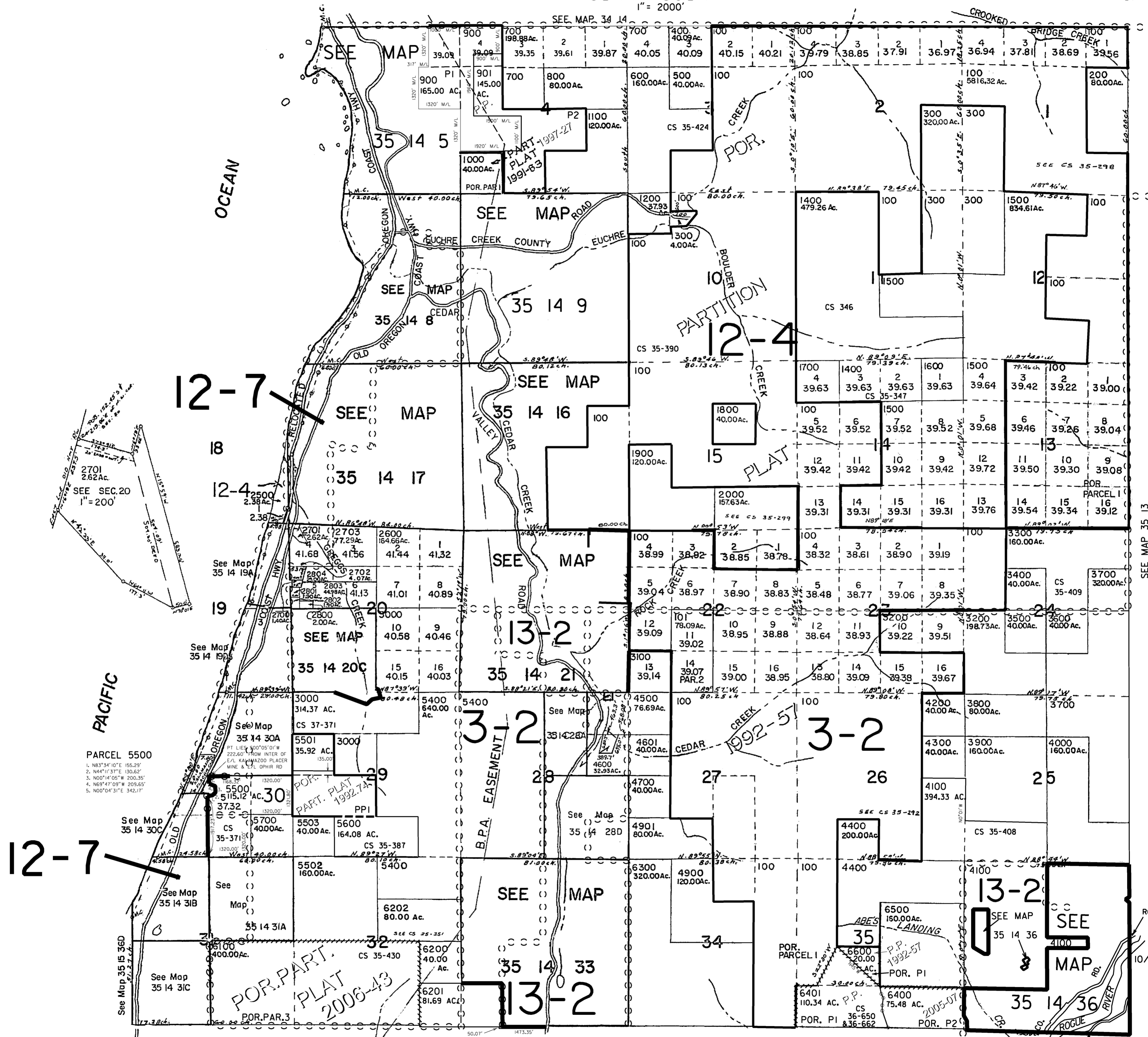
NORTH BANK  
ROGUE RIVER RD.  
RD. 545

Revised  
3/31/2009, RAA

JERRY'S FLAT RD  
RD. 595

THIS MAP WAS PREPARED FOR ASSESSMENT PURPOSE ONLY

T.35S. R.14W. W.M. CURRY COUNTY 1" = 2000'



PARCEL 5500  
1. N83°34'10"E 155.29'  
2. N44°11'37"E 130.62'  
3. N00°14'05"W 200.35'  
4. N69°41'09"W 203.65'  
5. N00°04'31"E 342.17'

- CANCELLED NO. 1700U2, 2100, 2200, 2300 - 2308, 2399, 2400, 2704, 2900 - 2906, 4800, 5000, 5100, 5200, 5200MI, 5300 - 5313, 5800, 5900 - 5908, 6000, 6900, 4101 - 4103, 6700 - 6705, 6799, 6800, 7000

SEE MAP 35 13

NORTH BANK ROGUE RIVER RD. 545

Revised 10/23/2006 RAA

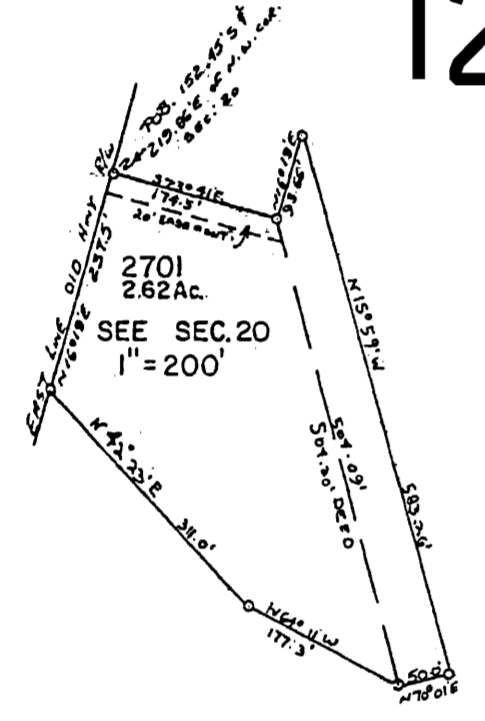
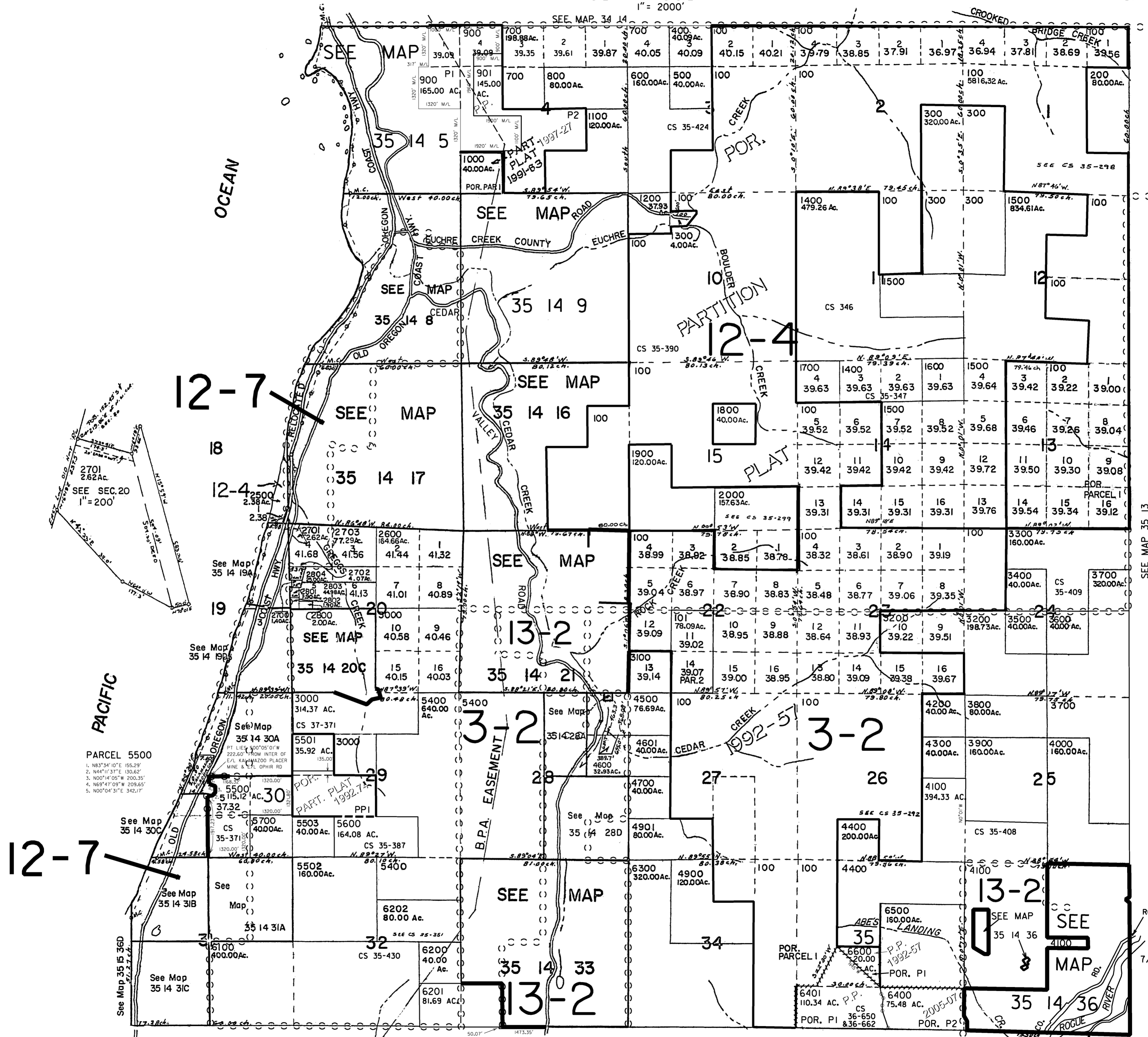
JERRY'S FLAT RD RD. 595



THIS MAP WAS PREPARED FOR ASSESSMENT PURPOSE ONLY

T.35S. R.14W. W.M. CURRY COUNTY 1" = 2000'

35 14 & INDEX



PARCEL 5500 1. N83°34'10"E 155.29' 2. N44°11'37"E 130.62' 3. N00°14'05"W 200.35' 4. N69°41'09"W 209.65' 5. N00°04'31"E 342.17'

- CANCELLED NO. 1700U2 2100 2200 2300 - 2308 2399 2400 2704 2900 - 2906 4800 5000 5100 5200 5200MI 5300 - 5313 5800 5900 - 5908 6000 6900 4101 - 4103 6700 - 6705 6800 7000

SEE MAP 35 13

NORTH BANK ROGUE RIVER RD. RD. 545

Revised 7/19/2006 RAA

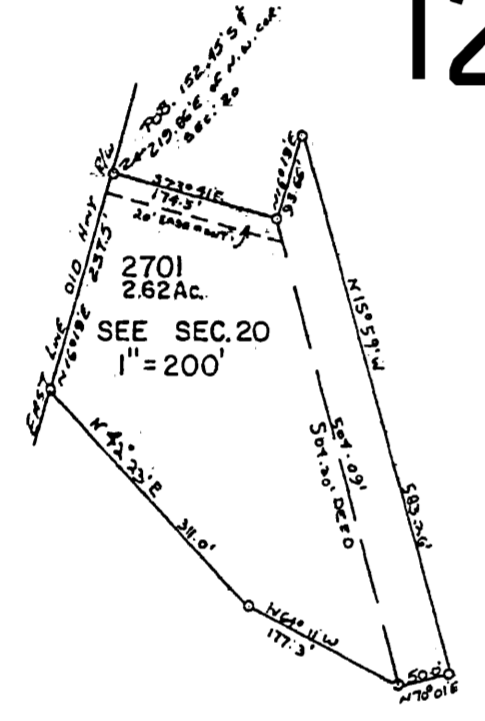
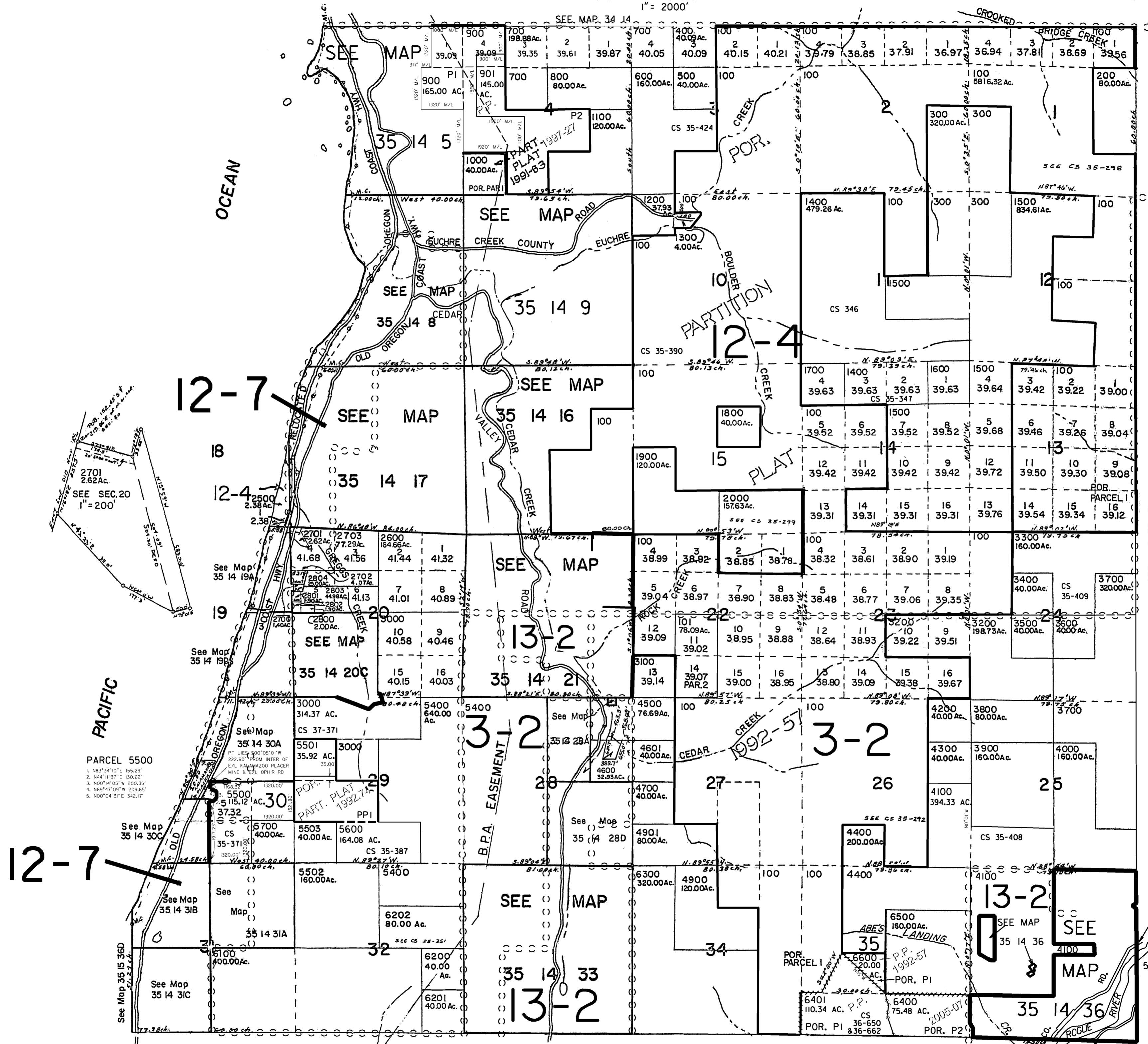
35 14 & INDEX

JERRY'S FLAT RD RD. 595

THIS MAP WAS PREPARED FOR ASSESSMENT PURPOSE ONLY

T.35S. R.14W. W.M. CURRY COUNTY 1" = 2000'

35 14 & INDEX



PARCEL 5500  
1. N83°34'10"E 155.29'  
2. N44°11'37"E 130.62'  
3. N00°14'05"W 200.35'  
4. N69°41'09"W 209.65'  
5. N00°04'31"E 342.17'

- CANCELLED NO.  
1700U2  
2100  
2200  
2300 - 2308  
2399  
2400  
2704  
2900 - 2906  
4800  
5000  
5200  
5200MI  
5300 - 5313  
5800  
5900 - 5908  
6000  
6900  
4101 - 4103  
6700 - 6705  
6799  
6800  
7000

SEE MAP 35 13

NORTH BANK ROGUE RIVER RD. RD. 545

Revised 5/24/2005, DBJ

35 14 & INDEX

JERRY'S FLAT RD RD. 595

SEE MAP 36 14