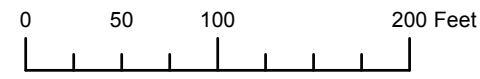


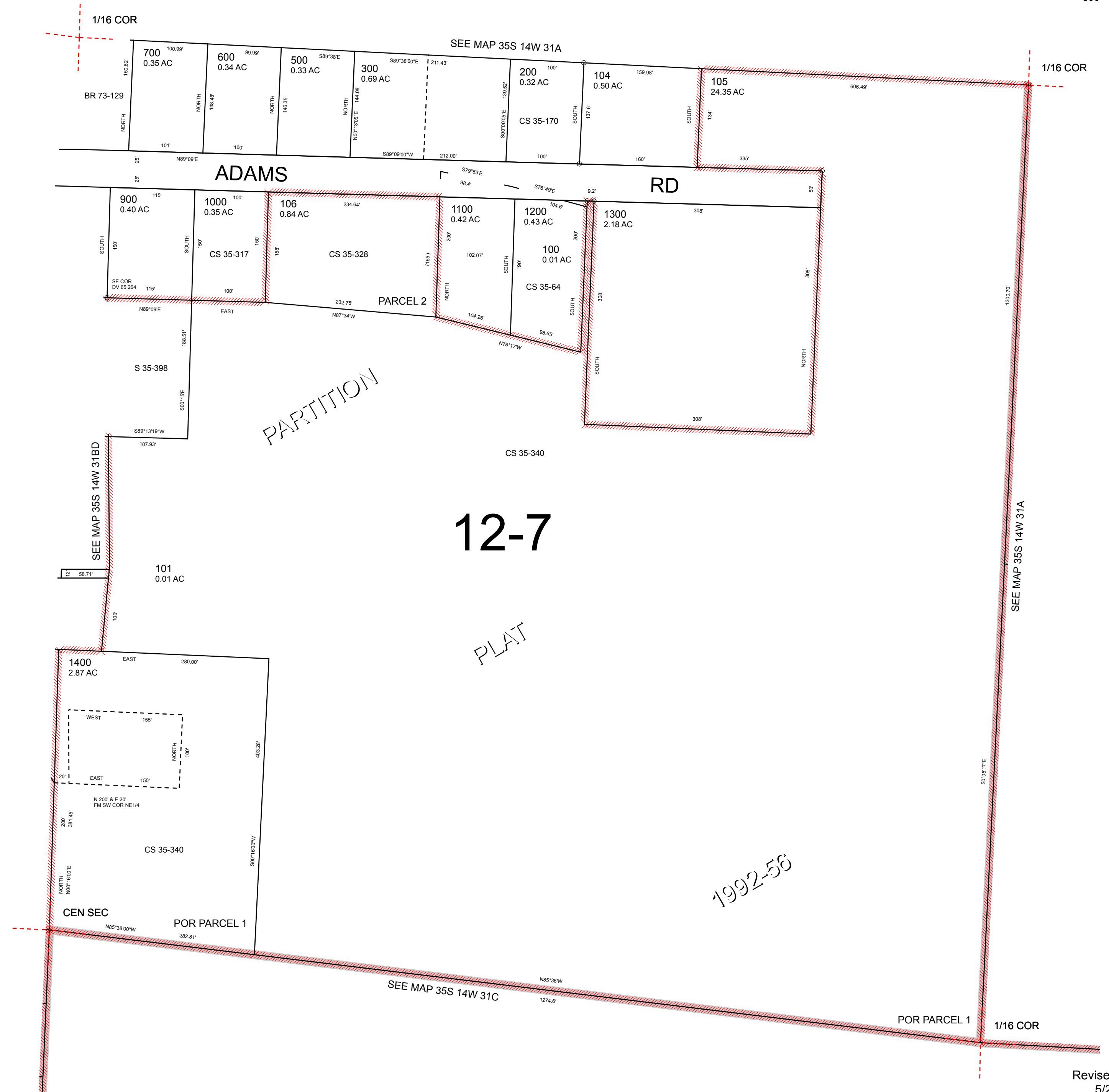
THIS MAP WAS PREPARED FOR ASSESSMENT PURPOSE ONLY



S.W.1/4 N.E.1/4 SEC.31 T.35S. R.14W. W.M.  
CURRY COUNTY  
1" = 100'

35S14W31AC

- CANCELLED:
- 102
- 103
- 107
- 400
- 800



Revised: RAA  
5/26/2011

35S14W31AC

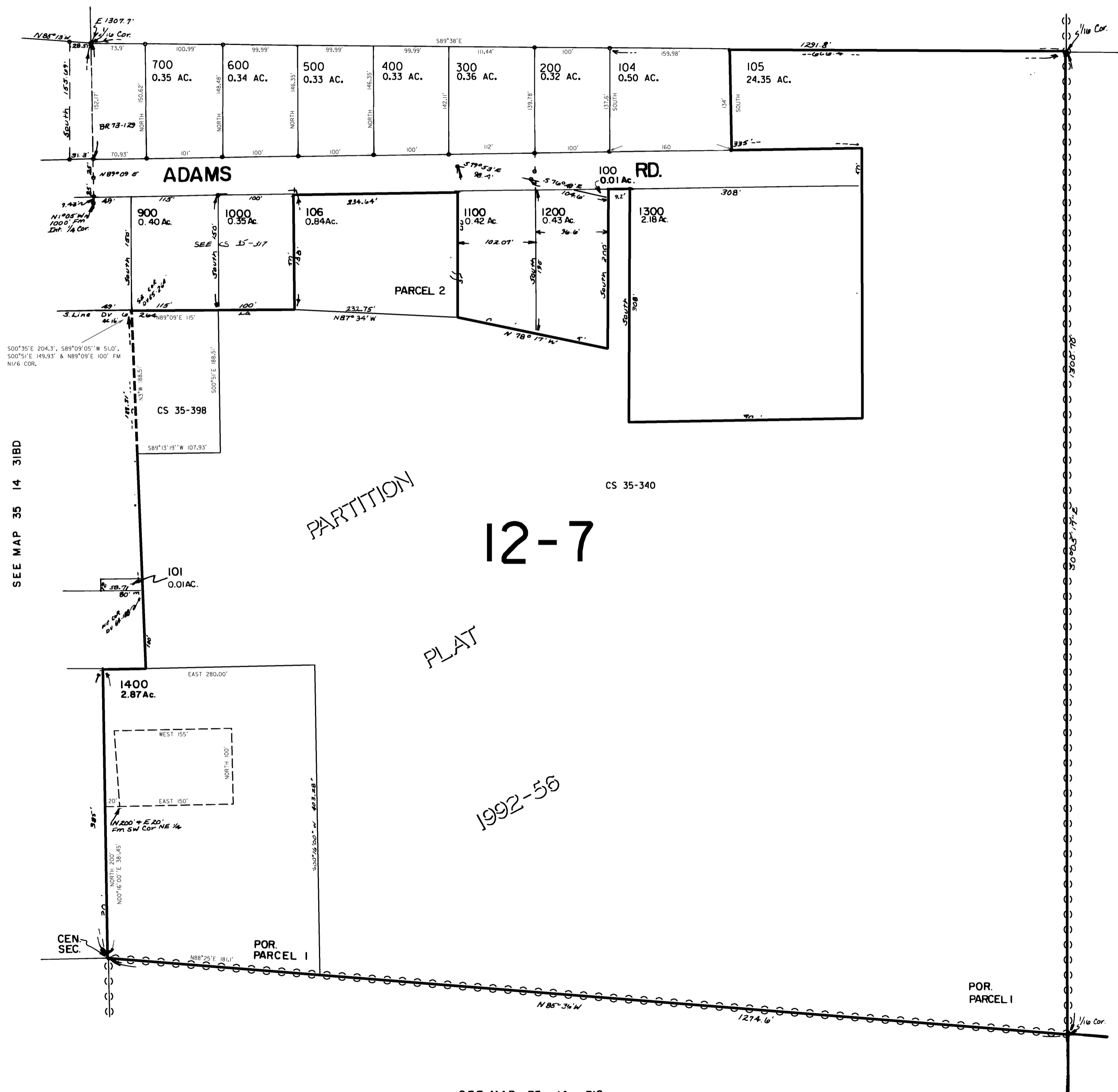
THIS MAP WAS PREPARED FOR  
ASSESSMENT PURPOSE ONLY

SW1/4 NE1/4 SEC. 31 T.35S. R.14W. W.M.  
CURRY COUNTY

35 14 31AC

1" = 100'

SEE MAP 35 14 31A



CANCELLED NO.  
102  
103  
107  
800

SEE MAP 35 14 31BD

SEE MAP 35 14 31A

SEE MAP 35 14 31C

Revised  
5/15/02, GE  
35 14 31AC