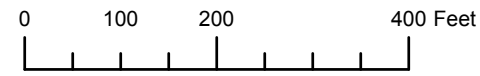


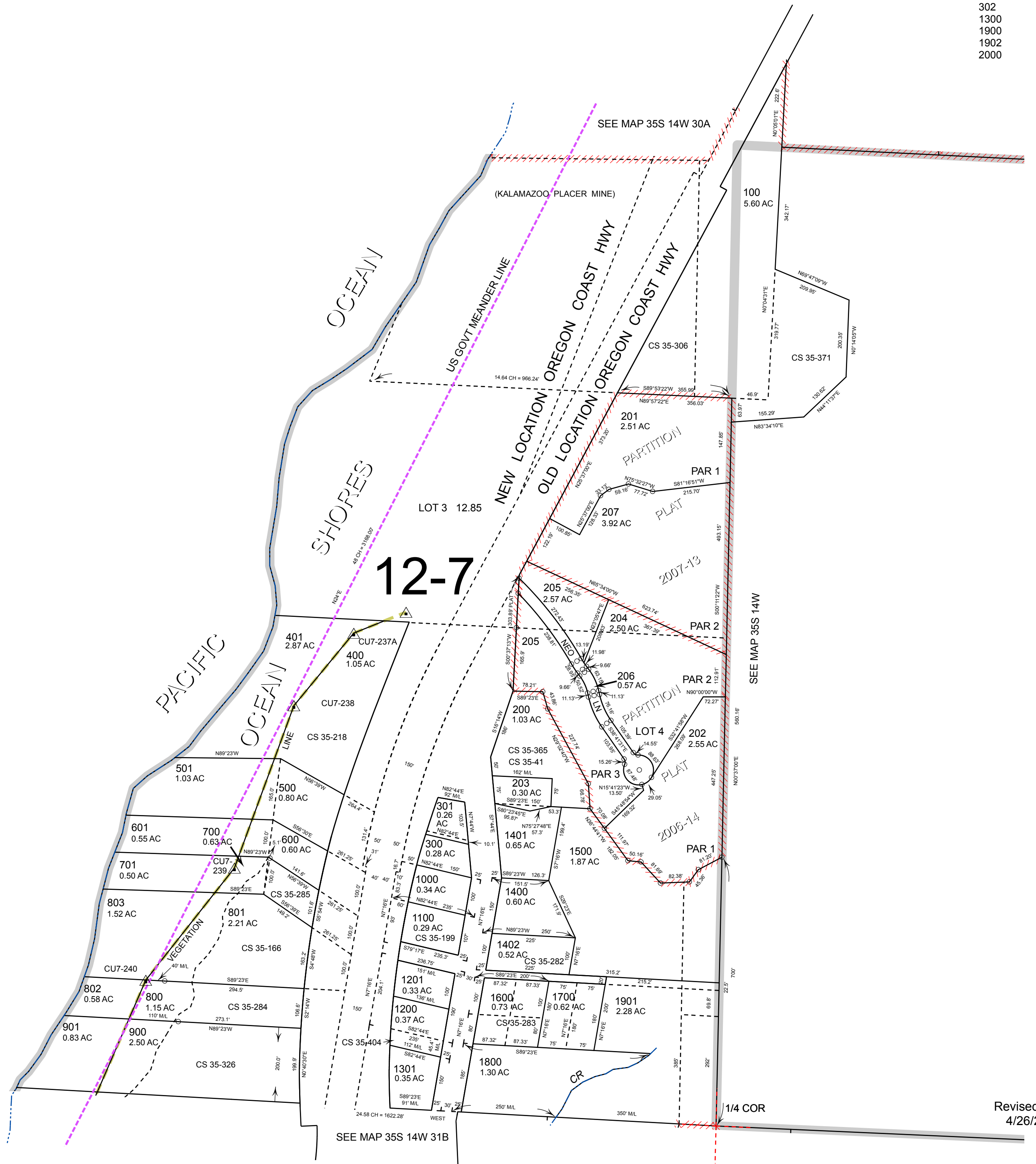
THIS MAP WAS PREPARED FOR ASSESSMENT PURPOSE ONLY



S.W.1/4 SEC.30 T.35S. R.14W. W.M.  
CURRY COUNTY  
1" = 200'

35S14W30C

CANCELLED:  
302  
1300  
1900  
1902  
2000



SEE MAP 35S 14W 31B

SEE MAP 35S 14W 30A

SEE MAP 35S 14W

Revised: TK  
4/26/2012

35S14W30C

THIS MAP WAS PREPARED FOR  
ASSESSMENT PURPOSE ONLY

SW1/4 SEC. 30 T.35S. R.14W. W.M.  
CURRY COUNTY

35 14 30C

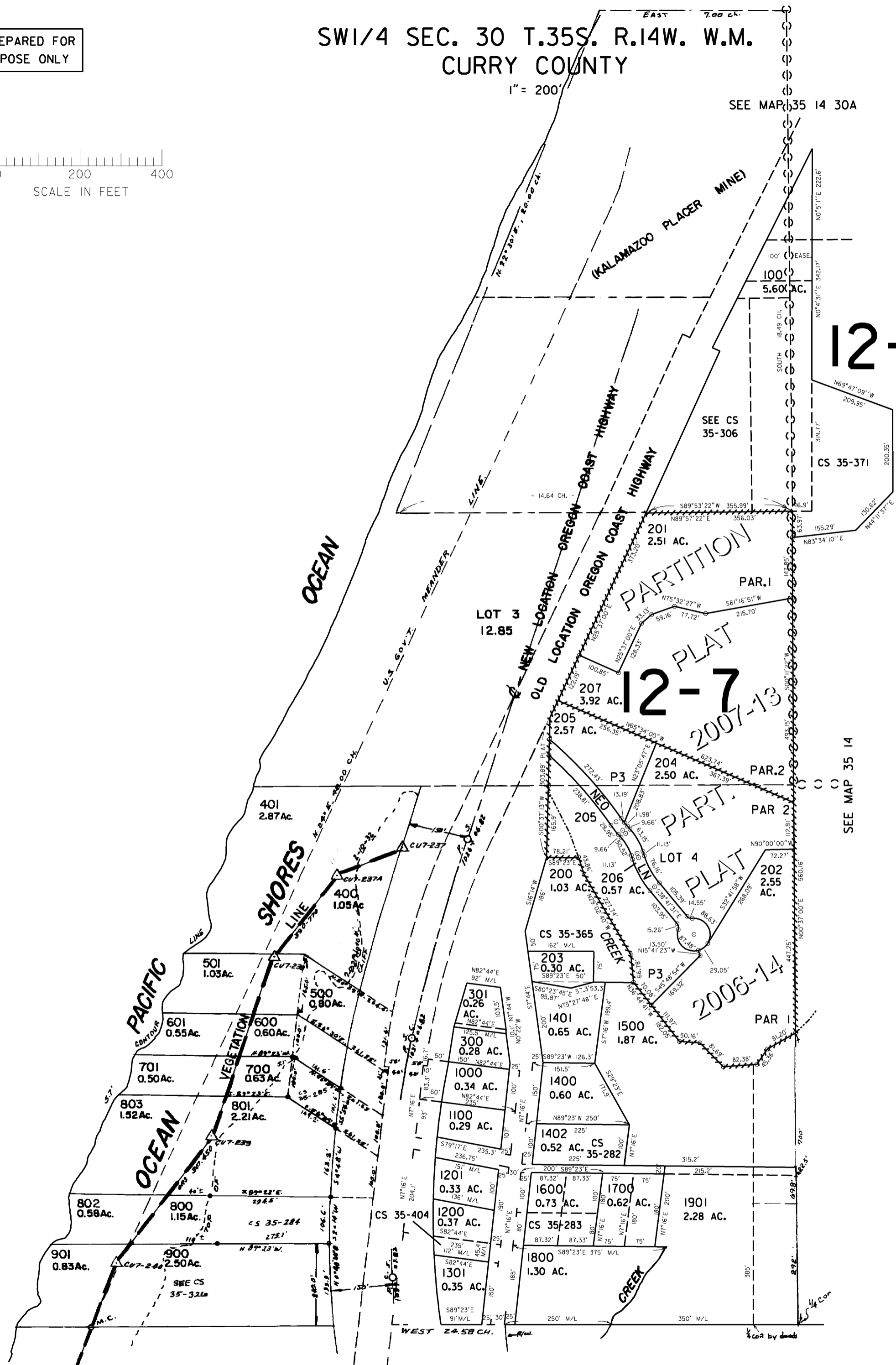
1" = 200'



SEE MAP 35 14 30A

CANCELLED NO.  
302  
1300  
1900  
1902  
2000

12-4



12-7

SEE MAP 35 14

SEE MAP 35 14 31B

Revised  
5/13/2008, RAA  
35 14 30C

THIS MAP WAS PREPARED FOR  
ASSESSMENT PURPOSE ONLY

SW1/4 SEC. 30 T.35S. R.14W. W.M.  
CURRY COUNTY

35 14 30C

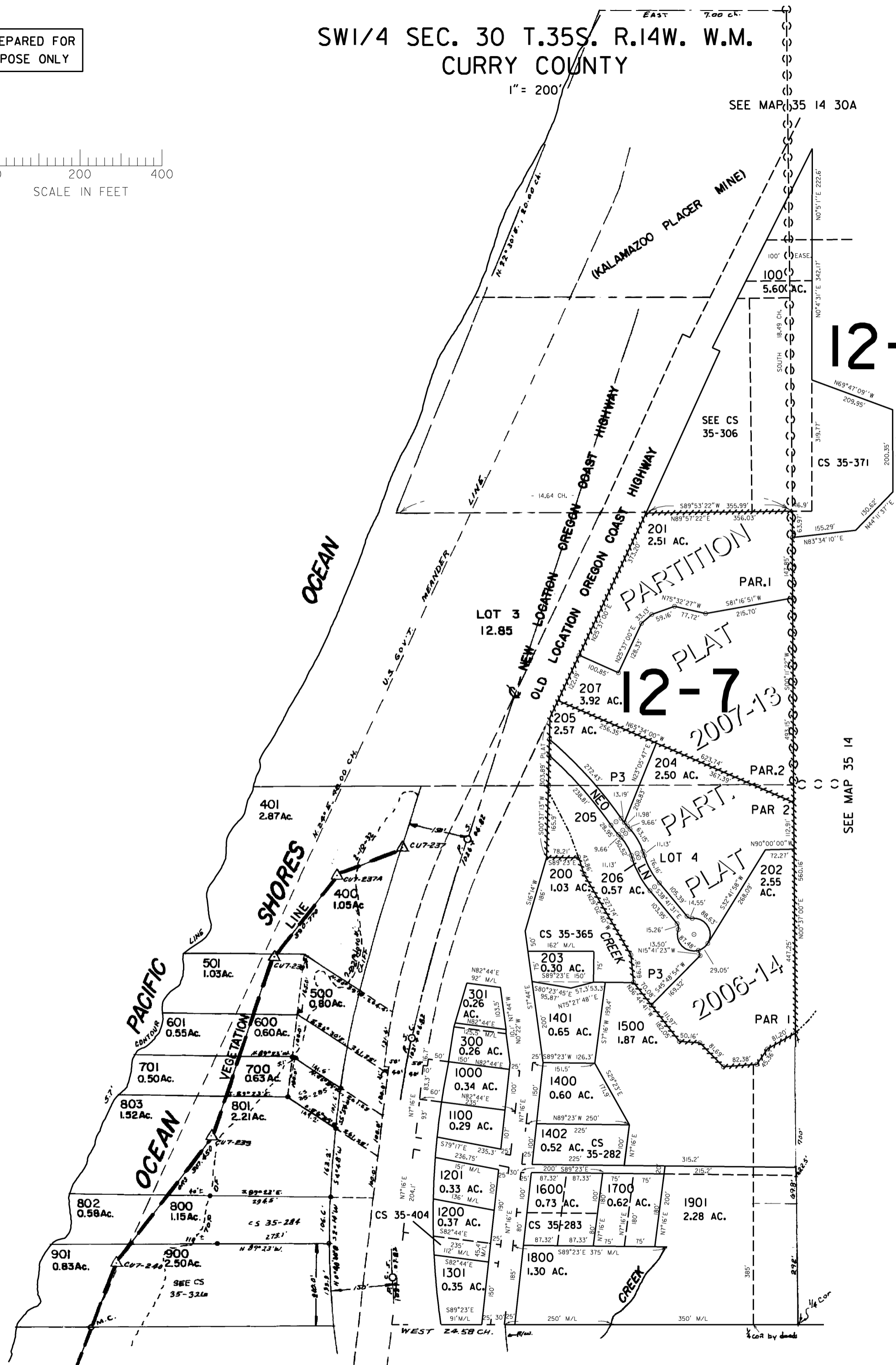
1" = 200'



SEE MAP 35 14 30A

CANCELLED NO.  
302  
1300  
1900  
1902  
2000

12-4



12-7

2007-13

2006-14

SEE MAP 35 14

SEE MAP 35 14 31B

Revised  
5/29/2007, RAA  
35 14 30C

THIS MAP WAS PREPARED FOR  
ASSESSMENT PURPOSE ONLY

SW1/4 SEC. 30 T.35S. R.14W. W.M.  
CURRY COUNTY

35 14 30C



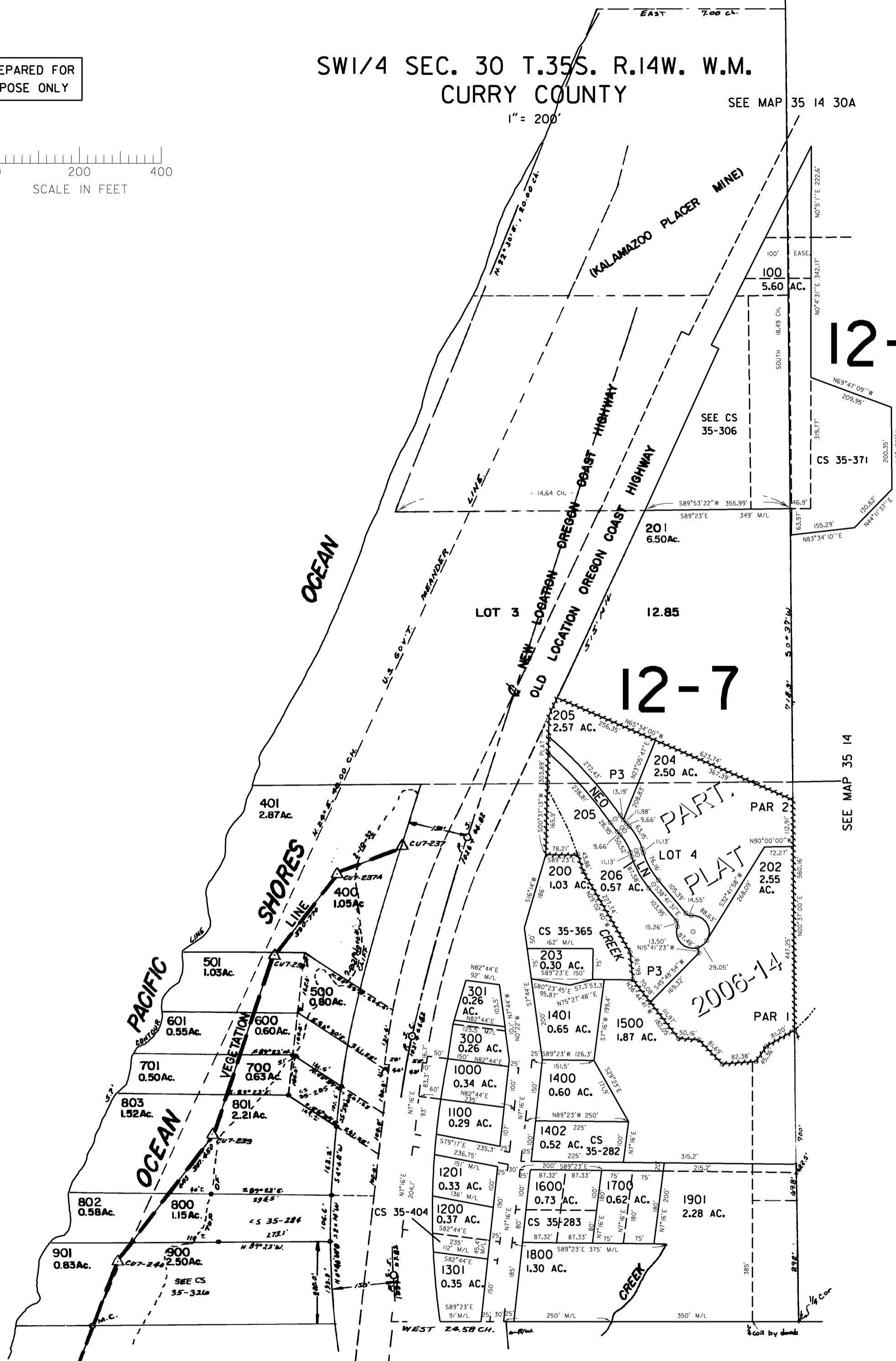
1" = 200'

SEE MAP 35 14 30A

CANCELLED NO.  
302  
1300  
1900  
1902  
2000

12-4

12-7



SEE MAP 35 14

SEE MAP 35 14 31B

Revised  
7/19/2006, RAA

35 14 30C

THIS MAP WAS PREPARED FOR  
ASSESSMENT PURPOSE ONLY

SW1/4 SEC. 30 T.35S. R.14W. W.M.  
CURRY COUNTY

35 14 30C

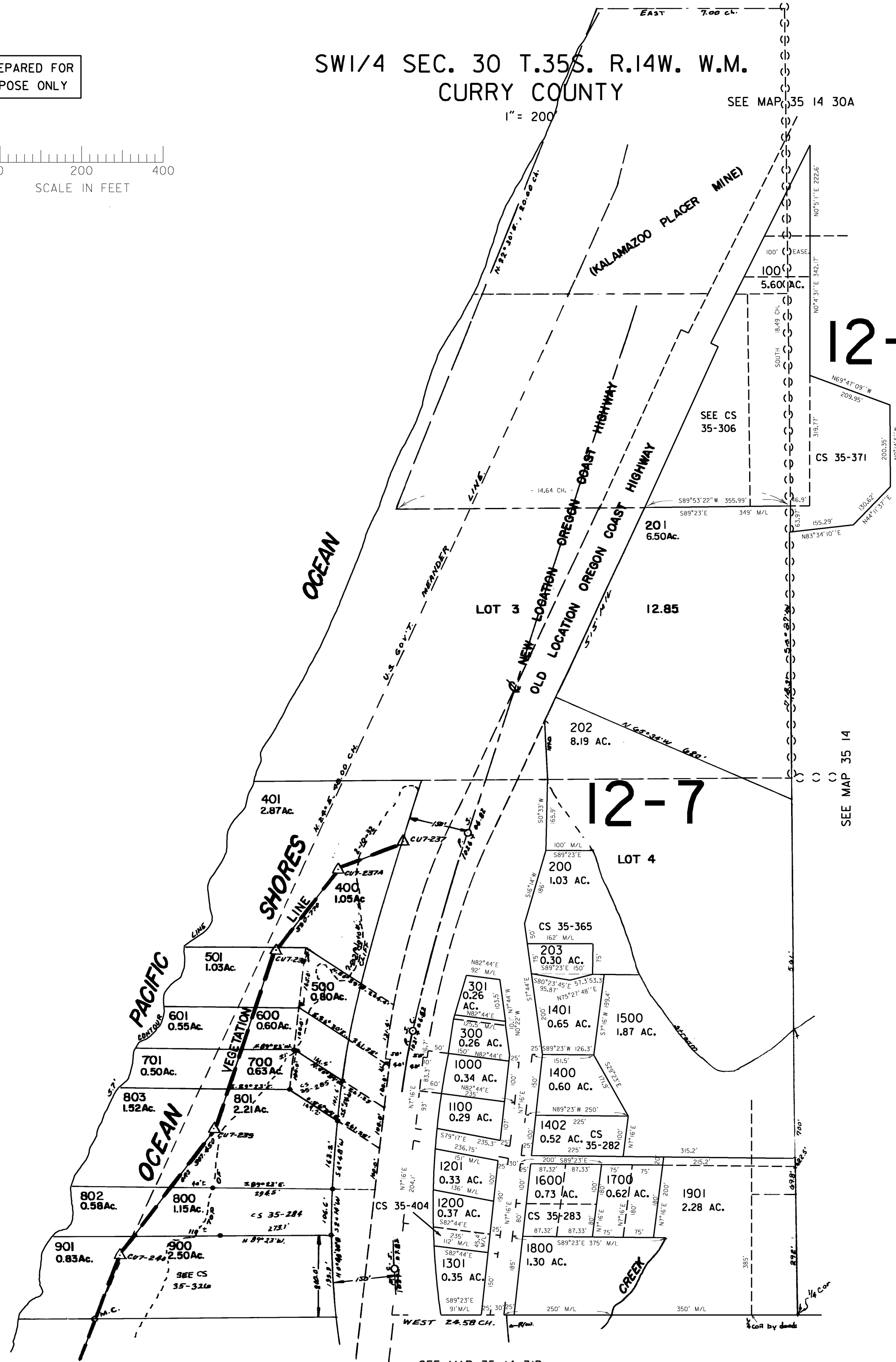


1" = 200'

SEE MAP 35 14 30A

CANCELLED NO.  
302  
1300  
1900  
1902  
2000

12-4



SEE MAP 35 14

SEE MAP 35 14 31B

Revised  
5/15/02, GE

35 14 30C