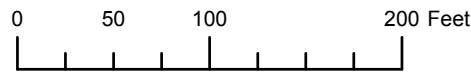


THIS MAP WAS PREPARED FOR ASSESSMENT PURPOSE ONLY

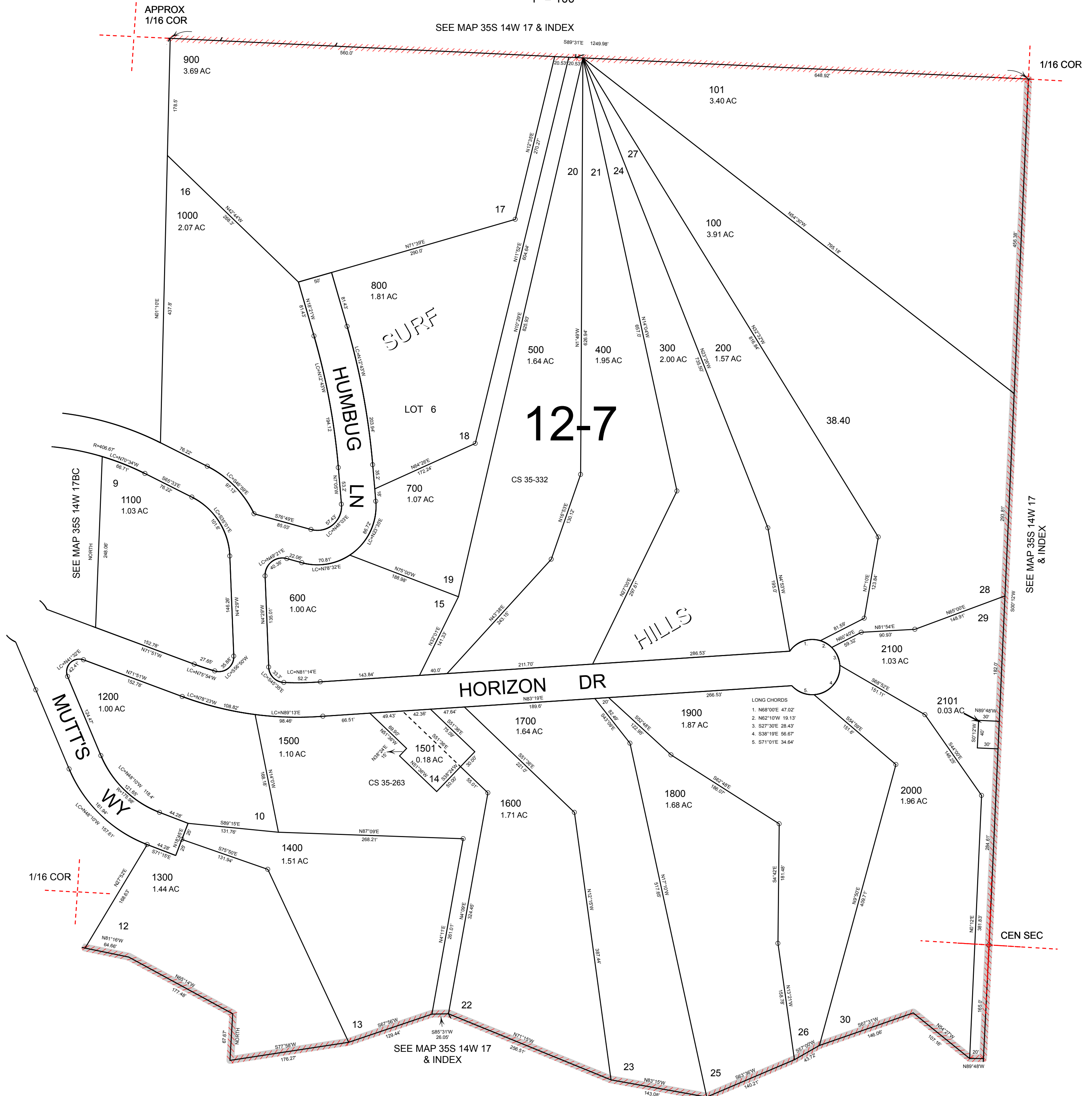


S.E. 1/4 N.W. 1/4 SEC. 17 T.35S. R.14W. W.M. CURRY COUNTY

35S14W17BD

1" = 100'

CANCELLED: 1601



- LONG CHORDS
1. N88°00'E 47.02'
  2. N62°10'W 19.13'
  3. S27°30'E 28.43'
  4. S38°10'E 56.67'
  5. S71°01'E 34.64'

SEE MAP 35S 14W 17 & INDEX

35S14W17BD

Revised: TK 4/27/2012

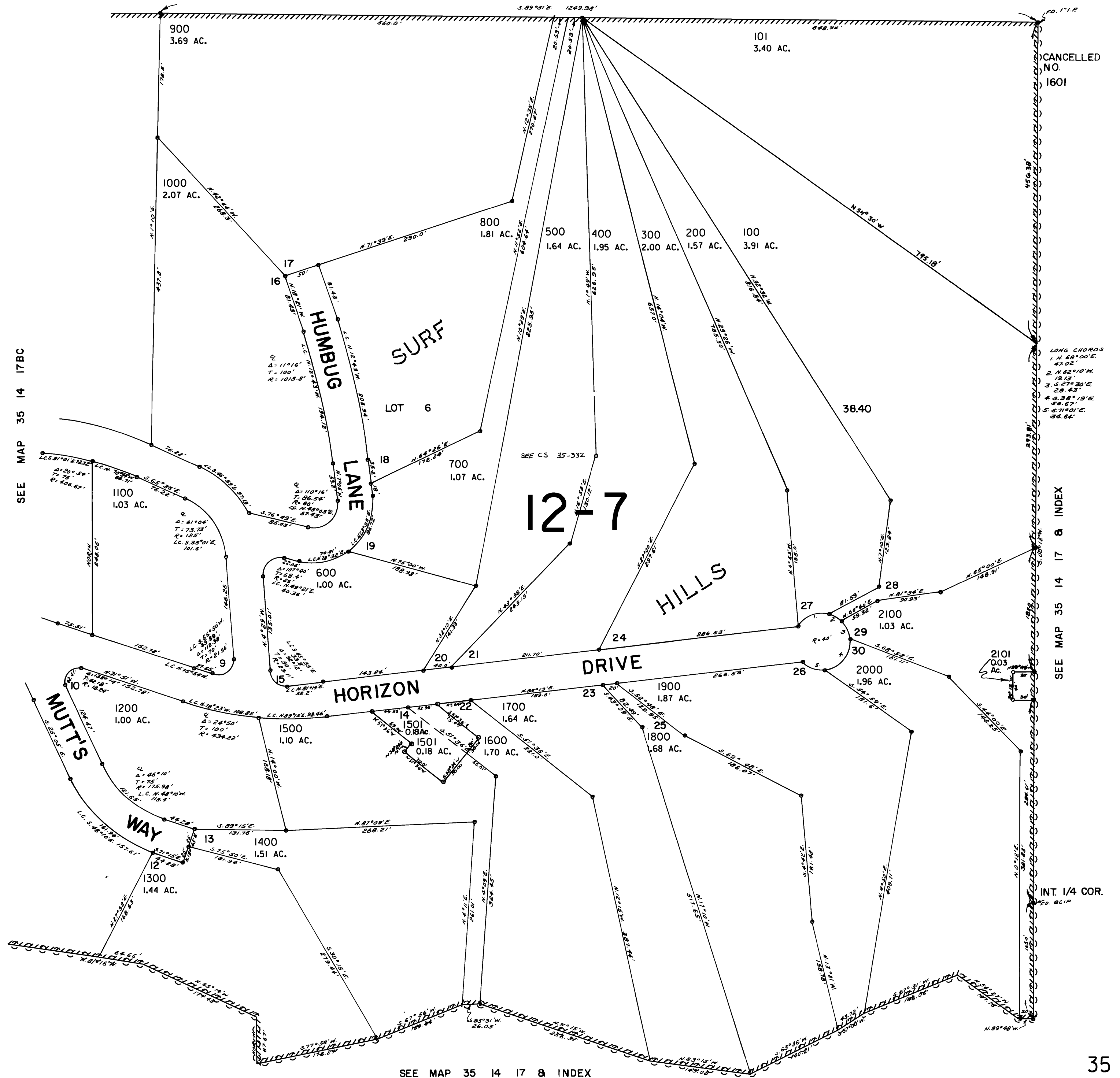
THIS MAP WAS PREPARED FOR  
ASSESSMENT PURPOSE ONLY

SE1/4NW1/4 SEC. 17 T.35S R.14W. W.M.  
CURRY COUNTY

35 14 17BD

1" = 100'

SEE MAP 35 14 17 & INDEX



SEE MAP 35 14 17BC

SEE MAP 35 14 17 & INDEX

SEE MAP 35 14 17 & INDEX

Revised  
5/15/02, GE

35 14 17BD